

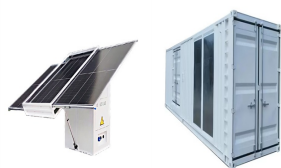
# PHOTOVOLTAIC PANEL SHED COLORED STEEL TILES



AS/NZS 5033 ??? Installation of photovoltaic (PV) arrays. Safe work practices ??? during the installation and ongoing maintenance of PV panels, New Zealand Steel recommends working safely in accordance with relevant safety legislation. Maximising roof performance. PV panels shield COLORSTEEL(R) or ZINCALUME(R) steel from both



Dutch startup Solarix has developed a new line of facade solar panels featuring 13.8% efficiency and output ranging from 110 to 180 W, depending on the module size and color. The panels can be



Our photovoltaic roof tiles are tailored to meet your specific power needs while ensuring durability, protection, and energy efficiency. Designed to blend seamlessly with residential roofs, these tiles offer a perfect combination of ???



Understanding how to set up solar panels for shed is a game-changer for many homeowners. Solar energy not only offers an eco-friendly power source but also transforms sheds into fully functional workspaces, ???



Today, solar energy is becoming as visible as the sun. Flexible, thin-film photovoltaic (PV) products are a vital component of this movement. They incorporate very thin layers of photovoltaic material placed on a glass superstrate or a metal substrate. Thin-film solar cells can consist of several technologies, including cadmium telluride, copper indium gallium ???

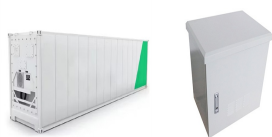
# PHOTOVOLTAIC PANEL SHED COLORED STEEL TILES



There are many different options to suit all different situations for fixing solar panels to buildings. We have built this page for solar panel fixing options to help Developers, Building Contractors, Architects, and Homeowners understand what's on offer when considering fitting panels. is basically when solar panels fix into the roofline



Solar panels installation is increasing among building owners and metal roof are one of the most popular support. Metal roofs provide the right amount of both structural strenght and reflectivity to make the most of your solar ???



Metal Garden Storage; To ensure you have the best solar panel kit for your UK shed, we recommend using an inverter that provides both 20-50% more than the minimum total power you need AND more than twice the amount of power of the most power-hungry piece of equipment. With this in mind, we would recommend a 160W system for this purpose



This new breed of solar panel is incorporated directly into the building envelope. The sleek panels become an exciting new design element, proudly displayed for all to see. We also now have the technology to construct BIPV curtain walls, composed of transparent or semi-transparent photovoltaic glazing, which not only fill interiors with sunlight but harness it for electricity.



Colored Solar Panel Roof Exploring uniqueness in aesthetics, the approach of colored solar panels enables harmonization with the overall design of your shed. Unlike traditional black or blue panels, these colored variants can seamlessly ???

# PHOTOVOLTAIC PANEL SHED COLORED STEEL TILES



With a robust aluminum honeycomb core and a layer of high-efficiency solar cells, each panel is a powerhouse of clean energy. But the magic lies in the customizable facing??? a canvas where any pattern or color comes to life, ???



The advantages of choosing solar louvres for energy active buildings empower future cities to move towards energy consumption efficiency while greatly reducing the carbon footprint and greenhouse emissions of buildings. We manufacture extensive variety of custom BIPV solar panels in size, shape, color, transparency and efficiency. All our



All the profiles used in our solar panel structure systems are made of S350-GD galvanized structural steel (from Zn 450 up to ZnMg 310 gr/m?), corrosion resistant, have a very low weight and have a high strength. Because of this, the structure ???



A 4kW solar panel system is suitable for the average home in the UK and costs around ?5,000 ??? ?6,000. ??? VIEW Funding boost for Oxford solar glass developer Are Solar Panels Worth It? Solar Panel Roof Tiles; Thermodynamic Solar Panels; Pros and Cons of Solar Energy; Solar Water Heating Panels;



Elevated Solar Panel Structures ??? The Optimal Solution NBG Solar Structures provide custom-engineered elevated steel structures, designed to support solar panels used in all types of applications. These solar support structures are an optimal solution for parking garages, solar farms, carports, canopies, charging stations, ground mounts, and roof mounts.

# PHOTOVOLTAIC PANEL SHED COLORED STEEL TILES



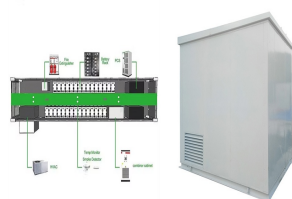
In general, colored panels are more expensive and generate less power. As a result, they're often made by smaller, specialty manufacturers. Currently, if a commercial solar panel manufacturer wants to make solar panel colors other than blue and black, they have to use dyes or coatings, which make the panels less efficient.



Discover Solfit's innovative roof-integrated solar panels designed for both domestic and commercial applications. Our patented interlocking design ensures a watertight seal without the need for plastic trays or complicated flashing systems. With the knowledge of over 20 years solar PV installation experience on UK roofs, our patented



The objective of this study is to calculate the carbon footprint associated with a residential electricity supply system based on photovoltaic roof tiles, and compare with a photovoltaic panel



Color steel tiles, also known as color profiled tiles. It is a color-formed steel plate that is color-coated steel plate and is cold-bent by rolling into various wave shapes. It is suitable for roofing, wall surface and interior and exterior wall decoration of industrial and civil buildings, warehouses, special buildings, large-span steel structures, etc.



Dimensions: 400x400x75mm Module efficiency: 13W Power output: 2.6W Components of the system: Photovoltaic module, LED full-color light strip, metal shell, DMX controller It is suitable for square ground, sidewalk ground, ???

# PHOTOVOLTAIC PANEL SHED COLORED STEEL TILES



Can you put a solar panel on a shed? Given the recent increases in electricity and energy costs many homeowners are now looking for alternative installation areas for grid-connected solar arrays and sheds are ???



Solar PV modules for historical buildings Invisible Solar is a new photovoltaic technology exclusive to Dyaqua, that take on the appearance of building materials. Each Invisible Solar module is more than a photovoltaic panel, it also is an ???



Onyx Solar offers a wide range of color options for photovoltaic glass, from white, polar gray, and blue to earthy tones like sand, terracotta, marble brown, and even corten steel. These are just a few examples of how we can customize the photovoltaic glass to suit any project. If you're looking for a specific color or would like to receive samples, feel free to contact us for more details.

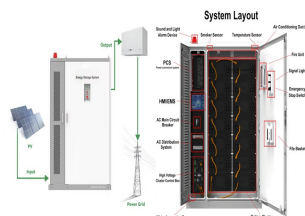


Metrotile are revolutionising the solar roof system, with a brand new, fully integrated solar tile entitled the "Metrotile eQube Solar Tile". Metrotile's incredibly secure and lightweight Qube profile, now complimented with sleek, low-weight photovoltaic technology provides a lightweight, easy to install, cost-effective solar option for your home or business.



That's why authorities often preclude the integration of modern features or traditional photovoltaic modules. There are two main reasons why using traditional photovoltaic panels might be problematic in certain settings: 1. The colour contrast between the panels and the roofs (typically red and orange) creates a visual mismatch; 2.

# PHOTOVOLTAIC PANEL SHED COLORED STEEL TILES



From full black to snow white ??? variety of solar panel color options is where Metsolar stands out.. We are an EU manufacturer of Building Integrated Photovoltaic (BIPV) solar panels for commercial and residential buildings. Our extensive experience in design, development, and manufacturing modules and PV IGU units makes Metsolar the exceptional BIPV provider for ???



What size shed solar panel do I need? Panel size is varied, but how many solar panels for sheds are needed is vital to know, too. For basic needs, like lights and charging smaller devices, a 50W panel setup can be enough. But if you're going bigger ??? by running underfloor heating, perhaps ??? then you're going to want at least three 150W



The more solar panels you install, the more expensive it will be. The make, model, and type of solar panel will also affect the cost. Benefits of solar panels on a shed. There are many benefits to having solar panels on a shed, including: Being able to fully power the shed with solar panels; Supplemental panels for your main solar panel system



A building-integrated photovoltaic (BIPV) facade system designed to harness the power of the sun, stand up to the harshest of climates, and bring unparalleled design flexibility to your building. Its lightweight, large-format design is easier ???



Fastening photovoltaic panels, structures, and supports for the installation of solar systems: our solutions. Sun-Age has been by your side since 2008 for fixing photovoltaic systems and solar energy panels, with the design and production of bent tile, flat tile and sheet metal mounting brackets, PV structures for industrial and agricultural sheds, anchoring systems with cages ???

# PHOTOVOLTAIC PANEL SHED COLORED STEEL TILES

---



An ideal choice for both roof refurbishments and new-build projects, Solar pv roof tiles are provide an uncluttered aesthetic with no visible brackets or racking, as well as easy maintenance and our market-leading 15-year guarantee. Marley ???