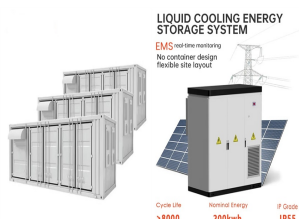
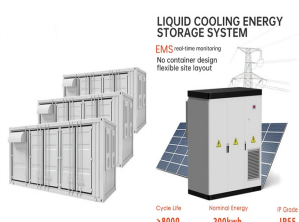


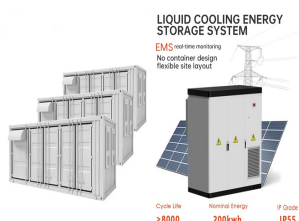
# PHOTOVOLTAIC PANEL SINGLE SLOPE INSTALLATION SPECIFICATIONS



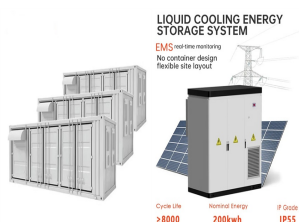
What is the optimal tilt angle of photovoltaic solar panels? The optimal tilt angle of photovoltaic solar panels is that the surface of the solar panel faces the Sun perpendicularly. However, the angle of incidence of solar radiation varies during the day and during different times of the year.



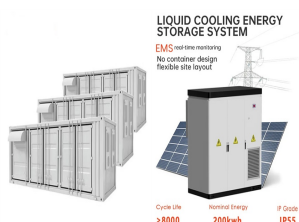
Are rooftop solar PV installations regulated by the RSB? 7.2.5 Rooftop solar PV installations on residential and commercial entities referred to in this guide are typically small-scale and self-supply generation which is an activity regulated by the RSB through licensing or exemption.



What is the size of a solar panel? The size of a solar panel is measured in watts, which indicates the amount of power it can generate. The most common solar panel sizes for residential installations are between 250W and 400W, while larger commercial installations may use panels up to 500W or more.



What size roof do I need to install solar panels? In terms of roof size, you will need a roof of around 20 square metres to install 10 panels on average. But please bear in mind that you will need to consult the assistance of a solar panel installer to get a more accurate idea. Should you install small or large solar panels?

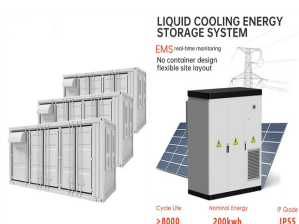


What is a solar panel layout drawing? Here's a rundown of many of the terms you may encounter. Also known as a solar array layout or solar PV layout, a solar panel layout drawing is a key component of a solar plan set. It provides a visual representation of how the panels will be arranged and installed on a specific site.

# PHOTOVOLTAIC PANEL SINGLE SLOPE INSTALLATION SPECIFICATIONS



What are technical solar drawings? Numerous terms are used to describe technical solar drawings, and they often overlap. Here's a rundown of many of the terms you may encounter. Also known as a solar array layout or solar PV layout, a solar panel layout drawing is a key component of a solar plan set.



Solar panel brackets. Solar panel inverter. Solar panel brackets. Installation i.e. labour costs of the installer. Cost of the solar battery storage system (although this is optional). Short answer: the average UK cost of a new ???



Solar Panel Technology Selection. Solar PV modules are made using a number of solar cells and these panels are connected in series or parallel to form a "string" or an "array". A vast majority of rooftop and ground-mounted solar projects use Monocrystalline or Polycrystalline silicon PV modules which are mounted on aluminium frames.



Comparison of Panel Types. When choosing a photovoltaic panel, it is essential to consider the efficiency, cost, and available space for installation. Monocrystalline panels are the most efficient but also the most expensive. ???



Furthermore, the decision on the most appropriate type of the solar panel mounting system will also affect the final cost of the project. The installation of the roof mounting may even imply modifications to your house structure that could increase upfront costs.

# PHOTOVOLTAIC PANEL SINGLE SLOPE INSTALLATION SPECIFICATIONS



The most important solar panel specifications include the short-circuit current, the open-circuit voltage, the output voltage, current, and rated power at 1,000 W/m<sup>2</sup> solar radiation, all measured under STC.. Solar modules must also meet certain mechanical specifications to withstand wind, rain, and other weather conditions. An example of a solar module datasheet composed of ???



panels connected to the PV system and the meter panel. The site plan for ground-mounted PV systems must show as outlined in Information Bulletin 122 How to Prepare a Site Plan and Vicinity Map 4. Roof Plan The roof plan must show the roof slope and location of the existing and proposed PV panels on the roof in relation to any ridge, hip or



An example of completely unacceptable installation work practices that could easily result in death or serious injury. Unsafe work at height like this would normally lead to immediate enforcement action by HSE inspectors ??? Solar panel installation is not short duration work and will need scaffolding or similar equipment.



By using the obtained optimum slope angles of PV panels we . It is implied that the tilt angle is the key parameter in the PV installation rather than the azimuth angle. For the yearly total



Number of pieces: 16 Posts per row: Average of 9 or more Row lengths: Up to 94 Slope tolerances: Max Slope grade is 20% N/S and unlimited E/W Certifications: UL 3703, UL 2703 & IEC 62817 Details: Built tough for increased strength (and in either 1P or 2P formats), Terrasmart's durable mechanics ensure reliable performance. Adaptable to any terrain, ???

# PHOTOVOLTAIC PANEL SINGLE SLOPE INSTALLATION SPECIFICATIONS



Guideline on Rooftop Solar PV Installation in Sri Lanka 11 IEC 62109-3:2020 Safety of power converters for use in photovoltaic power systems - Part 3: Requirements for electronic devices in combination with photovoltaic elements. IEC 61730-1:2016 Photovoltaic (PV) module safety qualification ??? Part 1: Requirements



The preeminent slope angle of solar panels is an important determinant of falling solar radiation on the surface of photovoltaic panels. Characteristics of the position of latitude, the sun, and local geography must be explained and understood to determine the slope angle correctly. This study presents a model built mathematically by using a Microsoft Excel ???



Any implementation of a sustainable photovoltaic solar energy system implies the optimization of the resources to be used. Therefore, it is the basis for the design and assembly of solar installations to optimize renewable energy production.. To achieve optimal conversion of solar energy, it is essential to know the solar path, the profile of the needs, and the ???



In a word, each type of solar panel mounting structures has its unique advantages, drawbacks, and ideal use cases, from large-scale utility installations to individual urban dwellers seeking to generate solar energy.



The structure of a roof that supports solar photovoltaic panels or modules shall be designed to accommodate the full solar photovoltaic panels or modules and ballast dead load, including concentrated loads from support frames in combination with the loads from Section CS507.1.1.1 (IBC 1607.13.5.1) and other applicable loads. Where applicable, snow drift loads created by ???

# PHOTOVOLTAIC PANEL SINGLE SLOPE INSTALLATION SPECIFICATIONS



the panels. Numerous fires started by the PV electrical system have involved combustibles within the roofing assembly and were adversely affected by re-radiation of heat from the rigid PV panels. Some PV racking systems use plastic frames, which can add significant fuel loading to a roof fire. Also, while the top surfaces of the panels are

## Commercial and Industrial ESS

Air Cooling / Liquid Cooling

- Budget-Friendly Solution
- Renewable Energy Integration
- Modular Design for Flexible Expansion



There isn't one single answer to the question "How big are solar panels?" but the size of the solar panels you install for residential or commercial solar systems matters. For one thing, solar panel sizes or dimensions, measured in height by width, will determine exactly how many panels can fit on the roof space you have available.



Rooftop and Small Solar Power Plants Program" for installation of 4,200 MW RTS plants in the country by year 2019-20, out of which 2,100 MW was through Central Financial Assistance (CFA). Specifications of Net Meter as per the sanction load of consumer will be displayed which can be purchased by consumer/Agency from MSEDCL approved vendor.

- Scalable Solution
- Modular Expansion
- Predictable Payback
- Battery Bank Cycles

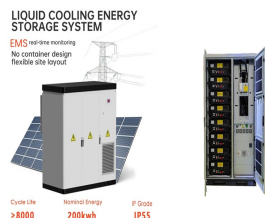


Solar power is already the cheapest source of electricity in many parts of the world today, according to the latest IRENA report. Electricity costs from solar PV systems fell 85% between 2010 and 2020 [20]. Based on a comprehensive analysis of these projects around the world, due to the fact that the cost of photovoltaic power plants (PVPPs) will decrease, their ???



When installing PV systems on pitched roofs, such as those made of color steel tiles or ceramic tiles, the installation method typically follows the natural slope of the roof. In these cases, the spacing between rows of panels can be determined by considering a maintenance corridor that facilitates easy access for maintenance and inspection.

# PHOTOVOLTAIC PANEL SINGLE SLOPE INSTALLATION SPECIFICATIONS



Some common solar panel system sizes include a 3kW solar panel system, a 4 kilowatt solar panel system and a 5kW solar panels. For instance, a typical 2kW solar panel system suited for 1-3 people will need ???



solar PV system meets the current regulations, standards and best practices. 2.1.4 Solar PV systems intended for standalone operations (not connected in parallel with the Low Voltage distribution system are not covered in this document). Furthermore, Mechanical and civil design of the solar PV array are not within the scope of this document.



The site of the hypothesized solar PV system is at 9, Mountain Rise, Berea, Durban, South Africa. This work presents values of tilt and azimuth angles and battery operating temperature that



4. Solar PV Module The EPC Company/ Contractor shall use only the PV modules that are empanelled to the ANERT OEM empanelment. The List of PV modules under various categories (c-Si Mono/c-Si Poly/Mono PERC etc.) are attached as Annexure II-F. However the specifications for the PV Module is detailed below: 1.



The TA is defined as the slope angle of the PV panel to the horizontal plane. Many researchers were implemented in many countries to calculate the OTA. Zamora 4 investigated the TA of the PV panel



# PHOTOVOLTAIC PANEL SINGLE SLOPE INSTALLATION SPECIFICATIONS



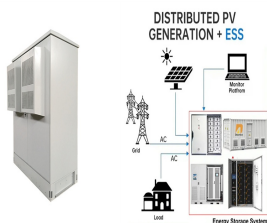
The advantage of Pole-mounted is flexible positioning, enabling solar panel installation in a variety of locations. They also offer easy access for maintenance and the potential for tracking the sun. Anyway, they handle fewer panels per pole, and the installation process may be more complicated and expensive because of the need for a firm and stable pole structure.



The solar panel angle of your solar system is different depending on which part of the world you are. Solar panels give the highest energy output when they are directly facing the sun. The sun moves across the sky and will be low or high depending on the time of the day and the season. For that reason the ideal angle is never fixed.



Reading a solar panel technical datasheet is a fundamental skill for anyone in the solar energy industry or considering a solar panel installation. By understanding the specifications and performance data provided in these datasheets, you can make informed decisions, optimize the performance of your solar energy system, and ensure the best return on your investment.



The most common solar panel sizes for residential installations are between 250W and 400W, while larger commercial installations may use panels up to 500W or more. The size of a solar panel affects its efficiency, ???



Learning Objectives: Review different types of photovoltaic (PV) arrays and the pros and cons of each approach. Describe how roof system design and materials contribute to the long-term success of a PV array installation. Explain PV array layout considerations and how they impact long-term roof system performance. Discuss considerations for commercial rooftop ???

# PHOTOVOLTAIC PANEL SINGLE SLOPE INSTALLATION SPECIFICATIONS

---



That's basically a 66x39 solar panel. But what is the wattage? That is unfortunately not listed at all. 72-cell solar panel size. The dimensions of 72-cell solar panels are as follows: 77 inches long, and 39 inches wide. That's a ???



These technical drawings outline the specifications, dimensions, and installation guidelines for solar panels within the system. PV plan sets, which include solar panel drawings, are critical for ensuring the proper ???