

PHOTOVOLTAIC PANEL SUPPORT INSTALLATION ACCEPTANCE STANDARDS



What is solar PV acceptance? The process of solar PV acceptance ensures that photovoltaic systems are safe for operation, can remain compliant with environmental and planning requirements, meet design and performance objectives, and that any tests meet contractual requirements.



What does acceptance mean for a solar system? Acceptance is a critical part of the solar system development process for any PV system owner. Before the handover to commercial operations can begin, solar systems must pass a set of acceptance and performance tests conducted by the Engineering, Procurement and Construction (EPC) contractor.



Do PV system commissioning standards require performance testing? This best practice guide is PV System Commissioning or re-Commissioning Guide Supplement to characterize and maximize PV system performance. If a PV system is commissioned using industry standards, then it should produce as much energy as was expected, right? No, PV industry commissioning standards do not call for performance testing.



Do photovoltaic modules need a certification test protocol? A certification test protocol that delivers an accurate and credible estimate of component and system performance is needed. Even with current component qualification information, photovoltaic module performance data must be modified to account for actual conditions.



Are there any UK standards relating to a PV installation? While many UK standards apply in general terms, at the time of writing there is still relatively little which specifically relates to a PV installation. However, there are two documents which specifically relate to the installation of these systems that are of particular relevance:

PHOTOVOLTAIC PANEL SUPPORT INSTALLATION ACCEPTANCE STANDARDS



What is a roof mounted photovoltaic system guidance? The guidance refers only to the mechanical installation of roof mounted integrated and stand-off photovoltaic systems; it provides best practice guidance on installation requirements and does not constitute fixing instructions.



photovoltaic (PV) solar power plant projects, PV solar panel (SP) support structure is one of the main elements and limited numerical studies exist on PVSP ground mounting steel frames to be a



The results show that: (1) according to the general requirements of 4 rows and 5 columns fixed photovoltaic support, the typical permanent load of the PV support is 4679.4 N, the wind load being 1



Solar Panel Specifications: The size, weight, and configuration of the solar panels must be compatible with the mounting system to ensure a secure installation. Climatic Conditions: Environmental factors such as wind, snow, and seismic activity must be taken into account to ensure the system can withstand local conditions.



The National Standards Authority of Ireland (NSAI), with the support of the Sustainable Energy Authority of Ireland (SEAI), has developed and published a new National Standard Recommendation for the design and installation of solar PV micro-generators in homes; S.R. 55 Solar photovoltaic micro-generators for dwellings.. This new Standard Recommendation has ???

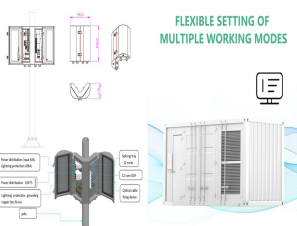
PHOTOVOLTAIC PANEL SUPPORT INSTALLATION ACCEPTANCE STANDARDS



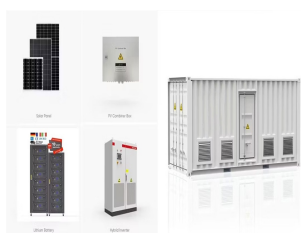
:2016 sets out design requirements for photovoltaic (PV) arrays including DC array wiring, electrical protection devices, switching and earthing provisions. Solar panel - Photovoltaic - PV - Solar power - Rural electrification - LVDC. Multilingual customer service support; Newsletter.



PV SYSTEMS ??? PHOTOVOLTAIC SOLAR SUPPORTS - Due to the location, the field configuration, necessary resistance to snow and wind, the geotechnical study, the model, weight and size of the panels and the favorite electric strings, ground-mounted photovoltaic tables are of several kinds, shapes and configurations. In this regard, we present below the models most ???



The scope includes guidelines and practices for the Supply, Installation, Testing and ommissioning of On- Grid PV power plants (Roof-top/Ground Mounted) All the necessary approvals from KSEL/Electrical Inspectorate, feasibility study, necessary civil work, Mounting of Module Structures, PV Module Installation, Inverter Installation,



All solar panel mounting systems will have a limit of building height ??? typically 10 m, but sometimes 20 m. For example, Australian company SunLock supplies a "one size fits most" set of drawings in its installation manual, but can provide extra certification for any building height, panel size or purlin/batten material or thickness



exposed cable of photovoltaic panel (PV) (refer to Annex A). He was subsequently conveyed to the hospital where he passed away on the same day. 2. As the installation of PV panels (or commonly known as solar panels) gains acceptance and wide adoption by building owners, it is crucial that industry stakeholders

PHOTOVOLTAIC PANEL SUPPORT INSTALLATION ACCEPTANCE STANDARDS



information on the installation requirements for solar PV systems, operations and recommended preventive maintenance works, and various incentives to promote solar PV systems in Singapore. We have also refreshed the presentation of the handbook to make it more accessible and reader-



These transient currents and voltages will appear at the equipment terminals and likely cause insulation and dielectric failures within the solar PV electrical and electronics components such as the PV panels, the inverter, control and communications equipment 2, as well as devices in the building installation 3. The array box, the inverter, and the MPPT ???



Solar panel installation: used to secure panels to mounts. Connecting mount components: for joining various sections when constructing mounting structures. Considerations: Material selection: consider environmental factors such as humidity, salt spray, and temperature changes to select appropriate screw and bolt materials.

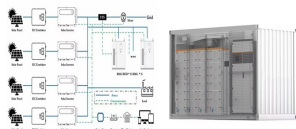


ICC Evaluation Report AC 428, Acceptance Criteria for Modular Framing Systems Used to Support Photovoltaic (PV) Panels (ICC AC 428, 2012) This report requires all elements of rooftop PV panel systems to be designed for component and cladding pressures per ASCE 7-10. (The 2010 edition of ASCE 7 does not have criteria specific to PV systems.)



speci???c ???at plate PV panels that comply with the standard for PV UL1703 or UL 61730???1(describes the fundamental construction requirements for PV modules for safer operation) and UL61730-2

PHOTOVOLTAIC PANEL SUPPORT INSTALLATION ACCEPTANCE STANDARDS



Preparing for a Solar Panel Installation. Updated January 2024: With good preparation, a capable installer and with all the facts in hand, installing a solar panel system can be an enjoyable and very rewarding experience. As with any construction project the success and efficiency of a solar PV panel installation comes down to good planning.



On Thursday, the 19 th of May 2022, the new Solar Installation Standard (AS/NZS 5033:2021) became mandatory after a 6-month transition period. For your average bloke on the tools, interpreting Australian Standards is about as fun as a punch in the head. The new "Installation and safety requirements for photovoltaic (PV) arrays" a.k.a "5033" is more like a ???



Alternatively, the 3m vertical separation can be exempted if a 1-hr fire-rated horizontal projection that extends at least 600mm from the building is installed between the PV installation and the unprotected opening. (d) PV installations located adjacent to exit staircases shall comply with Cl.2.3.3a.(3) or Cl.2.3.3b.(2)(b).



A solar panel feasibility report or study assesses the viability and potential benefits of implementing a solar energy system in a specific location. It analyzes factors such as sunlight exposure, energy consumption patterns, available space ???



The PV panel s shall be provided with performance warranties that guarantee the panels will produce at least 80% of the rated power after 25 years. (6) The PV panels shall be provided withat least 10-year product warranty. (7) The PV panels shall be installed according to the manufacturer's recommendation.

PHOTOVOLTAIC PANEL SUPPORT INSTALLATION ACCEPTANCE STANDARDS



This Code of Practice sets out the requirements for the design, specification, installation, commissioning, operation, and maintenance of grid-connected solar photovoltaic (PV) systems. Key safety considerations in the protection and ???



The structure of a roof that supports solar photovoltaic panels or modules shall be designed to accommodate the full solar photovoltaic panels or modules and ballast dead load, including concentrated loads from support frames in combination with the loads from Section CS507.1.1.1 (IBC 1607.13.5.1) and other applicable loads. Where applicable, snow drift loads created by ???



Standard solar panels: 200W, 250W, 300W, 350W, 500W panels. There are a lot of in-between power ratings like 265W, for example. Big solar panel system: 1kW, 4kW, 5kW, 10kW system. These include several solar panels connected together in a system (2 ??? 50 solar panels). you have to install 95 or so 300W solar panels. Hope this helps. Reply

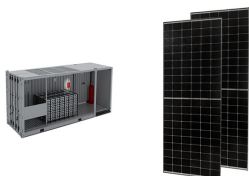


photovoltaic (PV) system and making sure it is compliant with environmental and planning requirements, meets design and performance objectives, and that any tests meet contractual requirements. System owners will usually only sign the acceptance certificate and formally take over the system once it meets all these requirements.



utility-scale installation on 90 acres in Stone Mills, Ontario, Canada. participation in international committees on the establishment of photovoltaic standards, and producing information that will support capacity-building in Canada. Our team's work and research aim to generate knowledge and facilitate its communication to decision makers

PHOTOVOLTAIC PANEL SUPPORT INSTALLATION ACCEPTANCE STANDARDS



systems need to pass a set of acceptance and performance tests conducted by the Engineering, Procurement and Construction (EPC) contractor. This is the process of assuring safe operation of a solar photovoltaic (PV) system and making sure it is compliant with environmental and ???



Support Programme (NESP) II, co-funded by the European Union (EU) and the German Federal Ministry for Economic Standard solar PV components have a relatively long-life span, and as a result, require less servicing and replacements. on average, good quality solar PV panels can last for 20-25 years, batteries for 2-7 years, inverters for



installations, compliance with applicable standards/codes, and can be used to provide a measure of the performance of components or the entire system. This guideline will also help to ensure ???



It is assumed that aluminum framed photovoltaic (PV) panels mounted on a "post" and rail mounting system, the most common in the industry today, will be to install the solar panels. However, homes with a higher than average level of energy such as those meeting ENERGY STAR(R) Homes Standards, may not necessitate an average-sized