

# PHOTOVOLTAIC PANELS FOR FARM HOUSES



Finding an unshaded spot is best, but sometimes shading is unavoidable. Some solar panel systems can minimise the impact of shading using "optimisers". Solar optimisers help improve the overall performance of your solar panel system. So, if one panel is shaded, it doesn't impact how much electricity the other panels can generate.

114KWh ESS



While the rooftop solar panels are the most common choice for homeowners, there are actually quite a few reasons you should take the time to consider a ground-mounted solar panel system instead. Typically speaking, ground-mounted solar panels will cost around the same amount as rooftop solar panels when it comes to the price per watt.



Read on to explore the ins and outs of solar panel usage around the world. The Eco Experts . Solar Panels. Solar Panels. Back. Solar Panels such as a country or a solar farm. By the end of 2023, the global solar capacity was just over 1.5 terawatt Home to roughly 26,600 solar panel installations (MCS, 2024), it is now one of the best



A solar farm is a large array of photovoltaic solar panels which capture energy from the sun to generate electricity. Most animals are safe to graze around the solar panel arrays, however, it's recommended that only certain animals are allowed near the area as larger animals such as cattle or goats can risk injury if they chew through the



Big solar panel system: 1kW, 4kW, 5kW, 10kW system. These include several solar panels connected together in a system (2 ??? 50 solar panels). I see solar farms quoted as "they will produce about a MW" and enough to power ???

# PHOTOVOLTAIC PANELS FOR FARM HOUSES



What is a solar farm? Solar farms are large-scale solar installations typically consisting of thousands of ground-mounted solar panels.. Using photovoltaic (PV) panels, solar farms harness the sun's energy and convert it into electricity that is sent to the electrical grid for distribution and consumption. Sometimes, solar farms use different solar technologies, like concentrated solar ???



Homes and businesses will be able to install rooftop solar panels more easily, under new rules announced today. Changes to permitted development rights rules will mean more homeowners and



A solar farm, also known as a solar power farm, is a large-scale installation of solar panels designed to capture and convert sunlight into electricity. These farms are typically built on open land and connected to the utility grid, supplying power to homes and businesses. Photovoltaic solar farms can be found on various types of land, such as agricultural fields, former industrial ???



Some common solar panel system sizes include a 3kW solar panel system, a 4 kilowatt solar panel system and a 5kW solar panels. For instance, a typical 2kW solar panel system suited for 1-3 people will need anywhere between 5 and 8 solar panels (for 350W panels).



Renewable energy specialists Effective Home provide farm solar panel installation services that save money and reduce carbon footprint by powering farmhouses plus a range of agricultural applications. And solar grants and tax incentives can cut installation costs considerably ???

# PHOTOVOLTAIC PANELS FOR FARM HOUSES



Domestic PV solar panels are an investment that makes sense at all levels, delivering both substantial cost savings on your energy and reducing your carbon footprint. And with Pinergy, you know you'll get the best quality service to make the whole process simple and stress-free.



What Are Solar Panels? Before we begin to explain the overarching process of the solar farm, let us first define the nuances of solar panels, a.k.a. Photovoltaic panels (and the solar cells from which they're made) ??? since they're the most crucial and necessary component in capturing and harnessing the power of the sun.



These plants use photovoltaic (PV) panels to convert sunlight into usable electricity. Solar facilities can be used to generate power for homes, businesses, or the entire adjacent community. Solar farms are becoming more and more common as the cost of solar technology continues to drop.



Solar Energy Systems for Homes, Farms, & Businesses. Empowering homes, farms, and businesses in Ireland with a sustainable future for our valued customers and dedicated employees. The next step is to ensure your home or farm is suitable for solar panels or a solar pv system. We also identify the ideal area of your property to place the panels.



Utility-scale solar farms. A utility-scale solar farm (often referred to as simply a solar power plant) is a large solar farm owned by a utility company that consists of many solar panels and sends electricity to the grid. Depending ???

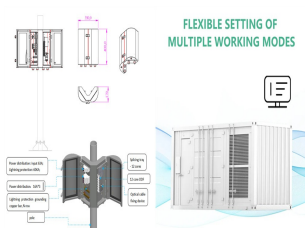
# PHOTOVOLTAIC PANELS FOR FARM HOUSES



Plus, solar farms can actually help to give intensively farmed land an opportunity to recover, while still providing income for the farming business. Agrivoltaics is an innovative approach that enables solar energy generation and agricultural practices. Growing crops underneath solar PV panels has proven to have many benefits.



\*An average solar PV system can save over 50% per year on electricity, based on an average consumption of a house being 4200kWh/units. 8 x Solar PV panels or 3.2kWp will generate approx. 2700 units per year (50% of 4200,kWh/units = 2100kWh/units).



Amazingly, solar farms can now be set up for over 80% less than in 2010. This is largely due to their increasing popularity which has meant that solar panel manufacturers have been able to develop more cost-effective components. The average price of solar panel modules was around ?200,000 per megawatt produced, or 20p per watt, in 2019.



Finally, external influences also make up a portion of solar panel fires. External influences that can cause solar panel fires include moisture and water ingress into parts of the PV system, such as the DC and AC connectors. ???



The government set a legally binding target to reduce the UK's greenhouse gas emissions by 100% by 2050, compared with 1990 levels. This is known as the "net zero target". To meet this target, the government has set the aim of "a fully decarbonised, reliable and low-cost power system by 2035". The government said a fully decarbonised power system would be ???

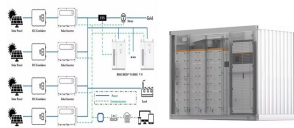
# PHOTOVOLTAIC PANELS FOR FARM HOUSES



Features of the Interactive Map. Comprehensive Coverage: The map showcases various types of renewable energy projects, with a special focus on solar farms.; Geographical Layout: You can easily see the distribution of projects across different regions of the UK, offering insights into regional focuses on renewable energy.; Project Details: Clicking on a ???



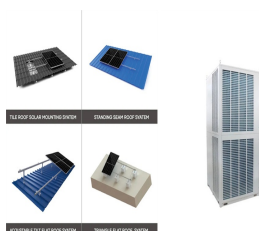
A solar power inverter converts or inverts the direct current (DC) energy produced by a solar panel into Alternate Current (AC.) Most homes use AC rather than DC energy. DC energy is not safe to use in homes. If you run Direct Current (DC) ???



China is home to many sizeable solar farms ??? including the huge 850-megawatt Longyangxia Dam facility on the Tibetan Plateau, with its four million panels. And the largest solar plant in the



A 4kW agricultural solar farm project will cost in the region of ?4,000 where as a 50kW solar photovoltaic panel installation can cost about ?30,000 in the UK both including installation and VAT. A 200kW agricultural solar panel system ???



Solar farms are renewable power stations with large arrays of photovoltaic (PV) solar panels. Compared to domestic solar arrays installed on a home rooftop, solar farm panels are usually ground-mounted. They feed ???

# PHOTOVOLTAIC PANELS FOR FARM HOUSES



If you're expanding your horizons as a landowner, you may wonder whether your property meets typical solar farm land requirements. As the average income for a project sits between \$800 ??? \$1200 per annum per acre, solar projects are becoming seriously popular. You may think decent acreage and excellent sunlight levels would be enough. However, finding ???