

PHOTOVOLTAIC PANELS HORIZONTALLY PLACED WIRING METHOD



How do you wire a solar system? To do this wiring, make two sets of PV panels and connect them in series. Then, connect the two sets of series-connected solar panels in parallel to the charge connector. This solar system wiring diagram depicts an off-grid scenario where the solar panels are series wired.



How to wire solar panels together? Wiring solar panels together can be done with pre-installed wires at the modules, but extending the wiring to the inverter or service panel requires selecting the right wire. For rooftop PV installations, you can use the PV wire, known in Europe as TUV PV Wire or EN 50618 solar cable standard.



How to wire solar panels in parallel or series? Connect the negative terminal of the first panel and the positive terminal of the second panel and connect to the corresponding terminals in solar regulator's input. The solar regulator will detect the panels and start to charge the battery during sunlight. Wiring solar panels in parallel or series doesn't have to be an either/or proposition.



What is a solar panel wiring diagram? At the heart of every solar energy system lies the solar panel wiring diagram, a blueprint that maps out the connections between various components such as solar panels, inverters, charge controllers, batteries, and electrical wiring.



What is a solar panel wire management plan? A proper solar panel wire management plan is therefore crucial. When it comes to solar panel wiring, there are two important techniques: Daisy-Chain and Leapfrog - also known as skip-wiring. In this technique, the installer wires panels continuously together, one after another, and then attaches a return wire to each end of the row.

PHOTOVOLTAIC PANELS HORIZONTALLY PLACED WIRING METHOD



What are the different types of solar panel wiring? Learning the basics of solar panel wiring is one of the most important tools in your repertoire of skills for safety and practical reasons, after all, residential PV installations feature voltages of up to 600V. There are three wiring types for PV modules: series, parallel, and series-parallel.



The mounting system will vary depending on the type of roof, such as flat, pitched, or shingle roofs. Common mounting methods include roof attachments, roof hooks, or solar panel racking systems. The mounting ???



The grounding wire should be at least as thick as the wire used in the solar panel array. A 10-gauge wire is typically adequate for most systems. What size fuse or circuit breaker should I use? The fuse or circuit breaker should be sized according to the maximum current rating of the wire being used.

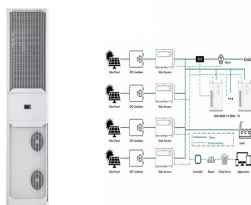


A defective PV module may generate power even if it is removed from the system. It may be dangerous to handle the PV module while exposed to sunlight. Place a defective PV module in a carton after PV cells are completely shaded.

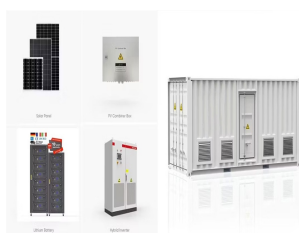


Step 9: Wiring and Setting Wiring sequence: Connect the lamp head to the controller. Connect the battery to the controller. Connect the solar panel to the controller. If the lamp head lights up when connected to the battery, and goes out when the solar panel is connected, it means that the wiring is correct and all components are functioning

PHOTOVOLTAIC PANELS HORIZONTALLY PLACED WIRING METHOD



1 Introduction. The rising need for eco-friendly and renewable energy solutions has amplified the focus on photovoltaic (PV) systems. Bifacial PV (BiPV) panels, among these technologies, have garnered considerable interest due to their capability to capture sunlight from both surfaces, enhance energy output, and lower the average cost of electricity [].



Installing the Electric Wiring: After the solar panels are in place, On top of the mounting hardware, rails (or "racks"), are long, aluminum tracks installed horizontally to bear the weight of the panels and prevent them from sliding off of the roof. High-quality solar panel mounting hardware should be durable, resistant to



Considering the high upfront costs of solar, ensuring maximum solar panel performance by getting the angle right is critical for the fastest return on investment. The ideal tilt angle differs based on latitude and local conditions, which is why careful calculation is needed to optimize solar panel angles for each specific site.



Join the negative cable from the second solar panel to the positive wire from the first solar panel. Connect the solar panels to the solar charge controller. How are solar cells parallel wired? Two identical solar ???



When it comes to solar panel wiring, there are two important techniques: Daisy-Chain and Leapfrog - also known as skip-wiring. Daisy-Chain Technique. In this technique, the installer wires panels continuously together, ???

PHOTOVOLTAIC PANELS HORIZONTALLY PLACED WIRING METHOD



Solar panel wiring (also known as stringing), and how to wire solar panels together, is a fundamental topic for any solar installer. It's important to understand how different stringing configurations impact the voltage, current, and power of a solar array so you can select an appropriate inverter for the array and make sure that the system will function effectively.



3 PV PANEL SOILING REMOVAL METHODS 3.1 Natural environment soiling removal. Soiling removal from PV panels by rainfall and wind is the most common soiling removal method, among which the removal of soiling particles by rainfall is usually considered to be effective . However, this soiling removal method requires a certain intensity of rainfall.



Create detailed documentation of your solar panel wiring diagrams, including equipment specifications, wiring diagrams, and installation instructions. Ensure that your design complies with local building codes, electrical regulations, and ???



The present paper proposes a measure for improving the wind-resistant performance of photovoltaic systems and mechanically attached single-ply membrane roofing systems installed on flat roofs by combining them together. Mechanically attached single-ply membrane roofing systems are often used in Japan. These roofing systems are often ???



See also: Solar Panel Wire Size (Cable Gauge + Calculations Chart) How to install solar panel brackets . Solar panel brackets are just a nut and bolt attachment. They come in a variety of styles, and each is slightly different. Many slide onto the solar frame railings and then tighten to hold the panel in place.

PHOTOVOLTAIC PANELS HORIZONTALLY PLACED WIRING METHOD



Functions. The items serve the functions described below. The information clarifies what each part or component does. A capacitor helps reduce the interruptions while the solar panel operates to provide a continuous electrical supply.; A charge controller prevents the battery from overcharging.; A diode ensures the current flows unidirectionally, i.e., only from ???



PV Module Monocrystalline Bi-Facial Module Installation Guide . Junction Box Style and Wiring Method for the location of the junction box. The specific version is subject to covered by a hard-board or UV-proof materials or when the angle of the modules facing the sun is placed on smooth and flat surfaces.



Solar Panels perform at optimum capacity when placed in direct sunlight. When you install your Solar Power system, try to position your photovoltaic panels directly under the noontime sun for maximum efficiency from your photovoltaic unit.. Before Installation, take care of any obstructions to sunlight. Remove all unnecessary obstructions and items such as ???



Series Wiring: This wiring method is often used when you want to increase the voltage output of your solar array. By adding the voltage outputs of each panel, you can increase the total voltage of the system. Installation and Wiring: When installing a solar panel system, the inverter is typically installed near the electrical panel or

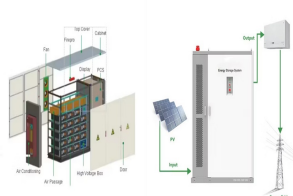


Even though there are some DIY solar panel options, installing them is a highly complex project, and you'll still need assistance from an experienced professional. Before the panels can go on, their electrical conduit and wiring must be in place. A licensed electrician is often the one doing this work. First, Warda runs conduit from the

PHOTOVOLTAIC PANELS HORIZONTALLY PLACED WIRING METHOD



Connecting panels in parallel requires heavier wire to handle the higher current (25 amps vs 5 amps in the examples above) and you need more wire to make all the connections to the different panels. It's more difficult and costly to run these large wires to connect your solar panels to a distant inverter (like is typically found in residential situations).



Solar panel orientation while packing may seem like a minor detail, but it can have significant impacts. Packing solar panels can be done either vertically or horizontally, with each method having its pros and cons. The choice depends ???



An appropriate mounting scheme is crucial for photovoltaic modules' effective installation and optimal function. Factors to consider when choosing a mounting option include the type of roof, such as slope roofs, wind and snow loads, local building codes, and the orientation and tilt angle of the solar panels. The installation process also significantly determines which mounting ???

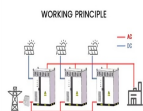


Why Solar Panel Wiring Methods Matter . Choosing between a series, parallel, or combined wiring method doesn't have to be as complicated as it may seem from an outside perspective. You can also check out our Intro to Solar Mini Series, which covers all of the basics and is a great place to start if you're just getting into solar. ????



Wiring solar panels may sound intimidating, but you can configure the panels once you understand the basics of different stringing methods. You'll see how it affects the voltage and current, and pair them with ???

PHOTOVOLTAIC PANELS HORIZONTALLY PLACED WIRING METHOD



One crucial aspect of installing a solar panel system is understanding how to wire a solar panel properly. In this practical guide, we will walk you through the process of how to hook up solar panels to houses, from ???



Learn how to properly connect photovoltaic panels, exploring the pros and cons of series, parallel, and series-parallel configurations. Ensure optimal performance and safety in your PV ???



Series wiring increases the sum output voltage of a solar panel array but keeps amperage the same; Parallel wiring increases the sum output amperage of a solar panel array while keeping the voltage the same. The choice you make can have a significant impact on your system's overall performance.

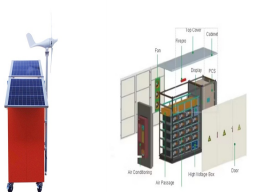


Solar Module Cell: The solar cell is a two-terminal device. One is positive (anode) and the other is negative (cathode). A solar cell arrangement is known as solar module or solar panel where solar panel arrangement is known as photovoltaic array. It is important to note that with the increase in series and parallel connection of modules the power of the modules also gets added.



Solar photovoltaic (PV) panels can be wired to increase voltage and/or current. Caution: Dangerous voltages can be produced when panels are connected together. Some smaller panels are fitted with an output junction box with positive and negative terminals to facilitate wiring, however, the majority of panels come with a plug and socket connection.

PHOTOVOLTAIC PANELS HORIZONTALLY PLACED WIRING METHOD



Solar panel wiring and how to string solar panels together are fundamental topics for any solar installer. The installer might have the extra work of managing cables to secure them in place. Excess wiring is also noticeable when systems are configured with a portrait orientation. (less voltage drop) and wiring requirement. The method



2. Attach the Fixing Bracket to the Solar Panel. Once you've gathered all the tools and followed up on permits and safety requirements, it's time to set up your mounting system. The first step is to attach the fixing bracket to the solar panel. Lay the solar panel face-down on the tarp or canvas to protect the photovoltaic surface.