

PHOTOVOLTAIC PANELS INSTALLED ON RURAL ROOFS FOR PERSONAL USE



"Most property owners in Singapore choose to maximise their roof space for their solar panel installation, as larger systems equate to lower unit costs. That said, you may also want to consider your monthly electricity consumption and design your solar system to fit your daytime electricity needs," says Solar AI.



More than 1.3 million UK households now have solar panels. A typical three-bedroom home will save up to £454 a year on its energy bill with a solar panel system. Solar panels can help you cut your carbon emissions by ???



Ground Mounted vs Roof Mounted Solar Panels. There are various pros and cons to ground mounted and roof mounted solar panels. Here is a summary of how they compare: Benefits of Ground Mounted Solar Panels. A bigger system ??? being able to install more, larger and heavier panels that may be restricted on a roof space means you will produce more



This will give the solar panel mounts a stable foundation, and will make sure they don't get damaged in stormy weather. Solar panel mounts are secured ??? Once the roof anchors have been fixed to the property, the installer will attach the solar panel mounting system to them. The framework will run both vertically and horizontally across the

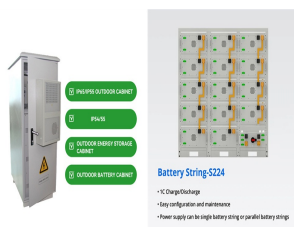


The integration of photovoltaic (PV) panels and green roofs has the potential to improve panel efficiency to produce electricity and enhance green roof species diversity and productivity.

PHOTOVOLTAIC PANELS INSTALLED ON RURAL ROOFS FOR PERSONAL USE



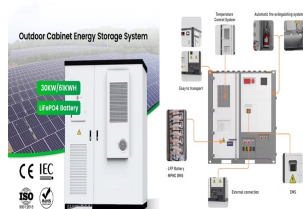
Flat roof PV systems are generally installed in the form of concrete columns and PV brackets. The investment cost is not high and the economy is better. On a horizontal roof, we can determine the angle of the PV panels by adjusting the brackets so that the PV system receives the most light radiation to obtain the maximum power generation. The biggest benefit of installing PV power ???



Leaders in Farming Solar Panel Installations. We Design, Install, and Maintain Solar. Trustpilot. Get a Quote. Find out if we cover your area Most farms and agricultural businesses have buildings that are suitable for roof mounted solar PV installations. Agricultural buildings typically have a have 10-15° roof pitch, which will generate



Preliminary Steps for Solar Panel Installation. Before starting with your rooftop solar panel system, make sure to do some key steps. You need to look at how much electricity you use now. Then, you decide on the right solar ???



Greentech Renewables has organized crucial insights to help solar installers understand the most cost-effective and safest options when working on metal roof solar installations. The following article covers various metal roof types and their associated racking methods, reviews industry-leading metal roof racking equipment, and offers best practices in installing PV systems on ???

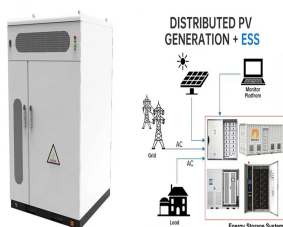


Before beginning the installation, it's important to assess the suitability of your roof for solar panel installation. Factors to consider include the roof's orientation, angle, and structural integrity. Ideally, the roof should be ???

PHOTOVOLTAIC PANELS INSTALLED ON RURAL ROOFS FOR PERSONAL USE



In fact, the average residential solar panel system in the UK saves 0.7 tonnes of carbon dioxide each year. the more panels you'll need to install. So, the bigger the roof, the better. If you find yourself running out of room, you can opt for premium, high-efficiency models. Although more expensive, a small number of high-efficiency



Solar energy Summary and introduction 1. The Campaign to Protect Rural England (CPRE) recognises that solar energy has an important role to play in meeting future energy needs. It helps increase energy security and diversity, while making a significant contribution to meeting the UK's targets of producing 15% of our energy consumption from



A 4kW agricultural solar farm project will cost in the region of £4,000 where as a 50kW solar photovoltaic panel installation can cost about £30,000 in the UK both including installation and VAT. A 200kW agricultural solar panel system comprising of 800 solar panels generating enough power to run 40 homes and save 100 tonnes of CO2 every year, can cost around £180,000 ???



Conversely, if the distance is too great, the cooling effect of plants on PV panels may be diminished. PV panels are commonly installed at distances ranging from 0.18 cm to 1 m from the roof plane, with their performance contingent upon factors such as roof wind speed, selected plant species and height, and PV module material.

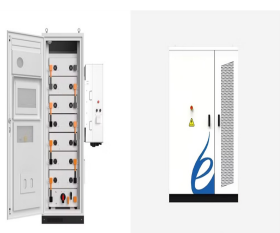


Here is a stepwise description of how to install solar panels on the roof:
Step 1: Identify the Roof Space . Solar rooftop panels are installed using solar mounts. Identifying the area for solar panel installation helps determine ???

PHOTOVOLTAIC PANELS INSTALLED ON RURAL ROOFS FOR PERSONAL USE



Solar Panel Installation on Tiled Roofs: Best Practices for Mounting Roof Rails, Hooks, Connecting Panels To Rails and Safety Installing solar panels on roofs is a popular choice for several reasons: low chances of shade from nearby objects, ample space that serves no other purpose, and closeness to your home.



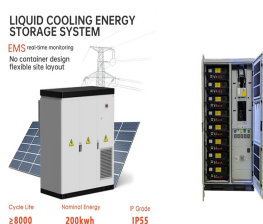
Rooftop photovoltaic (PV) power generation uses building roofs to generate electricity by laying PV panels. Rural rooftops are less shaded and have a regular shape, which is favorable for laying PV panels. However, ???



Before installing solar panels, evaluate the condition of your metal roof. If it's nearing the end of its lifespan, consider replacing or renovating it before the solar panel installation. Maintenance. Though metal roofs require minimal maintenance, periodic inspections are vital. Check for any signs of corrosion, especially in coastal



Rooftop solar panel systems are ultimately restricted by the characteristics of the roof on which they are installed. If your roof is not set at the right angle (such as not facing south), or is obstructed by things like shade ???



The main distinction is that BAPV's are fitted on existing surfaces that comprise the structure (like flat or tiled roofs), whereas BIPV's essentially replace construction elements and the panel becomes part of the building (potentially facade or roof element). It is still uncertain whether the PV's were the initiating cause of the fire.

PHOTOVOLTAIC PANELS INSTALLED ON RURAL ROOFS FOR PERSONAL USE



If you are looking for a reliable and experienced contractor who can install solar panels on a metal roof in the UK, look no further than NXTGEN Energy. We have experience in completing all kinds of solar panel installations, including fitting solar panels on slate roofs, integrated systems, and yes, even solar panels on metal roofs.

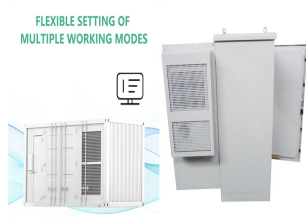


Rooftop solar panel systems are ultimately restricted by the characteristics of the roof on which they are installed. If your roof is not set at the right angle (such as not facing south), or is obstructed by things like shade ???



Here's how a solar panel installation works from start to finish, and what you should do before and after the installation. If any part of your roof is broken during your solar panel installation, the company should fix it or fully compensate you for the damage before the end of the project.

Related Reading. The 10 best solar panel

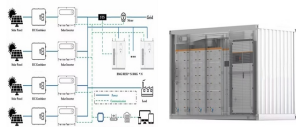


Solar panels can be designed to fit the space you have, accommodating for chimneys and unusual roof shapes. The average 3.5kWp solar PV system will take up around 20m² of roof space, which is the same as about two car parking spaces. A south facing roof is ideal for generating the most electricity from the sun, but panels facing east or



They can be installed on south-facing roofs, walls or on the ground, and can be fixed or have a solar tracker that follows the sun across the sky. The solar cells within a solar panel produce direct current electricity from sunlight. The solar panels consist of several solar cells which contain layers of photovoltaic material, usually

PHOTOVOLTAIC PANELS INSTALLED ON RURAL ROOFS FOR PERSONAL USE



are not intended for single residence dwellings (detached or connected), or to roof-integrated PV panel systems, i.e. those where the PV panels form part of the building envelope. While commercial ground-mounted PV systems are not covered in detail in this guide, the risk control principles discussed are similar.



Solar panel installation on a flat roof can positively impact your property's value. Studies have shown that homes with solar panels typically sell for more than homes without solar. Additionally, with the increasing demand for renewable energy and the growing popularity of solar, having a solar panel system can make your property more attractive to potential buyers, ???



See also: Plumbing Vent Under Solar Panel (Important Planning) Step 4: Mounting the Panels. See also: Don't Use Romex for Solar Panels! (Use These!) How to install solar panels on the roof . In short, the solar panels connect to a roof-mounted frame. The solar panels sit on the frame and are clamped with either a bolt, bracket, or other