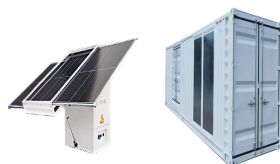


PHOTOVOLTAIC PANELS SUITABLE FOR BUILDING SUN SHEDS



Discover our solar PV solutions exclusively designed for agricultural buildings and farms of all types and sizes, whether you need ground-mounted panels or roof installations. also known as photovoltaic (PV) panels, are at the heart of ???



The amount of electricity a solar PV system installed on a shed roof can generate comes down to the number of solar panels, direction of the roof and the efficiency of the panels. Typically, a shed roof is smaller than the house it belongs to, ???



It does this via a process called the photovoltaic effect and helps make heating a shed in winter a lot easier. Some solar powered heaters come with solar panels that need to be installed on a roof, wall, or window ??? basically, anywhere it can catch the sun. Some solar collectors may be heavy or reflect to cause glare into your neighbours



The more solar panels you install, the more expensive it will be. The make, model, and type of solar panel will also affect the cost. Benefits of solar panels on a shed. There are many benefits to having solar panels on a shed, including: Being able to fully power the shed with solar panels; Supplemental panels for your main solar panel system



Agricultural Solar Panels. Mypower has a proven track record of providing energy solutions in the agricultural sector which deliver real benefits and savings. Solar panels for farm buildings. High and volatile electricity costs are adding to the escalating overheads faced by UK farmers which affect profitability.

PHOTOVOLTAIC PANELS SUITABLE FOR BUILDING SUN SHEDS



How much do thin-film solar panels cost? You'll pay around \$1.04 per watt for thin-film solar panels, or roughly \$6,240 for a 6 kW system. That's cheaper than the cost of a 4 kW solar panel system, which will typically set you back \$6,500.. The problem is that thin-film solar panels take up more space, because with a lower efficiency rating, you need more ???



Are solar panels suitable for a shed roof? Can I put solar panels on my shed roof? In a word, yes. But that "yes" comes with some "ifs" and "buts" attached. Solar Photovoltaic (PV) panels that generate electricity can effectively be installed on the roof of any structure that is robust enough to take their weight.



Suitable for all types of installations ??? the most common type of solar panel: Suitable for low-cost residential installations: Suitable for awkward spaces or buildings, where thicker solar panels not appropriate: Pros: This is the most efficient solar panel ???



Solar photovoltaic (PV) panels that use polycrystalline silicon cells are a promising technique for producing renewable energy, although research on the cells' efficiency and thermal control is still ongoing. This experimental research aims to investigate a novel way to improve power output and thermal performance by combining solar PV panels with burned fly ???



The bifacial photovoltaic panels can absorb solar energy from sunlight on the front surface and by reflected light on the rear, maximizing the amount of energy produced per square meter.

PHOTOVOLTAIC PANELS SUITABLE FOR BUILDING SUN SHEDS



This solar lighting kit includes 1 x 5w solar panel, 1 x panel bracket, 1 x 10Ah battery hub, 1 x 5m hub/ LED cable, 2 x 3w LED strips, 1 x fixing pack and an instruction manual. Simple to install, using a plug and play system, and ???



Following a consultation by the UK Government, Solar Energy UK predicts that compulsory solar panels will be included in the upcoming Future Homes Standard and Future Buildings Standard (due for publication in late 2024). The support for solar panels to become compulsory on new builds is growing.



With the addition of a solar panels for sheds and other solar equipment such as solar power stations and lighting, you can suddenly transform your shed from a basic garden storage area into a fully functioning garden building.. Incorporating solar power for sheds allows your shed to say goodbye to darkness, cobwebs and rusty, old tools, and hello to lighting, ???



Depending on your shed needs, you may choose solar panel kits or roof-mounted solar panels which are more efficient, durable, and suitable for long-term usage. Ideally, a solar panel installation package with a solar battery and a 10-year warranty saves you from the hassle and dangers of DIY solar kits.

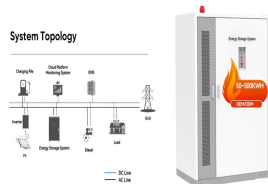


This solar panel from SOLPERK holds 200 watts which will be suitable for any appliances and tools that you have in your shed. Items Included In A Shed Solar Panel Kit. The solar panels ??? this will collect the ???

PHOTOVOLTAIC PANELS SUITABLE FOR BUILDING SUN SHEDS



Panel size is varied, but how many solar panels for sheds are needed is vital to know, too. For basic needs, like lights and charging smaller devices, a 50W panel setup can be enough. But if you're going bigger ??? by running underfloor heating, perhaps ??? then you're going to want at least three 150W solar panels to do the job.



Solartech Premium Garden Building Solar Lighting Kit 7 - Suitable for Buildings up to 5m x 4m (16" x 14") Special Price £294.99. Was £339.99. 6x4 Sheds . 8x6 Sheds This solar lighting kit includes 1 x 10w solar panel, 1 x panel bracket, 1 x 10Ah battery hub, 1 x 5m hub/ LED cable, 1 x ceiling bulb holder, 2 x floor lamps, 2 x 3.5w



A 4m2 to 5m2 shed can potentially hold a 750W to 1kW solar panel system while a 12m2 shed can house a 3kW system. It can cost between £2,000 to £6,000 to install solar panels on a shed roof. If you have the right ???



Remember, some appliances only require power for a few minutes a day, while others, such as fridges and routers require a constant supply. Generally speaking, if you want to use your garden shed as a self-sufficient home office all year round, you will need panels totalling 700W, while a simple garden lounge with lighting and a TV, but no heating, will require no more than a 100W ???



A selection of solar panel kits, designed for use mostly in one place (rather than on-the-move). Everything needed to power your project. Solar Power Kits (off-grid) for Buildings, Remote Sites, Sheds etc. Shopping Cart. View Cart; Call us on 01708 223 733. Home; About Us; Delivery & Returns; Solar Power Kits (off-grid) for Buildings

PHOTOVOLTAIC PANELS SUITABLE FOR BUILDING SUN SHEDS



For the solar panel / heat pump heat solution, the Dualsun SPRING panel produces 4 times more energy per m² than a standard photovoltaic panel. For all types of homes and heated buildings. Dualsun SPRING panels are suitable for residential, commercial and industrial buildings.



Find out if solar panels are something for your shed from our guide. Look at prices, advantages & more! 0330 818 7480. Become a Partner An eco-friendly solar panel shed roof system will probably take up 2m² per panel. Solar panels can be smaller but we're using a higher estimate to account for potentially large sizes and other factors



Discover the five best solar panel kits for sheds in 2024. Solar Panels: 2 x 400W panels; Solar Panel Charging Time: 3.2 hours to 6.3 hours ; Pros . Compact and lightweight panels fit on almost any shed roof; Some panels ???

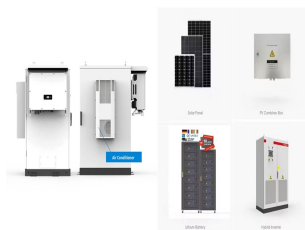


LI??H?? ? >?? 3/4 ??????-f?Fvc ? 1/4 L?? H ?
 ?4t?AE?????um"???%G"l3?????f?] ?iH ??0????@??? "?? "??
 "?(R)|?? ????m?L-%?



Solar Energy UK 14 December 2023 Solar photovoltaic (PV) panels are expected to be part of a default package to meet forthcoming rules on the energy. Skip to Navigation unambiguously recommending the adoption of solar PV spanning 40% of the building's foundation area and heat pump heating for buildings lit from the side (such as offices

PHOTOVOLTAIC PANELS SUITABLE FOR BUILDING SUN SHEDS



Benefits of Solar Panels on a Shed. Sustainability: Solar panels harness the sun's energy, providing a green, renewable power source choosing solar energy, you're actively reducing your carbon footprint. Cost Savings: After the initial investment, the running costs are minimal. Over time, you'll find that solar panels can lead to substantial savings on electricity ???

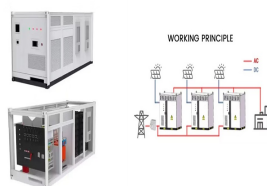
TAX FREE



This wonderful solar lighting kit includes 1 x 10w solar panel, 1 x panel bracket, 1 x 10Ah battery hub, 2 x floor lamps, 1 x table lamp, 2 x 3.5w vintage bulbs, 1 x 0.8w vintage bulb, 1 x splitter cable, 1 x fixing pack and a simple step-by-step guide.



The SolShare solution is essentially a smart diverter that enables solar energy from a single rooftop solar system to be shared between multiple apartments within the same building. To make the system as efficient as possible but also fair, the SolShare delivers the same amount of solar energy to each apartment over the course of a month but supplies it when it's ???



Solar panels, also known as photovoltaic (PV) systems, convert sunshine directly into electricity. The following guidance is intended to help property owners and those involved in managing, maintaining, or making changes to historic buildings understand the issues to be considered when designing and installing solar power systems.