

PHOTOVOLTAIC PANELS WITH YELLOW LINES OF DIFFERENT SIZES



Discover which solar panel sizes and dimensions are the most common in the UK, as well as which size is the best for your home. 0330 818 7480. Become a Partner. Menu. Solar Panels Different types, such as monocrystalline, polycrystalline, and thin-film, vary in size and efficiency, with monocrystalline being more efficient and compact



Solar Panel Size. It focuses on maximum electricity generation and overall capacity rather than the quantity of panels. To calculate the required system size, multiply the number of panels by the output. For example, a 6.6 kW solar system typically consists of 20 panels each delivering 330W of power. Solar Panel Wattage



Source: Mission Solar Energy Usually, residential rooftop solar panels are approximately 65 inches tall, 40 inches wide, and 2 inches thick. In feet, that would be 5.4 ft. by 3.3 ft.. Commercial solar modules are usually slightly larger in length and width only.. However, with greater technological innovations in recent years, there is no longer a clear cut distinction ???



To select the right solar panel size, it is important to know the standard solar panel sizes available on the market. Every solar panel consists of solar cells, which are typically 6-by-6 inches.



To connect solar panels in parallel, you require an additional component known as an MC4 combiner (or MC4 multi-branch connector), this name differs for other types of solar panel connectors. The image above ???

PHOTOVOLTAIC PANELS WITH YELLOW LINES OF DIFFERENT SIZES



In practical engineering applications, natural air cooling is often utilized for photovoltaic (PV) facades. However, the natural-air-cooling method is not effective at cooling PV wall panels, and the high temperatures accumulated on the surface of PV panels not only affect the electrical efficiency and service life of the PV modules, but also increase the energy ???



Solar panels come in different sizes, ranging from small ones used in portable devices to large ones used in commercial installations. The size of a solar panel is measured in watts, which indicates the amount of power it can generate. The most common solar panel sizes for residential installations are between 250W and 400W, while larger



For example, the equivalent of a 60 cell solar panel is a 120 half-cut cell solar panel. The equivalent of a 72 cell solar panel is a 144 half-cut cell solar panel. 120 half-cut cell solar panels are roughly the same size as 60 ???



Dimensions of the most common solar panel sizes: Solar panel size: Dimensions: Grid size: 60-cell solar panel: 3.25 feet x 5.5 feet: 6 x 10: 72-cell solar panel: 3.25 feet x 6.42 feet: 6 x 12: 96-cell solar panel: 41.5 inches x 62.6 inches 8 x 12

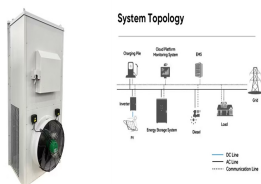


Which type of solar panel is best for me? If efficiency is most important to you: Monocrystalline panels have a higher level of efficiency, between 15% and 24%. If you want to keep costs down: While solar panels are an investment no matter which ones you choose, polycrystalline panels cost less per watt. If you have limited roof space: You'll get more for ???

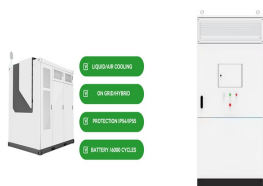
PHOTOVOLTAIC PANELS WITH YELLOW LINES OF DIFFERENT SIZES



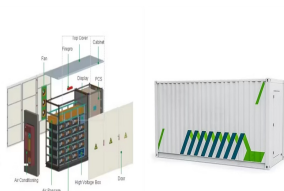
Understanding different solar panel sizes may seem a bit overwhelming at first glance, but it's absolutely essential if you're looking to make a smart investment. With the right solar panel ???



Different solar panels generate different amounts of energy, and this capacity to produce power isn't just about size. For example, a smaller sixty cell solar panel with an efficiency of 20% can generate more electricity than a seventy-two-cell unit that only has an efficiency of 15%. We measure the power that a solar panel generates in Watts



Starting your solar energy journey means understanding solar panel size chart and solar panel dimensions. This is vital for everyone, from home to business owners, looking to shift towards clean energy. Learning about different solar panel types, like 60-cell, 72-cell, and 96-cell, is key to optimizing solar panel efficiency. When you match the



Microsoft Cookie ??????,???



Defining Solar Panel Size: Dimensions Explained. A solar panel's size refers to the area it covers. The standard sizes for residential solar panels tend to be around 65 inches by 39 inches, while commercial variants ???

PHOTOVOLTAIC PANELS WITH YELLOW LINES OF DIFFERENT SIZES



Coloured photovoltaic panels represent a new frontier in solar energy. Combining sustainability and design, they allow renewable energy to be integrated into architectural, historical and landscape contexts where aesthetics are paramount this article we will discover why the use ???



The easiest way for homeowners to figure out the best solar panel size for their needs is to work with a dedicated solar installer. Solar installers will size your system based on your energy needs, coupled with your available roof space and the sunlight in your area. They can recommend a system size that can fit on your roof and reduce or



Residential solar panels typically possess between 250W to 450W depending on how efficient they are in converting sunlight into energy and the solar panel sizes. Standard Solar Panel Size. Solar panels are available in a wide range of sizes, types, and total wattage. The standard solar panel size measures an average of 5.4 by 3.25 feet or 65 by



????,? There are different configurations of solar cells that make up a solar panel, such as 60-cell, 72-cell, and 96-cell. ?????,? The most common solar panel sizes for residential installations are between 250W and 400W.



A common question homeowners face: what dimension of solar panel do you need? Are there standard solar panel dimensions? Residential solar panels generally do come in standard sizes. But there are caveats. For example, if your roof is irregularly sized, it may be more challenging for your solar panel installation contractor to source

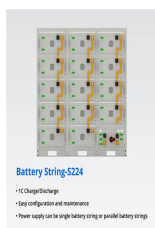
PHOTOVOLTAIC PANELS WITH YELLOW LINES OF DIFFERENT SIZES



Panel Options. Clearline fusion PV16 solar PV panels for roof integration are available in a range of sizes and power outputs. Combined with the ability to install in both portrait or landscape, this gives building designers and installers options to either maximise the power output of the available roof area, or to cost-effectively deliver a particular target power (for example to meet



Table 1: Solar panel cable for amp chart for 90°C (194°F) Copper. Amperage tables exist for copper cables reflecting the current carrying capacity of the different gauge cables at different operating temperatures. Temperatures as high as 150°C are considered when selecting cables for wiring up solar panels.



Based on FMB's best solar panels, the average solar panel dimensions in the UK are: Solar panel size: 1,945.5mm (length) x 1,130.1mm (width) x 31.25mm (height) Weight: 23.6kg While there isn't much variation in width (six of our eight best panels measured 1,134mm) and height (all but one was 30mm tall), there were significantly different lengths.



The size of a 300w solar panel A 300w solar panel is generally a popular choice for residential applications and small commercial systems thanks to its balance of performance and footprint. A panel of this wattage can generate enough energy to power multiple home appliances and significantly help reduce energy costs.



Here are the six main types of solar panel, including monocrystalline, polycrystalline, and thin-film, and the best type for your home. But Dow scrapped its solar tile product line in 2016, and its most famous successor, Tesla's Solar Roof, still isn't available in the UK. That's despite Elon Musk announcing in spring 2019 that it'd

PHOTOVOLTAIC PANELS WITH YELLOW LINES OF DIFFERENT SIZES



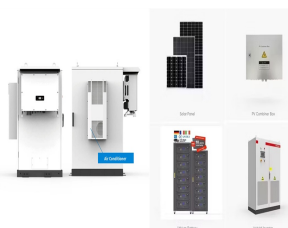
The goal here is to get to the average solar panel size by wattage. You can find typical dimensions of 100W, 150W, 170W, 200W, 200W, 220W, 300W, 350W, Note: You can allow for up to a 5% difference in both length and width due to ???



Solar panel sizes can vary, and choosing the appropriate size is crucial for optimising energy production and maximising savings. In this article, we'll delve into the different solar panel sizes available in the UK and provide guidance on selecting the best fit for your property. Understanding Solar Panel Sizes



Below, you can find an overview of the different solar panel sizes and systems to get an idea of which options would be suitable for different house sizes. Solar Panel System Sizes (350W Panels) House Size Average Yearly Energy Consumption System Size Number of Solar Panels; 1-2 bedrooms: 1,800kWh: 3kW: 8: 2-3 bedrooms:



The number and efficiency of the solar cells a solar panel contains determines the wattage rating. A Higher-wattage solar panel generally has larger dimensions. Moreover, they incorporate more solar cells to produce more electricity. Factors Influencing Solar Panel Size. Several factors influence the size of solar panels: 1.



From full black to snow white ??? variety of solar panel color options is where Metsolar stands out.. We are an EU manufacturer of Building Integrated Photovoltaic (BIPV) solar panels for commercial and residential buildings. Our extensive experience in design, development, and manufacturing modules and PV IGU units makes Metsolar the exceptional BIPV provider for ???

PHOTOVOLTAIC PANELS WITH YELLOW LINES OF DIFFERENT SIZES



Residential and Commercial Solar Panel Sizes. Solar panel sizes vary greatly depending on their use. A residential solar panel is typically smaller, aiming for around 65 inches by 39 inches in size. Meanwhile, commercial panels, due to their higher energy demands, are larger, nearing dimensions of approximately 78 inches by 39 inches.



Metsolar manufactures semi transparent glass/ glass, glass/ backsheet BIPV solar panel options with possibility for variations in size, shape, transparency, JB, etc. For seamless solar glass ???



What Are the Standard Solar Panel Sizes? When it comes to standard solar panel sizes, like 300w or 500w, it is essential to determine the size of a solar panel system based on these standard sizes. The dimensions of a ???