

# PHOTOVOLTAIC ROOF SUPPORT INSTALLATION AND WIRING



What is a roof mounted photovoltaic system guidance? The guidance refers only to the mechanical installation of roof mounted integrated and stand-off photovoltaic systems; it provides best practice guidance on installation requirements and does not constitute fixing instructions.



Can a photovoltaic system replace roof cladding? It is possible for photovoltaic systems to replace roof cladding entirely. This is known as a solar or energy roof. Additionally, PV modules can be integrated into the roof cladding. Solar roof tiles are a special type of in-roof installation. They can be integrated into the existing roof cladding without any extra mounting systems.



Can a PV system be integrated into a flat roof? In some cases, PV systems can be integrated directly into flat roofs (Figure 25), although this is not common because the efficiency of PV modules is reduced because the optimum angle relative to the sun is not achieved.



How do I choose a photovoltaic roof installer? Finally, it's important to consider the type of roofing material on your home or business. This will determine how the mounting hardware is attached for optimal performance. Once all these elements have been determined, you'll need to identify a qualified installer who has experience working with photovoltaic systems on rooftops.



How do I install a rooftop solar panel system? 1. Plan and Design Your Rooftop Solar Panel System The first step in installing a rooftop solar panel system is to plan it out carefully. You want to make sure that the size of your system will meet your electricity needs, and that you have chosen an appropriate site for installation.

# PHOTOVOLTAIC ROOF SUPPORT INSTALLATION AND WIRING



Can a PV system be installed on a roof? A PV system can be installed in two different ways. One possibility is on-roof mounting. In-roof mounting is an additional. Here, portions of the roof covering are replaced by PV modules, which turn into a crucial component of the roof cladding.



Here's how a solar panel installation works from start to finish, and what you should do before and after the installation. which the average roof can easily support ??? but with ballasts, this figure increases to 1,200kg. ???



Discover a guide on how to mount solarpanels on roof yourself. Learn about solar panel roof installation, attaching solar panelsto roof and more. Call us 24/7. 509-201-4190. Text Us. that supports your roof, and they need to be capable of supporting the Connect the positive wire from the last solar panel in the series to the positive



The choice of racking depends on several factors, including roof integrity, space, orientation, and exposure to sunlight. The mounting structure must be strong enough to support the solar array for decades and withstand environmental factors such as wind and snow loads. Electrical Wiring: Once the array is mounted, the electrical wiring is



Wiring methods for solar photovoltaic systems Rules 2-034, 64-066, 64-210, 64-216, 64-220, Tables 11 and 19 Issued October 2023 Supersedes Bulletin 64-4-3 Scope 1) Introduction 2) Cable types RPV & RPVU 3) Wiring methods within photovoltaic array a) Acceptable wiring methods within an array b) Photovoltaic combiner box c) Cable support

# PHOTOVOLTAIC ROOF SUPPORT INSTALLATION AND WIRING



Follow our step-by-step guide to solar PV system installation, from consultation to energy savings! - Evaluate your roof space : The roof will be assessed for available space, orientation, shading, and structural integrity. - Wiring and battery options : The system design will include details on wiring, electrical connections, and



The National Roofing Contractors Association (NRCA) produces manuals that discuss best practice guidelines for all aspects of roofing systems, including PV module installation. The Center for Environmental Innovation in Roofing (CEIR) attempts to improve communication between the roofing and PV industries. To do this, it created the Center PV



One of the primary considerations for solar panel installation is the roof's structural integrity, which is typically the critical support structure for the panels. maintenance access, and cooling of the panels. Additionally, sufficient space must be left for wiring and conduit routing. Roof slope: Installing solar panels on a sloped roof

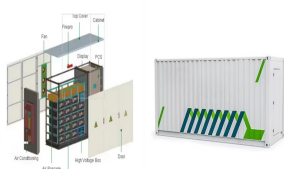


Solar Roof is comprised of various components, like PV tiles and non-PV tiles, metal flashings that enhance the aesthetic of your roof and solar inverters. Together, these components capture sunlight to produce DC electricity and convert it to AC electricity that can be used to power your appliances. Learn more about what Tesla installs at your



Generally, roof mounted systems are less expensive than ground mounted systems, because the main structure needed to sustain the panels is the rooftop itself. This saves costs that otherwise would rise higher due to the ???

# PHOTOVOLTAIC ROOF SUPPORT INSTALLATION AND WIRING



4.1 General Wiring Procedures for PV Laminate Roofing Systems 25 Wire Selection Wiring UNI-SOLAR PV Laminates with Quick Connect Terminals Technical Information about Quick Connect Terminals Grounding 4.2 Maintenance 29 PV Laminates on Membrane Roofing System Commissioning and Trouble Shooting



??? Solar panel installation is much easier if you have a useable loft space. Before you get solar panels, you'll want to know whether your roof is ready and able to support them. Thankfully, most residential roofs in the UK are strong enough and pitched at a decent enough angle ??? and most other obstacles can be navigated.



A solar photovoltaic (PV) system, mounted on the roof or integrated into the Rooftop Solar PV Installation growth trends Ohmic wiring losses 0.5 - 2% Inverter losses 1 - 8% Reflection losses 1.5 - 3% Horizontal irradiation 100%. Five minute guide: Rooftop Solar PV



It is only after getting permission from utility providers that you can complete the final connections between your home wiring and this solar panel system. Step 5: Testing and Activation. Before activating the photovoltaic installation all wire connections ought to be double checked while voltage levels need monitoring as well .



The installation process typically takes several days to complete, depending on the size of the system and the complexity of the installation. During the installation process, the photovoltaic panels are mounted on the roof or on a ground-mounted system, and the wiring and electrical components are installed.

# PHOTOVOLTAIC ROOF SUPPORT INSTALLATION AND WIRING



Support and PV module installation. Bracket installation: c. Solar panel wiring. When transporting photovoltaic modules on the roof, there must be a wooden board to lay a safe passage. It is forbidden to use pallets instead, which is easy to cause roof damage. 12) PV modules must be lifted by crane, and manual handling to the roof is



In fact, your roof may be in more need of TLC than the solar panels you want installed on it. So first, a professional surveyor will check your roof and rafters to ensure that a solar panel installation can go ahead safely. The results of the ???



In this article, we will discuss the basic wiring diagram for solar panel installation, including the components and steps involved. the solar panels are mounted on the roof or ground-mounted using appropriate mounting brackets. Ideally, the panels should be placed on a south-facing roof with minimal shading. Make sure the roof is



Solar panel racking and mounting installation For roof-mount kits, the first step is to mark the location of your roof rafters. These support beams will act as the foundation for your solar array. If your rafters aren't visible from the outside, you can buy a stud finder or measure their location from the inside of your attic.



The Safe DC??? function minimises the risks caused by power surges and lowers the operating temperature of the panels, thus extending their life. All wiring related to the installation is located under the roof covering in dedicated steel profiles. ???

# PHOTOVOLTAIC ROOF SUPPORT INSTALLATION AND WIRING

---



The utilization of solar energy has gained immense popularity as a sustainable power source and Solar Panel Installation on rooftops is a common method of harnessing this renewable energy. In this article, we will provide a ???



The mounts will support the solar panel at the optimum height above the surface to enable ventilation from underneath, ensuring the solar panel functions as efficiently as possible. Brackets are screwed or bolted to the solar module using suitable stainless steel self-tapping screws and then bonded to the roof surface using Sikaflex 521 UV adhesive.



Ensure the solar panel's positive wire is connected to the positive end of the inverter. Roof-mount solar panel installations are less intrusive and invasive, and there is no need for extensive pre- and post ???

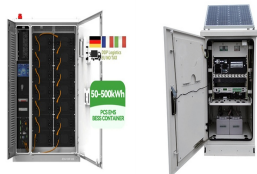


The utilization of solar energy has gained immense popularity as a sustainable power source and Solar Panel Installation on rooftops is a common method of harnessing this renewable energy. In this article, we will provide a step-by-step guide on how to successfully install solar panels on your roof, ensuring efficiency and compliance with regulations.



This publication provides practical guidance on the installation of roof-mounted renewable energy systems and complements existing guidance contained in other sources including the NHBC Standards Chapter 3.1 Low or zero carbon technologies and the

# PHOTOVOLTAIC ROOF SUPPORT INSTALLATION AND WIRING



One of the most important aspects of any solar PV installation on a metal roof is wire management, but even seasoned professionals can find this task confusing. From ensuring proper conductor positioning during module installation to keeping wires clear of the roof and seamlessly connecting your array of modules to the inverter, the process demands attention to ???



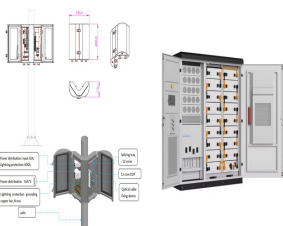
Looking to install a photovoltaic (PV) system? Our detailed guide provides step-by-step instructions for pitched, in-roof, and flat roof mounting. Avoid common mistakes and ensure a seamless installation process for maximum efficiency ???



This section will guide you through the installation process, which includes assessing roof suitability, preparing the roof for installation, mounting the solar panels, and wiring and connection. Assessing Roof ???



Solar Panel Installation Slate/Tile Roof Mount Installation 7 12 If it fails, contact Hoymiles Customer Support to obtain an RMA number and start the replacement process. Damaging or opening a Micro-Inverter ENPHASE MICRO-INVERTER INSTALLATION 1. System Wiring Diagram 2. Once you have completed installing the roof mount system, attach



In this article, we will provide a step-by-step guide on how to successfully install solar panels on your roof, ensuring efficiency and compliance with regulations. Evaluating Roof Suitability. Before proceeding with the ???