

PHOTOVOLTAIC ROOF SYSTEM BOTSWANA



Gaborone is located at a latitude of -24.66° . Here is the most efficient tilt for photovoltaic panels in Gaborone: Orientation. Your photovoltaic panels need to be angled facing north. Fixed tilt. If you're mounting the photovoltaic panels at a stationary angle, such as on your roof, the most efficient angle is 21.45° . 2-Season tilt



Akata (2021) reported that a 35 m² BIPV rooftop system in the tropics increased the indoor air temperature of the building by approximately 5 °C, whereas Dominguez et al. (2011) demonstrated that the PV array significantly reduced the heat flux on the roof during the day and maintained the indoor environment warm at night, which demonstrated



Golden Alfa Innovation Award. The Golden Alfa Innovation Award was given by the Spanish Ceramic and Glass Society for the development of SKIN-KER (R) by Tejas Borja, an installation system that creates a self-ventilating roof with large-format and extensive flat ceramic fa?ade tiles, wrapping the whole building in a product of equal quality and appearance.



A roof-mount solar system is a photovoltaic (PV) system that generates electricity through solar panels mounted on a rooftop. Owing to their easy installation and low maintenance, roof-mount solar panels are ideal for residential and commercial purposes. A few variants of ground-mount solar panel systems change their facing according to the



Botswana solar thermal systems tenders latest Botswana solar thermal systems tenders and bids find Botswana solar thermal systems bids RFPs RFQs government contracts public procurement Construction Of A Pv System On The Roof Of The Urmitz Primary School. Country: Germany . Notice Type: Tender Notice. Deadline: 05 Dec 2024. Posting ???

PHOTOVOLTAIC ROOF SYSTEM BOTSWANA



The dawn of renewable energy has brought solar technology to the forefront of sustainable development, with the solar roof mounting system playing a pivotal role in this green revolution. The design and construction of ???



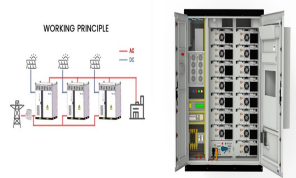
The overarching goal of Botswana's National Energy Policy is to provide an affordable, reliable and adequate supply of energy for sustainable development, as well as to grid-tied solar PV systems either roof or ground mounted; ii. Guidance that will assist in the development of applicable rules, regulations, tariffs and processes;



A flat roof is the ideal place for a solar photovoltaic installation to generate site-sourced electricity. Renewable energy generation has a big role to play in the delivery of a net zero carbon building and integrating renewables allows it to ???



Applications for solar roofs: Roof integration: Kalzip solar modules can be integrated into the roof to provide an aesthetically pleasing and seamless solution for power generation. Façade integration: The solar modules can also be ???



Sika(R) SolarMount-1 (SSM1) - an aerodynamic, non-penetrating and lightweight mounting system specially designed for the installation of rigid photovoltaic (PV) panels to flat rooftops, covered with Sika roofing membrane. The key component is the Sika-designed "Sika SolarClick" fastener, which is produced of compounds perfectly matching Sika's PVC and FPO membranes and is ???

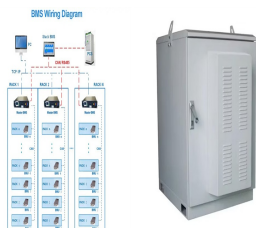
PHOTOVOLTAIC ROOF SYSTEM BOTSWANA



(5) All rooftop solar PV system installations must comply with the relevant connection specifications of BPC, applicable grid code, the Botswana Bureau of Standards and any other relevant internationally recognized PV installation standards as may be specified by the Authority and BPC from time to time .



Botswana Solar Photovoltaic (PV) System Market is expected to grow during 2023-2029 Botswana Solar Photovoltaic (PV) System Market (2024-2030) | Growth, Share, Analysis, Size & Revenue, Companies, Trends, Industry, Outlook, Segmentation, Value, ???



Solar Panels Prices in Botswana. Jinko Solar PV Panel MONO 335 W. P1,625.00. New Arrival. Jinko Solar PV Panel 460 W Mono-Facial. So if you add all the other components, labor, design, permits, etc., as a rule of thumb assume a roof mounted system is about \$1000 a panel and a ground mounted system will run about \$1200 per panel. Can solar



Sika(R) SolarMount-1 (SSM1) - an aerodynamic, non-penetrating and lightweight mounting system specially designed for the installation of rigid photovoltaic (PV) panels to flat rooftops, covered with Sika roofing membrane. The key ???



Energy-efficient: Integrating photovoltaic glass into fa?ades reduces reliance on external energy by converting sunlight into electricity, all while allowing natural light to illuminate the building's interior.; Electricity-Generating Surfaces: Transform typically unused surfaces into energy-producing elements without altering the design.; Superior insulation: The PV glass provides ???

PHOTOVOLTAIC ROOF SYSTEM BOTSWANA



There are numerous on-going initiatives being undertaken in the solar sector in Botswana. This page provides a brief overview of initiatives for awareness purposes" ??? the structure is completely off. (Mini-grids) ??? Solar PV ??? 2 under construction (2022), 3 awarded (2023) 7 remaining sites (2024) 10MW ??? Coal Bed Methane (CBM



This helps maximize the amount of solar energy your roof can produce. Control your system with 24/7 mobile monitoring from anywhere in the world. Manage all your Tesla products through the Tesla app and customize your system production to fit your preferences. A Roof That Helps Pay for Itself. Tesla Solar Roof helps pay for itself over time.



Building envelope i.e., roof and outer walls are in direct contact of incoming solar radiation on an urban and building scale, therefore urban trees, green walls, and green roofs are excellent ways to reduction in energy demand, solar heat gain, increase indoor thermal comfort and rain water management (Chakraborty and Lee, 2019, Yang et al., 2020, Tabatabaee et ???

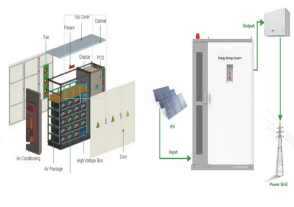


The focus of this study is to design and simulate a grid tied solar PV system for a higher institution of learning using University of Botswana, Faculty of Engineering and Technology building as a



The Botswana Roof Top Solar (RTS) Scheme provides residential and commercial clients with the ability to install grid-tied and hybrid solar systems and feed power back into the grid. The surplus energy that is fed back into the ???

PHOTOVOLTAIC ROOF SYSTEM BOTSWANA



No elevated system - mounted flat and parallel to the roof; Use inexhaustible solar energy - absorb the sun's rays, generate electricity, feed it into the grid or consume it directly; RHEINZINK-PV is a flat-mounted, roof-parallel solar ???



Photovoltaic (PV)-green roofs, a new development integrating the PV system with a green roof, provide additional benefits for renewable electricity production as compared to the green roof. This study provides a systematic review of the published literature in Scopus and Web of Science regarding PV-green roof technologies, to identify the



How Photovoltaic Roof Tiles Work Photic roof tiles, also known as solar roof tiles, are a type of solar panel system that is integrated into the roof of a building. These tiles are designed to look like traditional roof tiles, making them a popular choice for homeowners who want to generate electricity from solar power.



5. System inspection and commissioning Certificate of Completion signed by licenced technician or engineer BPC may inspect the system Final ICA approved For Installations >100 kW BERA inspects and approves the system 4. Consumer installs and certifies RTS system The system is installed by a licenced electrician hired by the consumer 6.



PV system installed on roof of village houses. Note on the regular annual inspection and maintenance for the PV system including its supporting structure: Photovoltaic (PV) systems installed on roofs or roofs of stairhoods of village houses must comply with the specified requirements for green and amenity facilities and must be properly

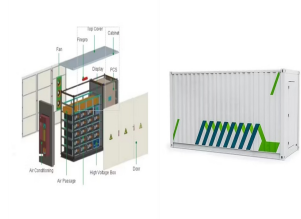


Onyx Solar is a global leader in manufacturing photovoltaic (PV) glass, turning buildings into energy-efficient structures. Our innovative glass serves as a durable architectural element while harnessing sunlight for clean electricity. Crafted with heat-treated safety glass, our photovoltaic

PHOTOVOLTAIC ROOF SYSTEM BOTSWANA

glass provides the same thermal and sound insulation as traditional options, flooding spaces ???

PHOTOVOLTAIC ROOF SYSTEM BOTSWANA



The dawn of renewable energy has brought solar technology to the forefront of sustainable development, with the solar roof mounting system playing a pivotal role in this green revolution. The design and construction of these systems are not just about harnessing the sun's power; they are about doing so efficiently, safely, and in a manner



The solar PV Slate tile, also from GB-Sol, is a photovoltaic unit that visually emulates a row of 3 standard 24" x 12" (600 mm x 300 mm) "Duchess" roofing slates. PV slates are installed using three stainless steel screws through pre-prepared holes along the top edge of the unit and two stainless steel roof hooks at the bottom edge of



There is an urgent demand to promote renewable energy systems in replacing traditional fossil energy systems globally. Solar PV is now the main supplier in the renewable energy market and is expected to The effect of plants on the energy output of green roof photovoltaic systems in tropical climates. Sustainability, 13 (8) (2021), p. 4505.



Among renewable energy generation technologies, photovoltaics has a pivotal role in reaching the EU's decarbonization goals. In particular, building-integrated photovoltaic (BIPV) systems are attracting increasing interest since they are a fundamental element that allows buildings to abate their CO2 emissions while also performing functions typical of traditional ???

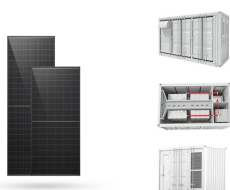


photovoltaic roof system Market Size was estimated at 86.23 (USD Billion) in 2023. The Photovoltaic Roof System Market Industry is expected to grow from 96.18(USD Billion) in 2024 to 230.51 (USD Billion) by 2032.

PHOTOVOLTAIC ROOF SYSTEM BOTSWANA



Solar type roof design refers to the integration of solar panels into the architecture of a building. This design not only maximizes energy efficiency but also enhances the overall aesthetic appeal of a property. Unlike traditional solar panel installations that sit on top of existing roofs, solar type roof designs incorporate solar technology directly into the roofing ???



A flat roof is the ideal place for a solar photovoltaic installation to generate site-sourced electricity. Renewable energy generation has a big role to play in the delivery of a net zero carbon building and integrating renewables allows it to meet a proportion of its own energy needs, minimise carbon emissions, and reduce building running costs.



No elevated system - mounted flat and parallel to the roof; Use inexhaustible solar energy - absorb the sun's rays, generate electricity, feed it into the grid or consume it directly; RHEINZINK-PV is a flat-mounted, roof-parallel solar system. The specially developed seam and module clamp is simply attached to the double standing seams.