

PHOTOVOLTAIC STATION ENERGY STORAGE



What are the energy storage options for photovoltaics? This review paper sets out the range of energy storage options for photovoltaics including both electrical and thermal energy storage systems. The integration of PV and energy storage in smart buildings and outlines the role of energy storage for PV in the context of future energy storage options.



Can energy storage systems reduce the cost and optimisation of photovoltaics? The cost and optimisation of PV can be reduced with the integration of load management and energy storage systems. This review paper sets out the range of energy storage options for photovoltaics including both electrical and thermal energy storage systems.



Can photovoltaic-energy storage-integrated charging stations improve green and low-carbon energy supply systems? In this study, an evaluation framework for retrofitting traditional electric vehicle charging stations (EVCSs) into photovoltaic-energy storage-integrated charging stations (PV-ES-I CSs) to improve green and low-carbon energy supply systems is proposed.



Should a photovoltaic system use a NaS battery storage system? Toledo et al. (2010) found that a photovoltaic system with a NaS battery storage system enables economically viable connection to the energy grid. Having an extended life cycle NaS batteries have high efficiency in relation to other batteries, thus requiring a smaller space for installation.



How can a photovoltaic system be integrated into a network? For photovoltaic (PV) systems to become fully integrated into networks, efficient and cost-effective energy storage systems must be utilized together with intelligent demand side management.

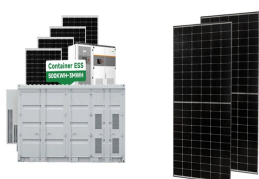
PHOTOVOLTAIC STATION ENERGY STORAGE



What is a photovoltaic/thermal (pv/T) system? A photovoltaic/thermal (PV/T) system converts solar radiation into electrical and thermal energy. The incorporation of thermal collectors with PV technology can increase the overall efficiency of a PV system as thermal energy is produced as a by-product of the production of electrical energy.



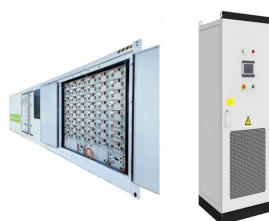
The coupled photovoltaic-energy storage-charging station (PV-ES-CS) is an important approach of promoting the transition from fossil energy consumption to low-carbon energy use. However, the integrated charging station is underdeveloped. One of the key reasons for this is that there lacks the evaluation of its economic and environmental benefits.



This paper proposes a method of energy storage configuration based on the characteristics of the battery. Firstly, the reliability measurement index of the output power and capacity of the PV a?|



On March 31, the second phase of the 100 MW/200 MWh energy storage station, a supporting project of the Ningxia Power's East NingxiaComposite Photovoltaic Base Project under CHN Energy, was successfully connected to the grid. This marks the completion and operation of the largest grid-forming energy storage station in China.



As the utilization of renewable energy sources continues to expand, energy storage systems assume a crucial role in enabling the effective integration and utilization of renewable energy. This underscores their fundamental significance in mitigating the inherent intermittency and variability associated with renewable energy sources. This study focuses on a?|

PHOTOVOLTAIC STATION ENERGY STORAGE



With the application of energy storage systems in photovoltaic power generation, the selection and optimal capacity configuration of energy storage batteries at photovoltaic-energy storage stations (PESS) are becoming more and more important. Aiming at the overall economics of the PESS in the scenario of tracking the planning output, a capacity a?|



space for installing PV panels. Detailed assessments were conducted using tools such as PVGIS or NREL's PV Watts to estimate the solar energy potential at each site. This step ensured that the selected locations would maximize solar energy generation and support the efficient operation of the charging station. 3.3 PV System Design and Sizing



The development of photovoltaic (PV) technology has led to an increasing share of photovoltaic power stations in the grid. But, due to the nature of photovoltaic technology, it is necessary to use energy storage equipment for better function. Thus, an energy storage configuration plan becomes very important. This paper proposes a method of energy storage configuration based a?|

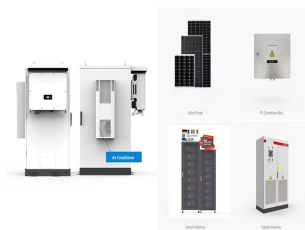


Photovoltaic charging stations are usually equipped with energy storage equipment to realize energy storage and regulation, improve photovoltaic consumption rate, and obtain economic profits through "low storage and high power generation" [3]. There have been some research results in the scheduling strategy of the energy storage system of



Solar energy is becoming widely accepted as a competitive energy source of supplementing the grid due to the ongoing decline in photovoltaic (PV) module prices . Ahmed, M.R. A comprehensive review on system architecture and international standards for electric vehicle charging stations. J. Energy Storage 2021, 42, 103099.

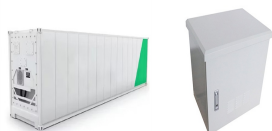
PHOTOVOLTAIC STATION ENERGY STORAGE



3 . Photovoltaic power is a rapidly growing component of the renewable energy sector. Photovoltaic power stations (PVPs) on coastal tidal flats offer benefits, but the lack of information on the effects of PVPs on benthic ecosystems and sediment carbon storage can hamper the development of eco-friendly renewable energy. We sampled the macrobenthos and sediment a?]



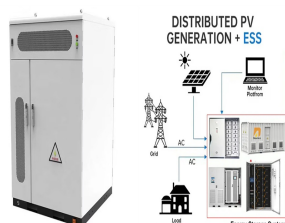
The Photovoltaica??energy storage Charging Station (PV-ES CS) combines the construction of photovoltaic (PV) power generation, battery energy storage system (BESS) and charging stations. This new type of charging station further improves the utilization ratio of the new energy system, such as PV, and restrains the randomness and uncertainty of



A coupled PV-energy storage-charging station (PV-ES-CS) is an efficient use form of local DC energy sources that can provide significant power restoration during recovery periods. However, over investment will a?]



This paper explores the performance dynamics of a solar-integrated charging system. It outlines a simulation study on harnessing solar energy as the primary Direct Current (DC) EV charging source. The approach incorporates an Energy Storage System (ESS) to address solar intermittencies and mitigate photovoltaic (PV) mismatch losses.



The energy storage system (ESS) is also applicable to be connected at the DC bus for the energy storage purposes of solar energy. EV with solar power charging stations: Solar energy standard limitations, required maintenance and ESS, highly dependent on solar: Sinovoltaics: Hong Kong and Shanghai, China:

PHOTOVOLTAIC STATION ENERGY STORAGE



In this paper, we propose a dynamic energy management system (EMS) for a solar-and-energy storage-integrated charging station, taking into consideration EV charging demand, solar power generation, status of energy storage system (ESS), contract capacity, and the electricity price of EV charging in real-time to optimize economic efficiency



When selecting the site of photovoltaic + energy storage power station, try to choose the area with long light time and strong radiation. 3. According to the simulation results, after the third year of operation of the system, the profit can be realized, and it can be calculated that 1121310.388 tons of CO2 emissions can be saved during the



A Grid-Connected PV Array and Battery Energy Storage Interfaced EV Charging Station IEEE Transactions on Transportation Electrification (Jan. 2023), 10.1109/TTE.2023.3234994 Google Scholar



What is photovoltaic (PV) technology and how does it work? PV materials and devices convert sunlight into electrical energy. A single PV device is known as a cell. An individual PV cell is usually small, typically producing about 1 or 2 watts of power. These cells are made of different semiconductor materials and are often less than the thickness of four human hairs.



The battery energy storage station (BESS) is the current and typical means of smoothing wind- or solar-power generation fluctuations. Such BESS-based hybrid power systems require a suitable control strategy that can effectively regulate power output levels and battery state of charge (SOC). This paper presents the results of a wind/photovoltaic (PV)/BESS a?|

PHOTOVOLTAIC STATION ENERGY STORAGE



Abstract: The optimal configuration of energy storage capacity is an important issue for large scale solar systems. a strategy for optimal allocation of energy storage is proposed in this a?]



1 . Industrial and commercial energy storage is a collection of energy storage and supply as one of the equipment. With the rapid development of renewable energy, the demand for electric energy in the industrial and commercial fields is gradually increasing. However, the instability of renewable energy sources such as solar and wind makes their power supply



For instance, solar energy storage can deliver power during periods of peak demand, when electricity prices are generally higher, and help reduce reliance on fossil fuel-based power stations. Furthermore, solar energy storage can also serve as a backup power source during grid outages or emergencies, increasing overall grid resilience and



When a photovoltaic energy storage power station is under coordinated control, the photovoltaic energy storage power station shall be set for a fixed period of time in order to ensure the safety of the photovoltaic energy storage power station being connected to the power grid (Wang et al., 2021). We take the maximum output of photovoltaic



Some review papers relating to EES technologies have been published focusing on parametric analyses and application studies. For example, Lai et al. gave an overview of applicable battery energy storage (BES) technologies for PV systems, including the Redox flow battery, Sodium-sulphur battery, Nickel-cadmium battery, Lead-acid battery, and Lithium-ion a?]

PHOTOVOLTAIC STATION ENERGY STORAGE



In recent years, many scholars have carried out extensive research on user side energy storage configuration and operation strategy. In [6] and [7], the value of energy storage system is analyzed in three aspects: low storage and high generation arbitrage, reducing transmission congestion and delaying power grid capacity expansion [8], the economic a?|



Electric vehicles (EVs) play a major role in the energy system because they are clean and environmentally friendly and can use excess electricity from renewable sources. In order to meet the growing charging demand for EVs and overcome its negative impact on the power grid, new EV charging stations integrating photovoltaic (PV) and energy storage a?|



The Photovoltaic-energy storage-integrated Charging Station (PV-ES-I CS) is a facility that integrates PV power generation, battery storage, and EV charging capabilities (as shown in Fig. 1A). By installing solar panels, solar energy is converted into electricity and stored in batteries, which is then used to charge EVs when needed.



Patel 4 has stated that the intermittent nature of the PV output power makes it weather-dependent. In a fast-charging station powered by renewable energy, the battery storage is therefore paired



a?c Based on PV and stationary storage energy a?c Stationary storage charged only by PV a?c Stationary storage of optimized size a?c Stationary storage power limited at 7 kW (for both fast and slow charging mode) a?c EV battery filling up to 6 kWh on average, especially during the less sunny periods a?c User acceptance for long and slow charging

PHOTOVOLTAIC STATION ENERGY STORAGE



Photovoltaic power generation is the main power source of the microgrid, and multiple 5G base station microgrids are aggregated to share energy and promote the local digestion of photovoltaics [18]. An intelligent information- energy management system is installed in each 5G base station micro network to manage the operating status of the macro and micro a?|