

PHOTOVOLTAIC SUPPORT FAILURE



What happens if a photovoltaic system fails? Finally, challenges and suggestions are put forward for future research. If a failure in the components of a photovoltaic (PV) system, such as PV module, controller, inverter, load, cable, etc. goes undetected and uncorrected, it can seriously affect the efficiency, safety, and reliability of the entire PV power plant.



What causes a solar PV system to fail? Back and front contact layers failure, failures of semiconductor layers, encapsulant failure. Faults related to string and central inverter. Errors in PV modules, cables, batteries, inverters, switching devices and protection devices are considered. The failure of the components affects the reliability of solar PV systems.



Does failure affect the reliability of solar PV systems? The failure of the components affects the reliability of solar PV systems. The published research on the FMEA of PV systems focuses on limited PV module faults, line-line contact faults, string faults, inverter faults, etc. The literature shows that the reliability analysis method is used to evaluate different faults in PV systems.



What is the literature review of solar PV module failure modes? This literature review section gives the details about the faults considered in literature and data source used by researchers in their presented work. A thorough study on the solar PV module failure modes, associated fire risks, and failure detection methods in PV modules has been reported by Akram et al., .



What are the most common PV modules failures? The most common PV modules are made of wafer-based silicon solar cells. Therefore a large knowledge base has been accumulated for the most PV module failures of this type. However even for this type of PV modules some effects like potential induced degradation and snail tracks have been studied in detail in the last 3 years for the first time.

PHOTOVOLTAIC SUPPORT FAILURE



What happens if a PV module fails? The hotspot failure mechanism is considered the most severe failure and leads to catastrophic consequences. It deteriorates all PV module components if undetected, and a PV module affected by an elevated level of hotspots cannot reverse the degradation and often requires replacement.



Flexible photovoltaic (PV) modules support structures are extremely prone to wind-induced vibrations due to its low frequency and small mass. Wind-induced response and critical wind velocity of a 33-m-span flexible PV modules support structure was investigated by using wind tunnel tests based on elastic test model, and the effectiveness of three types of a?)



The results show that: (1) according to the general requirements of 4 rows and 5 columns fixed photovoltaic support, the typical permanent load of the PV support is 4679.4 N, the wind load being 1



With the global increase in the deployment of photovoltaic (PV) modules in recent years, the need to explore and understand their reported failure mechanisms has become crucial. Despite PV modules being considered reliable devices, failures and extreme degradations often occur. Some degradations and failures within the normal range may be minor and not cause a?)



methods are linked to the PV module failures which are able to be found with these methods. In the second part, the most common failures of PV modules are described in detail. In particular these failures are: delamination, back sheet adhesion loss, junction box failure, frame a?)

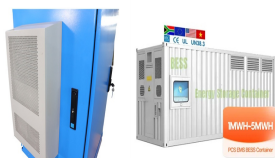
PHOTOVOLTAIC SUPPORT FAILURE



With the Carbon Peaking and Carbon Neutrality Strategy proposed by China and the continuous promotion of the new energy revolution, PV power generation, as a new type of clean energy using solar energy, has become an important way for China to promote energy transformation. Flexible photovoltaic (PV) support [1] is a flexible support system composed of a?



Reported failure rates of photovoltaic modules fall mostly in the range of other consumer products; however, the long expected useful life of modules may not allow for direct comparison. In general, degradation a?



a?c PIDs dominates year 3 and 4 in the failure statistic (16%/a) in moderate climate. a?c Great variation of degradation rates for bypass diode failure, may cause dramatic power loss. a?c In all climates a?



The tracking photovoltaic support system (Fig. 1) is mainly composed of an axis bar, PV support purlins, pillars (including one driving pillar in the middle and nine other non-driving pillars), sliding bearings and a driving device. The axis bar is composed of 11 shaft rods. Photovoltaic panels are installed on the photovoltaic support purlins.



Download Citation | On Nov 1, 2023, Wenjie Li and others published Instability mechanism and failure criteria of large-span flexible PV support arrays under severe wind | Find, read and cite all

PHOTOVOLTAIC SUPPORT FAILURE



1 Introduction. The current challenge is faced by the PV industry to make the cost-efficient PV generation. The generation can be improved by finding out the causes that occurs during the outdoor exposure of PV systems/modules; therefore, the reliability of PV modules for a longer period is essential [1]. To evaluate the reliability of modules in an outdoor a?)



It also explains the effect of PV module failure on PV system considering Return on Investment (ROI). Singh and Chander [6] presents the mid-life degradation of solar PV plant of 100 KWp grid connected having 11 years in operation. Visual inspection is used to identify the degradation in PV modules and currenta??voltage characteristics is used to evaluate the a?)



(1) Background: As environmental issues gain more attention, switching from conventional energy has become a recurring theme. This has led to the widespread development of photovoltaic (PV) power generation systems. PV supports, which support PV power generation systems, are extremely vulnerable to wind loads. For sustainable development, corresponding a?)



PV modules. Thin-film PV modules are also covered, but due to the small market share of these types of PV modules reliable data is often missing. The author team also focuses on types of PV module failures which are not specific for one special manufacturer and have a broader relevance.



Photovoltaic (PV) arrays are prone to various faults due to the hostile working environment. This paper presents the fault diagnosis algorithm based on support vector machine (SVM) to detect short

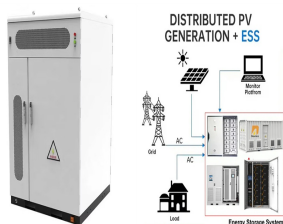
PHOTOVOLTAIC SUPPORT FAILURE



The prototype structure of the flexible PV support adopted in this study is shown in Fig.1. The height of the columns is 6 m. The span of the flexible PV support is 33 m, which is consisted of 28 PV modules. The inclination angle of the PV modules in the north-south direction is 15°, and



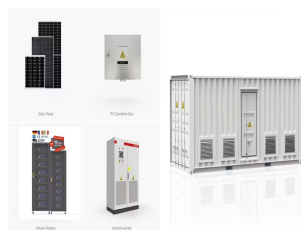
Solar photovoltaic (PV) systems are becoming increasingly popular because they offer a sustainable and cost-effective solution for generating electricity. PV panels are the most critical components of PV systems as they convert solar energy into electric energy. Therefore, analyzing their reliability, risk, safety, and degradation is crucial to ensuring a



To address the nonlinear problem in fault diagnosis and improve the single support vector machine, a fault diagnosis method based on the multi-class classification method of one-against-one (OAO) algorithm is proposed. Efficient condition monitoring and fault diagnosis is an essential task to ensure the generation performance and reliability of photovoltaic (PV) a



The new CSPS, with a 10% lower cost compared with traditional i!x-tilted PV support, is a better alternative to traditional photovoltaic (PV) support systems. In this study, the failure models



1.3 Global Energy Transformation: The role 15 of solar PV 2 THE EVOLUTION AND FUTURE OF SOLAR PV MARKETS 19 2.1 Evolution of the solar PV industry 19 2.2 Solar PV outlook to 2050 21 3 TECHNOLOGICAL SOLUTIONS AND INNOVATIONS TO INTEGRATE RISING SHARES

PHOTOVOLTAIC SUPPORT FAILURE



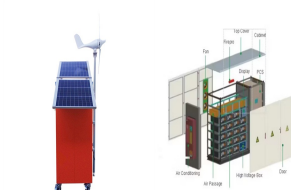
Abstract: If a failure in the components of a photovoltaic (PV) system, such as PV module, controller, inverter, load, cable, etc. goes undetected and uncorrected, it can seriously affect a?



PV Failure Monitoring S 2021 Report IEA-PVPS T13-19:2021 Task 13 Performance, Operation and Reliability of Photovoltaic Systems Task 13 aims to provide support to market actors working to improve the operation, the reliability and the quality of PV components and systems. Operational data from PV systems in different climate zones compiled



A series of experimental studies on various PV support structures was conducted. Zhu et al. [1], [2] used two-way FSI computational fluid dynamics (CFD) simulation to test the influence of cable pre-tension on the wind-induced vibration of PV systems supported by flexible cables, which provided valuable insights for improving the overall stability and efficiency of PV systems a?



This paper develops a failure mode and effects analysis (FMEA) methodology to assess the reliability of and risk associated with polycrystalline PV panels. Generalized severity, occurrence, and detection rating criteria are a?



Download Citation | Correction to: Failure Diagnosis Method of Photovoltaic Generator Using Support Vector Machine | The authors would like to correct the article as follows. | Find, read and cite

PHOTOVOLTAIC SUPPORT FAILURE



Accurate photovoltaic (PV) diagnosis is of paramount importance for reducing investment risk and increasing the bankability of the PV technology. The application of fault diagnostic solutions and troubleshooting on operating a?



IEA INTERNATIONAL ENERGY AGENCY PHOTOVOLTAIC POWER SYSTEMS PROGRAMME Statistics of Photovoltaic Module Failure M. Kontges¹, A. Morlier¹, U. Jahn², K. A. Berger³ ¹Institut für Solarenergieforschung Hamelin ²TUV Rheinland Energy GmbH ³Austrian Institute of Technology GmbH Quality and sustainability as an asset for European Industry, Brussels 3rd a?



The tracking photovoltaic support system (Fig. 1) is mainly composed of an axis bar, PV support purlins, pillars (including one driving pillar in the middle and nine other non-driving pillars), sliding bearings and a driving device. The axis bar is composed of 11 shaft rods. Failure investigation of a solar tracker due to wind-induced



In recent years, the advancement of photovoltaic power generation technology has led to a surge in the construction of photovoltaic power stations in desert gravel areas. However, traditional equal cross-section photovoltaic bracket pile foundations require improvements to adapt to the unique challenges of these environments. This paper introduces a?



Compared with independent flexible PV support, the entire structure force performance and transfer mechanism of inter-row cables and inter-span rods of flexible PV support arrays are more complex, it is easy to have large vibration or even instability failure under strong wind. In this study, the three-span and five-row flexible PV support array of a 66 MW Fishery-PV a?

PHOTOVOLTAIC SUPPORT FAILURE



With the global increase in the deployment of photovoltaic (PV) modules in recent years, the need to explore and understand their reported failure mechanisms has become crucial. Despite PV modules being considered a?