

# PHOTOVOLTAIC SUPPORT MANUFACTURERS IN GOAF AREAS

---



What is GB-Sol's roof integrated solar PV system? GB-Sol's roof integrated solar PV system enables full-sized, high efficiency solar panels to be discreetly fitted within any type of conventional roofing material. Our Projects team manage complex solar PV projects such as large commercial buildings, industrial environments and social housing retrofit programmes.



Can photovoltaic panels be mounted on a galvanized roof? Photovoltaic system with panel mounting on the roof of a galvanized structure. Photovoltaic panels are rarely mounted on the roof to allow the entry of sunlight and rain. The structure has no walls and can have openings up to 15 meters without intermediate pillars. This system is designed for agricultural and keeping animals in free outdoor areas.



What is a PV slate roof? Upgrade your roof with PV Slate and experience the seamless blend of traditional slate aesthetics and powerful solar energy all backed by a 25-year warranty. The Infinity solar roof is an almost seamless glass and aluminium roof covering from ridge to gutter and side to side, with huge solar power output and a 25 year warranty.



How many photovoltaic panels can be installed? Photovoltaic panels can be configured in a portrait or landscape panel section of up to 6 landscape panels. Carport type photovoltaic parking systems structure. Intended for the production of electricity using photovoltaic panels. energy use for the house or nearby premises. Photovoltaic system with installation of vertical type bifacial panels.



What are photovoltaic structures? Photovoltaic structures represent the supports for photovoltaic panels. These photovoltaic panels can be with an aluminum frame with a thickness of between 30 mm and 45 mm, or photovoltaic panels with double glass without frames. Below are our structure systems available for ground-mounted power plants:

# PHOTOVOLTAIC SUPPORT MANUFACTURERS IN GOAF AREAS



Who is Hafod renewables? At Hafod Renewables, we provide a seamless, hassle-free solution, handling every aspect from installation to grid connection. More Info "We are happy to give Hafod the highest rating because of their diligence. They were very clear about when they said they would carry out the works."



Early coal mining and management methods left a large number of unknown goafs in China's important Ordos Basin, which has restricted the safe production in today's large-scale mines. The transient electromagnetic (TEM) method is the main geophysical tool used to detect the goaf. We considered the geological conditions of Ordos Basin in studying the ???



The space without support after mining is called goaf, and there are mainly five treatment methods: (1) Collapse method. The key is that the rock conditions are good enough, the pillar left is appropriate, and the area of continuous goaf is not too large. (5) Joint treatment method. Two or more methods are used to deal with goaf at the same



Accurately assessing the photovoltaic (PV) power generation potential in coal mining subsiding regions is of great significance for the transformation of a resource-based city and the goal of



Coal mining goaf is unconsolidated material formed by collapse of overlying strata. Water in goaf can flow into and contaminate surface water systems. An integrated geophysical investigation approach combining microseismic monitoring (MSM) and the opposing-coils transient electromagnetic (OCTEM) method was used to evaluate the effectiveness of ???

# PHOTOVOLTAIC SUPPORT MANUFACTURERS IN GOAF AREAS



The purpose of this study is to simulate the void distribution of goaf under building load through similar simulation experiment, and make theoretical analysis according to the void distribution of goaf after mining, build a zoned plane model of goaf, analyze the instability mechanism of different regions of goaf, and then provide theoretical support for grouting ???



After the extraction and advance of the support equipment, the mined area is called "goaf", where the above strata are allowed to collapse. To obtain a better understanding of the variation of gas compositions in the goaf area, TG goafhole locations corresponding to three longwall production stages, i.e. the start-up stage (TG1???16 in



Photovoltaic support Supplier, Solar Bracket, Wire Rope Manufacturers/ Suppliers - Taizhou Suneast New Energy Technology Co., Ltd. Sign In. Join Free For Buyer. Search Products & Suppliers Product Directory To become the best photovoltaic support supplier and to create the greatest value for customers is the goal of Dongsheng Photovoltaic



Improper exploitation and massive coal mines closures without proper solutions bring about the extensive occurrence of goaf water in China where over 3,500 coal mines have been shut down in the



<p>During the excavation of 39102 auxiliary transportation gateway of China Coal Energy Huayu Yuanbaowan Coal Industry Co., Ltd., the old empty area is connected with the old lane of the original No.2 well, which caused potential safety hazards to the safety production of 39102 working face. In order to ensure the safety production of the working face, ???

# PHOTOVOLTAIC SUPPORT MANUFACTURERS IN GOAF AREAS



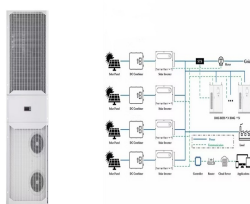
To attain precise forecasts of surface displacements and deformations in goaf areas (a void or cavity that remains underground after the extraction of mineral resources) following coal extraction, this study based on ???



The coal goaf areas are the main cause of accidents involving water intrusion in coal mines. The ground collapse caused by water intrusion in goaf areas pose major threats to further coal mining.



The accumulated methane in goaf during coal mining may leak into the working face under the airflow influence, which is possibly causing disasters such as methane gas excessive at the working face and seriously threatening the mine safety. This paper first established a three-dimensional numerical model of the mining area under U-shaped ???



QIERJIE is one of the most professional photovoltaic support manufacturers and suppliers in China, featured by quality products and good service. It has a simple solar structure with a fixed tilt angle, and is suitable for low-latitude areas. Adjustable structures: Including manually adjustable and electric intelligent adjustment brackets



The goaf is a mining term which refers to the part of the mine from which the mineral has been partially or completely removed . Understanding the goaf-hole shearing process is vital in designing and operating an efficient goaf-gas drainage system, especially as goaf-hole failure is one of the critical problems in many gassy mine sites.

# PHOTOVOLTAIC SUPPORT MANUFACTURERS IN GOAF AREAS



Goaf fires are serious hazards in coal mines, especially in the closely spaced shallow coal seams of northwestern China, where spontaneous combustion of coal occurs frequently. A numerical simulation method was developed for a large-area spontaneous combustion fire in the goaf of the 12306 fully caved face at Bulianta coal mine in the ???



K2 Systems clips allow for expansion and shrinkage of photovoltaic panels that in 95% proportion have aluminum frames that expands to heat 1 mm / meter. If the panels are fixed by other methods, they do not allow the expansion and thus the joints of the photovoltaic panels are forced, which translates into cracks at the sealing elements, the panels starting to self-destruct ???



, we have helped thousands of customers across the UK & Ireland switch to become energy independent & benefit financially via our cutting-edge product lines, installation ???



The coal goaf areas are the main cause of accidents involving water intrusion in coal mines. The ground collapse caused by water intrusion in goaf areas poses major threats to further coal mining as the conventional ground-based transient electromagnetic method is difficult to perform due to the hilly terrain in the Loess Plateau.



During the advancement of the working face, the position of the broken coal in a goaf may differ, so the areas prone to spontaneous combustion of coal may also vary [11, 12]. However, judging from

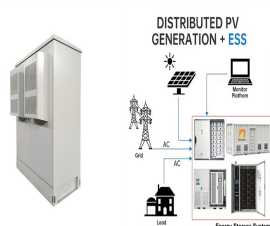
# PHOTOVOLTAIC SUPPORT MANUFACTURERS IN GOAF AREAS



Environmental impact of acidic goaf water in karst areas is established by taking Jinci spring area for example. Several surface and karst waters, geographically located close to coal mine areas, are proved to be affected by the goaf waters with hydrogeochemical characteristics of high total dissolved solids and SO<sub>4</sub><sup>2-</sup>



In order to further verify the position and shape of goaf obtained by the comprehensive geophysical prospecting method, the borehole television method is used to observe the possible goaf in exploration areas A and B. FB580 four-picture borehole television is used for borehole television observation. The borehole television has a high



The goaf area's concentration of oxygen exhibits an "S" shape distribution pattern. The overall temperature change range within the high-temperature zone of the goaf is 4.5 K, gradually migrating toward the deeper areas. As the air supply rate rises, oxidation zone area gradually decreases, exhibiting an overall sinusoidal distribution.



Computational fluid dynamics (CFD) models have been developed based upon field data collected from a longwall mine in New South Wales, Australia to study the behaviour of goaf gas flow in both



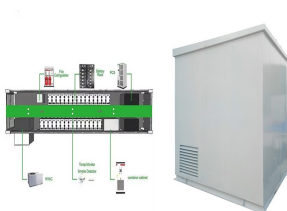
Solar Steel are manufacturers of steel modular ballasted support systems for commercial PV and Thermal collector project installations. We supply support systems for Landscape and Portrait ???



# PHOTOVOLTAIC SUPPORT MANUFACTURERS IN GOAF AREAS



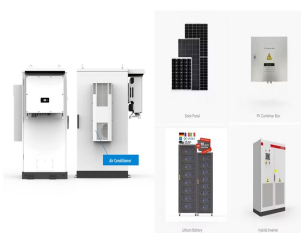
In recent years, a large number of goaves in China have caused many engineering accidents and ecological security accidents, because of the continuous exploitation of mine resources. The goaf treatment is a highly complex project because varied types of mine goaf result in various safety problems. To settle the engineering problems caused by mine goaf in ???



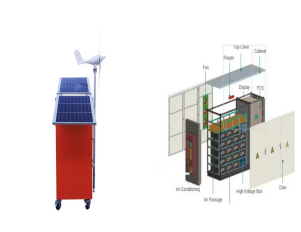
Zuo, Q., et al.: Distribution Law for the Danger Area for Spontaneous Coal 3232 THERMAL SCIENCE: Year 2021, Vol. 25, No. 5A, pp. 3229-3237  
The positive direction of the goaf is the x-axis is along the forward direction of the open cut, and the y-axis is the width of the mining face. Figure 1 presents the process of goaf creation



Discharge of goaf water poses severe environmental impact, especially in fragile karst areas. Based on the extensively literatures reading, field investigation combined with hydrogeochemical and isotopic (?? 34 S) analysis, this paper reviewed the distribution, characteristics and formation of coal mine goaf water in karst areas in China. The



Range of products for undertaking photovoltaic installations on roofs. Solutions designed to guarantee a quick, efficient and reliable installation. We have different systems with their ???



The large-scale extraction of coal resources in the western mining areas of China has resulted in a significant loss of water resources, which is a challenge for coordinating resource extraction with ecological preservation in the mining areas. Although underground reservoir technology can effectively solve this problem, measuring the storage capacity of ???