

PHOTOVOLTAIC SUPPORT MATERIAL

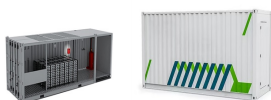
COLUMN SPECIFICATIONS



What are the dynamic characteristics of photovoltaic support systems? Key findings are as follows. Dynamic characteristics of tracking photovoltaic support systems obtained through field modal testing at various inclinations, revealing three torsional modes within the 2.9???5.0 Hz frequency range, accompanied by relatively small modal damping ratios ranging from 1.07 % to 2.99 %.



How many pillars does a photovoltaic support system have? The tracking photovoltaic support system consisted of 10 pillars(including 1 drive pillar),one axis bar,11 shaft rods,52 photovoltaic panels,54 photovoltaic support purlins,driving devices and 9 sliding bearings,and also includes the connection between the frame and its axis bar. Total length was 60.49 m,as shown in Fig. 8.



What is the design angle of a fixed photovoltaic module? The software SAP2000 has strong functions,design of the fixed photovoltaic support. Japan. The deg ee of the design angle of PV modules was x991 mmx40mm. The single photovoltaic array unit was arranged into 4 row s and 5 column s. According to the basic parameters were shown in table 1.



How stiff is a tracking photovoltaic support system? Because the support structure of the tracking photovoltaic support system has a long extension length and the components are D-shaped hollow steel pipes,the overall stiffness of the structure was found to be low,and the first three natural frequencies were between 2.934 and 4.921.



What are the dynamic characteristics of the tracking photovoltaic support system? Through processing and analyzing the measured modal data of the tracking photovoltaic support system with Donghua software,the dynamic characteristic parameters of the tracking photovoltaic support system could be obtained,including frequencies,vibration modes and damping ratio.

PHOTOVOLTAIC SUPPORT MATERIAL

COLUMN SPECIFICATIONS



Are ground mounting steel frames suitable for PV solar power plant projects? In the photovoltaic (PV) solar power plant projects, PV solar panel (SP) support structure is one of the main elements and limited numerical studies exist on PVSP ground mounting steel frames to be a research gap that has not be addressed adequately in the literature.



Our rotating solar panel brackets have EFT series, while fixed solar panel brackets have single column EFS series and double columns EFD series. What are the standard requirements for photovoltaic support materials 02 / 25. News What industry does PV support production belong to? What equipment is required for the production of PV support?



Photovoltaic bracket is mainly divided into single column and two kinds, two columns, and wherein the support strength of two column photovoltaic brackets is stronger, multiplex in the photovoltaic array of large-scale layout in blocks, and single column support is multiplex on small-sized, scattered photovoltaic module. Yet in actual use, a lot of occasions are often due to the ???



One of the most important ways to combat climate change and the global energy issue is by promoting the use of solar energy. About 80% of the energy required to heat indoor spaces and water can be replaced by solar power, which can significantly reduce climate change 1. The design and size of solar structure components have grown more important as ???



virtually any PV module mounting challenge. It's also a system of technical support: complete installation and code compliance documentation, an on-line SolarMount Estimator, person-to-person customer service, and design assistance to help you solve the toughest challenges. Which is why SolarMount is PV's most widely used mounting system.

PHOTOVOLTAIC SUPPORT MATERIAL

COLUMN SPECIFICATIONS



Using steel to build the support structures makes it even more sustainable as steel is a durable and 100% recyclable material. ArcelorMittal supports the move to clean energy generation by offering high-performance steels, advanced metallic coatings, and structural solutions for PV and solar thermal installations. We also offer tailor-



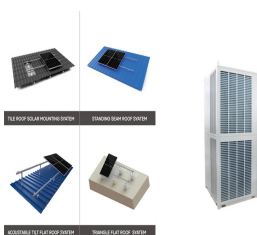
The module support (array mounting) structure shall hold the PV module(s). Module Support Structure. The module(s) shall be mounted either on the rooftop of the house or on a metal pole that can be fixed to the wall of the house or separately in the ground, with the module(s) at least 3 (4) meters off the ground. Roof-mounting



In the realm of solar energy installations, the ability to accurately decipher and understand solar mounting system's datasheet is a skill of paramount importance. A datasheet is a comprehensive document that ???



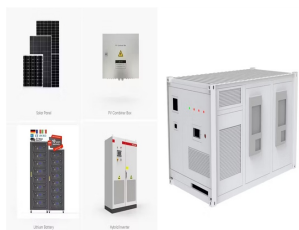
The RERH specifications and checklists take a builder and a project design team through the steps of assessing a home's solar resource potential and defining the minimum structural and system components needed to support a solar energy system. The following document also provides recommendations on



One of the key aspects addressed in a solar structural engineer report is the analysis of the solar infrastructure, which encompasses the solar panels, supporting structures, and connections to the electrical grid. These reports ensure that the projects adhere to local building codes and safety regulations, while also considering environmental factors, such as ???

PHOTOVOLTAIC SUPPORT MATERIAL

COLUMN SPECIFICATIONS



Photovoltaic support column Stability and durability: The PV support column is made of high-strength materials, such as high-quality steel, with excellent load-bearing capacity and stability. Home. About Us. Company Profile. Culture. Honor. ???



Columns to cross-sections St?tzen zu Querschnitten 60x40x1,2mm 60x60x1,5mm D??ugo???? / Length / L?nge 2 mb 2,2 mb 2,3 mb Mo? 1/4 liwo???? zam?wienia wraz z materia??em na grodzienie terenu s??upki + siatka Possibility of ordering together with the material for fencing the field s??upki + mesh M?glichkeit der Bestellung zusammen mit dem Material



Guardrail Square Column Standard GB/T Highway Guardrail the solar photovoltaic support systems commonly used in my country are divided into three types in terms of materials, mainly concrete supports, steel supports and aluminum alloy supports. Specification. Thickness. Material. Anticorrosion. C60. 2.0-2.5. Q235B-Q355B. Hot dip



Solar Panel Mounting Structures: The Unsung Pillars of Solar Energy. Solar panel mounting structures serve as the foundational pillars that support and stabilize solar energy systems. These structures are meticulously designed and engineered to ensure that solar panels are securely anchored, providing a stable platform for energy generation.



The use of ribs, U-shaped, square-shaped, trapezoidal side plates, and two different bolt layouts (2 x 2 and 1 x 2) were included in the designs of the support plinths. Column???base assemblies were tested and numerically simulated, which included a parametric analysis based on a detailed finite element analysis to investigate the failure

PHOTOVOLTAIC SUPPORT MATERIAL

COLUMN SPECIFICATIONS



DOI: 10.1016/j.oceaneng.2024.118908 Corpus ID: 271780266;
Experimental and numerical study on dynamic response of a photovoltaic support structural platform with a U-shaped tuned liquid column damper



Material: High-strength aluminum 6005-T5, stainless steel SUS304.
Warranty: 10 years. The Single-column carbon steel ground PV system features a sleek, single-post design made from durable carbon steel, providing robust support for solar panels while offering minimal wind resistance and easy installation in various ground conditions.



7. Weight of the PV plant 8. Batteries and inverter 3.2. SELECTION OF THE SOLAR PANELS AND SOLAR TUBE: With the estimated amount of the output wattage polycrystalline silicon has been selected based on the given dimensions below. 3.2.1 Selection of solar panel (polycrystalline silicon type) Fig.3. Polycrystalline SI type solar panel



Tianjin Zhong"An New Energy Technology Co., Ltd. is a young and energetic company, we have our own production base in Tianjin, we have worked in the industry of steel structure for many years, and keep up with the changing ???



Material of solar photovoltaic bracket. Among them, the section steel is produced in factory with uniform specification, stable performance, excellent corrosion resistance and beautiful appearance. Column solar ???

PHOTOVOLTAIC SUPPORT MATERIAL

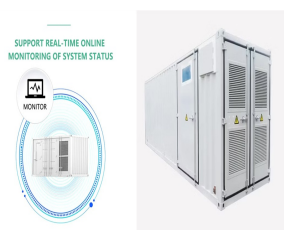
COLUMN SPECIFICATIONS



Industrial Standard (JIS C 8955-2011), describing the system of fixed photovoltaic support structure design and calculation method and process. The results show that: (1) according to ???



With the rapid development of the photovoltaic industry, flexible photovoltaic supports are increasingly widely used. Parameters such as the deflection, span, and cross-sectional dimensions of cables are important factors affecting their mechanical and economic performance. Therefore, in order to reduce steel consumption and cost and improve ???



experience, and overall material optimization that Schletter puts behind its products everyday. Built to install quickly and affordably, the FS System is ideally suited for mid to large-scale photovoltaic installations using any kind of module on the market. Each post that makes up the FS System is hot-dipped galvanized



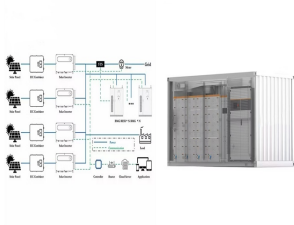
PV panels mounted on roof Workers install residential rooftop solar panels. The solar array of a PV system can be mounted on rooftops, generally with a few inches gap and parallel to the surface of the roof. If the rooftop is horizontal, the array is mounted with each panel aligned at an angle. If the panels are planned to be mounted before the construction of the roof, the roof can ???



Details: A solar single-column support system is a structure used in solar photovoltaic (PV) installations. It typically consists of a single vertical column or post that supports the solar panels, offering advantages in installation, maintenance, and land use. The primary features and benefits include: Features: - Single Vertical Column: A single vertical column supports the system

PHOTOVOLTAIC SUPPORT MATERIAL

COLUMN SPECIFICATIONS



to broaden the application of Solar PV with a specific focus on Solar PV Carports. Parking lots are essential to any commercial or industrial facility, but their use can be extended far beyond a simple space for cars to park. We believe this kind of space should serve a dual function: of energy generation through Solar PV as well as parking.