

# PHOTOVOLTAIC SUPPORT WEATHERING STEEL CHANNEL STEEL



Are ground mounting steel frames suitable for PV solar power plant projects? In the photovoltaic (PV) solar power plant projects, PV solar panel (SP) support structure is one of the main elements and limited numerical studies exist on PVSP ground mounting steel frames to be a research gap that has not be addressed adequately in the literature.



Which steel is best for PV mounting? To do so, it requires a robust supporting structure made from high-quality steel with effective corrosion protection. With ZM Ecoprotect (R) Solar, thyssenkrupp Steel now offering high-performance, zinc-magnesium-coated steels for PV mounting systems ??? durable, robust and sustainable.



Can low cost steel be used for thin film PV? The study analyses the suitability of utilising a range of ???rough??? low cost steels suitable for the deposition of a number of thin film PV technologies such as: a-Si and Organic Photovoltaics (OPV).



Can steel be used as a substrate for PV applications? Studies have assessed the viability of utilising steel as an effective substrate material for PV applications. Ke et al. experimented with steel as a suitable substrate, utilising varying thicknesses for the IL applied to the stainless steel.



Can 'rough' steel be used as a substrate for PV modules? This study analysed the potential for a number of less refined ???rough??? steels as substrates for PV modules.

# PHOTOVOLTAIC SUPPORT WEATHERING STEEL CHANNEL STEEL



Which steel grades are suitable for PV fabrication? By utilising an IL to provide insulation combined with a smooth surface suitable for PV fabrication, the study was able to assess the efficiency and suitability of four less refined and cheaper steel grades: AISI430, DX51D+Z, DX51SD+AS, and DC01, at lab and production scale.



Given these long operating times, high-performance steel substructures are required in particular for the solar modules of photovoltaic ground-mounted systems. With ZM Ecoprotect (R) Solar, thyssenkrupp Steel is now offering a ???



weathering steel bridges must be regularly inspected and evaluated, and appropriate maintenance strategies must be adopted, just as conventional Bridge. According to the characteristics of weathering steel, general inspection, condition assessment and corrosion monitoring of weathering steel bridges are required. 2. General Inspection



Can we apply a clear coat to A606-4/A588 weathering steel? If you choose to clear coat the material, do it after the A606-4/A588 has a good rust/patina set into the steel. If you do it prior to a good rust/patina, then it is very likely your clear coat will take off the rust.



The microstructure and mechanical properties of a traditional Ti-microalloyed weathering steel were analyzed, and the strength was improved by proposing an optimized Ti content. The ???

# PHOTOVOLTAIC SUPPORT WEATHERING STEEL CHANNEL STEEL



As one of the leading astm a588, a242 and a709-50w corten steel plate manufacturers, suppliers and distributors in China, we warmly welcome you to buy bulk astm a588, a242 and a709-50w corten steel plate from our factory. All our products are with high quality and competitive price.



ASTM A588 Weathering Steel (COR-TEN(R) Steel)Central Steel Service Inc. stocks and delivers strong, durable ASTM A588 steel in a variety of shapes and forms. A high-quality, long-lasting product available in angles, channel, and beams, steel plate and bars, Central Steel's ASTM A588 steel helps construct the world's most vital structures while withstanding the earth's most ???



Weathering steel is therefore classed as being a "self-protecting" steel. In normal use the material does not need painting or other external treatment any kind. Weather resistant steel can be used in a wide range of structural applications. It is a commonly used product in bridge construction because of the lack of maintenance costs.



The high strength weathering steel ZJ700 W is mainly used for the production of special 53-foot containers. trucks, all kinds of cranes, scraper conveyors and hydraulic support used in coal mines. High titanium hot rolled welded high strength steel is generally used in the main structure of engineering machinery to withstand the complex and



Company Introduction: The company is a professional manufacturer of steel products, through the ISO9001-2000 certification, strong technical force, advanced production equipment, first-class production technology, perfect quality assurance system. Main products: All kinds of wire mesh, nails, wire, c-shaped steel purlin, Z-shaped steel purlin for steel structure, all kinds of steel ???

# PHOTOVOLTAIC SUPPORT WEATHERING STEEL CHANNEL STEEL



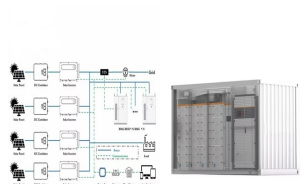
Shandong Zhongao Steel Co., Ltd. is a large steel trading company integrating production, processing and sales. The main products include: Seamless steel pipe, precision steel pipe, die steel, carbon steel plate, alloy steel plate, carbon steel bar, stainless steel, galvanized steel, aluminum profile, copper pipe, copper plate, etc



rust layer, the coat of non-exposed weathering steel is not apt to fall off. Baosteel is the largest supplier of weathering steel in China at present, and is leading in the research and production of weathering steel in China. The weather resistance of Baosteel's FRW steel is presently of the highest grade among the weathering steel.



BlueScope manufactures a range of REDCOR(R) weathering steel for use in many applications from structural, such as bridges, to non-structural applications such as facades, screens, sculptures and noise-wall barriers. REDCOR(R) steel ???



Weathering steel is also known by corten steel. The material contains low alloy properties like Cu, Cr, Ni, which bring atmospheric corrosion resistance. Support & Sales +86 372 2157660 / +86 186 3727 1277. Support & Sales [email Auto-mobile, Bridge buildings, tower building, Photovoltaic power station and high way buildings, where need



Wei BS, Zhang GP, Miao GW, Li YR, Guo H. Analysis of mechanical properties of fixed photovoltaic mounts during support settlement. Solar Energy. 2019(3): 6. Google Scholar [2] Jiang H. Optimizing design solutions to reduce project cost. Engineering Cost Management. 2007(3): 3. Google Scholar [3]

# PHOTOVOLTAIC SUPPORT WEATHERING STEEL CHANNEL STEEL



photovoltaic (PV) solar power plant projects, PV solar panel (SP) support structure is one of the main elements and limited numerical studies exist on PVSP ground mounting steel frames to be a



Steel channels from HAURATON. Steel is a material that, with its many variants and processing options, is also used for tasks in rainwater management. HAURATON has been using steel as a channel material for many decades. This means that we can draw on a wealth of experience. For more than 40 years, HAURATON has been offering steel channel



The panels of high chromium steel (A1010), high-performance steel (HPS 70W) and weathering steel (WS) were exposed to accelerated salt-spray corrosion test for 1 week and to less aggressive test

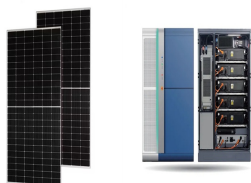


We get a lot of questions about Weathering Steel. The answers to these questions below will help your all round understanding of Weathering Steel and why it's so different from mild steel. This means when you're considering using steel for any edging, retaining walls or features as part of a garden landscape, you will be better informed about what's going ???



A new China PV bracket standard, NB/T 10642-2021, stipulates weathering steel as one of the recommended materials for PV brackets. Even though the amount of nickel in weathering steel is small (around 0.1???0.65%), the total tonnage of nickel can be quite large considering the number of solar panels that will be erected in the coming decades.

# PHOTOVOLTAIC SUPPORT WEATHERING STEEL CHANNEL STEEL



Consequently, thyssenkrupp Steel is developing new coating systems for integrated photovoltaic (PV) installations in agriculture based on ZM Ecoprotect (R) Solar. Great development potential: Agri-PV is about equipping agricultural land with PV ???



Weathering steel is a high strength low alloy steel that was originally developed by United States Steel in the 1930s to resist corrosion and abrasion in their ore wagons. It was given the trade name Cor-ten, and was first used in construction on the John Deere World Headquarters building in Moline, Illinois, which opened in 1964.



Weathering steel, also known as Corten steel, is a unique type of steel alloy that has become popular for its distinctive rust-like appearance and exceptional resistance to corrosion.. This material contains alloying elements like copper, chromium, and nickel, which react with the environment to form a protective oxide layer on its surface when exposed to the elements.



The demand for galvanized steels used for the photovoltaic supports has been increasing significantly with the widely application of photovoltaic equipment. However, the producing progress of galvanized steel has caused serious environment pollution which mainly includes water pollution and soil pollution. Therefore, the alternatives of galvanized steel are sought by ???



We're well-known as one of the leading slotted c channel steel manufacturers and suppliers in China. Please rest assured to wholesale high quality slotted c channel steel at competitive price from our factory. Technology Co.,Ltd, professional manufacturer for solar panel mount or called PV support bracket products, slotted C channel steel



# PHOTOVOLTAIC SUPPORT WEATHERING STEEL CHANNEL STEEL



Central Steel Service, Inc. stocks ASTM A588 and A709-50W corrosion-resistant and high-strength steel channels in various sizes. Contact us to receive a custom quote! Call us today at 800.868.6798 Corrugated Sheets; CorTen ???



Among the building materials used recently for floating photovoltaic power generation structures in Korea, high-durability steel (i.e., PosMac???POSCO magnesium aluminum alloy coating product), aluminum, ???



Due to its excellent corrosion resistance, weathering steel is widely used in railway, vehicles, Bridges and other steel structures exposed to the atmosphere for a long time. Nowadays, weathering steel is gradually applied in the field of photovoltaic. It can be said that the application of weathering steel in the photovoltaic industry is the



The aim of this study is to determine the influence of chloride ions on photovoltaic effect of weathering steel, which were exposed in simulated atmospheric condition under illumination for 3 days. which may act as transmission channels for oxygen and electrolyte and reduce the corrosion resistance of the metal substrate [11, 14]. Int. J



Earlier investigations have shown that corrosion products of weathering steel presented photovoltaic effect under illumination. In this study, we explored the influence of chloride ions on this