

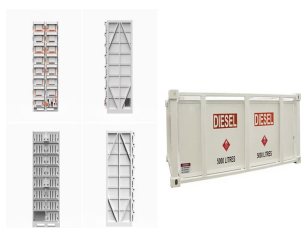
# PIPELINE WELL SOLAR WATER PIPE SUPPORT



Match the Pipe Pressure Rating: Ensure the pipes can handle the maximum pressure produced by the pump. Consider Pressure Losses: Account for pressure losses due to friction and elevation changes in the pipe ???



Half Clamp Suspension Pipe Clamps are used on plumbing and hydronic systems, eliminating contact between the pipe and framing surface to reduce the transmission of water-line noise. Its ribbed design insulates against water line noise and pipe expansion and contraction. DuoFit??? Pipe Support With Nails provides fast and easy installation for 1/2" and 3/4" CTS piping with ???



Pipe Storage and Transportation. PipePillo (R) structured pipeline supports were engineered to safely hold up to 80,000 lbs and provide a full 90 degrees of support, making it an ideal solution for pipe storage and transportation. Help protect your pipe by limiting ovality, improving drainage, and lowering costs by having a PipeSak(R) engineer design your pipe storage solution using the



Water Pipe-Hose Clamps Heavy Duty. Water pipe-hose clamps heavy duty wall mount ideal for blue water pipe and aquatic flexible corrugated ribbed hoses. These quality British made pipe clamps are very strong and cable of securing heavy duty water pipes. Ideal for irrigation, fisheries, aquatic, solar water heating systems and water filtration.



Solar Still with Heat Pipe an Experimental Approach A.SENTHILRAJAN1, L.RAJESHKANNA2, V.VINOTH3 a prototype to desalinate water using some of the already existing solar water heating equipment as a solution to Support structures form the sides of the still as well as the basin, and support the glazing cover. ier to clean any sediment

# PIPELINE WELL SOLAR WATER PIPE SUPPORT



There is a pipe for every project though, and the challenge is knowing how to sift through the variables, which include soil conditions, material availability, water chemistry, pipeline diameter, contractor ability, and many others. The following discussion highlights a few variables that we often encounter and consider during pipeline design.



[ Pipeline connections ] Connect the water pipe line, try to use the special composite pipe or cross-linked pipe, to reduce the water rust and heat loss, piping using insulation materials the better is fixed on the stand or building, if in the cold areas, drain valve can be added, so the emptying of the water in the pipe line.



Pipeline Supports are logistic structures used to support Pipelines. All kinds of Supports allow a Pipeline to be attached to it from both sides. Pipelines keep on working even if the Supports supporting them are dismantled. Standard Pipeline Supports are built by clicking ( ) once to set the location, then scrolling to rotate (or Ctrl angle) and looking up or down to change the height (if



Case three: Pipe stringing and welding Usage: PipePillo ??? structured pipeline supports were used for low-level stringing of the pipe along the right-of-way in place of wooden cribbing.. Project: The Brantford to Kirkwall pipeline expansion project was a 1219 mm (48 in.) OD, 14 km (8.7 mi.) expansion to an existing line in southwestern Ontario, Canada.



Pipe supports (or pipe hangers) transfer the load from a pipe to its supporting framework, absorb shock, and accommodate thermal expansion & contraction. This load includes the pipe's own weight, the materials it transports, any attached fittings, and external coverings such as insulation. Common types include pipe brackets, clamps, hangers, and saddles. Browse our catalogue ???

# PIPELINE WELL SOLAR WATER PIPE SUPPORT



The Farm and Ranch Water Infrastructure Program (FRWIP) supports the development of secure and sustainable water sources for agriculture use. All applicants must demonstrate an agricultural use for the water. Dugout, pipeline and well projects are eligible for a maximum rebate of 50 per cent of eligible costs. Solar/wind/composite livestock



Determine the head of the deep well pump based on the depth of the well and the head loss in the water delivery pipeline. It is equal to the vertical distance from the water level to the water surface in the outlet pool ???



The bottom of the trench should have a proper foundation. This means that the slope should be adequate enough for the water line pipe to sit on. Further, the material should be free of rock as well as construction debris. Use bedding material so that it provides support for the pipe. In most instances, this material is sand.



1. Pipe Bearing Support. These pipe supports are usually primary, directly connecting to the pipe to bear the load of the piping system. The installation specifics depend on the chosen support's size and design. Typically, these supports are either bolt-fastened or welded. Pipe Support Design. Function. Advantage



Types of Pipe Support Rigid Support. Rigid supports are used to restrict pipe movement in certain direction(s) without any or limited flexibility in that direction. Main function of a rigid support can be: Anchor or 3 Dimensional Stop. In this type of support arrangement, pipe is fixed with reference to the supporting structures.

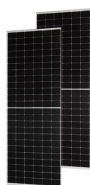
# PIPELINE WELL SOLAR WATER PIPE SUPPORT



Introduction. Many urban areas have entered an era where the average life span of pipelines laid down in the late 1800s to the 1950s is running out (e.g. AWWA Citation 2001; Barton et al. Citation 2019; Lee and Meehan Citation 2017). Therefore, prioritising pipe rehabilitation actions, i.e. measures for restoring or upgrading the performance of existing ???



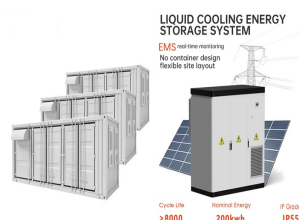
**KEYWORDS:** water pipes, pipeline failures, asset management, risk, scenario analysis, data exploration. 1. INTRODUCTION Water pipe networks are ageing and consequently failure rates are increasing. However, there are limited funds available for Water Utilities and this necessitates the efficient use of available funds. In 1998/99 the cost of



After installing the Vacuum tube solar collectors on the roof and finding a good spot for the installation of solar water storage tank and pumping station, choosing a reliable and easy to install piping system should be a priority for both the installer and home owner. On the one hand, home owner wants a cost effective and a trouble free piping system for the lifetime ???



water needs. The preferred pipeline route This pipeline will start northeast of Little Melton - to the east of the Norwich Southern Bypass and will end at the existing High Oak reservoir, in Wymondham. This pipeline is part of a wider network of interconnecting pipelines across the region. It will connect into our existing water network to ensure



Pipe spacers are used to support and electrically insulate a pipeline from a casing pipe through which it must pass. Typical uses include river, canal and bridge crossings, as well as road and rail crossings. The bespoke range of spacers ???

# PIPELINE WELL SOLAR WATER PIPE SUPPORT



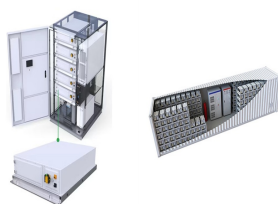
Find Solar Water Heater Pipe manufacturers, suppliers, dealers & latest prices from top companies in India. White Solar Hot Water Pipeline. Get Latest Price. MOQ 40 Piece/Pieces. Color White. More details Shree Anbu Associates Customer Support. Help Center User Guide Return & Cancellation Policy Shipping & Delivery Policy. About Us.



Borehole/Well Pump ???The total length of water pipe required is: ???Distance from top of submersible pump to top of borehole/well + distance between borehole/well and the outlet at the storage tank. 20 Surface Pump For the surface pump there will be two water pipes: ??? The suction water pipe; and ??? The discharge water pipe.



Pipe shoes and saddles are support components that provide both load-bearing support and protection to the underside of the pipe. They are commonly used to support horizontal pipes resting on beams, piers, or other structural elements. ???



Hangers: Used to support the pipe weight. Rigid hangers consist of components that do not permit vertical movement (in the axis connecting the pipe to the structural steel base) but do permit lateral or axial swinging. Spring hangers allow both vertical motion and either lateral or axial swinging. Hangers usually consist of a carbon steel structural attachment ???



This is to guard against the lateral movements due to thermal expansion, including solar radiation. Pipe shoe supports of varying heights used on sloping lines shall be designed to withstand buckling loads. Pipe Support for Piping ???

# PIPELINE WELL SOLAR WATER PIPE SUPPORT



Vertical Pipe Support Bracket. A vertical pipe support bracket is a structural element designed to hold, guide, and support vertical piping. These brackets are typically attached to walls, ceilings, or other structural elements, providing a secure point of support that prevents pipes from shifting, sagging, or becoming misaligned due to gravity, thermal expansion, or external forces.



Solar Pipe Flashing For Roofs . Solar pipe lead or aluminium flashing for slate and tiles roofs with flexible black rubber cones suitable for pipe diameters of 5 to 50 mm are available in this selection. Solar Pipe Nuts . BES stocks a wide range of solar pipe brass nuts for DN16 pipe fittings used for connecting solar pipe, with the most



qR Copper adaptor pipe stub - 22 mm x c in. x 4 in. long qT Solar-Divicon DN20 S1 Solar collector sensor S2 Tank sensor P1 Solar Divicon Pressure Drop of the Solar Flow and Return Lines Per 3.28 ft (1m) pipe length, corrugated stainless steel pipe DN 16, relative to water, corresponds to Tyfocor LS at approx. 140°F (60°C).



Purpose or Functions of Piping Support. The various functions that pipe support serves are as follows: To prevent Pipe stresses above allowable.; To eliminate the Leakages in joints.; To absorb Excessive Line Vibrations.; To counter the undesirable effects of Seismic, wind, water hammer, slug, and other dynamic loadings.; To remove unintentional disengagement of piping ???