

# PLANET POWER SYSTEMS HEARD AND MCDONALD ISLANDS



Where are the Heard and McDonald Islands located? The Heard and McDonald Islands are remote subantarctic volcanic features located in the Southern Ocean, halfway between Australia and South Africa. They are approximately 1700 km from the Antarctic continent and 4000 km southwest of mainland Australia (Australian Government 2016 ). Heard Island is 43 km long and 21 km wide.



Why is the Heard Island & McDonald Islands Marine Reserve being reviewed? The Heard Island and McDonald Islands Marine Reserve is currently being reviewed by the Australian government. Current protection levels are inadequate to protect areas of significant conservation value in this region, such as foraging grounds for species like the HIMI penguins.



Who manages Heard Island & McDonald Islands? They are managed by the Australian Antarctic Division. The islands are unoccupied by humans and remain one of the world's least anthropogenically disturbed areas. A map of Heard Island and McDonald Islands land areas updated in 2024 with recent coastline mapping and 2014 glacial???



How big is Heard Island & McDonald Islands? The group's overall land area is 372 km<sup>2</sup> (144 sq mi) and it has 101.9 km (63 mi) of coastline. Discovered in the mid-19th century, the islands lie on the Kerguelen Plateau in the Indian Ocean and have been an Australian territory since 1947. Heard Island and McDonald Islands contain Australia's only two active volcanoes.



Why did Australia start a research station on Heard Island? In December 1947, Australia established a research station at the north-western end of Heard Island, at Atlas Cove. The station was originally planned for Spit Bay at the eastern end of the island, but poor weather prevented landing operations there. During the 9 years that the station was operated, ninety-one expeditioners wintered on the island.



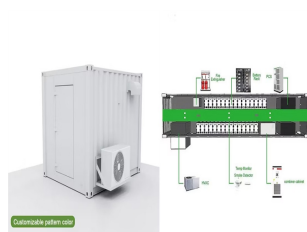
# PLANET POWER SYSTEMS HEARD AND MCDONALD ISLANDS



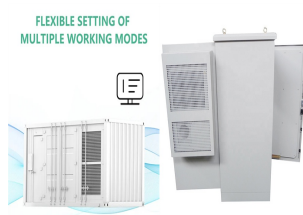
Is Heard Island a subantarctic island? The fauna of the freshwater pools, lakes, streams and mires found in the coastal areas of Heard Island are broadly similar to those on other subantarctic islands of the southern Indian Ocean. Many species reported from Heard Island are found elsewhere.



The volcanically active islands of Heard and McDonald are in the Southern Ocean, 1700 km from the Antarctic continent, as part of Australian territory. They are one of the most pristine ecosystems in the world, with complete absence of alien animal and vegetal species and with minimal impact from human activities.



The nearest landmass to the Heard and McDonald Islands is Kerguelen Island, part of the French Southern and Antarctic Territories, 450 kilometers to the northwest. Mawson Volcano on Heard Island holds another record: it is the only known permanently active volcano in the subarctic region of the earth.



Overview Wildlife History Geography Administration and economy See also Further reading External links



In 1979/80, a National Mapping expedition visited Heard Island for little more than 2 weeks. During this visit, the second landing was made on McDonald Island, this time by amphibious vehicle. A small team was present on the island for 5 days ???



# PLANET POWER SYSTEMS HEARD AND MCDONALD ISLANDS



Heard Island is 43 km long and 21 km wide. McDonald Islands are a group of uninhabited rocky islets, 40 km west of Heard Island (Encyclopaedia Britannica 2006). Heard Island has approximately 362.5 km<sup>2</sup> of area and the McDonald Island, 2.6 km<sup>2</sup>. The site includes the adjacent offshore rocks and shoals and all territorial waters to a distance of 12 nautical ???



Heard Island and McDonald Islands. Heard Island and the McDonald Islands uses UTC +0500. Perfect for a couple of barren islands located at 53° 6'?? 0'?? S and 73° 31'?? 0'?? E. Of course all time zones would do for an uninhabited island. Heard Island and McDonald Islands are one of the most remote places on the planet.



The remote, volcanic Heard Island and McDonald Islands make a stunning backdrop to watch friendly seals and various birds in their natural habitat. Start your Antarctic expedition here with Planet Cruise.



Heard Island and McDonald Islands (HIMI) are a sub-Antarctic island group. They are located in the Southern Ocean, about 4,000 km south west of mainland Australia. Penguins are by far the most abundant birds on the island.



HEARD AND MCDONALD ISLANDS AUSTRALIA Heard Island and the McDonald Islands are in the Southern Ocean, approximately 4,100 km south-west of Perth and 1,700 km from the Antarctic continent. Their distinctive conservation value is as one of the world's rare pristine island ecosystems which have virtually no ???



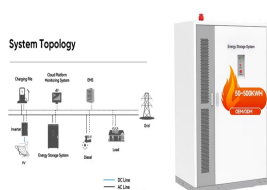
# PLANET POWER SYSTEMS HEARD AND MCDONALD ISLANDS



Located in the Southern Ocean, this Australian external territory comprises mainly two volcanic islands, Heard Island and the McDonald Islands, featuring stark volcanic landscapes, glaciers, and the highest mountain in Australian territory, Mawson Peak. Significance.



Karte der Inseln Die Insel Heard mit dem Vulkan Big Ben. Heard und die McDonaldinseln (englisch Heard Island and McDonald Islands) sind ein australisches Aussengebiet im s?dlichen Indischen Ozean.Das Gebiet hat die amtliche Bezeichnung Territory of Heard Island and McDonald Islands (Abk?rzung: HIMI, deutsch: Territorium Heard und McDonaldinseln).  
[1]Die ???



????? 1/4 ??????????????????????<???? (????? 1/4  
?????????????????????????????????<?????????????????????Heard Island  
and McDonald Islands ? 1/4 ?HIMI)  
?????????????????<????????????????????? 1947????????? 1/4  
?????????(C)????????? 1997?????????????????????????????(R)? 1/4 ?? 1/4  
???<?????????????????



McDonald Islands. Clarke visited Heard and McDonald Islands for a few days in March 1980 as part of a National Mapping expedition to the islands and his samples are housed at Monash University. Geologists J. Barling and G. Wheller spent two months on the island as part of the helicopter-supported 1986-87 Heard Island ANARE.



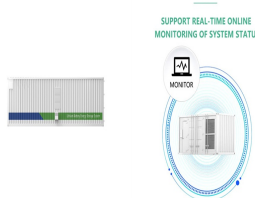
Heard and McDonald Islands: A Comprehensive Guide for Tourists Table of Contents Introduction Geography and History 2.1 Heard Island 2.2 McDonald Islands Climate and Wildlife Travel Information 4.1 How to Get There 4.2 When to Visit 4.3 What to Pack Things to Do and See Safety and Regulations Tips for Responsible Travel Useful Resources 1. Introduction ???



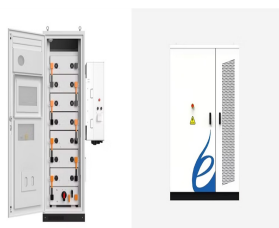
# PLANET POWER SYSTEMS HEARD AND MCDONALD ISLANDS



Heard and McDonald Islands 2020 Conservation Outlook Assessment  
SITE INFORMATION Country: Australia Inscribed in: 1997 Criteria: (viii)  
(ix) Heard Island and McDonald Islands are located in the Southern Ocean, approximately 1,700 km from the Antarctic continent and 4,100 km south-west of Perth. As the only volcanically active subantarctic islands



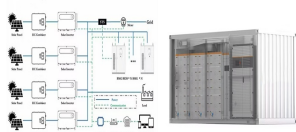
Public consultation paper 1 Purpose of this document The Proposal to expand Heard Island and McDonald Islands Marine Reserve ??? Public consultation paper ("proclamation proposal") has been prepared to support public consultation on the proposed design of an expanded Heard Island and McDonald Islands (HIMI) Marine Reserve.



The Heard & McDonald Islands site in Australia was inscribed on the World Heritage List in 1997. As the only volcanically active sub-Antarctic islands, Heard and McDonald provide the opportunity to observe ongoing geomorphic processes and glacial dynamics.



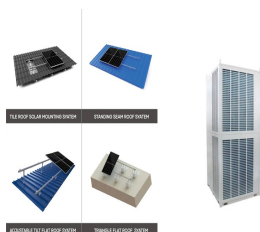
PLANET POWER IS NOW JST SOLAR Book A Site Inspection We know the solar industry can be complicated. So our mission is to provide every client with honest, transparent and informative communication. We can design your ultimate system for immediate installation, or offer a customised modular solution where upgrades can be added when your budget allows.



In the heart of the Southern Ocean lies a haven for wildlife: Heard Island and McDonald Islands (known as HIMI) - home to some of the most iconic and ecologically significant penguin species on the planet. But HIMI is ???



# PLANET POWER SYSTEMS HEARD AND MCDONALD ISLANDS



? 1/4 ? Heard Island? 1/4 ?, ,3800,2000,40,???1953,???1997??? ???



It is the biggest contribution to ocean conservation anywhere on the planet this year. The Heard and McDonald Islands marine reserve will quadruple in size, an increase of almost 310,000 km<sup>2</sup> ??? an area larger than Italy ??? and will provide greater protections for an environment unlike anywhere else in the world.



?le Heard et ?les Mcdonald fuseaux horaires, afficher les fuseaux horaires, carte des fuseaux horaires, afficher l'heure locale actuelle dans les villes et les pays, horloge, fuseaux horaires internationaux, dates de changement d'heure, heure d"?t?, horloge standard



Heard Island and Mcdonald Islands Time Zones. Heard Island and Mcdonald Islands 00:59 2024-12-11. Guam time zones . Fiji time zones . Kiribati time zones . United Arab Emirates time zones . Paracel Islands time zones . Mauritania time zones . French Polynesia time zones . ???

## APPLICATION SCENARIOS



The Heard Island and McDonald Islands Marine Reserve, located around 4,000 kilometers southwest of Perth and 1,700 kilometers from Antarctica, contains some of the world's most pristine ecosystems. These remote islands are recognized for their glaciers, marshes, and Australia's only active volcanoes, making them one of the least damaged



# PLANET POWER SYSTEMS HEARD AND MCDONALD ISLANDS



Figure 1. Location of Heard Island and McDonald Islands 2 Figure 2. HIMI Marine Reserve boundaries 2 Figure 3. Terrestrial zones in the HIMI Marine Reserve 35 Figure 4. Atlas Cove Zones 36 Figure 5. Spit Bay Zones 37 Figure 6. Long Beach Visitor Access Zone 37 Figure 7. General map of Heard Island and the McDonald Islands 100 Figure 8.



In the heart of the Southern Ocean lies a haven for wildlife: Heard Island and McDonald Islands (known as HIMI). HIMI are a subantarctic island group and Australian external territory located in the Southern Ocean, around 4,000km southwest of Australia and 1,000km north of Antarctica.