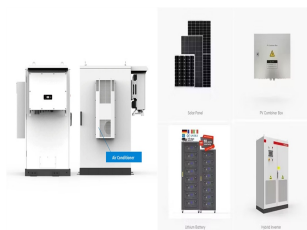


POWER GENERATION SOLAR PANEL FRAME



However, solar panel mounting frames are vital to ensuring this precise alignment and maximizing energy generation. Solar Mounting Frames emerge as indispensable components in the quest for efficient solar power systems for utility-scale projects or rooftop installations. These structural frameworks play a pivotal role by providing a secure



Explore the anatomy of a solar panel with Potentia Engineering. We delve into common parts like the frame, glass, and wiring, explaining their functions in detail and how they contribute to reliable solar power generation.



Discover the benefits of aluminum solar panel frames and custom designs. Explore mounting options for efficient solar energy systems. Understanding Solar Panel Frames; Solar energy has become an increasingly popular and ???

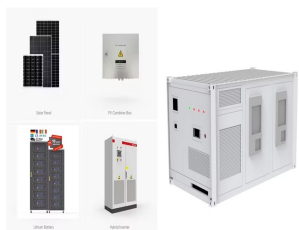


The AIKO 615Wp N-Type ABC 72 Cell Solar module has excellent light decay resistance performance and mechanical load performance and making it one of the most efficient solar panels on the market. Premium, Modern Appearance. These AIKO 615Wp Silver Frame solar panels offer an elegant and premium looking appearance.



Solar panels need direct sunlight to harness the full potential of solar energy. These are placed at precise angles to maximize sun exposure. Solar panel frames play a vital role in holding these modules at these specific angles and thus help in maximizing power generation. Solar panel frames are essential parts of solar power systems, [???

POWER GENERATION SOLAR PANEL FRAME



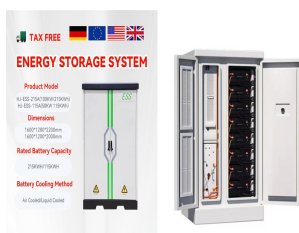
The cells are then arranged in an array and covered by an aluminium frame to create a complete solar panel unit. The frame helps to keep the cells in place and also creates electrical contacts between them for efficient power generation. The entire system is then tested for performance and safety before it is ready to be used to capture



How does the angle at which solar panels are tilted affect power generation and how can RatedPower ensure the most efficient tilt for your solar plant? of the sun's rays that can reach a panel is key to getting the most output from PV modules to maximize a plant's power generation. The more sunlight each solar panel can convert into



In the UK, we achieved our highest ever solar power generation at 10.971GW on 20 April 2023 Solar panels are usually made from silicon, or another semiconductor material, installed in a metal panel frame with a glass ???



Mounting system: This is the frame or structure that holds the solar panels in place, ensuring they are angled correctly for optimal sunlight capture. It also provides support and stability for the panels throughout the year. typically by 10% to 40% compared to fixed panels. Moreover, solar power generation systems need electrical



Solar Panel Frame: Structural Support. The frame of a solar panel serves both as the pillar that holds everything together, and as the hallmark that protects all the parts of the whole panel together. These frames most often are constructed from aluminium, the reason for it being such a light in weight and corrosion resistant material.

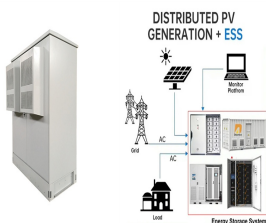
POWER GENERATION SOLAR PANEL FRAME



Frame-Mounted Solar Panels. Standard, frame-mounted solar panels ??? also called rack-mounted solar panels ??? resemble a rooftop solar panel installation. Ground-mounted bifacial solar panels generate power from diffused or reflected sunlight on the back and direct sunlight on the front. They cost more to install than monofacial panels



Solar array mounted on a rooftop. A solar panel is a device that converts sunlight into electricity by using photovoltaic (PV) cells. PV cells are made of materials that produce excited electrons when exposed to light. The electrons flow through a circuit and produce direct current (DC) electricity, which can be used to power various devices or be stored in batteries.



Every Solar Smart unit can be used alone or connected to other Solar Smart plug-in solar panels to distribute power across larger sites with higher power demands. Once solar power has been generated through the Solar Smart Frame, the ???



Most home solar panels that installers offer in 2024 produce between 350 and 450 watts of power, based on thousands of quotes from the EnergySage Marketplace. Each of these panels can produce enough power to run appliances like your TV, microwave, and lights. To power an entire home, most solar panel owners need 17 to 30 solar panels.. The amount of ???



Innovative Solar Frames. Robots, lasers, electricity from the sun and over 35 patents in 50 years, Powers Solar Frames know what they are doing! Whether you use the straight box beam or tapered design, you will benefit from faster installation, a pleasing design, no on-site welding and fewer inspections. Using Conventional methods a 3 man

POWER GENERATION SOLAR PANEL FRAME



the next generation of solar panels MORE INFO [arrow_forward_ios](#) Solar Glass Enjoy your garden Award winning crystalline silicon captures and absorbs the sun rays and converts the energy into power to be used or stored. READ ???



The AIKO Neostar 470W, 23.6% Efficiency, N-Type ABC, 54 Cell, Black Frame Gen2 MC4 solar panel is a high-efficiency mono-crystalline module featuring 54 Half-Cell technology and an 11-busbar configuration, reaching an impressive 470Wp.



This Renogy High-powered 550-Watt Monocrystalline Solar Panel maximizes power output while minimizing installation space and system equipment costs, primarily used for utility-scale systems, solar power plants, residential and commercial applications. Click to learn more.



Solar power is usable energy generated from the sun with solar panels. It is a clean, inexpensive, and renewable power source available everywhere. a metal frame, a glass casing unit, and wiring to transfer electric current from the silicon. and high-temperature used for electrical power generation. Solar thermal energy has a broader



Hourly energy requirements (kWh) x peak sunlight hours / solar panel wattage (kW) x 1.25 our example, we'd need $.83 \times 4 / .300 \times 1.25 = 13.83$ solar panels. Round that up to 14, and we've got an array. Mounting your solar panels. When it comes to mounting solar panels, you've got a ???

POWER GENERATION SOLAR PANEL FRAME



Newframe offer a full Design, Manufacture and Build Project Management service. We offer technical advice that works best for your property and your needs and our range of Solar Carports are the only ones available on the UK market today. Newframe's products integrate into your existing home and way of life in a way that delivers best-in-class performance at the best price ???



Solar panels, or photovoltaics (PV), capture the sun's energy and convert it into electricity to use in your home. Installing solar panels lets you use free, renewable, clean electricity to power your appliances. You can sell extra ???



The SOLARA solar panels of the Power Mobil series are used wherever a permanent installation is not possible. Ideal for campers, mobile homes, vans and caravans, but of course also on boats and sailing yachts. In remote areas of ???



Solar panel frame is paramount in solar installations as it secures key solar panel units such as PV cells, Glass, back sheet, and EVA film. It provides essential structural support to the whole ???



Solar panel size refers to the total amount of power a solar panel can generate over a period of time; Solar panel dimensions refers to the physical size of a solar panel; Solar panel sizes and wattage range from 250W to 450W, taking up 1.6 to 2 square metres per panel.

POWER GENERATION SOLAR PANEL FRAME



Solar Glazing ??? the next generation of solar panels for carports, canopies, conservatory rooves, greenhouses and poolhouses, giving you renewable power and practical performance in your home as well as the ability to reduce your ???



The Role of Metal Frames in Solar Panels. In India, solar power has become a lot more affordable. Back in 2013, the cost for utility-scale solar varied a lot across countries. It was \$1.4 per watt in China and \$3.3 in ???



The Core Components that Power Solar Panel Systems. The guts of solar panels show why certain silicon cells matter in making them. It's all about turning sunlight into electricity. The material used makes the panels last longer and work better. As more people get solar panels, it's good to know what they're made of.



Solar panels without frame Solar panels without a frame can simply be glued or screwed directly onto the surface. On a stable base and flat mounting, the solar panels without a frame can even be walked on. SOLARA solar systems are used for off-grid power generation. Solar panels from SOLARA are designed in such a way that they can withstand



Key features of the JA Solar 500W Solar Panel: Exceptional Power Output: The JAM66S-30-500-MR-TS-MC4 boasts a high power output of 500 watts, making it one of the most potent solar panels on the market. This exceptional power generation capability ensures you can maximize your energy production and minimize your dependence on the grid.

POWER GENERATION SOLAR PANEL FRAME



We delve into common parts like the frame, glass, and wiring, explaining their functions in detail and how they contribute to reliable solar power generation. The growing adoption of renewable energy sources has placed solar power at the forefront of ???