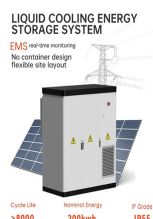


POWER STATION SUPPORTING ENERGY STORAGE SYSTEM



Which energy storage power station successfully transmitted power?
China's largest single station-type electrochemical energy storage power station Ningde Xiapu energy storage power station(Phase I) successfully transmitted power. China Energy Storage Alliance On November 16,Fujian GW-level Ningde Xiapu Energy Storage Power Station (Phase I) of State Grid Times successfully transmitted power.



What are energy storage systems? Energy storage systems (ESSs) are effective tools to solve these problems,and they play an essential role in the development of the smart and green grid. This article discusses ESSs applied in utility grids. Conventional utility grids with power stations generate electricity only when needed,and the power is to be consumed instantly.



What is a battery energy storage system? Battery energy storage systems are generally designed to be able to output at their full rated power for several hours. Battery storage can be used for short-term peak power and ancillary services,such as providing operating reserve and frequency control to minimize the chance of power outages.

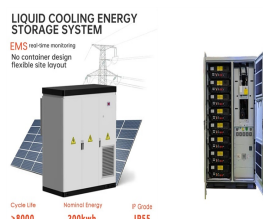


What is a battery energy storage system (BESS)? A battery energy storage system (BESS) or battery storage power station is a type of energy storage technology that uses a group of batteries to store electrical energy.

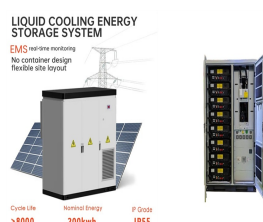


What is a battery storage power plant? Battery storage power plants and uninterruptible power supplies (UPS) are comparable in technology and function. However, battery storage power plants are larger. For safety and security, the actual batteries are housed in their own structures, like warehouses or containers.

POWER STATION SUPPORTING ENERGY STORAGE SYSTEM



Which energy storage systems are included in the IESS? In the scope of the IESS, the dual battery energy storage system (DBESS), hybrid energy storage system (HESS), and multi energy storage system (MESS) are specified. Fig. 6. The proposed categorization framework of BESS integrations in the power system.



Coordinated control strategy of multiple energy storage power stations supporting black-start based on dynamic allocation. Author links open overlay panel Cuiping Li a, Shining Zhang b, Junhui Li a, Due to the disordered charging/discharging of energy storage in the wind power and energy storage systems with decentralized and independent



energy storage systems can support electric vehicle (EV) fast charging infrastructure. It is an informative resource that may help states, communities, and other If the battery energy storage system is configured to power the charging station when the power grid is



In addition, each module has a maximum power rating of 414.8 W, giving the maximum output power of the plant to be $N \times M \times 414.8$ W. For the 3 MW plants, there are two solar arrays, It follows that the need for effective control schemes for battery energy storage systems that support them will become significantly important. Thanks to their



The prologue to this creative endeavor creates the opportunity for the most recent smart energy system trademark, the Virtual Power Plant (VPP), that ingeniously integrates and independently processes numerous distributed energy resources, energy storage utilities, and loads, which portrays and controls the energy generation activities and

POWER STATION SUPPORTING ENERGY STORAGE SYSTEM



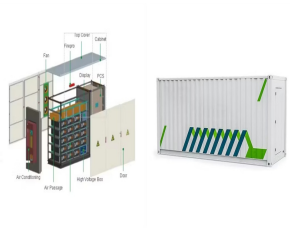
10 . As the first large-scale centralized shared energy storage power station in Tianchang, the facility comprises a 220 kilovolt booster station and supporting energy storage power station, with a



As large-scale lithium-ion battery energy storage power facilities are built, the issues of safety operations become more complex. The existing difficulties revolve around effective battery health evaluation, cell-to-cell variation evaluation, circulation, and resonance suppression, and more. Based on this, this paper first reviews battery health evaluation a?|



Tehachapi Energy Storage Project, Tehachapi, California. A battery energy storage system (BESS) or battery storage power station is a type of energy storage technology that uses a group of batteries to store electrical energy. Battery storage is the fastest responding dispatchable source of power on electric grids, and it is used to stabilise those grids, as battery storage can a?|



The power station, with a 300MW system, is claimed to be the largest compressed air energy storage power station in the world, with highest efficiency and lowest unit cost as well. With a total investment of 1.496 billion yuan (\$206 million), its rated design efficiency is 72.1 percent, meaning that it can achieve continuous discharge for six



Power systems are undergoing a significant transformation around the globe. Renewable energy sources (RES) are replacing their conventional counterparts, leading to a variable, unpredictable, and

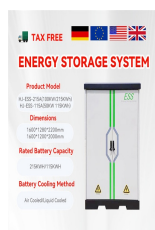
POWER STATION SUPPORTING ENERGY STORAGE SYSTEM



Electric power companies can use this approach for greenfield sites or to replace retiring fossil power plants, giving the new plant access to connected infrastructure. 22 At least 38 GW of planned solar and wind energy in the current project pipeline are expected to have colocated energy storage. 23 Many states have set renewable energy



10 . As the first large-scale centralized shared energy storage power station in Tianchang, the facility comprises a 220 kilovolt booster station and supporting energy storage power station, with a



Regarding energy storage power stations, energy storage systems configured in a wind power station can significantly reduce the total expected cost and ease the intermittence of wind output (Qi et al., 2015). A two-stage optimization method can be used to determine the



The MITEI report shows that energy storage makes deep decarbonization of reliable electric power systems affordable. "Fossil fuel power plant operators have traditionally responded to demand for electricity a?? in any given moment a?? by adjusting the supply of electricity flowing into the grid," says MITEI Director Robert Armstrong, the Chevron Professor a?|



Power systems are undergoing a significant transformation around the globe. Renewable energy sources (RES) are replacing their conventional counterparts, leading to a variable, unpredictable, and distributed energy supply mix. The predominant forms of RES, wind, and solar photovoltaic (PV) require inverter-based resources (IBRs) that lack inherent a?|

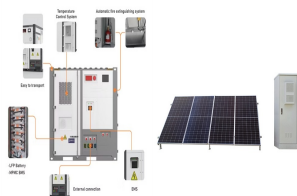
POWER STATION SUPPORTING ENERGY STORAGE SYSTEM



In the past few decades, electricity production depended on fossil fuels due to their reliability and efficiency [1]. Fossil fuels have many effects on the environment and directly affect the economy as their prices increase continuously due to their consumption which is assumed to double in 2050 and three times by 2100 [6] g. 1 shows the current global a?]



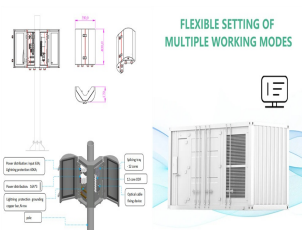
The book has 20 chapters and is divided into 4 parts. The first part which is about The use of energy storage deals with Energy conversion: from primary sources to consumers; Energy storage as a structural unit of a power system; and Trends in power system development.



BESS solutions can accelerate decentralised power station infrastructure which can add value to commercial and utility-scale power generation models Using these battery energy storage systems alongside power generation technologies such as gas-fired Combined A BESS can also support power generation assets. Commercial and Industrial



The energy storage station is a supporting facility for Ningxia Power's 2MW integrated photovoltaic base, one of China's first large-scale wind-photovoltaic power base projects. it can inject impetus into the transformation and upgrade of the energy structure and the building of the new power system. CHN ENERGY Investment Group Co.,LTD



Due to the dual characteristics of source and load, the energy storage is often used as a flexible and controllable resource, which is widely used in power system frequency regulation, peak shaving and renewable energy consumption [1], [2], [3]. With the gradual increase of the grid connection scale of intermittent renewable energy resources [4], the flexibility a?]

POWER STATION SUPPORTING ENERGY STORAGE SYSTEM



Battery energy storage systems (BESS) are a key element in the energy transition, with several fields of application and significant benefits for the economy, society, and the environment. Enel Green Power S.p.A. VAT 15844561009



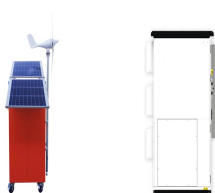
As renewable energy continues to be integrated into the grid, energy storage has become a vital technique supporting power system development. To effectively promote the efficiency and economics of energy storage, centralized shared energy storage (SES) station with multiple energy storage batteries is developed to enable energy trading among a group of entities. In a?]



Energy / generation services. Utility-scale storage refers to technologies connected to the power grid that can store energy and then supply it back to the grid at a more advantageous time a?? for example, at night, when no solar power is available, or during a weather event that disrupts electricity generation.



Large-scale integration of renewable energy in China has had a major impact on the balance of supply and demand in the power system. It is crucial to integrate energy storage devices within wind power and photovoltaic (PV) stations to effectively manage the impact of large-scale renewable energy generation on power balance and grid reliability.



Electric vehicles (EVs) play a major role in the energy system because they are clean and environmentally friendly and can use excess electricity from renewable sources. In order to meet the growing charging demand for EVs and overcome its negative impact on the power grid, new EV charging stations integrating photovoltaic (PV) and energy storage a?]

POWER STATION SUPPORTING ENERGY STORAGE SYSTEM



On May 14, 1968, the first PSPS in China was put into operation in Gangnan, Pingshan County, Hebei Province. It is a mixed PSPS. There is a pumped storage unit with the installed capacity of 11 MW. This PSPS uses Gangnan reservoir as the upper reservoir with the total storage capacity of $1.571 \times 10^9 \text{ m}^3$, and uses the daily regulation pond in eastern Gangnan as the lower a?]



Thus, the installation of battery energy storage system (BESS) is extensively used for providing virtual inertia support. This paper proposed a coordinated dynamic control scheme for a PV power station equipped with the BESS system, aiming to provide frequency support and virtual inertia to the power system during disturbance.