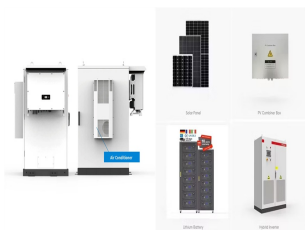


# PRECAUTIONS FOR INSTALLING PHOTOVOLTAIC PANELS IN FACTORIES



**Introduction** This short article is not meant to be a complete guide to the building regulations in relation to installing photovoltaics. Our intention in writing this article is to provide a focus on solar photovoltaics, an area where specific guidance is hard to find and highlight potential discussion points between the client and the installer in order to ensure that PV installations are



855, IBC, IFC, BRE & Renewable energy magazine, Best Practice Guidelines for Solar Power, Best Practice Guidelines for Solar Power Building Projects. Remember: Any technical changes to a factory such as the addition of solar panels should be reported using the Technical Changes Tab 3 of Nirapon's 90-day Safety Management Guidance and Monitoring



**Play safe .** Pull the solar panel fuse as recommended by the manufacturers. Yes, the risk of a big bang is minimal - but even 0.01amp can spark - and removing the fuse also protects the electronics in the panel controller if battery polarity is reversed or shorted.



**Weather-Related Solar Panel Risks.** Solar panels are exposed to all kinds of weather conditions, which may be a risk to use and longevity. Below, we detail the weather-related hazards and the requisite maintenance a?)



**Safety Equipment:** Gather all essential safety gear, such as helmets, gloves, and harnesses, to protect yourself and your installation crew during the installation process. 2. **Solar Panel Installation Safety.** During solar panel installation, follow these safety guidelines to avoid accidents and ensure a secure setup:

# PRECAUTIONS FOR INSTALLING PHOTOVOLTAIC PANELS IN FACTORIES



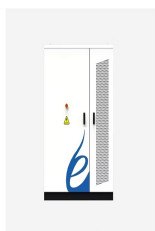
Solar installation can be a dangerous job if the right safety precautions for Solar panels aren't taken. But exactly how dangerous? According to some estimates, working in the Solar industry is three times more dangerous than being employed in the Windpower sector. When calculated in relation to the amount of power each industry produces, it



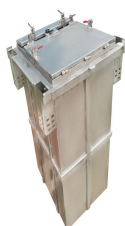
Based on the known risks when it comes to installing solar, it is important to not only be aware of safety precautions and the available tools for prevention, but also to ensure help is available if needed. If a worker falls from a roof or has an accident during installation, it is important to have backup on site for immediate response.



Luckily, lower solar panel safety concerns are another profitable aspect of utilising solar resources. Though solar sources are not as vulnerable as other energy sources, one must consider the possible dangers of solar panels before getting them. Let's find out how to address the key solar safety issues: Safety Tips for Solar Installation



Following these solar panel safety precautions is just the first step. Essential equipment for solar panel installation safety includes PPE like gloves, helmets, boots, and eye protection. Fall protection gear such as harnesses, anchors, and guardrails is necessary when working at heights. Electrical safety tools like ground fault devices



Q1: How much time does the solar panel System installation take? A1: Standard installation time ranges from 1-3 days for a system of typical size and complexity. Features: DIY installations may take longer because of the learning and preparation component.

# PRECAUTIONS FOR INSTALLING PHOTOVOLTAIC PANELS IN FACTORIES



The demand for skilled employees is rising as the solar panel installation business expands quickly. Due to this expansion, solar technicians must pay more attention to safety issues. Without the appropriate safety precautions and tools, installing solar panels can be a dangerous task that can result in fatalities or serious injuries.



-put. Factory fitted bypass diodes will minimize such effect. Do not install the PV modules near naked flame or flammable materials. Do not install the PV modules in a location where it would be immersed in water or constantly exposed to water from a sprinkler or fountain etc. **INSTALLED HOLES USED MECHANICAL LOAD 5400Pa 2400Pa 9 14 8 mounting**



Save up to 60% on your factory's energy bills! Solar panel installation available with Standard Purchase & Power Purchase (PPA) Agreements. Areas we cover. SOUTH WEST; Dorset. Bournemouth. Christchurch. To discuss your solar a?|



SHE Specifications: Finance, Design, Supply, Installation, Operation and Maintenance of Solar Photovoltaic (PV) Rooftop Panels and Battery Storage Systems in the 12 Factories at TASEZ, Silverton Document No: TAS-GSH-SPC01 Revision No: 01 Effective Date: January 2024 Page 2 of 44 Official Approval It is hereby certified that:



Accordingly, necessary precautions are taken to make sure that the PV systems run smoothly. Let's look at the safety measures we take for solar panel installation purpose. The pointers below have been extracted from our safety procedures a?|

# PRECAUTIONS FOR INSTALLING PHOTOVOLTAIC PANELS IN FACTORIES



Factory rooftop photovoltaics are the installation of solar panels on the roof of industrial buildings, utilizing solar energy to generate electricity and provide green energy for the factory. The following are the precautions for photovoltaic systems on the roof of the factory building: 1, Feasibility a?



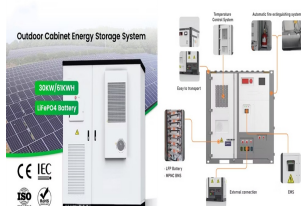
Precautions for inverter installation and maintenance: 1. Before installation, you should first check whether the inverter is damaged during transportation. 2. When selecting the installation site, it should be ensured that there is no interference. Cookies



An example of completely unacceptable installation work practices that could easily result in death or serious injury. Unsafe work at height like this would normally lead to immediate enforcement action by HSE inspectors a?c Solar panel installation is not short duration work and will need scaffolding or similar equipment.



Maximize solar panel safety. Learn about risks and how to prevent them. and flash. It is essential to be aware of these hazards and to take the necessary precautions to ensure the safety of those working on or near the system. Proper installation and maintenance, the use of appropriate safety equipment, and compliance with local building



What Are The Cost Factors For Solar System For Factory. a) The size of the solar panel system. This will be determined by the factory's available roof space, electricity usage, and financial goals. As systems scale a?

# PRECAUTIONS FOR INSTALLING PHOTOVOLTAIC PANELS IN FACTORIES



Precautions To Take Before Installing Solar Panels. Solar panels on roofs have ensured affordability and accessibility in solar energy usage. However, it is necessary to be aware of the precautions before installing. Metal roofing is a well-known choice for solar panel installation owing to its durability, high energy proficiency, life



PV modules are the primary components in a solar panel, converting light directly to electricity. There are two primary types: Silicon PV and Thin Film PV. See also: Carbon Footprint of Solar Panel Manufacturing: Unmasking the Environmental Impact. Solar Panel Components. Solar panel manufacturing begins with understanding what goes into a panel.



Evergreen Solar ES Series photovoltaic (PV, solar electric) panels are designed to produce DC electrical energy from light. This manual contains important safety, installation and operating information with which you should be familiar before using Evergreen Solar panels. 1 of 4 ES Series Photovoltaic Panels Safety, Installation and Operation



Creating a safe work environment is essential during PV installation. Take precautions to protect the installation area. Use flutter tapes to cordon it off. China's reduction in photovoltaic export tax rebates may lead to an increase in module prices, with current solar panel prices in Europe below 6 cents per watt. France plans to



In summary, solar panel cleaning is a straightforward task that you can do, provided you take the necessary precautions and follow the manufacturer's instructions. Just remember, when in doubt or faced with a risky situation, always call in the professionals.

# PRECAUTIONS FOR INSTALLING PHOTOVOLTAIC PANELS IN FACTORIES



Upholding stringent quality standards is crucial in solar panel installations. By implementing precise installation methods, conducting thorough system testing, and ensuring efficient commissioning, solar installers can achieve effective and visually appealing installations that meet industry requirements.



2. Installation Process . Industrial solar panel installation is designed to be adaptable to various structures, whether a large factory, a distribution centre, or a warehouse. During the installation, solar panels are mounted on the roof, making efficient use of a?



Guidelines for Solar Power Building Projects. Remember: Any technical changes to a factory such as the addition of solar panels should be reported using the Technical Changes Tab 3 of a?



Workers must know about the precautions they must take while handling such materials. By strictly adhering to these safety measures, solar workers can execute their tasks efficiently and minimize risks, making solar a?



It is a comprehensive list of safety procedures and precautions that should be taken before, during, and after the installation of a solar panel system. The checklist is designed to ensure that all necessary safety precautions are taken to prevent accidents, injuries, and damage to property during the installation process.

# PRECAUTIONS FOR INSTALLING PHOTOVOLTAIC PANELS IN FACTORIES

---



ARTsolar is South Africa's only locally owned solar panel manufacturer. Shop online for world class solar panels, solar inverters, solar batteries and more. 3.3 Precautions for electrical installation. of ARTsolar brand models of solar photovoltaic modules including factory assembled junction box and cables and components listed below



COST OF SOLAR PANEL INSTALLATION FOR FACTORIES, WAREHOUSES, AND INDUSTRIAL BUILDINGS. The average cost for commercial solar panel installation can be around GBP16,000 to GBP70,000 for a small to medium-sized setup. However, the total cost is heavily dependent on your usage. This is why it is important that factory owners go with a professional