

PRINCIPLE OF PHOTOVOLTAIC PANEL COMBINER BOX



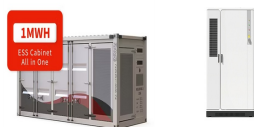
The primary function of a photovoltaic combiner box is to consolidate and distribute the current generated by solar panels. Solar panels convert sunlight into electrical energy, typically ???



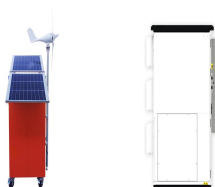
The combiner box in a solar photovoltaic (PV) system aggregates the electrical output from multiple solar panels into a single conduit, which is then fed into the system's inverter. Inside the combiner box, each solar panel connection is equipped with a fuse or circuit breaker ???



1.7 After connecting the solar lightning protection junction box to the solar power generation system according to the principle and installation wiring diagram, it should be reliably connected to the grounding end of the lightning protection box with a ???

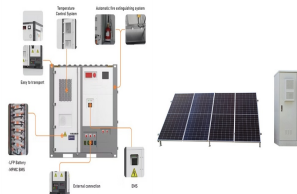


A solar combiner box is an electrical device that combines the output of multiple solar panels into a single DC (direct current) circuit. It is used in PV (photovoltaic) systems, and usually contains fuses or circuit breakers to protect the system from over-current conditions.



A solar combiner box is generally identical to an electrical junction box which houses several wires and cables and joins those connections tightly through different ports of entry. As the name suggests, you use the solar combiner box to bind multiple strings of photovoltaic (PV) modules into one standard bus. The fibers are subsequently attached to the ???

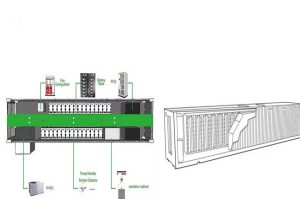
PRINCIPLE OF PHOTOVOLTAIC PANEL COMBINER BOX



The photovoltaic AC combiner box is used in a photovoltaic power generation system with string inverters and is installed between the AC output side of the inverter and the grid connection point/load. It is internally equipped with input ???



The combiner box is a complete set of devices to ensure the orderly connection and confluence function of photovoltaic strings in the photovoltaic power generation system. Generally equipped with



Canadian Solar CS6P-255P 255W Poly Solar Panel . Panel Electrical Characteristics: System Rating (STC): 255 Watts. Max Power Voltage (Vmp): 30.2 Volts. Sizing the Combiner Box . We size the combiner box in nearly ???

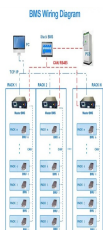


PV DC COMBINER BOX is a complete range of tai- lor-made Level 1 combiner boxes for utility-scale photovol- taic systems. The combiner boxes are installed to join and protect the DC strings that go from the PV panels to the solar inverter. The PV DC COMBINER BOX product range offers solu- tions from 8 to 32 inputs and 1 or 2 outputs. These can



The most common types include standard junction boxes, which handle basic connections; combiner junction boxes, which merge outputs from multiple panels; pass-through junction boxes, allowing uninterrupted connections; integrated junction boxes, which are built directly into the panel for a streamlined look; and half-cut junction boxes, which are designed ???

PRINCIPLE OF PHOTOVOLTAIC PANEL COMBINER BOX



Gambar di atas memperlihatkan combiner box solar panel yang terbuat dari bahan polikarbonat (atas) dan berbahan dasar logam (bawah). Beberapa hal yang perlu dipertimbangkan untuk merancang sistem combiner box solar panel, diantaranya: . Selungkup pelindung harus punya ketahanan yang baik, sebab perangkat ini akan dipasang diluar ???



Solar panel generates DC current: The working principle of the PV combiner box can be imaginatively understood as the "current collection station", and its main task is to unify the management and distribution of the power generated by the photovoltaic panels. It not only collects the current and voltage signals of each group of panels, but



If you're diving into the world of solar power, understanding how to install and use a solar panel combiner box is crucial. A combiner box is a vital component in any solar power system, acting as a central hub where multiple solar panel strings converge. It's the unsung hero that streamlines your system, enhancing both safety and efficiency.

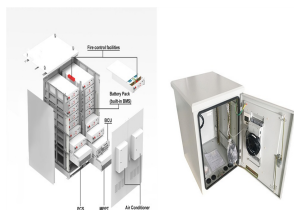


A PV combiner box is the key to housing a joint connection between various panels and the entire system's inverter. Think of this box as the heart of a seamless solar energy solution. What is the Purpose of the PV ???



PV Next protects the PV system against overvoltages and short circuits and also offers the option of combining strings. The various designs are done to protect all string inverters available in the European market. Find the matching combiner ???

PRINCIPLE OF PHOTOVOLTAIC PANEL COMBINER BOX



Despite its unfamiliar name, the photovoltaic combiner box plays a vital role in the photovoltaic power generation system. A PV combiner box can also be called a solar combiner box, and as the name suggests, it is a device used to converge the current generated by the PV panels and to protect, monitor and control the current.



Combiner boxes are critical components of PV systems, gathering and allocating DC produced by solar panels for efficient distribution to subsequent devices. They typically sit beneath PV modules and connect via ???



The Photovoltaic combiner box is designed to optimize the performance of the solar power system by efficiently managing multiple power inputs, reducing energy losses, and ensuring system reliability in a wide range of environmental conditions. the PV combiner box serves as a link between the solar panels and the inverter, not only improving the efficiency of energy ???



The PV Combiner Box is usually installed between the PV array and the inverter, and is an important part of the PV power generation system. ???. What Does a PV Combiner Box Do? The role of the PV Combiner Box can be illustrated by a specific example: Suppose you are building a photovoltaic power plant, which consists of 500 photovoltaic panels.



Solar combiner boxes are vital for solar panel systems with several solar strings. But with projects that have just a few strings (particularly home solar projects), you do not necessarily need a combiner box. but they differ in their operating principles, efficiency, costs, and environmental impact. This comprehensive article will delve

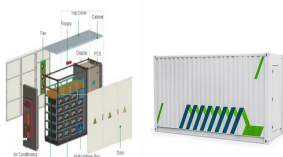
PRINCIPLE OF PHOTOVOLTAIC PANEL COMBINER BOX



VFD/Motor Control Panels. Lighting Control Panels. Instrument Racks/Telecommunication Panels. Staging. PV Combiner Box. Protection Panels. Buildings & Skids. CSA approved 1000VDC & 1500VDC Panelflex PV system Combiner Boxes. Combiner Boxes can be customized to fit the solar integrators' specific needs. Some features include: CSA approved



The cutting-edge technology utilized in the PV combiner box carries adequate protection to ensure a seamless flow of electricity. To facilitate the secure inflow of current from each solar panel, each fuse box has a capacity of 10A/250VDC, irrespective of the type of solar panel.



3 ? 1) What is a PV Combiner Box? "A solar combiner box or PV combiner box is a device that is used to minimize the number of connections made in a solar panel system for easy ???



At its core, a solar combiner box is a vital component of a solar photovoltaic (PV) system responsible for consolidating and distributing the electrical output from multiple solar panels. This junction box, typically weatherproof and designed for outdoor installation, acts as the central hub where the direct current (DC) power generated by solar panels comes together ???



A PV combiner box is the key to housing a joint connection between various panels and the entire system's inverter. Think of this box as the heart of a seamless solar energy solution. What is the Purpose of the PV Combiner Box? Photovoltaic combiner boxes play a crucial role in solar panel systems, especially in larger installations. They

PRINCIPLE OF PHOTOVOLTAIC PANEL COMBINER BOX



Principle. For photovoltaic stacked photovoltaic power generation systems, in order to facilitate maintenance, improve reliability and operability, it is generally necessary to add a DC combiner device between the photovoltaic modules and the power consumption side.



The working principle of combiner boxes is simple ??? they combine the DC output of multiple solar panels into a manageable circuit. This combined output is then fed to an inverter, which converts the DC power into usable alternating current ???



The working principle of the PV combiner box can be imaginatively understood as the "current collection station", and its main task is to unify the management and distribution of the power generated by the ???



The Solar combiner box in the photovoltaic power generation system is a wiring device that ensures orderly connection and convergence of photovoltaic modules. relays, and fuses. The primary function of the solar combiner box is to centralize and parallel multiple solar panel currents to form a direct current convergence. Then through AC



Weidmuller has over 11 years" experience in PV technology and installation, offering comprehensive expertise, a vast range of services and a global presence with over 162,000 installed Weidm?ller combiner boxes - with approximately 70 ???

