

PRISM ENERGY BENIN



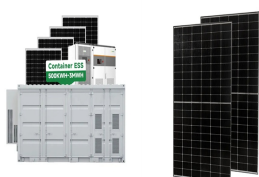
Who is prism energy? Headquartered in Aberdeen, Prism Energy provides Industry-leading Project Management solutions to the energy sector and beyond. Project Management System The ???Prism Apps??? project management software solution incorporates various modules to support your project teams.



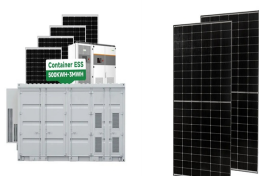
How can Benin increase local production? However, the government of Benin is making serious efforts to increase local production through national projects, specifically the Solar Energy Promotion Project (PROVES) and the Renewable Energy Development Program (PRODERE). The principal RE sources in Benin are hydro energy, biomass energy, wind energy and solar energy.



Why is Benin reliant on electricity imports? Benin is reliant on electricity imports for a significant share of its energy supply. Reform programmes, including plans for electrification, have been put in place in the country, where only 30% of the population had access to electricity in 2017.



What is Benin's current energy situation? This section provides information on Benin's current energy situation with energy demand-and-supply scenarios. According to the International Renewable Energy Agency (IRENA), 41% of Benin's population currently have access to electricity.



Which institutions are working to provide access to affordable energy in Benin? Several institutional frameworks in the energy sector in Benin are working to provide access to affordable energy in the country. The ME is the biggest institution of the energy sector, responsible for the management of the energy sector and in charge of the implementation of RE projects.

PRISM ENERGY BENIN



What is the energy mix in Benin? Energy in Benin has a diverse energy mix and takes several forms including: solar, wind, hydropower, biomass, fossil resources, and mineral resources. Out of this energy mix, about 60% of energy comes from biomass. Benin is also dependent on energy imports from Ghana and C?te d'Ivoire.



"Prism is easier to use and clearer than managing risks by spreadsheet." "The visibility of our risks improved massively using Prism and enabled us to be consistent in our management of the project." "Prism is a powerful but cost ???



Benin: Many of us want an overview of how much energy our country consumes, where it comes from, and if we're making progress on decarbonizing our energy mix. This page provides the data for your chosen country across all of the key ???



Prism Energy specialise in these projects and we have successfully delivered multiple isolation tool projects using our internally developed project process. Pipeline inspection With decades of experience operating on pipeline projects ???



Vous n"?tes pas sans savoir, que la mise en place d'un syst?me solaire photovolta?que est soumise ? des r?glementations et des normes sp?cifiques.. Afin de respecter ces normes, nos ?quipes de poses sont r?guli?rement ???



Prism Energy Services is a leading provider of energy management solutions based in New England. With over 20 years of experience, Prism offers comprehensive energy efficiency ???

PRISM ENERGY BENIN



Benin's energy sector has set the vision of being self-sufficient in energy, allowing everyone in the country to have access to modern energy in quantity, quality and at a lower cost, to ensure universal access to clean ???