

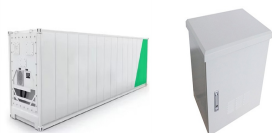
RATED CHARGING POWER OF ENERGY STORAGE LITHIUM BATTERY



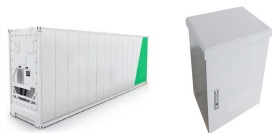
What is the difference between rated power capacity and storage duration? Rated power capacity is the total possible instantaneous discharge capability of a battery energy storage system (BESS), or the maximum rate of discharge it can achieve starting from a fully charged state. Storage duration, on the other hand, is the amount of time the BESS can discharge at its power capacity before depleting its energy capacity.



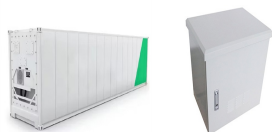
What is rated energy storage capacity? Rated Energy Storage Capacity is the total amount of stored energy in kilowatt-hours (KWh) or megawatt-hours (MWh). It can also be expressed in ampere-hours (e.g., 100Ah @ 12V). This capacity determines the amount of time storage can discharge at its power capacity before exhausting its battery energy storage capacity.



How long can a battery store and discharge power? The storage duration of a battery is determined by its power capacity and usable energy capacity. For example, a battery with 1MW of power capacity and 6MWh of usable energy capacity will have a storage duration of six hours.



How efficient is a lithium ion battery? For example, if a lithium-ion battery has an energy efficiency of 96 % it can provide 960 watt-hours of electricity for every kilowatt-hour of electricity absorbed. This is also referred to as round-trip efficiency. Whether a BESS achieves its optimum efficiency depends, among others, on the Battery Management System (BMS).



What are the key technical parameters of lithium batteries? Learn about the key technical parameters of lithium batteries, including capacity, voltage, discharge rate, and safety, to optimize performance and enhance the reliability of energy storage systems. Lithium batteries play a crucial role in energy storage systems, providing stable and reliable energy for the entire system.

RATED CHARGING POWER OF ENERGY STORAGE LITHIUM BATTERY



Why are lithium batteries important for energy storage systems? Lithium batteries play a crucial role in energy storage systems, providing stable and reliable energy for the entire system. Understanding the key technical parameters of lithium batteries not only helps us grasp their performance characteristics but also enhances the overall efficiency of energy storage systems.



The EnerC+ container is a modular integrated product with rechargeable lithium-ion batteries. It offers high energy density, long service life, and efficient energy release for over 2 hours. Rated Charging Power. ???



SCU provides 500kwh to 2mwh energy storage container solutions. Power up your business with reliable energy solutions. Say goodbye to high energy costs and hello to smarter solutions with us. Rated Power (kW) 100: ???



12 / 24 / 48 Volt nominal batteries; 200 Volt solar input; 100 Amp battery charging; Integrated 30 Amp load control; Warranty: 5 years; Battery pairing: Morningstar has an Energy Storage Partner program (ESP), which ???



This paper presents a scalable data-driven methodology that leverages deep reinforcement learning (DRL) to optimize the charging of battery units within smart energy storage systems ???

RATED CHARGING POWER OF ENERGY STORAGE LITHIUM BATTERY



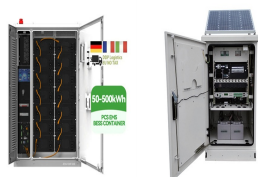
In other words, the MW rating is about the "speed" of energy delivery, while the MWh rating is about the "distance" or duration of energy delivery. In terms of their importance in the design and operation of a BESS, ???



Battery capacity is a critical indicator of lithium battery performance, representing the amount of energy the battery can deliver under specific conditions (such as discharge rate, temperature, and cutoff voltage), ???



Definition. Key figures for battery storage systems provide important information about the technical properties of Battery Energy Storage Systems (BESS). They allow for the comparison of different models and offer important clues for ???



Things to consider about the Enphase 5P. The downside is, of course, lower capacity means less availability for power if the grid goes down. But, if you live in an area with a relatively stable grid that isn't prone to long ???



Grid-scale battery costs can be measured in \$/kW or \$/kWh terms. Thinking in kW terms is more helpful for modelling grid resiliency. A good rule of thumb is that grid-scale lithium ion batteries will have 4-hours of ???

RATED CHARGING POWER OF ENERGY STORAGE LITHIUM BATTERY



Redox flow batteries also offer greater flexibility to independently tailor power rating and energy rating for a given application than other electrochemical means for storing electrical energy. Redox flow batteries are suitable for energy ???



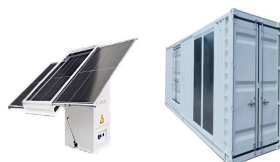
Lithium-ion (Li-ion) batteries are mostly designed to deliver either high energy or high power depending on the type of application, e.g. Electric Vehicles (EVs) or Hybrid EVs ???



A 0.5C or (C/2) charge loads a battery that is rated at, say, 1000 Ah at 500 A so it takes two hours to charge the battery at the rating capacity of 1000 Ah; A 2C charge loads a battery that is



The way the power capability is measured is in C's. A C is the Amp-hour capacity divided by 1 hour. So the C of a 2Ah battery is 2A. The amount of current a battery "likes" to have drawn from it is measured in C. The higher ???



Lithium-ion batteries. The energy density of lithium batteries has increased in recent years, as manufacturers have experimented with different combinations of materials in the cathode and anode. Costs have fallen sharply ???

RATED CHARGING POWER OF ENERGY STORAGE LITHIUM BATTERY



Benefits of Battery Energy Storage Systems. Battery Energy Storage Systems offer a wide array of benefits, making them a powerful tool for both personal and large-scale use: Enhanced Reliability: By storing energy ???



??? High C-Rates (1C) are suitable for scenarios requiring immediate power delivery and quick response times, albeit with increased stress on the battery cells. ??? Lower C-Rates (0.5C, 0.25C) are preferred for applications ???



Understanding battery storage specifications is crucial for making informed decisions when choosing an energy storage solution. From lithium-ion batteries and modules to power ratings, capacity, and certifications, each ???