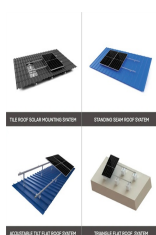


# REASONS FOR STARTING THE ENERGY STORAGE MOTOR



In this blog, we'll delve into the methods used to reduce starting current, ensuring efficient and smooth motor operation. Starting current, also called inrush current, is the brief surge of electricity that flows through a motor ???



Download scientific diagram | Diesel-electric locomotive architectures based on the type of current used in the main generator and the traction motors: (a) dc-dc, (b) ac-dc and (c) ac-ac. from



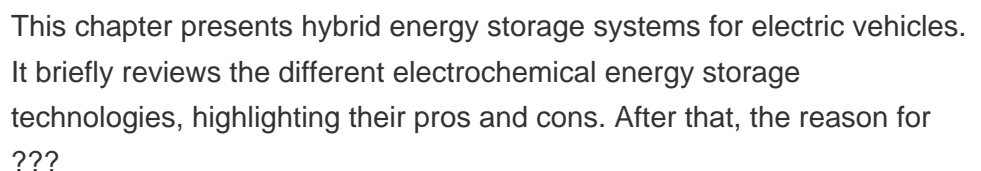
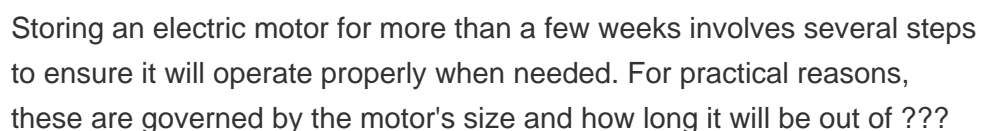
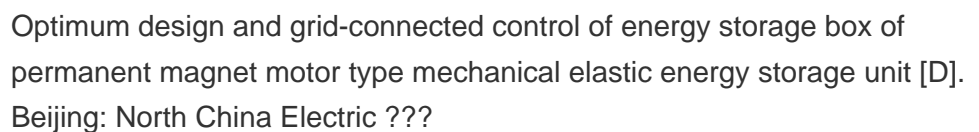
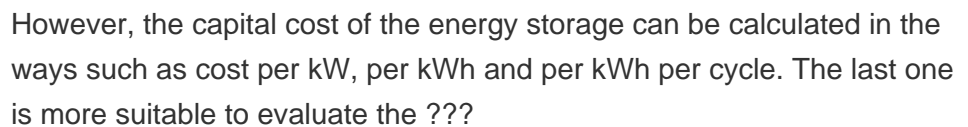
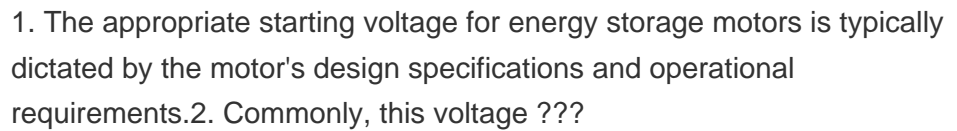
The results are presented of a computer study of the synchronous starting of a synchronous pumped storage generator motor from a generator having approximately 15 percent of the motor's capacity



the starting current is reduced, and reduce the size of a lead battery. PWM control allows you to maintain the operating voltage of a starter motor under various operating conditions and ???



Induction motor (IM) startup can cause voltage dip disturbances and is detrimental to the stable operation of industrial islanded microgrids. Firstly, this study investigates the ???



# REASONS FOR STARTING THE ENERGY STORAGE MOTOR



Based on SCI, a strategy to determine the starting sequence of multiple IMs in the islanded microgrid is proposed to improve the quantities of IM startups and the microgrid's ???



To start and stop motors in a way that is both technically and energy efficient, several starters and starting methods are advisable. The commonly-used star-delta starter is often given preference due to its low ???



Smooth Start: The reduced voltage in star configuration ensures a soft start, which minimizes the mechanical and electrical stress on the motor.; Prevents Overloading: By lowering the initial ???



When considering pumped storage systems, one of the most frequent problems is related to the pump's motor starting. In fact, a careful evaluation of available starting methods ???



Motor Starting Currents. High inrush and run-up currents during starting is a challenge when designing large induction motors. High start-up currents can cause problems such as voltage dipping below acceptable levels ???

# REASONS FOR STARTING THE ENERGY STORAGE MOTOR

---



This enables starting the motor in the star configuration which has a low start-up current, and then switching to the delta configuration after the motor has attained the required speed. The method is more complex than the DOL ???