

SANWEI ELECTRONIC FLYWHEEL ENERGY STORAGE



Flywheel energy storage systems (FESS) employ kinetic energy stored in a rotating mass with very low frictional losses. Electric energy input accelerates the mass to speed via an integrated motor-generator. The energy is discharged by drawing down the kinetic energy using the same motor-generator. The amount of energy that can be stored is



The key technologies underpinning an FESS include flywheel rotor technology, support bearing technology, integrated electric motor/generator technology, bidirectional energy converter technology, vibration control for the electromagnetic bearing??flywheel rotor system, and vacuum chamber technology.



Flywheel energy storage is reaching maturity, with 500 flywheel power buffer systems being deployed for London buses (resulting in fuel savings of over 20%), 400 flywheels in operation for grid



The flywheel energy storage operating principle has many parallels with conventional battery-based energy storage. The flywheel goes through three stages during an operational cycle, like all types of energy storage systems: The flywheel speeds up: this is the charging process. Charging is interrupted once the flywheel reaches the maximum



Flywheel energy storage system (FESS) is one of the most satisfactory energy storage which has lots of advantages such as high efficiency, long lifetime, scalability, high power density, fast

SANWEI ELECTRONIC FLYWHEEL ENERGY STORAGE



Fig. 1 has been produced to illustrate the flywheel energy storage system, including its sub-components and the related technologies. A FESS consists of several key components: (1) A rotor/flywheel for storing the kinetic energy. (2) A bearing system to support the rotor/flywheel. (3) A power converter system for charge and discharge, including



A flywheel energy storage (FES) A suitable power electronic conversion arrangement is required for a steady DC supply. Among the various available converters, a sinusoidal pulse width modulated (SPWM) based converter is the best option when paired with a suitable microcontroller.



Flywheel Energy Storage (FES) systems refer to the contemporary rotor-flywheels that are being used across many industries to store mechanical or electrical energy. Instead of using large iron wheels and ball bearings, advanced FES systems have rotors made of specialised high-strength materials suspended over frictionless magnetic bearings

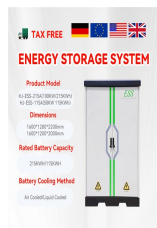


Flywheel energy storage is a strong candidate for applications that require high power for the release of a large amount of energy in a short time (typically a few seconds) with frequent charge



The ecological and sustainable energy storage. The ENERGIESTRO flywheel is the ideal storage for large solar power plants in desert areas. The VOSS project has received funding from the European Union's Horizon 2020 research and ???

SANWEI ELECTRONIC FLYWHEEL ENERGY STORAGE



In the field of flywheel energy storage systems, only two bearing concepts have been established to date: 1. Rolling bearings, spindle bearings of the & #x201C;High Precision Series& #x201D; are usually used here.. 2. Active magnetic bearings, usually so-called HTS (high-temperature superconducting) magnetic bearings.. A typical structure consisting of rolling ???



A review of energy storage types, applications and recent developments. S. Koochi-Fayegh, M.A. Rosen, in Journal of Energy Storage, 2020 2.4 Flywheel energy storage. Flywheel energy storage, also known as kinetic energy storage, is a form of mechanical energy storage that is a suitable to achieve the smooth operation of machines and to provide high power and energy ???



For different types of electric vehicles, improving the efficiency of on-board energy utilization to extend the range of vehicle is essential. Aiming at the efficiency reduction of lithium battery system caused by large current fluctuations due to sudden load change of vehicle, this paper investigates a composite energy system of flywheel???lithium battery. First, according ???



The flywheel energy storage system (FESS) can operate in three modes: charging, standby, and discharging. The standby mode requires the FESS drive motor to work at high speed under no load and has

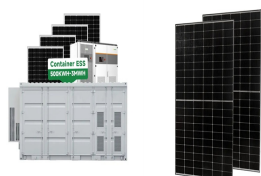


Energy storage technologies are developing rapidly, and their application in different industrial sectors is increasing considerably. Electric rail transit systems use energy storage for different applications, including peak demand reduction, voltage regulation, and energy saving through recuperating regenerative braking energy. In this paper, a ???

SANWEI ELECTRONIC FLYWHEEL ENERGY STORAGE



Flywheel Energy Storage System uses kinetic energy stored in rapidly rotating flywheels to store electrical energy. It consists of a flywheel, motor/generator, power electronics, magnetic bearings, and external inductor. The motor charges the flywheel by accelerating it to high speeds and the generator discharges energy by slowing the flywheel. It is well suited for providing power for ???



where q is the anti-vibration factor and $q > 0$ ($q = 0.1$ in this paper).. 2.2 DC BUS Voltage Control Based on Improved ADRC. In the urban railway system, the control of the DC bus voltage of the power supply network is crucial, which is of great significance to the safe operation of the whole system, so the ADRC control strategy with strong anti-interference performance is ???



This paper presents an overview of the flywheel as a promising energy storage element. Electrical machines used with flywheels are surveyed along with their control techniques. Loss minimization



Kinetic/Flywheel energy storage systems (FESS) have re-emerged as a vital technology in many areas such as smart grid, renewable energy, electric vehicle, and high-power applications.



The literature 9 simplified the charge or discharge model of the FESS and applied it to microgrids to verify the feasibility of the flywheel as a more efficient grid energy storage technology. In the literature, 10 an adaptive PI vector control method with a dual neural network was proposed to regulate the flywheel speed based on an energy optimization ???

SANWEI ELECTRONIC FLYWHEEL ENERGY STORAGE



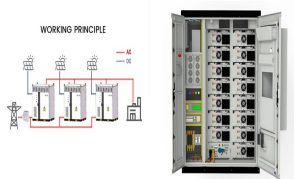
Flywheels with the main attributes of high energy efficiency, and high power and energy density, compete with other storage technologies in electrical energy storage applications, as well as in transportation, military services, and space satellites [8].



Flywheel energy storage (FES) works by accelerating a rotor (flywheel) to a very high speed and maintaining the energy in the system as rotational energy. When energy is extracted from the system, the flywheel's rotational speed is reduced as a consequence of the principle of conservation of energy; adding energy to the system correspondingly



This review presents a detailed summary of the latest technologies used in flywheel energy storage systems (FESS). This paper covers the types of technologies and systems employed within FESS, the range of materials used in the production of FESS, and the reasons for the use of these materials. Furthermore, this paper provides an overview of the ???



The cost invested in the storage of energy can be levied off in many ways such as (1) by charging consumers for energy consumed; (2) increased profit from more energy produced; (3) income increased by improved assistance; (4) reduced charge of demand; (5) control over losses, and (6) more revenue to be collected from renewable sources of energy



An overview of system components for a flywheel energy storage system. Fig. 2. A typical flywheel energy storage system [11], which includes a flywheel/rotor, an electric machine, bearings, and power electronics. Fig. 3. The Beacon Power Flywheel [12], which includes a composite rotor and an electric machine, is designed for frequency

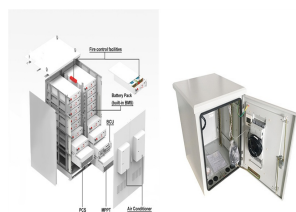
SANWEI ELECTRONIC FLYWHEEL ENERGY STORAGE



Motor/Generator Magnetic Bearing Radial Bearing Power Electronic Converter Flywheel Vacuum Pump Vacuum Chamber Figure 1. Flywheel structure. Flywheel energy storages are classified into two main groups: low-speed (rotation speed below 10,000 rpm) and high-speed (rotation speed above 10,000 rpm). R. Flywheel Energy Storage a Conceptual Study



1 Introduction. Among all options for high energy store/restore purpose, flywheel energy storage system (FESS) has been considered again in recent years due to their impressive characteristics which are long cyclic endurance, high power density, low capital costs for short time energy storage (from seconds up to few minutes) and long lifespan [1, 2].



Falcon Flywheels is an early-stage startup developing flywheel energy storage for electricity grids around the world. The rapid fluctuation of wind and solar power with demand for electricity creates a need for energy storage. Flywheels are an ancient concept, storing energy in the momentum of a spinning wheel.



II. FLYWHEEL ENERGY STORAGE SYSTEM Flywheel energy storage system (FESS) is an efficient storage, regulate and energy saving technology. In the FESS system, energy is stored in the flywheel in the form of kinetic energy of the rotating unit and emitted according to system requirements. The main components of an energy storage flywheel are shown

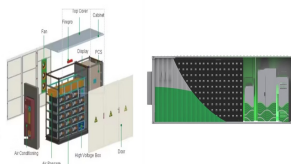


The literature written in Chinese mainly and in English with a small amount is reviewed to obtain the overall status of flywheel energy storage technologies in China. The theoretical exploration of flywheel energy storage (FES) started in the 1980s in China. The experimental FES system and its components, such as the flywheel, motor/generator, bearing, ???

SANWEI ELECTRONIC FLYWHEEL ENERGY STORAGE



Finding efficient and satisfactory energy storage systems (ESSs) is one of the main concerns in the industry. Flywheel energy storage system (FESS) is one of the most satisfactory energy storage which has lots of advantages such as high efficiency, long lifetime, scalability, high power density, fast dynamic, deep charging, and discharging capability. The ???



Piller offers a kinetic energy storage option which gives the designer the chance to save space and maximise power density per unit. With a POWERBRIDGE???, stored energy levels are certain and there is no environmental disposal issue to manage in the future. Importantly, a POWERBRIDGE??? will absorb energy at the same rate as it can dissipate.



Thanks to the unique advantages such as long life cycles, high power density, minimal environmental impact, fast response and voltage stability, flywheel energy storage systems (FESS) is gaining attention recently. This article provides an overview of foreign developments of FESS used at autonomous energy systems with renewable energy sources.