

# SECONDLIFESTORAGE COM YEMEN



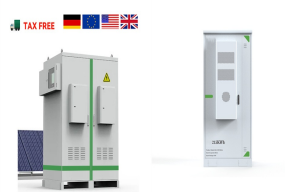
Warning: The information in this thread was obtained from various sources on the Internet, including any datasheets linked below, and is provided for reference only is not guaranteed to be accurate. To prevent fire or personal injury, never charge or discharge a cell before verifying the information yourself using the original specifications sheet provided by the ???



Warning: The information in this thread was obtained from various sources on the Internet, including any datasheets linked below, and is provided for reference only is not guaranteed to be accurate. To prevent fire or personal injury, never charge or discharge a cell before verifying the information yourself using the original specifications sheet provided by the ???



(this chat is not directly affiliated with SecondLifeStorage; VALID email req'd) Reactions: Amish\_Fighter\_Pilot and 100kwh-hunter. Geek Member. Joined Aug 15, 2017 Messages 920. Jul 25, 2019 #4 If you do plan to use oil, it has to be mineral oil. Organic oils will eventually go rancid. Apparently the smell of rancid oil is horrendous.



Question about the breakers, can I parallel breakers? Example, using two 50 amp breakers in parallel to get 100 amp breaking capacity. I have been looking at potential power draw, and if I do the math 3000W @ 24V Nominal would require a 125 amp power draw, And if I wanted to do 6000w it would be 250 amp power draw.



Warning: The information in this thread was obtained from various sources on the Internet, including any datasheets linked below, and is provided for reference only is not guaranteed to be accurate. To prevent fire or personal injury, never charge or discharge a cell before verifying the information yourself using the original specifications sheet provided by the ???

# SECONDLIFESTORAGE COM YEMEN



Warning: The information in this thread was obtained from various sources on the Internet, including any datasheets linked below, and is provided for reference only is not guaranteed to be accurate. To prevent fire or personal injury, never charge or discharge a cell before verifying the information yourself using the original specifications sheet provided by the ???



(this chat is not directly affiliated with SecondLifeStorage; VALID email req'd) AZ\_Tekkie Member. Joined Oct 8, 2016 Messages 168. Mar 18, 2017 #12 They all have little pots on the back to adjust the voltage. All after adjusting match the voltage of my multimeter. I haven't noticed and problems with them pulling packs out of balance.



Warning: The information in this thread was obtained from various sources on the Internet, including any datasheets linked below, and is provided for reference only is not guaranteed to be accurate. To prevent fire or personal injury, never charge or discharge a cell before verifying the information yourself using the original specifications sheet provided by the ???



Bonjour ! nouveau ici, je suis prof en ?cole d'ing?nieur, j'ai une petite formation initiale en ?lectronique appliqu?e, un peu d'info mais pas grand chose. Cela fait plus d'un projet que je r?f?chi pour batterie, afin de recycler des 18650. ???



My PowerShelf project has come a long way since I started collecting 18650 cells about 2 years ago. This is the latest status (April 2020):  
Background: I've had my grid-tied system with feed-in tariff installed a few years ago, which unfortunately is nearly useless on cloudy days and entirely

# SECONDLIFESTORAGE COM YEMEN



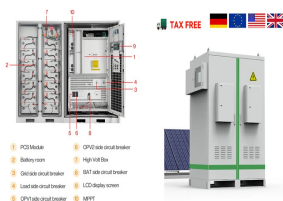
Warning: The information in this thread was obtained from various sources on the Internet, including any datasheets linked below, and is provided for reference only is not guaranteed to be accurate. To prevent fire or personal injury, never charge or discharge a cell before verifying the information yourself using the original specifications sheet provided by the ???



(this chat is not directly affiliated with SecondLifeStorage; VALID email req'd) 1. 1958 greyhound Member. Joined May 13, 2017 Messages 263. Jul 21, 2017 #16 Have you spot welded a fuse wire yet ? One electrode on the wire and one electrode on the battery. T. tatus1969 New member. Joined Jul 16, 2017 Messages 9.



I am constructing my second powerwall 100p14s, initial one up and running for 2 years without much issues. Using nine 280W rooftop solar panels and a PCM 60X charger, and inexpensive night grid power (\$0.15 per KWhr) to charge up, and using a Schneider Conext 4048SW inverter. Electrician has



(this chat is not directly affiliated with SecondLifeStorage; VALID email req'd) Reactions: 18650destroyer and (deleted member) raccoon New member. Joined Jul 20, 2019 Messages 3. Jul 20, 2019 #7 I just pulled some of these out of a laptop battery pack. LGABB4185.Gray wrapper.Came off the charger at 2564 mAh. Wish I knew which model pack ???



Warning: The information in this thread was obtained from various sources on the Internet, including any datasheets linked below, and is provided for reference only is not guaranteed to be accurate. To prevent fire or personal injury, never charge or discharge a cell before verifying the information yourself using the original specifications sheet provided by the ???

# SECONDLIFESTORAGE COM YEMEN



(this chat is not directly affiliated with SecondLifeStorage; VALID email req'd) Reactions: wim. zag2me Member. Joined Sep 11, 2017 Messages 114. Jan 11, 2018 #17 Yep i've been pretty much copying Pete's setup. Just at 7s . See My DIY PowerWallBuild here. Wattsup Member. Joined Feb 19, 2017



Not a reclaimed cell but I thought I'd post this anyways, it's got a good price per kWh for new cells (\$183/kWh for qty 200 including shipping from China, or \$5/cell with free shipping on eBay in the US, as low as \$4/cell for 200 qty).



From what I gather from these two articles, is there was a possible firmware update that caused the system to do a location validation. This in turn disabled the inverters if they resided in the UK, US, Canada and Pakistan.



NOTE! My links supplied in this message may be affiliated with Ebay and by clicking on them you agree on the terms. SUBSCRIBE: /Forum system setup/ My webpage Diy Tech & Repairs Current: 10kW Mpp Hybrid | 4kW PIP4048 | 2xPCM60x | 100kWh LiFePo4 | 20kWh 14s 18650 | 66\*260W Poly | ABB S3 and S5 Trip breakers Upcoming: 14S ???



(this chat is not directly affiliated with SecondLifeStorage; VALID email req'd) BEN7982 New member. Joined Oct 13, 2023 Messages 29. Dec 1, 2023 #16 Hi Boron, sorry for confusion. The pic I posted earlier is an old version. Since I did not like the flex on the middle cells (row 3) I made it 6x4 having now one M4 bolt directly tensioning 2x2



(this chat is not directly affiliated with SecondLifeStorage; VALID email req'd) C. Charles Francis Speakman Member. Joined May 6, 2017 Messages 60. Apr 4, 2018 #3 Korishan said: I don't why you couldn't. Isn't there just a Pos/Neg Battery connections on the Inverter? If so, it

# SECONDLIFESTORAGE COM YEMEN

---

doesn't care what the battery chemistry is as long as the voltages

# SECONDLIFESTORAGE COM YEMEN

---



(this chat is not directly affiliated with SecondLifeStorage; VALID email req'd) Reactions: thunderheart. BlueSwordM Member. Joined Jul 5, 2017 Messages 423. Mar 31, 2018 #3 That would only be useful for internal resistance ???