

SERBIA 10 24 KWH LITHIUM BATTERY



What is a lithium Valley 10kwh battery? The Lithium Valley 10kWh Battery offers high-efficiency energy storage with reliable performance. Designed for seamless solar integration, it provides a sustainable, eco-friendly power solution for homes, businesses, or electric vehicles.



What are the features of Volta 10 kWh lithium-ion battery? Some of the features of the Volta 10.24 KWH Lithium-Ion Battery are: It has a nominal energy of 10.24 KWH and a nominal voltage of 51.2 VDC. It has a capacity of 200 AH and a cell type of LFP (Lithium Iron Phosphate), which is safer and more stable than other lithium-ion chemistries.



What is the operating voltage range of a lithium battery? The operating voltage range of 43.2V to 58.4V ensures compatibility with a wide range of applications and devices, making it an ideal choice for a variety of uses. This lithium battery is built to withstand the test of time with its high-quality construction and robust design.



How do I ship the fortress power lithium battery? This battery can only ship via freight truck. If you have any questions about shipping methods, please email us or call us at 800 383-0195. The Fortress Power High-Performance fortress Lithium Battery is easy to install, safe, and consistently reliable. It provides the lowest lifetime energy cost for both new solar customers and retrofit customers.



What is a fortress lithium battery? Fortress Lithium Battery has the industry's most advanced technology with a Battery management System that integrates multilevel safety concepts. High Performance: Large power capacity, with a fast charging and continuous discharge power, creating an 98% round-trip conversion.

SERBIA 10 24 KWH LITHIUM BATTERY



What is the charge voltage of a lithium ion battery? It has a standard charge voltage of 58.4 VDC and a discharge cut-off voltage of 44.8 VDC, which ensures optimal battery performance and longevity. It has a design life of more than 6000 cycles at 80% DOD and can operate at a temperature range of -20°C to 60°C.



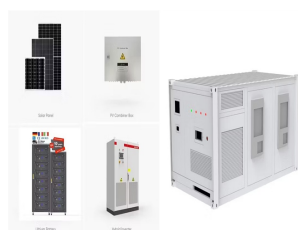
5 kVA inverter and 5 kWh Lithium battery is sufficient enough to cater to home power needs to run 6-10 lights, 3-4 fans, 1 television, 1 refrigerator, 1 Grinder, Juicer machine, along with charging a couple of mobiles and laptop. The lithium battery has a capacity to store 5,000-watt power inside it.



battery modules that are connected in series to achieve a . usable capacity of 5.1 to 12.8 kWh. Additionally, direct parallel connection of up to 3 identical Battery-Box Premium HVS allows a maximum capacity of 38.4 kWh. Ability to scale by adding HVS modules or parallel HVS stacks later. BATTERY-BOX PREMIUM HVS. BATTERY-BOX . PREMIUM HVS / HVM



Get ready to power your life with 10kWh lithium ion battery of energy storage! Our wall-mounted battery is UL 1973 Listed, with 10-year warranty. This 10 kWh battery is compatible with most 48V inverters on the market and is already listed with Victron, Studer inverters.



Fortress 48Volt 10kWh LFP-10 Lithium Battery The LFP-10 is a 48 Volt Lithium Iron Phosphate Battery form Fortress Power. It's 200Ah super charge capacity can store power upto 10kWh. The advanced Lithium Ferro Phosphate (LFP) technology operates a wider temperature range to provide the most dependable performance. Its



Day or Night, 10KWH power wall ALWAYS HAVE BACKUP POWER. The EG Solar Lithium Battery is a 10 kWh 48V Lithium Iron Phosphate (LFP) Battery with a built-in battery management system and an LCD screen that integrates and displays multilevel safety features for excellent

SERBIA 10 24 KWH LITHIUM BATTERY

performance. The EG Solar Lithium Battery is maintenance-free and easy to integrate with ???

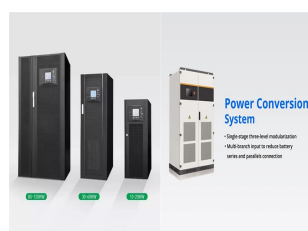
SERBIA 10 24 KWH LITHIUM BATTERY



Introducing the SUNSYNK 10kW 200Ah LiFePo4 Lithium Ion Battery ??? the powerhouse solution to elevate your energy game! Designed for durability, efficiency, and sustainability, this battery is a game-changer for both residential and commercial applications.



Cobalt Free Lithium Iron Phosphate (LFP) Battery: Maximum Safety, Life Cycle, and Power; Total Battery Capacity: 10.24 kWh; Number of Modules: 4 units; Battery Module: HVS (2.56 kWh, 102.4 V, 38 kg) Lithium iron phosphate technology (LFP) Nominal Voltage: 409 V; Max Output Current: 25 A; Peak Output Current: 50 A for 5 seconds;



Fortress Battery is the best Lithium Iron Batteries build keeping the highest standard in mind to ensure maximum safety performance and durability for PV arrays. Total Energy (kWh) 10.24: 15.36: Max. Charge Current (Continuous) [A] 100: 100: Max. Discharge Current (Continuous) [A] 100: 100: Max. Pulse Current (for 10 sec) [A] 200: 200



Battery Type Lithium ion phosphate Battery Brand GSL ENERGY Model No GSL-051100A-B-GBP2, GSL-051200A-B-GBP2, GSL-051280A-B-GBP2 Rated voltage 51.2V Capacity 100,200,280Ah Size (mm) / Size (inch) L*W*H 720*550*200 / 28.3*21.6*7.8 Weight 102.5kg/225.97 lbs Application Home ESS, Solar ESS, Solar off grid backup system, Solar ???



This high-performance BSLBATT 48V 100Ah lithium ion battery has a large power capacity, with fast charging and continuous discharge power, providing 98% efficiency. What we can do for you. Contact Form. 10.24 - 153.6 kWh | 48V Solar Battery. Ultra-thin LiFePO4 Wall Mounted Solar Battery 10kWh for Home.

SERBIA 10 24 KWH LITHIUM BATTERY



This high-performance lithium-ion battery is designed for those looking to go off-grid and embrace a sustainable lifestyle. Perfect for your next solar installation or UPS system, the Dyness Powerbox Pro offers reliable power to run your appliances efficiently. Dyness 10.24Kwh Powerbox Pro 200Ah Battery key features and advantages:



Battery Type Lithium ion phosphate Battery Brand GSL ENERGY Model No GSL-051100A-B-GBP2, GSL-051200A-B-GBP2, GSL-051280A-B-GBP2 Rated voltage 51.2V Capacity 100,200,280Ah Size (mm) / Size (inch) L*W*H 720*550*200 / ???



EITAI Power Wall Lithium Lifepo4 51.2v Home Battery 48V 100Ah 200Ah 5Kwh 10Kwh 20Kwh Batteries for Solar Energy Systems. -Wall Battery. Wall-mounted / ground mounted. OEM/ ODM supported. Parallel up-to 15pcs. Flexible capability options form 9.6 kWh / 10.2kWh. Excellent Safety of cobalt free LiFePO4 battery. Easy installation with modular



10 kw inverter and battery for commercial use like show rooms, offices, big homes, powered by lithium battery and wall mount inverter. Appliances Applications Installation Video Main products Inverter - Fusion 5 KVA/48v - 2 nos. Battery - Lithium 5 kWh (100 Ah / 48 Volts) - 2 nos. Backup time Load 5000 W 4000 W 3000 W 2000 W 1000 W Duration



Get ready to power your life with 10kWh lithium ion battery of energy storage! Our wall-mounted battery is UL 1973 Listed, with 10-year warranty. This 10 kWh battery is compatible with most 48V inverters on the market and is already ???

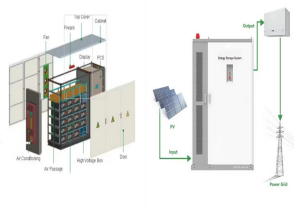


Lemoen: Battery Lithium Ion ECO14 14.3KWH 51.2V 280AH (Rack Mount & Wall Mount) (LemoenECO14) R 32,000.00 Excl. VAT; Plastic Battery Box Fits x 2 Lead Acid / Gel 100Ah Batteries (Colour: Black) (PBBOX) R 900.00 Excl. VAT; Solax: Battery Lithium Ion 5.8KWH 100V-131V Incl

SERBIA 10 24 KWH LITHIUM BATTERY

BMS (SOL-T58-INCLBMS)

SERBIA 10 24 KWH LITHIUM BATTERY



9.6 kWh LG Chem Lithium Ion Home Battery RESU10H-Prime. LG Chem. \$8,500.00. The LG Chem RESU10H-Prime is a 9.6 kWh, 400V home battery designed for daily cycle use that re-charges with electricity generated from PV solar panels or utility grid. The LG Chem Home Battery can provide safe power on-demand, or reliable backup if the



10 kw inverter and battery for commercial use like show rooms, offices, big homes, powered by lithium battery and wall mount inverter. Appliances Applications Installation Video Main products Inverter - Fusion 5 KVA/48v - 2 ???



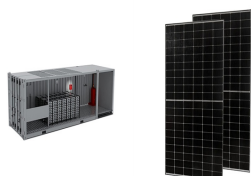
Green Bank Solar LiFePO4 20 KWH lithium battery 48V 400AH ??? WG48400E 6500 cycles \$ 14,190.00 Original price was: \$14,190.00. \$ 12,980.00 Current price is: \$12,980.00. DETAILS. The Lithium Ion battery is going to charge much faster than traditional batteries. For example, traditional Lead Acid Batteries will need a solid 8 hour charge when



kWh lithium-ion battery??? is a powerful, long-lasting lithium-ion battery on the South African market. This 48v 200Ah lithium ion battery is made with high-quality lithium phosphate, and it's designed to offer low internal resistance with ???



?-? Experience-- More than 16 years specialized in lithium battery, leaders of lithium lifepo4 battery.. ?-? Certification-- UL 9540, UL 1973, CE, MSDS, UN38.3, ISO and IEC from national center for quality supervision and Inspection of ???

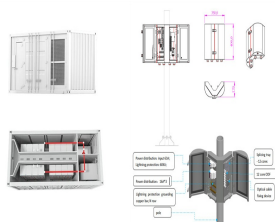


The lithium-ion system uses LiFePO4 as the cathode material and has an ambient operating temperature range of -20 C to 55 C. Bslbatt unveils 10.24 kWh battery for residential PV ??? Breaking

SERBIA 10 24 KWH LITHIUM BATTERY



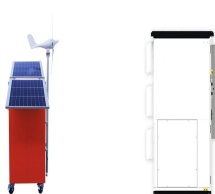
Incorporating the Lithium Valley 10.24 kWh Battery into your energy system means choosing efficiency, reliability, and sustainability. With seamless solar integration and exceptional performance, it's time to take control of your ???



Fortress Battery is the best Lithium Iron Batteries build keeping the highest standard in mind to ensure maximum safety performance and durability for PV arrays. Total Energy (kWh) 10.24: 15.36: Max. Charge Current ???



The price of a 10 kWh lithium-ion battery may vary depending on several factors, such as brand, quality, and additional features. We encourage you to check our website or reach out to our sales team for the most up-to-date pricing information. Rest assured, our batteries are designed to deliver superior performance, durability, and efficiency



Coremax 10 kwh battery backup bank is a 48v wall mounted solar battery storage. Built in prismatic Lithium ion battery (LiFePo4 16S). This 48 v 200 Ah built in High quality BMS possible to communication with different brand inverters by RS485 or CAN. This 10kw powerwall included smart BMS and built in high quality BMS. A resistor is also built



Explore how the 10kWh Energy Storage Lithium Battery facilitates peak shaving, demand response, and uninterrupted power supply, providing greater control over energy usage and reducing reliance on the grid. High quality lithium iron phosphate cells. Proven Li-ion battery management solutions. Easy to install. Supports wall or floor mounting

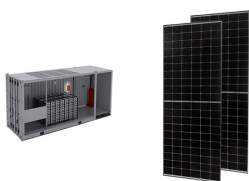


LFP is proven to be one of the safest Lithium technologies in the industry. Easy to Install: Fortress compact design saves space and can be conveniently installed. Specifications: Total Energy: 10.24 kWh; Nominal Voltage: 51.2(48)V; Voltage ???

SERBIA 10 24 KWH LITHIUM BATTERY



kwh lithium battery Documents and Datasheet. Look into the technical specifications of the Dyness 10.24kwh lithium battery using our descriptive Datasheet. This document provides an in-depth look at the product's features, functionalities, and technical attributes. 10.24Kwh Powerbox Pro datasheet. 10.24Kwh Powerbox Pro User Manual.



Introducing the powerful and reliable Elleyhill Power 10.24 kWh lithium battery. With a deep discharge capability of up to 90%, this battery is designed to provide extended power supply for your residential or commercial needs. At a nominal ???



The BSLBATT solar power wall battery is a 10 kWh 48V Lithium Iron Phosphate (LFP) Battery with a built-in battery management system and an LCD screen that integrates and displays multilevel safety features for excellent performance. ???



Green Bank Solar LiFePO4 10 KWH lithium battery 48V 200AH ???
WG48200E 6500 cycles. Green Bank Solar LiFePO4 10 KWH lithium battery \$ 5,500.00 Original price was: \$5,500.00. \$ 4,950.00 Current price is: \$4,950.00. Shipping charges 385



NEXT-GEN LITHIUM UPGRADES FEATURING. IP65+ Protection Ratings; CANBus Communications; Automatic Self-Heating; Our all new ETHOS battery system features a fully stackable and modular design, equipped with its own control box, in-depth LED display, and mounting system. (10.24 kWh) and 3-stack (15.36 kWh) configurations, with the ability