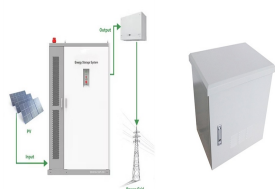
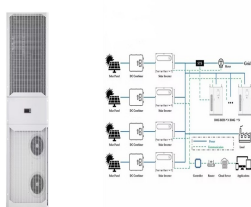


SINOMA INTERNATIONAL ENERGY STORAGE



CBMI is an affiliate of Sinoma International Engineering Co., Ltd, whose senior company is China Sinoma Group. CBMI's head quarter is located in Tangshan, Hebei Province, with branch office in Beijing. power generation, water ???



"We covered a wide range of important areas of mutual interest, going into significant depth on each of the agenda items. The expertise Sinoma has developed in the decarbonization of mining practices with full ecological ???



SINOMA International Engineering Co., Ltd. ("SINOMA International") is the technology and engineering platform under the Fortune Global 500 Group - China National Building Material Group Co., Ltd. It is also ???

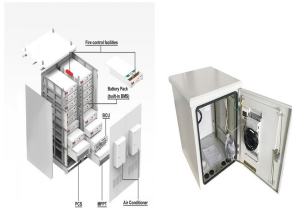


Sinoma International Engineering Co.,Ltd. 2005-04-12 ("???"), ???



Sinoma (Yichang) Energy Conservation New Material Co., Ltd., a member unit of China National Building Material Group Co., Ltd. and a Holding Co., Ltd. subordinate to Sinoma Energy Conservation Ltd. (stock code: 603126), is a ???

SINOMA INTERNATIONAL ENERGY STORAGE



In addition to the WHR business in traditional cement kilns, Sinoma-EC has been committed to the expansion of energy-saving industries in clean energy fields such as biomass ???



SINOMA EC International Investment Ltd. has flexible and various business model, till now has invested more than 21 WHR projects in China and abroad. designing and setting up an energy storage system with suitable ???



China's Sinoma EC International has signed an agreement to construct a 300 MW solar power plant in Uzbekistan's Navoi region, marking a significant step in the country's push for renewable energy development.