

SIX-DIMENSIONAL SOLAR PANELS



Solar panels also come with 72 solar cells, which are larger to accommodate the additional cells. They are around 30% larger than residential solar panels, measuring approximately 2.1m tall x 1.1m wide (or 2.3 m2).



" The Truth About Solar Panels-The book that Solar Manufacturers, Vendors, Installers and DIY Scammers Don't Want You to Read" [Paperback and Kindle Edition]. This best selling book in solar category at Amazon Paperback & Kindle Books is packed with more secrets and useful tips about solar panels that will save you a lot of time and money.



Understanding solar panel dimensions and a solar panel system's output, quality and efficiency can help you choose the right panels for your property. In general, solar panels are measured by how many cells they contain. This complete a?|



Watt Monocrystalline Solar Panel from AIMS Power is a versatile performer constructed with tempered glass and a stronger surface to protect from harsh weather conditions. The solar cells used in the panel provide high light a?|



Based on FMB's best solar panels, the average solar panel dimensions in the UK are: Solar panel size: 1,945.5mm (length) x 1,130.1mm (width) x 31.25mm (height) Weight: 23.6kg While there isn't much variation in width (six of our eight best panels measured 1,134mm) and height (all but one was 30mm tall), there were significantly different lengths.

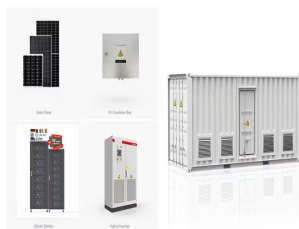


In this guide, we will review the most common solar panel sizes in 2024, the pros and cons of each type, and how to choose the right size for your solar installation. Types of Solar Panels by Size and Use Residential Solar Panels. The most common solar panels for residential use typically have

SIX-DIMENSIONAL SOLAR PANELS

dimensions of 1.65 m x 1 m and consist of 60

SIX-DIMENSIONAL SOLAR PANELS



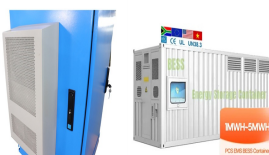
When you hear about the dimensions of solar panels, it refers to the physical size of the panel, usually in length, width, and height. While there isn't usually a large variety or a standard dimension range, we've looked at a?



The number of panels you will need depends on the desired size of your solar system (i.e., the total energy requirement). Common system sizes include 3kW, 4kW, and 5kW. For example, a typical 2kW system suitable for 1-3 people would require between 5 and 8 panels, assuming optimal positioning and efficiency and around 4 hours of sunlight per day.



A 3.5kWp system typically covers between 10 to 20m² of roof surface area, using between six and 12 panels. Solar panels on houses are considered "permitted development" and don't usually need planning permission. But there are exceptions so it's best to check with your local planning office for guidance. For example, there may be



The average domestic solar system tends to offer between 3kW and 5kW of power in total and is composed of approximately six to twelve panels altogether. Therefore, consider solar panel dimensions to get an idea of the overall scale of a proposed solar system. In terms of dimensions, domestic solar panels average 1.7 metres long, and 1 metre



There is no standard solar system size for houses in Ireland. It is simply particular to the house location and electrical needs. Some factors in determining the number of solar panels you need ring true for your estimated solar system size. Read on to find out.



The Best Solar Panels in New Zealand. The panel's dimensions are 1665 x 999 x 40 mm and weigh at just 19.6 kg. And it is engineered with fire safety properties, so as to keep your home safe at all times. Likewise, the cells can fare like normal in the harsh heat or ever-changing weather in

SIX-DIMENSIONAL SOLAR PANELS

New Zealand. As a result, you will be able to

SIX-DIMENSIONAL SOLAR PANELS



Polycrystalline solar panels, recognizable by their bluish hue, are made from multiple silicon crystals melted together. Unlike their monocrystalline counterparts, polycrystalline panels form when raw silicon is melted and cooled in a mold, resulting in various crystals in each cell. Polycrystalline Solar Panels are manufactured in 60, 72, and 96 cell configurations with a a?|



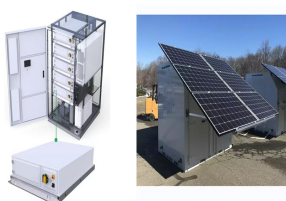
Solar panels, also known as photovoltaic (PV) cells, are devices that convert sunlight directly into electricity. Each panel is made up of many small cells that capture sunlight and, through a process called the a?|



What are the dimensions of a typical solar panel? The physical dimensions of most standard commercial panels are usually around 77 by 39 inches, with a thickness of around 1.5 inches. Final thoughts. When it comes to solar panel dimensions, it's all a?|



This equates to six to twelve panels based on energy consumption. Physical dimensions average 1.7 meters by 1 meter, and a weight of 18-20kg, are also critical for ensuring your roof can accommodate the solar array. Solar panel dimensions refer to the physical size of the solar panels in millimetres, centimetres or metres.



Regular solar panels come in 60 cell panels or 72 cell panels. Each cell is 6 x 6 inches square. 72 cell panels are taller by 12 inches. The average solar panel is 5.4 x 3.25 feet or 65 inches b 39 inches. The average weight is 40 lbs. Average depth is 1.8 inches. Portable solar panels are smaller, often half the size of regular solar arrays.

SIX-DIMENSIONAL SOLAR PANELS



Monocrystalline solar panels are made from single-crystal silicon, resulting in their distinctive dark black hue. This uniform structure, with fewer grain boundaries, ensures high purity, granting them the highest efficiency rates among photovoltaic cells, typically over 20%. Monocrystalline Solar Panels are manufactured in 60, 72, and 96 cell configurations with a a?|



Source: Mission Solar Energy Usually, residential rooftop solar panels are approximately 65 inches tall, 40 inches wide, and 2 inches thick. In feet, that would be 5.4 ft. by 3.3 ft.. Commercial solar modules are usually slightly larger in length and width only.. However, with greater technological innovations in recent years, there is no longer a clear cut distinction a?|



For further comparison, here are other high-efficiency solar panels from our data: REC Solar AA Pure-RX: This model offers a slightly higher maximum efficiency at 22.6%. Seraphim N a?|



The amount of solar cells that a panel has determines the size, the most common panel sizes are 60-cell and 72-cell. Solar panel dimensions and weight. 60-cell panels are generally around 65 inches x 39 inches. In comparison, 72-cell panels are a?|



Scottish Power installs solar panels and batteries throughout Great Britain. Solar panels cost from GBP4,972 for a 4-panel package, while batteries start from GBP3,057 if installed along with solar panels. Customers who installed their solar panels and/or battery through Scottish Power can take advantage of the SmartGen+ export tariff, paying 15p

SIX-DIMENSIONAL SOLAR PANELS



The average one-bedroom house needs six solar panels, a typical three-bedroom house requires 10 panels, and a five-bedroom house will usually need 14 panels. here are some average dimensions of typical solar a?|



Solar Panel: Product Dimensions (Per Panel) Panel Weight (Per Panel)
Canadian Solar HiKu Mono PERC Series Solar Panels: 41.26" by 76.38"
at 1.38" thick: 51.6 lbs: LG NeON R High Efficiency 66-Cell 425W Solar
Panels: 41.02" by 75.2" at 1.57" thick: 45.19 lbs:



2-3kW solar panel system (for a one- or two-bedroom home) a?? five to eight 350W panels or four to six 450W panels. 4-5kW system (for a two- or three-bedroom home) a?? 10 to 13 350W panels or eight to 10 450W panels. 6kW system (for a four- or five-bedroom home) a?? 16 x 350W panels or 13 x 450W panels. Various solar panel dimensions and



How to Find Solar Panels Dimensions in cm Depending on manufacturer and type, these dimensions are usually available in millimetres which can be easily converted to centimetres or meters. For example, a standard PV cell's dimensions in length and breadth are 156 mm respectively = $156/0.1 = 15.6$ cm.



96-cell solar panel dimensions are around 62-by-41 inches with a depth of around 1 3/5 inch. These solar panels consist of a 7-by-12-cell grid. They're growing in use because they help reduce power loss by increasing voltage. These panels have a?|



The size of a solar panel should be chosen based on factors such as available space, energy needs, and budget. Solar panels can be combined to create larger systems, and the size of the system will depend on the energy needs of the user. Choosing the right size of the solar panel

SIX-DIMENSIONAL SOLAR PANELS

is important for maximizing energy production and cost savings.

SIX-DIMENSIONAL SOLAR PANELS



What Are the Standard Solar Panel Sizes? When it comes to standard solar panel sizes, like 300w or 500w, it is essential to determine the size of a solar panel system based on these standard sizes. The dimensions of a standard solar panel, no matter how a solar panel is made, typically range from 65 inches by 39 inches, with variations in size depending on the a?|



What are standard solar panel dimensions? Standard residential solar panels typically measure 66x40 inches, while commercial solar panels are usually around 39x77 inches in size. Recently had six solar panels fitted on my house by Green Central and I couldn't have asked for a better service. In particular, I have to highlight the