

# SMILING SHARK PHOTOVOLTAIC PANEL POWER GENERATION PANEL



Discover the power of renewable energy with the Loom Solar 5kW Solar Panel - Shark 575W \* 9, 24V PV Module. This high-quality solar panel provides up to 5kW of clean, efficient energy, reducing your electricity costs and carbon ???



Sharp photovoltaic solar panels are efficient, reliable and backed by great guarantees. Proven technology. panels cover the walls of the tallest building (122 m) in Manchester (CIS Tower), 7244 solar panels, 80 W, 391 kW of ???



Published by Alex Roderick, EE Power ??? Technical Articles: Understanding Solar Photovoltaic (PV) Power Generation, August 05, 2021. Learn about grid-connected and off-grid PV system configurations and the basic components involved in each kind. Solar photovoltaic (PV) power generation is the process of converting energy from the sun into electricity using ???



Generate up to 10kW of clean solar energy with the Loom Solar 10kW Solar Panel. With Shark 575W power and 18/24V PV modules, this panel offers efficient and reliable performance. Reduce your carbon footprint and save on electricity bills with this high-quality solar panel. Below is the monthly generation report, you may want to refer:



The annual electricity generation for 30 PV panels with cooling channel (82 fins and 5 m/s air velocity) is calculated as 17,400 kWh. 888 tons of carbon dioxide emerges as a result of burning coal for 1 GWh electricity generation in coal-based power generation plants. By putting a cooling channel, 506.2 kg coal based, or 270 kg natural gas

# SMILING SHARK PHOTOVOLTAIC PANEL POWER GENERATION PANEL



-700W is the super Hi-efficiency series of solar panels manufactured by Loom Solar. Shark Bi-facial is a solar panel that produces power from the front and backside. The guaranteed generation is 575 watts at STC while Bi-facial technology has ???



Loom Solar provides the most popular solar panel for homes i.e. 1kW. It is equivalent to 1000 Watts. Most of the 1kW solar designs are in 24V PV modules. So, we have chosen Shark 450W\*2 or Shark 455W\*2. You can choose any of ???



The guaranteed generation is 450 watts at STC while Bi-facial technology has the tendency to produce 20% more power. If Shark Bifacial Solar Panel is installed on a surface which is reflective in nature, such as grass, RCC roof, or White paint and Installed at a height of 1.5 meters from the ground may result in 7- 20% additional generation



Solar photovoltaic (PV) generation uses solar cells to convert sunlight into electricity, and the performance of a solar cell depends on various factors, including solar irradiance, cell



The guaranteed generation is 550-680 watts at STC while Bi-facial technology has the tendency to produce 30% more power. If Shark Bifacial Solar Panel is installed on a surface that is reflecting in nature, such as grass, RCC roof, White paint and Installed on a height of 1.5 meters from the ground may result in 7- 30% additional generation

# SMILING SHARK PHOTOVOLTAIC PANEL

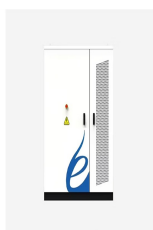
## POWER GENERATION PANEL



The estimated average reduction of PV capacity factors (CFs, defined as the ratio between a PV panel's actual annual power generation and its possible maximum annual generation under the conditions of the name-plate capacity) due to atmospheric aerosol attenuation are presented in Fig. 4. Overall, the highly polluted Northern China Plain and Indo ???



Loom Solar provides the most popular solar panel for homes i.e. 1kW. It is equivalent to 1000 Watts. Most of the 1kW solar designs are in 24V PV modules. So, we have chosen Shark 450W\*2 or Shark 455W\*2. You can choose any of the solar panels. The purpose of buying this capacity of solar panels is to charge existing battery charging.



Discover the power of renewable energy with the Loom Solar 5kW Solar Panel - Shark 575W \* 9, 24V PV Module. This high-quality solar panel provides up to 5kW of clean, efficient energy, reducing your electricity costs and carbon footprint. Trust in the expertise of Loom Solar for efficient and reliable solar power. Below is the monthly

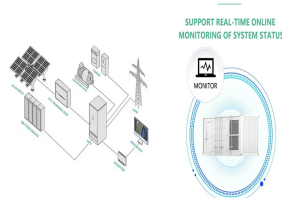


1. Power Rating (Wattage Of Solar Panels; 100W, 300W, etc) The first factor in calculating solar panel output is the power rating. There are mainly 3 different classes of solar panels: Small solar panels: 50W and 100W panels. Standard ???



Solar photovoltaic (PV) power generation is the process of converting energy from the sun into electricity using solar panels. Solar panels, also called PV panels, are combined into arrays in a PV system. PV systems can also be installed in grid-connected or off-grid (stand-alone) configurations.

# SMILING SHARK PHOTOVOLTAIC PANEL POWER GENERATION PANEL



Where  $\eta_1$  is the power generation efficiency of the PV panel at a temperature of  $T_{cell}$ ,  $\tau_{1}$  is the combined transmittance of the PV glass and surface soiling, and  $\tau_{clean}$  is the transmittance of the PV glass in the soiling  $\eta_{1}$



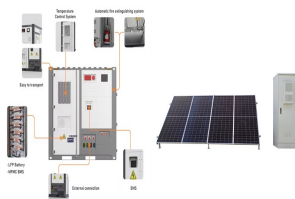
In 2018, solar photovoltaic (PV) electricity generation saw a record 100 GW installation worldwide, representing almost half of all newly installed renewable power capacity, and surpassing all



Applications of 72 Cell Solar Panels. The versatility of 72 cell solar panels is evident in their diverse applications across various sectors: Residential: Homeowners with ample roof space often opt for 72 cell panels to maximize energy production, reduce electricity bills, and contribute to a sustainable future. Commercial: Businesses can harness the potential of these  $\eta_1$



Invest in a reliable and cost-effective renewable energy source. Why should you choose it? Experience the power of renewable energy with Loom Solar 2kW Solar Panel. Maximize energy efficiency and savings with the Loom Solar 2kW Solar Panel. With four Shark 450W panels, this 24V PV module provides a total output of 2kW. Generation (in



Photovoltaic (PV) technology has witnessed remarkable advancements, revolutionizing solar energy generation. This article provides a comprehensive overview of the recent developments in PV

# SMILING SHARK PHOTOVOLTAIC PANEL POWER GENERATION PANEL



Request PDF | On Sep 15, 2021, Mohamad Shukor Bin Abdul Rahim and others published Power Generation Improvement using Active Water Cooling for Photovoltaic (PV) Panel | Find, read and cite all the



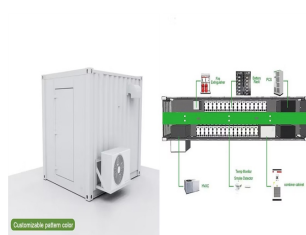
Loom Solar introduces Shark 550 Watt - 24 volt mono perc panel that gives highest efficiency upto 20%. It is the latest technology solar panel in India that works in low light and even in cloudy weather. Buy online 545 watt mono panels with perc technology at loom solar in Rs. 13,000. promised delivery within 3 days.



The performance of solar panels greatly determines the electrical energy production of a solar power generation system. The decrease in performance has an impact on efficiency, output power



Nearly 30% told us that their solar panels provided between a quarter and a half of the total electricity they needed over a year. There's a huge seasonal variation in how much of your power solar panels can provide. Read our buying advice for solar panels to see how much of your power solar panels could generate in summer.



The massive deployment of photovoltaic solar energy generation systems represents a concrete and promising response to the environmental and energy challenges of our society [].Moreover, the integration of renewable energy sources in the traditional network leads to the concept of smart grid [].According to author [], the smart grid is the new evolution of the ???

# SMILING SHARK PHOTOVOLTAIC PANEL POWER GENERATION PANEL



Loom Solar provides the most popular solar panels for homes and businesses. It is a 3kW on-grid solar power system for the home. The Shark 550W \* 5, 24V PV Module has the capacity of a 3kW solar system which is up to 3000W/h. It is ???



1. Solar panel power and efficiency. When it comes to solar panels, "power" refers to the maximum amount of electricity a panel can generate (in watts). The panel's "efficiency" is all about how effectively it can convert daylight into electricity. Higher power and efficiency mean greater electricity production.