

# SOLAR MAN PV BOTSWANA



It has managed more than 700GW PV assets around the world. With the advantages of accurate acquisition, SOLARMAN Business can display plant running status digitally. Moreover, the functions of AI diagnosis, IV curve scanning, virtual weather station, production loss analysis, plant KPI provide multi-dimensional and multi-functional diagnosis and



Jwaneng Solar PV Park is a ground-mounted solar project. Development status The project construction is expected to commence from 2024. Subsequent to that it will enter into commercial operation by 2025. For more details on Jwaneng Solar PV Park, buy the profile here. About Botswana Power



Watch Video About Us IGEN Tech Co., Ltd., founded in 2009, a high-tech enterprise, is professional in innovative applications based on technologies of IoTs, cloud computing and big data. In 2016, IGEN Tech obtained round A financing from Sequoia Capital, and in 2022, it obtained a new round of additional strategic investment. Being focus on [??]



Shumba Tati Solar PV Park is a 100MW solar PV power project. It is planned in North-East, Botswana. According to GlobalData, who tracks and profiles over 170,000 power plants worldwide, the project is currently at the financed stage. It ???



A New Generation of SOLARMAN PV Monitoring and Management Software Platform for Device Manufacturers, PV Professionals, Investors. SOLARMAN Login. SOLARMAN Business; SOLARMAN Smart Electricity prices continue to rise, use more of solar photovoltaic, so that you can have electricity available at any time and reduce electricity expenses



Module PV Rapid Shutdown Module PV Rapid Shutdown SOLARMAN module PV rapid shutdown(MPS) can provide module-level shutdown solution when a fire occurs, which enables that any two nodes voltage of PV array shall not exceed 80V. It ensures the safety of firefighters and O&

# SOLAR MAN PV BOTSWANA

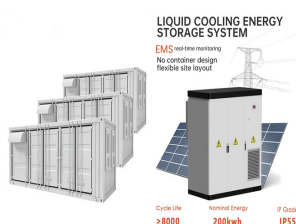
---

M personnel. Module-PV-Rapid-Shutdown Module-PV-Rapid-Shutdown  
Feature NEC ???

# SOLAR MAN PV BOTSWANA



Global energy shortage, Electricity prices continue to rise, use more of solar photovoltaic, so that you can have electricity available at any time and reduce electricity expenses, without the trouble caused by skyrocketing of electricity ???



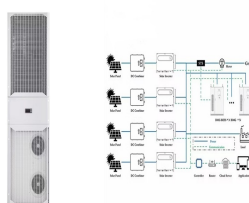
Data Logger Smart Meter Weather Station Anti-Reflux Box (Smart Power Controller) Module PV Optimizer Module PV Rapid Shutdown Communication Manager. My Main Business\* (Multiple Choices)  
Residential PV plants Commercial& Industrial PV plants Utility-scale PV plants Storage. Where did you find us?\*



Energy Storage Management System, Based on the IoT, cloud computing, artificial intelligence technology, collects real time data such as BMS, PCS, temperature control system, dynamic ring system, video monitoring and other ???



Service Contact Service Hotline +86-510-68005664 (Mainland China) 09:00-18:00 (GMT+8) every day, 7 days per week, all year round  
Technical Support Experienced technical engineers will provide online instant Q& A and remote trouble shooting services for global customers.  
Email: customerservice@solarmanpv Service Field Service SOLARMAN will provide field ???



PV monitoring refers to the real-time data collection and analysis of photovoltaic power generation systems through various technical means to ensure the optimal performance of the system and timely detect potential problems. These technologies usually include sensors, data loggers, communication equipment, and data analysis software.  
Application of PV ???

# SOLAR MAN PV BOTSWANA



SOLARMAN supports PV system with different types (grid-tie, off grid, etc.), acquiring and supervising multiple device types. (e.g. inverter, weather station, combiner box, module, meter, micro inverter, battery and etc.) SOLARMAN system can calculate and display energy uses from solar generation and sources for daily power consumption



Featuring in customization, it perfectly adapts to different kinds of distributed PV projects. Moreover, it furnishes plant developers, installers, O& M service providers with sophisticated tools to increase work efficiency and reduce management cost. LP-2. LP-2. Previous. Next. LP-2.



Energy Storage Management System, Based on the IoT, cloud computing, artificial intelligence technology, collects real time data such as BMS, PCS, temperature control system, dynamic ring system, video monitoring and other data of the energy storage system for data recording and analysis, fault warning, through ESSMAN cloud platform, the centralized monitoring, strategy ???



The Original SOLAR-MAN(R) is a small family owned business that has been providing energy management solutions to South Australians for over 16 years. In 2016, The Original SOLAR-MAN(R) became the first exclusively South Australian "Clean Energy Council Approved Solar Retailer", now known as "New Energy Tech Approved Seller".



A solar monitoring system is an intelligent device that provides real-time data and reports by monitoring the performance parameters, energy yield, and environmental conditions of the solar system. With real-time data and reports, you can monitor the power and efficiency performance of your photovoltaic panels, battery charge and discharge

# SOLAR MAN PV BOTSWANA



Our Products SolarBW Solar Energy Solutions is a family-owned company operating in Botswana, South Africa, Zambia and the Indian Ocean Islands. We Distribut About. About SolarBW; Our Team; Products. Renewsys Solar PV Modules and all Victron Energy Products. Our Freedom Won Batteries offer a 10 year guarantee, Fronius offers a 5 year



Modern weather stations use a variety of advanced instruments and technologies to observe and record various weather phenomena. The most important equipment is the meteorological sensor, which can measure various meteorological elements such as temperature, humidity, wind speed, wind direction, air pressure, precipitation, etc.



Offer various solutions in compliance with distributed PV requirements for industrial and commercial systems. Learn More. Residential. Visualized household energy consumption brings comfortable and eco-friendly life to global users. Learn More. Energy Storage.



Residential With deep understandings of modern family life, SOLARMAN is able to meet individual user's demands by visualizing household energy consumption and offering scenario-based power management system through IoTs, bringing comfortable and eco-friendly life to global users Residential PV Plant Location: PolandInstalled Capacity: 3KWRelated Products: ???



SOLARMAN smart meter is applied for energy management purpose, and it works to measure and control electricity consumption of apartment renting, household and industrial electricity, charging station, PV plant, intelligent building, chain stores, communication stations and etc,. It features in high reliability, high accuracy, compact size and easy to install, etc.

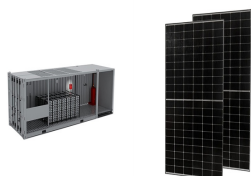
# SOLAR MAN PV BOTSWANA



SOLARMAN weather station is specifically designed for PV system. It provides a comprehensive environmental monitoring solution for users including irradiance, ambient temperature and humidity, wind direction and speed, and module temperature. With the combination of accurate real-time data, durable products and powerful online platform



These sensors, embedded with advanced technology, track key weather parameters including solar radiation, temperature, humidity, wind speed and direction, and precipitation. The precise measurements facilitate dynamic adjustments to solar PV systems, enhancing overall efficiency and maximizing energy yield.



By controlling the output current and voltage of module, SOLARMAN module PV optimizer (MPO) can reduce the loss of power generation caused by current mismatch in the case of shadow shield, module decay, ash deposition, double-sided power generation and etc., which can be recovered by up to 25%. Paired with SOLARMAN gateway, it realizes data



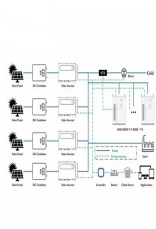
The SOLARMAN energy monitoring system is designed specifically for solar PV systems. SOLARMAN Smart simplifies smart energy management for global solar households. Its user-friendly interface and all-round monitoring capabilities support various solar systems such as grid-tie, off-grid and storage system. Users can easily track their data



By controlling the output current and voltage of module, SOLARMAN module PV optimizer (MPO) can reduce the loss of power generation caused by current mismatch in the case of shadow shield, module decay, ash deposition, double ???

# SOLAR MAN PV BOTSWANA

---



Equipped with advanced communication capabilities like GPRS, WiFi, 4G, Ethernet, and data Logger can connect to multiple devices via RS485/RS422/RS232 and other interfaces. Meanwhile, remote monitoring cloud platform (SOLARMAN system) provides powerful data support for the logger. This cutting-edge tool plays a crucial role in optimizing energy ???