

# SOLAR PHOTOVOLTAIC PANEL ALUMINUM EDGE



Solar Panel Edge Protection Ltd, call 0808 164 9919 or complete our online form. Serving all of Scotland. 0808 164 9919; [info@solarpanelpigeonproofing.uk](mailto:info@solarpanelpigeonproofing.uk) Let us help you maintain your solar panels and solar PV system by offering ???



Aesthetic Arrays, Sleeker All Around. IronRidge Contour (R) Trim elevates the look of any solar array by providing a sleek trim (or skirt) across the south edge or around the perimeter to hide components that are visible beneath the solar panels.. Homeowners want the solar on their home to meet their energy needs, while not detracting from their home's aesthetics.



Attach solar panels & rails directly to standing seam metal roofs without drilling using S-5!'s PVKit 2.0. Save up to 50% on material cost & installation time! (w/ aluminum PV Disk). Install the first row of S-5! clamps or brackets at the edge of the array. Mount the PV Disks and the EdgeGrab/standoff assembly to the first row of clamps



Trusted by leading PV professionals in 140+ countries, top corporations, homeowners and energy stakeholders across diverse applications. Stay informed about our cutting-edge technologies, innovative products, and exciting developments as we continue to shape the future of renewable energy. Sep 24 - 26, 2024 / The NEC Birmingham. Solar

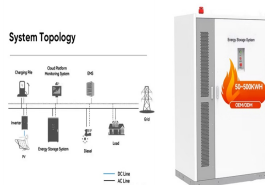


Our end clamps are made of extruded anodized aluminum 6005-T5. They are essential components for PV system installation, used for solar panels mounting structure, secure the edge of PV modules directly to mounting rails firmly. This Solar panel mounting end clamps 45mm are designed to work with the solar panels with frame height of 45mm.

# SOLAR PHOTOVOLTAIC PANEL ALUMINUM EDGE



Erhöhte Leistung mit Premium-PV-Modulen . Wir haben unsere branchenführende DC-Optimierungstechnologie mit einer verbesserten Modulleistung kombiniert, um eine bessere Performance zu erzielen. Integrierte Leistungsoptimierer und Half-Cut-Zelltechnologie liefern mehr Leistung aus jedem Modul; Verringerung aller Arten von Leistungsverlusten



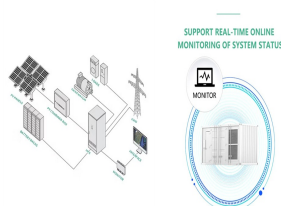
Installations of solar panels in Spain have grown by more than 100% in 2021, according to the Spanish Photovoltaic Union (UNEF). These impressive figures have been boosted by the repeal of the sun tax and the recent subsidies for ???



Extruded Aluminum Edge Trim; Brushed Aluminium Angle Trim; It is the most import element in assembling for PV solar Modular. Wellste Aluminum has manufactured and supplied solar panel aluminum frame for over 20 years. 30 engineers, 10 years of aluminum industry working experience can offer you the best solution for your solar panel and



Each 6-3/4" or 5-1/2" x 4" panel has 3M VHB??? peel & stick adhesive along the top edge of the panel.025 Aluminum stock - strengthened by design to prevent bending or warping; specifically SolaTrim pest abatement barriers for photovoltaic (PV) installations. Provides solar panel protection from birds, rodents, squirrels, and debris.



Using Clenergy innovative Z-module technology to easily attach the Solar PV modules and the FR Drive tool with sharp point screw geometry for fast reliable screw fixing. To find out more about our Trapezoidal Solar Panel Mounting System call us on +44 (0) 808 275 9955 or email sales@genesis-solar .uk. Primary Sidebar.

# SOLAR PHOTOVOLTAIC PANEL ALUMINUM EDGE



SolarEdge Designer is a free solar design tool that helps PV professionals like yourself lower PV design costs and close more deals. Learn more.

EDGE Academy / What are you looking for? Please fill in this field.

Automatic population of the rooftop using an irradiance map and shading analysis optimum placement of the solar panels, so



A 2-in-1 innovation A combination of photovoltaic and thermal solar energy that produces at least 2 times more energy than a conventional photovoltaic panel.; Made in France label SPRING technology is designed by Dualsun's ???



Best-Selling PV Mounting Profiles for Rooftop Photovoltaic Installations. 1. PV Profile ID: SP2T0,797P1600 The SP2T0,797P1600 aluminum profile is one of our top choices for mounting solar panels on various roof structures, including ???



Photovoltaic Panels and Solar Cells play a pivotal role in harnessing solar energy and converting it into electricity. Over the years, advancements in materials and technology have revolutionized the efficiency, durability, and affordability of ???



Designing, manufacturing and supplying. Since the incorporation of SUNFIXINGS in January 2011, we've strengthened our presence in the solar industry as a trusted leader in designing, manufacturing and supplying quality solar PV mounting systems.

# SOLAR PHOTOVOLTAIC PANEL ALUMINUM EDGE



Active cooling of PV panel using water cooling tower: This research by Zhijun Peng et al. [31] is aiming to investigate practical effects of solar PV surface temperature on output performance, in particular efficiency. The setup for this experiment comprises the solar PV panel setup with a cooling water channel on the backside.



The performance of solar fields and their power sale revenue are directly dependent on the reflectivity (for solar thermal) and solar panel absorptivity (for solar PV). Unfortunately the mirrors and panels are subjected to exposure to dust moisture and aerosols resulting in a significant drop in system efficiency [ 76 ].



A solar energy system is basically made up of solar modules (aka solar panels), and inverters. Solar panels generate electricity by converting solar radiation into direct current (DC energy). The inverter converts the DC energy to alternating current (AC) which is used to power our homes, businesses, and other buildings.



Solar Panels Installation Guide: To help you understand a retrofit installation of solar photovoltaic panels we have broken it down into its individual stages. If you would like more information about solar panel installations or would prefer to speak to someone you can contact us ???



1. Purpose 2. Scope of Application 3. Duties of the Operator in The Solar Energy Production 4. Content 4.1 Cutting EVA 4.2 Cell Sorting for Solar Energy Production 4.3 String Welding the Solar Panel 4.4 Lay Up the Solar Panel 4.5 ???

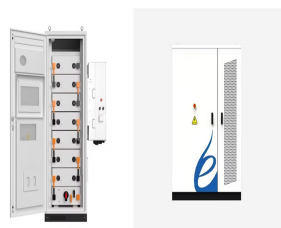
# SOLAR PHOTOVOLTAIC PANEL ALUMINUM EDGE



Aluminum solar panel frame is a supporting structure that surrounds and secures a solar panel. It is typically made of extruded aluminum and provides a rigid and durable frame that can withstand environmental stresses, including wind, rain, ???



Established in 1994, GB-Sol is an independent UK company, manufacturing solar PV panels and mounting systems at our spacious factory on the Treforest Industrial Estate, just north of Cardiff. A spin-out from the Cardiff University solar test centre, GB-Sol has been at the forefront of solar power generation for several decades.



Explore the critical process of PV Module Lamination in this detailed technical explanation. Discover how lamination enhances the durability and efficiency of solar panels, ensuring optimal performance in various environmental conditions. Perfect for industry professionals and enthusiasts looking to deepen their understanding of solar technology.



A fire of solar photovoltaic technology Aluminum Extrusions are being embraced as frames and mounting systems of solar panels because they offer the solution of providing affordable, durable, and light. As enhancements in the properties of such alloys and designs are developed, these extrusions are not only enhancing the efficiency of solar installations but also contributing to ???



A solar PV module, or solar panel, is composed of eight primary components, each explained below: 1. Solar Cells Aluminum Frame. The aluminum frame is a crucial structural component, providing strength to the panel. Using a frame made of lightweight yet robust material is recommended. It should possess rigidity and the ability to endure

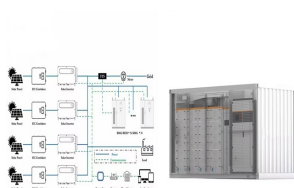
# SOLAR PHOTOVOLTAIC PANEL ALUMINUM EDGE



Buy the high-quality aluminum solar panel frames. We carry a large inventory of aluminum extrusions for Solar Panels at the best price. The solar Photovoltaic (PV) cells and EVA encapsulant layers of a solar panel setup are also ???



The aluminum L-shaped solar PV bracket corner code mainly plays an auxiliary role as the bracket and is used to install and fix the battery panels. Usually solar corner codes are used to connect solar panels and brackets. For some double-glass frameless modules, the corner code directly clamps the photovoltaic glass and then connects the bracket.



The photovoltaic panel converts into electricity the energy of the solar radiation impinging on its surface, thanks to the energy it possesses, which is directly proportional to frequency and inversely to wavelength: this means that the energy of infrared is less than that of ultraviolet for the same amount of irradiation.



Aluminum frames can improve the structural integrity of solar panels, which increases their energy generation capacity and reduces operational costs. Aluminum frames are resistant to corrosion and can withstand harsh weather ???