

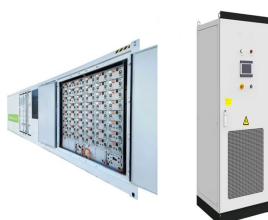
# SOLAR PHOTOVOLTAIC PANEL INSTALLATION SLIDE RAIL



With a size of 41mm x 41mm x 3.5m, these Rails are compatible with a wide range of solar panels, making them a versatile choice for your solar installation needs. The rails feature a simple and easy-to-install design, allowing for quick and hassle-free setup. One of the key benefits of our Solar Mounting Rails is their adjustability.



The aluminum rail for mounting system is made of high-strength extruded aluminum alloy, and there are a variety of solar panel mounting rails for you to choose from. Feature: 1. Made of high-strength extruded aluminum; 2. Light weight, easy to transport and easy to install; 3. Accept customized solar panels to install aluminum rails; 4.



the PV panel. 1/4-20 flange nut, SS 4 25-2501-014 End Clamp Kit 1 29-7000-xxx Used on the first and last PV panel in a row 1 kit will cover the first and last PV panels in a row. Part number changes depending on panel used. Example part numbers shown. End Clamp 4 51-6000-xxx 1/4-20 x 1" SS hex-cap bolt, SS 4 23-2520-100 1/4-20 flange nut, SS



This page covers installing the rails, the PV panels, and the micro-interterers. Installing the Rails. Once the mount frames are in place, the aluminum rails can be mounted. The rails in turn allow easy installation of the PV panels and inverters. In our case, the rails were provided by IronRidge. The IronRidge PV mounting rail.



19. A PV cell is a light illuminated pn- junction diode which directly converts solar energy into electricity via the photovoltaic effect. A typical silicon PV cell is composed of a thin wafer consisting of an ultra-thin layer of phosphorus-doped (n-type) silicon on top of a thicker layer of boron-doped (p-type) silicon. When sunlight strikes the surface of a PV cell, photons ???

# SOLAR PHOTOVOLTAIC PANEL INSTALLATION SLIDE RAIL



The QRail(R) Series is an innovative rooftop racking system featuring QClick(R) and QSplice(R) technology that simplifies and speeds installation. QRail(R) seamlessly combines with QuickMount(R) waterproof mounts to provide a complete, fully ???



Product Type: T-Bolt for Solar Panel Mounting Systems Product Model: Solar-Panel-T-Bolts-for-PV-Module-Rails Material: SUS 304 Steel Max Wind Load : 60 m/s Max Snow Load : 1.4 KN / M<sup>2</sup> Solar Module Orientation: Portrait or ???



Therefore, the solar mounting structure needs to adjust solar panels to an inclined surface. In order to do so, manufacturers offer several options: #1 Railed mounting system. The most common roof mounted ???



Elvic Solar mounting system is a strong, versatile system for mounting PV Solar Panels on low and steep-sloped roofs. The system consists of aluminum module support rails and includes all necessary components in order to attach the rails to each other, the rails to the roof and the Solar Panels to the rails. The system allows Solar Panels to be



What is a Solar Rail Splice? A solar rail splice is a connector used to join two solar rails, creating a continuous support structure for solar panels. It is designed to withstand the weight of the panels and the forces exerted by wind, rain, and other environmental elements. Key Considerations When Buying Solar Rail Splices

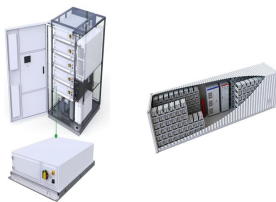
# SOLAR PHOTOVOLTAIC PANEL INSTALLATION SLIDE RAIL



Anbte 10PCS Solar Panel End Clamp 30-45mm Adjustable, Z Brackets for Solar Panels Include 10 Screws M8, Aluminum Rail End Clamps for Solar Panel PV Mounting System, Silver. 4.9 out of 5 stars 13. Boat, Wall, Caravans, Yacht and Other Off Gird Installation. 4.0 out of 5 stars 1.



K2 solar panel rails 3.65m Lengths. New ultra light solar panel roof rails enable less-waste reducing cutting time. These ideal solar panel rail lengths will hold up to 3 full size landscape oriented solar panels sided by side. If a larger span is ???



Our range of Fastensol offers premium Solar Panel Fixings & Solar Panel Mounting Rails, a cutting-edge solution for efficient solar installations. These high-quality components ensure secure panel attachment and easy alignment, ???



Complete the solar panel installation using SunModo's SMR rail system. The PVKIT HUR is the first rail-less PV mounting system designed for high wind uplift performance of installed solar panels, such as coastal communities and other high-wind and hurricane zone areas. It's the first metal roof PV mounting system to achieve FM Approvals



??? a lightweight solar laminate (amorphous) solar PV system installed on the roof instead, glued or heat sealed in place ??? a ground-mounted system. Ground-mounted Ground-mounted solar PV panels are fixed to an A-frame or other purpose-built framework in much the same way as flat roof-mounted solar PV panels.

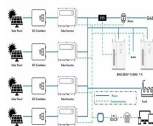
# SOLAR PHOTOVOLTAIC PANEL INSTALLATION SLIDE RAIL



The solar panels slide on the rail tracks, allowing high slope adjustability. you need to remove the solar panels. Ease Of Installation. A rail-mounted system is easy to install as you do not need to attach each panel individually. Installers ???



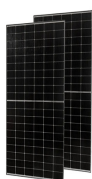
Solar panel rails come in various sizes to accommodate different panel dimensions and installation requirements. The most common cross-sectional dimensions for residential and light commercial use are about 40mm x 40mm, although they can range anywhere from 35mm to 50mm in width and depth, depending on the manufacturer and structural needs.



EcoFasten offers rail-based & rail-less solar panel mounts and solar panel racking solutions for a variety of roof types including composition shingle, tile, concrete, and metal. Each of our systems is patented and conforms to UL 2703. Designed by installers, for installers, these complete systems are faster and simpler to install than other



Solar panel rails and brackets are both essential components of solar panel installation systems, but they serve different purposes Solar panel rails They are typically made of aluminium or steel, and for the roof, the rails are mounted to a bracket (or to an Angle for an angled system), and the rails are mounted to the rafters for the ground.

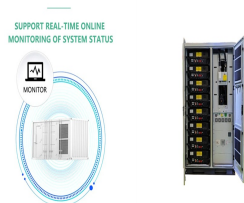


High quality solar panel installation is crucial for your solar PV system to last long & to endure all weather conditions to you get your investment back. Read our reviews and select the best solar panel installer when you get a solar PV system. when they are tightened, they're not sliding anywhere. The rails are normally around 3

# SOLAR PHOTOVOLTAIC PANEL INSTALLATION SLIDE RAIL



Rail and Panel Installation. Once the panel installation is complete, PV connectors (sometimes called MC4 connectors) are linked. Installed along with the inverter, a battery will help you to save money. And as an added bonus, VAT on solar panel installation is zero because it's part of an energy saving solution. It's a win-win!



Estimating the number and size of rails, mid and end clamps, L-feet, or standoffs for your solar installation could be troublesome. This brief introduction offers insight into estimating the number of solar racking parts a project might need. Some of the most important questions for most installers and DIY solar enthusiasts concern mounting



Solar energy has become a cornerstone of renewable energy solutions worldwide. A critical component of any solar installation is the mounting system, which includes mounting rails and racks. Understanding their roles and importance ensures that solar panels are securely installed and optimally positioned for maximum energy generation.



Sandwich Panel Systems; Solar Tripod Support Systems; Radiant Terrain Rac Ground Mount Systems; System Calculator; Services. Custom Design Service; FAQs; About Us. Leadership; Blog; Contact; 07 3907 0924. Rail Length (mm) (\*): (\*) Required: System Details. X. Number of panels in each row (\*) Spacing between feet (mm) (\*)



Complete the solar panel installation using SunModo's SMR rail system. The PVKIT HUR is the first rail-less PV mounting system designed for high wind uplift performance of installed solar panels, such as coastal communities and other high-wind and hurricane zone areas. It's the first metal roof PV mounting system to achieve FM Approvals

# SOLAR PHOTOVOLTAIC PANEL INSTALLATION SLIDE RAIL



The primary factors in any photovoltaic (PV) system installation are the solar panels as they are the devices that transform solar energy into electricity. Plas-Sol Mounting Plas-Sol Rail Aluminium 5m 10pc Buldle. R 3,738. In stock, 35 ???



Solar sliding nut M8 with ball is a fasten accessory for PV module installation sliding in aluminum alloy rail. The roll-in ball with spring loaded can help these nuts stop in any position of rail grooves. This sliding slot nut with spring ball is designed for M8 PV aluminum groove profiles.



Roof rails ready for the installation of solar panels. Clipping the Solar Panels to the Roof Rails. Solar panels are clipped to the rails with a different clip. There are fewer variations here; ultimately, they all have some part that goes into the rail and another that sits on top of one or two panels. The two parts are fastened with a bolt.



Competitive price solar panel mounting rails accessories, aluminum slider nut. \$0.30-0.40. Min. Order: 50000 pieces. Easy installation Solar Panel Mounting Rail PV Structure Photovoltaic Accessories Aluminum Bracket Roof Solar Mounting Rail. \$3.55-3.58. Min. Order: 5 pieces.