

SOLAR POWER GENERATION ON CHICKEN SHED ROOF



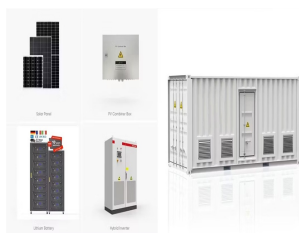
It can cost between \$2,000 to \$6,000 to install solar panels on a shed roof. Depending on the type of roof, your shed may not be ideal for solar generation. Solar powered sheds should ideally have tile, slate, or ???



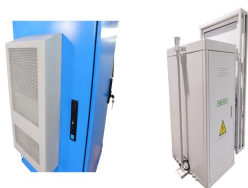
Understanding how to set up solar panels for shed is a game-changer for many homeowners. Solar energy not only offers an eco-friendly power source but also transforms sheds into fully functional workspaces, studios, or retreats. In this guide, we'll outline the essential steps, from sizing your solar panels to the installation process, ensuring you harness the sun's power ???



Below is a chart comparing solar generation potential based on roof size, assuming all of the same metrics as before: 320-watt solar panels, 17.5 square foot panels, and using every inch of roof space available for solar.



The cost of solar panels for a shed can vary widely, typically ranging from \$300 for a basic DIY kit to over \$3,000 for a more comprehensive system. Higher efficiency means more power generation in a smaller space, but it often comes with a higher price tag. The available roof space on your shed and its orientation towards the sun can



In this section, we will explore four different types of chicken coop roofs: the gable roof, the shed roof, the gambrel roof, and the flat roof. Solar Panel Roof. Imagine harnessing the power of the sun to not only provide shelter for your chickens but also generate electricity. A solar panel roof is an innovative and eco-friendly option

SOLAR POWER GENERATION ON CHICKEN SHED ROOF



The product and installation cost of solar panels to power a shed will be minimal in comparison to digging up the garden to install reinforced cables run from the mains. A simple lighting and power system can cost under ?300 (like this one from Posh Shed Company) while hiring an electrician to wire a shed will cost significantly more.



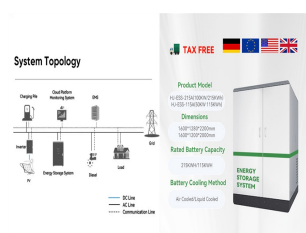
A standard shed with a 120-square-foot roof can fit about six to eight standard solar panels about 10 feet by 12 feet. EcoFlow panels are smaller due to their foldable design. They are 105cm x 236cm, which translates to about 3.4 feet by 7.7 feet, meaning you can fit more panels on your shed's roof.



In this case, I would require a system with a solar power DC generation capacity of 2.658 kWp to power my shed. Determining the Number of Solar Panels. Once the required DC power is known, you have to select a ???



A standard shed with a 120-square-foot roof can fit about six to eight standard solar panels about 10 feet by 12 feet. EcoFlow panels are smaller due to their foldable design. They are 105cm x 236cm, which translates to about 3.4 feet by 7.7 feet, ???



Mounting the Solar Panels. We opted for roof-mounted solar panels as the shed's roof received ample sunlight throughout the day. The panels were positioned at an optimal angle to capture the maximum amount of sunlight. Wiring and Connection. Proper wiring was crucial for the system's efficiency and safety:

SOLAR POWER GENERATION ON CHICKEN SHED ROOF



1. Power Rating (Wattage Of Solar Panels; 100W, 300W, etc) The first factor in calculating solar panel output is the power rating. There are mainly 3 different classes of solar panels: Small solar panels: 50W and 100W panels. Standard solar panels: 200W, 250W, 300W, 350W, 500W panels. There are a lot of in-between power ratings like 265W, for



I'd like to install a modest solar system on my shed to power a couple lights in my shed and a heat lamp in a chicken coop (for the winter). Any recommendations on a setup, amount of power needed to do this, and a battery capable of powering a ???



Separate Power Generation: By installing solar panels on your shed roof, you can create a separate power generation system. This can be advantageous if you have a detached shed or want to provide power to specific areas of your property, such as outdoor lighting or a workshop.



Reputable solar kits also come with warranties for the products and power distribution, sometimes as long as 25 years. They might last longer than your shed! Once you've put solar panels on the shed roof, or next to the shed if your yard is sunny enough, all you'll need to do is clean them off a couple of times a year. And it's easy!



Calculating solar generation potential. We use the following assumptions to calculate solar generation potential in an ideal scenario: 850 square feet of usable roof space for solar: The average U.S. roof is about ???

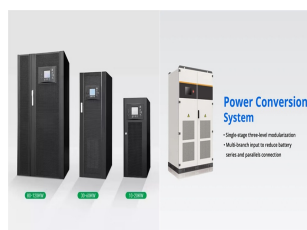
SOLAR POWER GENERATION ON CHICKEN SHED ROOF



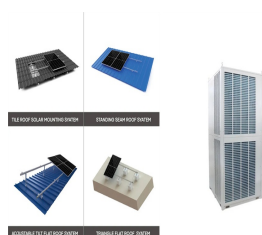
Installation locations for solar panels. Solar panels are traditionally installed on the roof of a house or business. Installing solar panels on the roof is typically a good option as a roof has minimal shadowing and is often unused space. However, some consider solar panels fitted to a roof to be an eyesore and therefore look for more



1.3 Installing Solar Panels on a Shed Roof; 1.4 Connecting the Shed Solar System to the Main Grid; 1.5 Energy Storage Options for Shed-Based Solar Power; 1.6 Safety Considerations for Shed-Mounted Solar Panels; 1.7 Maximizing Energy Production from Shed Solar Panels; 1.8 Potential Challenges and Solutions; 1.9 The Future of Shed-Mounted Solar



#1 Solar Panels Attached to the Roof. This type of solar energy system is more comparable to the panels that are typically found on the roof of residential properties. Solar panels would need to be affixed to the shed roof and combined with an inverter that converts the current for use in sockets as well as providing power for lighting.



However, some solar kits can now support heavy power usage like your roof-mounted PV solar panels. While solar kits are compact and more DIY-friendly than roof-mounted solar panels, they can be less efficient and less durable. What's Included In A Solar Kit? A solar kit comes with compact solar panels, inverters, a battery, charge controllers



Battery: The battery bank stores the power produced by the solar panels. Even if you're using some of the power as it's generated, excess usually needs to be stored in a deep-cycle battery for later use. Charge controller: This device ???

SOLAR POWER GENERATION ON CHICKEN SHED ROOF



The number of solar panels needed to power a shed depends on several factors, such as the shed's energy requirements, panel wattage, and available sunlight. As a general guideline, a 100-watt solar panel can generate approximately 12-20 kilowatt-hours (kWh) per month, so calculate your shed's energy needs and divide it by the panel's output to ???



How do Solar Powered Fans Work? It's critical to realize how solar-powered fans use the sun's energy to appreciate its enchantment fully. These clever gadgets turn sunlight into electricity using solar panels, which power the fans.. This autonomous system maintains constant airflow and ventilation within the chicken coop without relying on outside power sources.



When planning for solar PV panels on a shed roof, work out what you expect to use the energy for first. This will determine what type of solar panel system you'll need. If it faces east or west, then you lose around 20% of the potential power generation. However, it's fine to have panels on both the east and west pitch if the shed is

114KWh ESS



The wire allows you to distribute power throughout the shed. Install the solar panel array. For a permanent installation on a shed roof, rigid solar panels are likely your best bet. Portable solar panels give you more flexibility to move the panels easily. Set up the portable power station or balance of system components. Portable power



The wire allows you to distribute power throughout the shed. Install the solar panel array. For a permanent installation on a shed roof, rigid solar panels are likely your best bet. Portable solar panels give you more ???

SOLAR POWER GENERATION ON CHICKEN SHED ROOF



You'll need to choose the right number and power of solar panels based on your shed's roof area and orientation. Generally speaking, solar panels can produce about 100 watts of electricity per square meter. In ???



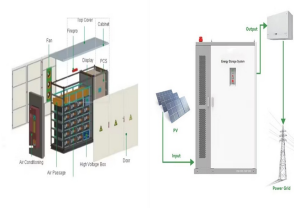
In terms of how you use ??? or intend to use ??? your shed, if you spend lots of time in there and need electricity to power lights, appliances, gym shed, or garden office equipment, then solar panels could be a money-saving (and eco-friendly) alternative to mains power. Especially if you need solar panels for shed heating or summerhouse lighting (for example).



When choosing a battery, consider capacity, voltage, and durability factors. Deep-cycle batteries are the most appropriate for solar-powered chicken coops as they are designed to discharge energy over a long period. A 12-volt battery is usually sufficient for a small chicken coop.. It is worth noting that photovoltaic (PV) panels require maximum exposure to ???



Solar roof panels (Image credit: Ashley Cooper/Getty Images) The other type of solar is more like the type you see on houses. This means solar panels on your shed roof, cabling to an inverter and sockets to plug in devices as well as power for lighting. These will also require a battery system to make sure you can harvest all that solar power



The average cost of installing solar panels on a shed roof in the UK varies according to the size of the solar PV system and the specific components required. However, you can expect to pay anywhere from a few hundred pounds for a basic lighting system to ?1,000 ??? ?2,000 for a comprehensive solar setup.