

SOLAR PROFILE HEARD AND MCDONALD ISLANDS



Why are Heard Island and McDonald Islands isolated? However, the site's isolation assists in reducing anthropogenic impacts upon the site's values. Heard Island and McDonald Islands are located in the Southern Ocean, approximately 1,700 km from the Antarctic continent and 4,100 km south-west of Perth.



What is the Heard Island & McDonald Islands Marine Reserve? One of the world's largest highly protected IUCN category 1A marine reserves the Heard Island and McDonald Islands Marine Reserve was established by Australia in the waters surrounding HIMI in 2002.



How big is Heard Island & McDonald Islands? The group's overall land area is 372 km² (144 sq mi) and it has 101.9 km (63 mi) of coastline. Discovered in the mid-19th century, the islands lie on the Kerguelen Plateau in the Indian Ocean and have been an Australian territory since 1947. Heard Island and McDonald Islands contain Australia's only two active volcanoes.



Where is Heard Island? Insular Antarctica (7.4.9) Located in the southern Indian Ocean 4,100 km south-west of Australia and 1,700 km north of Mawson Base, Antarctica. Heard Island is at 53°06'S by 73°30'E with the McDonald Islands 43.5 km west of it at 53°03'S by 72°36'E.



Where are Heard Island and McDonald Islands located? The islands are a territory (Territory of Heard Island and McDonald Islands) of Australia administered from Hobart by the Australian Antarctic Division of the Australian Department of Climate Change, Energy, the Environment and Water.

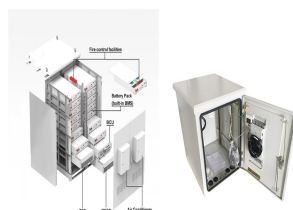
SOLAR PROFILE HEARD AND MCDONALD ISLANDS



Who manages the Heard & McDonald Islands? The islands are administered under the Heard and McDonald Islands Act of 1953 and the Environment Protection and Management Ordinance of 1987 by the Antarctic Division of the national Department of Tourism, Arts & Environment (formerly the Department of the Arts, Sport, the Environment, Tourism & Territories, DASETT).



Management plans also explain what the objectives are for managing the area, and what the managers will do to help meet those objectives.. It is a requirement of the Environment Protection and Biodiversity Conservation Act 1999 (the EPBC Act), under which the Heard Island and McDonald Islands (HIMI) Marine Reserve was declared, that a management plan be prepared ???



The Heard & McDonald Islands site in Australia was inscribed on the World Heritage List in 1997. As the only volcanically active sub-Antarctic islands, Heard and McDonald provide the ???



McDonald Island, Heard Island, Heard Island and McDonald Islands's evening weather forecast for today and the next 15 days. Includes the low, RealFeel, precipitation, sunrise & sunset times, as



? 1/4 ?? 1/4 ? Heard Island and McDonald Islands, ? 1/4 ? HIMI ? 1/4 ?, 1947, 1997 ? 1/4 ????? 1/4 ????? 1600 ? 1/4 ? 1000, 3700

SOLAR PROFILE HEARD AND MCDONALD ISLANDS



Calculations of sunrise and sunset in Heard Island ??? Heard and McDonald Islands ??? Australia for November 2024. Generic astronomy calculator to calculate times for sunrise, sunset, moonrise, moonset for many cities, with daylight saving time and time zones taken in account.



The barren island of Heard and McDonald were once under the United Kingdom before it became a territory of Australia. The UK union jack flag is considered the only previous flag to have been used on the Heard and McDonald Islands. It was first hoisted on the island in 1910. Later on, in 1947, the island fell into Australian authority, and since



Heard & McDonald Islands Postcodes, ZIP Codes, Postal Codes information, The Heard & McDonald Islands is a country primarily located in Antarctica, The capital is Canberra. The numeric is 334 and dial code is +672. The postal system name in the country is Postcode, You can find out the postal code of each region from our website. We provide postal codes for 2 ???



The Territory of Heard Island and McDonald Islands [2] [3] (HIMI; [4] ISO 3166 region code: HMD, HM, 334; [5]) is an Australian external territory comprising a volcanic group of mostly barren Antarctic islands, about two-thirds of the way ???



Public consultation paper 1 Purpose of this document The Proposal to expand Heard Island and McDonald Islands Marine Reserve ??? Public consultation paper ("proclamation proposal") has been prepared to support public consultation on the proposed design of an expanded Heard Island and McDonald Islands (HIMI) Marine Reserve.

SOLAR PROFILE HEARD AND MCDONALD ISLANDS



Key Words: Heard Island, McDonald Islands, Kerguelen Plateau, volcanism, volcanic activity, Big Ben, Laurens Peninsula, plume systems
INTRODUCTION The Australian Territory of Heard Island and the McDonald Islands, centred on Heard Island at 53°06'S; 73°32'E, is one of the most isolated regions on Earth, lying in the central-



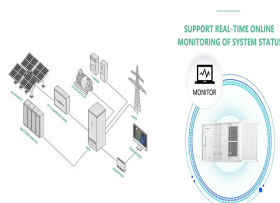
Heard Island and McDonald Islands in the Southern Ocean A map of Heard Island and McDonald Islands. Heard Island, by far the largest of the group, is a 368-square-kilometre (142 sq mi) mountainous island covered by 41 glaciers [21] (the island is 80% covered with ice [1]) and dominated by the Big Ben massif has a maximum elevation of 2,745 metres (9,006 ft) at ???



Economic Data, Demographic Data, Boundary Map and Statistics for Heard Island and McDonald Islands. Heard Island and McDonald Islands - Country Profile. HM ISO Alpha-2. HMD ISO Alpha-3 +672 Dial Code.hm Internet TLD. Official Name: The Territory of Heard Island and McDonald Islands: Administrative Levels: Population Heard Island and McDonald



? 1/4 ? Heard Island? 1/4 ?,3800,2000,40,???1953,???1997??? ???



? 1/4 ?? 1/4 ? Heard Island and McDonald Islands,? 1/4 ?HIMI? 1/4 ?,1947 ,1997? 1/4 ????? 1/4 ????? 1600? 1/4 ?1000,3700

SOLAR PROFILE HEARD AND MCDONALD ISLANDS



Located in the Southern Ocean, this Australian external territory comprises mainly two volcanic islands, Heard Island and the McDonald Islands, featuring stark volcanic landscapes, glaciers, and the highest mountain in Australian territory, Mawson Peak. Significance.



Heard and McDonald Islands are home to glaciers, wetlands, Australia's only active volcanoes, and diverse and significant populations of penguins, seals and albatrosses. This decision comes after extensive consultation with researchers, conservationists and the fishing industry. The design supports the sustainable, well-established fishery in



Time for sunrise, sunset, moonrise, and moonset in Territory of Heard Island and McDonald Islands ??? Heard and McDonald Islands ??? Australia. Dawn and dusk (twilight) times and Sun and Moon position. Takes into account Daylight Saving Time (DST). Solar Noon; Feb Sunrise Sunset Length Diff. Time Mil. mi; Feb 16: 5:04 am: 7:33 pm: 14:29:07



The Territory of Heard Island and McDonald Islands (HIMI) is an Australian external territory comprising a volcanic group of mostly barren Antarctic islands, about two-thirds of the way from Madagascar to Antarctica. The group's overall size is 372 km² (144 sq mi) in area and it has 101.9 km (63 mi) of coastline. Discovered in the mid-19th century, the islands lie on ???



Heard Island And McDonald Islands. Heard and McDonald Islands are a group of isolated, uninhabited sub-Antarctic volcanic islands that are situated in the southern Indian Ocean. The Heard and McDonald Islands are an external territory of the Commonwealth of Australia are located approximately midway between Australia and the continent of South Africa.

SOLAR PROFILE HEARD AND MCDONALD ISLANDS



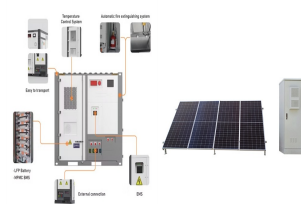
Heard Island and McDonald Islands are located in the Southern Ocean, approximately 1,700 km from the Antarctic continent and 4,100 km south-west of Perth. As the only volcanically active subantarctic islands they "open a window into the earth", thus providing the opportunity to observe ongoing geomorphic processes and glacial dynamics.



(? 1/4 ?Heard Island and McDonald Islands,? 1/4 ?HIMI),,1947,1997
(???)???HIMI1600???



Heard Island and McDonald Islands Heard Island and McDonald Islands are uninhabited, barren, Subantarctic islands in the Southern Ocean, far due south of India and roughly 400 km southeast of Kerguelen of the French Southern and Antarctic Lands.



McDonald Island is much smaller (2.5 km²), about 100 000 years old and totally ice-free, and is predominantly composed of phonolitic rocks. 9, 10 During the campaign, signs of volcanic activity



L'isola Heard e le isole McDonald sono isole disabitate che si trovano nell'Oceano Antartico, a circa due terzi di distanza tra il Madagascar e l'Antartide. Esse costituiscono un territorio esterno australiano dal 1947 e contengono i due soli vulcani attivi presenti sul territorio australiano, uno dei quali (Mawson Peak) ? anche la montagna australiana pi? elevata, con 2.745 metri.

SOLAR PROFILE HEARD AND MCDONALD ISLANDS



HEARD AND MCDONALD ISLANDS AUSTRALIA Heard Island and the McDonald Islands are in the Southern Ocean, approximately 4,100 km south-west of Perth and 1,700 km from the Antarctic continent. Their distinctive conservation value is as one of the world's rare pristine island ecosystems which have virtually no ???



Heard Island and McDonald Islands are located in the Southern Ocean, approximately 1,700 km from the Antarctic continent and 4,100 km south-west of Perth. As the only volcanically active subantarctic islands they "open a window into the earth", thus providing the opportunity to observe ongoing geomorphic



The Territory of Heard Island and McDonald Islands [2] [3] (HIMI; [4] ISO 3166 region code: HMD, HM, 334; [5]) is an Australian external territory comprising a volcanic group of mostly barren Antarctic islands, about two-thirds of the way from Madagascar to Antarctica. The group's overall land area is 372 km² (144 sq mi) and it has 101.9 km (63 mi) of coastline.

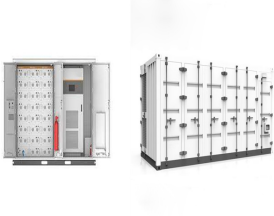


The Territory of Heard Island and McDonald Islands (abbreviated as HIMI) are an Australian external territory and volcanic group of barren Antarctic islands, about two-thirds of the way from Madagascar to Antarctica. The group's overall size is 372 square kilometres (144 sq mi) in area and it has 101.9 km (63 mi) of coastline. Discovered in the mid-19th century, they have been ???



OverviewHistoryGeographyWildlifeAdministration and economySee alsoFurther readingExternal links

SOLAR PROFILE HEARD AND MCDONALD ISLANDS



Due to the extreme isolation of Heard Island and McDonald Islands (HIMI), together with the persistently severe weather and sea conditions, human activities in the region have been, and remain, limited. Atlas Cove and other minor camps distributed across the island. Power is supplied by small diesel generators, solar cells and wind



McDonald Island is much smaller (2.5 km²), about 100 000 years old and totally ice-free, and is predominantly composed of phonolitic rocks. 9, 10 During the campaign, signs of volcanic activity



Heard Island is 43 km long and 21 km wide. McDonald Islands are a group of uninhabited rocky islets, 40 km west of Heard Island (Encyclopaedia Britannica 2006). Heard Island has approximately 362.5 km² of area and the McDonald Island, 2.6 km². The site includes the adjacent offshore rocks and shoals and all territorial waters to a distance of 12 nautical ???