

SOLARGIGA LOGIN MARSHALL ISLANDS



Who is solargiga energy? Company Overview-Solargiga Energy Holdings Limited. Solargiga Energy Holdings Limited ("Solargiga Energy"; stock code: 00757.HK) is a well-known photovoltaic module manufacturer. Founded in 2000, Solargiga Energy integrates research&development, production, sales&marketing and application.



How many employees does solargiga energy have? Solargiga Energy employs more than 4,000 staff worldwide, and has production bases located in Jinzhou (Liaoning), and Yancheng (Jiangsu). We have won more than 300 national patents, and over 50 provincial and municipal scientific awards including first-class awards, second-class awards and achievement awards.



What is solargiga's development philosophy? Solargiga sticks to the development philosophy of Honesty, Innovation, Competition, Prominence, to build an international renowned enterprise by means of technology innovation, regulating management, strengthened quality, honest operation, and high-quality service, and to manufacture first-class products worldwide.



Why is solargiga a sustainable company? Sustainable for all, all for sustainability. Solargiga upgrades technology constantly, invests about 5% of its operating revenue in R&D and innovation every year on average, and drives future development through innovation. Based on advanced wafer, the current collection capability is more uniform.



Solargiga Energy Holdings Limited (incorporated in the Cayman Islands with limited liability) GLOBAL OFFERING Number of Offer Shares : 422,666,000 Shares (comprising 253,600,000 Shares offered by the Company and 169,066,000 Sale Shares subject to

SOLARGIGA LOGIN MARSHALL ISLANDS



Giga-P P-Type Products Sustainable for all, all for sustainability. Solargiga upgrades technology constantly, invests about 5% of its operating revenue in R&D and innovation every year on average, and drives future development through innovation. Technology Highlights High Efficiency, High Generation Based on advanced wafer, the current collection capability is more a?|



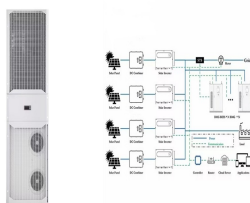
Contact Us Solargiga Energy Solargiga Energy Holdings Limited (Listed Company) Address: 1402 Harbour Centre, 25 Harbour Road, Wanchai, Hong Kong, China Tel: (852) 341-62000 Email: info@solargiga.com Jiangsu Yueyang Photovoltaic Technology Co., Ltd. Address: 777 Tangqiao Road, HTDZ, Jianhu County, Yancheng City, Jiangsu Province, China



Marshall Islands Company Registry a?? International Registries The Marshall Islands Companies Registry is the official registry responsible for the incorporation and maintenance of companies in the Republic of the Marshall Islands. It operates under the Marshall Islands Association Law, which governs the formation and operation of domestic and foreign corporations in the country.



CMI as an independent post-secondary education agency serving the needs of the Republic of the Marshall Islands. Skip to the content. College of the Marshall Islands. Username. Password. Remember Me Login. Lost your password? CMI as an independent post-secondary education agency serving the needs of the Republic of the Marshall Islands.



Solargiga Energy Holdings Limited, an investment holding company, manufactures and sells downstream photovoltaic modules for the photovoltaic industry in Mainland China, Japan, Europe, Asia, and internationally.

SOLARGIGA LOGIN MARSHALL ISLANDS



Contact Us Jinzhou Yangguang Energy Co., Ltd. i 1/4 ?Headquarteri 1/4 ?
Address: No. 1-5, Section 3, Chifeng Street, Eco& Tech Development
Zone, Jinzhou City, Liaoning Province, ChinaTel: (86)0416 508 1136Fax:
(86)0416 718 8277 Solargiga Energy Holdings Limited (Listed Company)
Address: 1402 Harbour Centre, 25 Harbour Road, Wanchai, Hong Kong,
ChinaTel: (852)3416 a?|



The Upward Bound Program is funded by a grant from the U.S.
Department of Education and administered by the College of the Marshall
Islands. The ultimate goal of the UB program is to assist high school
students with preparation for a?|



July 3-5, Bangkok, Thailand a?? ASEAN Sustainable Energy Week 2024
has commenced at the Queen Sirikit National Convention Center.
Solargiga Energy showed up at the V41 booth with four Giga series
efficient modules. Solargiga Energy brought three N-type TOPCon
modules and one P-type flexible module, covering large-scale ground
power stations, a?|



The Marshall Islands (Marshallese: a1?ajea,.), [5] officially the Republic of
the Marshall Islands (Marshallese: AolepA?n AorA?kin a1?ajea,.), [note 1]
is an island country west of the International Date Line and north of the
equator in the a?|



Solargiga Energy. Make the World a Better Place. Make the World a
Better Place. 0 years. One of the Most Reliable PV Manufactures. 0 GW.
Module Production Capacity. 200 + Authorized Patents. 0 + Global
Business Footprints. 0 years. One of the Most Reliable PV Manufactures.
200 + Authorized Patents. 0 + Global Business Footprints.

SOLARGIGA LOGIN MARSHALL ISLANDS



$\frac{1}{2}$ $\frac{1}{4}$ a?(C)a? $\frac{1}{4}$ a?(R)a?!a??a??a?,a? $\frac{1}{4}$
 a??2000a??a??a??a??a??a??a?3a?'a??a??a??a?|a??a??a??a?>>a?<<a??
 a?ca?,a?JPYa? $\frac{1}{4}$ a?<<a?<<a??a??a??a? $\frac{1}{2}$ a? $\frac{1}{4}$ a?(C)a? $\frac{1}{4}$
 a??a??a? $\frac{1}{4}$ a?3a?(R)a??a??a??a? $\frac{3}{4}$
 a??a??a??a??a??a?<<a??a??a? $\frac{3}{4}$ a??a??



$\frac{1}{2}$ $\frac{1}{4}$ a?(C)a? $\frac{1}{4}$ a?(R)a?!a??a??a?,a? $\frac{1}{4}$
 a??2000a??a??a??a??a??a??a?3a?'a??a??a??a?|a??a??a??a?>>a?<<a??
 a?ca?,a?JPYa? $\frac{1}{4}$ a?<<a?<<a??a??a??a? $\frac{1}{2}$ a? $\frac{1}{4}$ a?(C)a? $\frac{1}{4}$
 a??a??a? $\frac{1}{4}$ a?3a?(R)a??a??a??a? $\frac{3}{4}$ a??a??a?? a?|



Ideally tilt fixed solar panels 7° South in Majuro, Marshall Islands. To maximize your solar PV system's energy output in Majuro, Marshall Islands (Lat/Long 7.091, 171.3765) throughout the year, you should tilt your panels at an angle a°|



Venturing into the financial landscape of the Marshall Islands presents a unique set of opportunities and challenges, particularly for digital entrepreneurs and international business owners seeking to navigate its waters.. With my extensive background in global finance and firsthand experience with Pacific Island economies, I understand the complexities that a°|



Intelligent Manufacturing Jinzhou, Liaoning The Jinzhou production base has an annual production capacity of 2 GW, adopts a big data cloud management model with intelligence as the core, and has a world-class manufacturing level. Watch a°|

SOLARGIGA LOGIN MARSHALL ISLANDS



As one of the small island developing States (), it has played a significant role in international climate action. Under the Paris Agreement of 2015, the Marshall Islands was instrumental, along with other SIDS, in advocating strongly for the inclusion of the 1.5 C temperature goal.. The nation also submitted one of the first Nationally Determined a?|



The Republic of the Marshall Islands (RMI) is situated nearly midway between Hawaii and the Philippines, and is the easternmost island group in Micronesia. The country consists of two parallel chains of atolls and islands in the central Pacific Ocean, known as the Ratak (Sunrise) chain and Ralik (Sunset) chain. Together, the RMI is comprised of



Recently, Solargiga Energy's Giga series PV modules received MyHIJAU Mark in Malaysia, signifying authoritative recognition by the Government of Malaysia and demonstrating the quality and environmental performance of the. Read More >> Solargiga Energy's Giga-N Series Modules Passed ECS Certification



Giga-N N-type Products From 1 to N, Revolutionary-Proven. Solargiga is committed to innovation. The company accelerates the innovation of N-Type TOPCon technology by providing a comprehensive product portfolio catering to almost all PV scenarios. High Efficiency, High Power Multi-Busbar bifacial PERC technology with more current collection. Half-cell design reduces a?|



Solargiga sticks to the development philosophy of Honesty, Innovation, Competition, Prominence, to build an international renowned enterprise by means of technology innovation, regulating management, strengthened quality, a?|