

# SOMALIA SOLAR ASSISTANT JK BMS



How accurate is solarassistant BMS? Let SolarAssistant perform it's own state of charge (SoC) calculation by counting power flowing in and out of the battery. This is a good fallback option for anyone who can't get a real BMS reading. It's less accurate than a Victron BMS but much more accurate than the standard voltage based readings of an inverter.



Can comms re-emulate BMS SoC? Comms isn't the be-all and end-all, and few devices (if any) exist that can re-emulate BMS SOC from disparate sources or change source/destination protocols (Like cloudlink can do for hubble) That said solar assistant can manage the SoC over time limits similarly to time-of-use settings without the charge source switching.



Are BMS compatible? The BMSs are compatible but not when different capacities are involved. I will post this in the Showcase section next week. I had the opportunity to use a smart shunt but not required in my case.



Couple last days I spent to try connect my BMS from JK 2A14S15P with Anern inverter. It doesn't matter what I try everything what I do it didn't work. I have 2 converter from RS to USB. Both of them don't work with this BMS. Even i try to connect BMS with computer or inverter or Rpi (solar assistant). Bluetooth works.



I do (I don't have JK BMS though). I have it connected using the Victron cable to my Solar Assistant Raspberry Pi. It works and was easy to set up but there are some issues with the data in SA. The battery dashboard shows the data from the Victron Smart Shunt correctly but not all the data is making it to the charts tab, e.g.



Don't think jk bms support pylontech. Solar Assistant will have to do. It does provide battery info but not accurate of course. B. birc New Member. Joined Feb 8, 2023 Messages 1 Location KATOWICE. Feb 22, 2023 #136 Hi i just finish setup my connection with inverter must pv1800 and bms jk

# SOMALIA SOLAR ASSISTANT JK BMS

---

8s

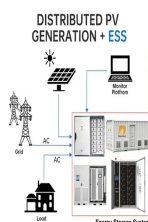
# SOMALIA SOLAR ASSISTANT JK BMS



Future plans is to allow a mix of JK-BMS and JBD/Overkill to be slaves, currently just JK-BMS in the Alpha stage. Solar assistant and ESP32 during setup work I want to thank Uksa007 for his work, it looks very solid now and im comfortable ???



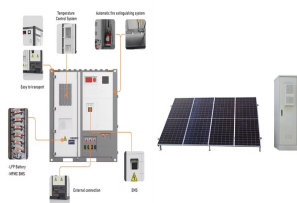
I have a JK-B2A20S20P BMS in my battery room but I want to extend the Bluetooth signal. Is there a way to do this? Solar Enthusiast. Joined Apr 26, 2022 Messages 566. Make sure you get one natively supported in home assistant. The esp32 talks to the BMS with bluetooth and relays that information to home assistant via wired or wireless



The new JK PM BMS is not yet supported by these solutions, my JK PB BMS is on 15.17 and I connect to it via Wifi using a HiFlying EW11 with a Virtual Serial port on the PC so I can connect and monitor the batteries anywhere on the local Lan. Once one of your solutions adds the JK PB BMS I will try them out.



It's less accurate than a Victron BMS but much more accurate than the standard voltage based readings of an inverter. USB Daly UART/RS485: Daly BMS UART/RS485 Deligreen BMS UART/RS458 Heyo BMS UART/RS458: USB ???



Monitor JK BMS with Solar Assistant? @Nami It would be really good if you guys could provide a simple TTL/USB converter with the right connector for the BMS, so one can skip the RS-485 conversion. Or even just a connector with wires so one can attach a third party TTL/USB converter.



Is the JK BMS need to plug on the Esp32 before the AP appear cause it finish download but the AP doesn't appear. View attachment 166096 It stays connected up to an hour this way, based on Solar Assistant data (since the battery SOC will display as 100% when connected due to the

# SOMALIA SOLAR ASSISTANT JK BMS

---

UART BMS displaying 360%)., after that it will disconnect

# SOMALIA SOLAR ASSISTANT JK BMS



Connecting the JK inverter BMS Overview. This guide is for the newer JK inverter BMS, also known as the JK PB BMS range. See our original JK BMS guide if you have their older original BMS. Battery communication cable. Use a Seplos ???



current setup- CAN bus from SOK server rack to SOL-ark-15k. RS485 from SOL-ARK-15k to Solar-assistant. The solar-assistant picks up on basic battery information from the BMS- voltage, temp etc. can people share their setups where they get the pack level information from the BMS straight to



Typically the right two RJ45 jacks are used for battery to battery communications. The middle RJ12 jack is for Computer (or Solar Assistant) communications and the left RJ45 jacks (RS485 and CAN) are used for Master BMS to Inverter communications. The JK BMS manual counts pins on the double RJ45 jacks from left to right as pin 1 though pin 16.



Connecting the JK inverter BMS Overview. This guide is for the newer JK inverter BMS, also known as the JK PB BMS range. See our original JK BMS guide if you have their older original BMS. Battery communication cable. Use a Seplos RS485 BMS cable. If you are creating your own cable, note that RS485B on pin 1 and RS485A on pin 2. BMS port - Option 1



Dup?? conectare ??i la portul USB de la Raspberry PI vom putea selecta ?n Solar Assistant protocolul USB JK RS485 ??i apoi adaptorul (USB USB Serial), dup?? care vom putea ap??sa pe Connect. ?n imaginea de mai jos am 2 BMS-uri conectate simultan (USB1 USB Serial ??i USB2 USB Serial).

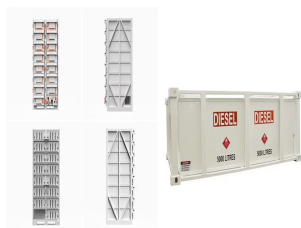
# SOMALIA SOLAR ASSISTANT JK BMS



Open Solar Energy. Joined Nov 28, 2022 Messages 983 Location Belgium. Oct 1, 2024 #2,102 When you see Became unavailable it means that Home Assistant can no longer receive the information, BMS model : jk-pb2a16s20p BMS protocol : BLE RS485 board : ???



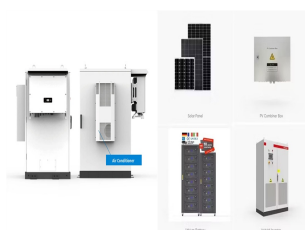
But i run into similar problems as with the JK bms. I realise that rs485 does not mean modbus compatible. I found a custom wifi dongle that has tcp modbus among other options. wifi bms This might work for the Daly bms in the forklift (forklift is always in wifi signal when charging) But the JK is mounted in a camper van, so wifi is not a good



Troubleshooting. Are you seeing the page below when accessing your site? This guide will help you identify the root cause of the problem. The inverter and battery connection does not affect whether your site is reachable so you don't have to spend any effort on adjusting it. SolarAssistant continues to monitor your inverter and battery regardless of whether the network and internet is



It's currently connected to solar assistant via USB. G. goldserve Solar Enthusiast. Joined Apr 26, 2022 Messages 557. Oct 29, 2024 #2,278 You do need one other JK BMS connected via BLE or RS485 or UART TTL for the YAM BMS to function. Reactions: Fahmula. G. goldserve Solar Enthusiast. Joined Apr 26, 2022 Messages 557.



Solar assistant will see multiple JK's at a time. You can use the Smart shunt as a stand alone to verify/confirm the bms/Solar assistant data. JK's can be dialed in for very accurate SOC. As far as I know bms brand mixes or bms plus shunts won't work together with Solar Assistant.

# SOMALIA SOLAR ASSISTANT JK BMS



Configuration CAN bus CFE battery Daly BMS Dyness / Mecer EG4  
Felicity Solar Giter JK BMS JK inverter BMS JBD / Overkill BMS Revov  
Seplos BMS Shoto BMS SOK SolarMD SunSynk Trophy Vestwood. Grid.  
Home Assistant. Setup Broker setup Energy dashboard Adjusting solar  
settings. Integration. MQTT API Node-RED. Software updates. Overview  
Changelog



ESP32 and ESP32-S3 can connect to max 3x ble\_client but in reality if I  
take the example of JK-BMS it is possible to supervise max 2x BMS  
without having problems. Concerning Seplos, the only solution to connect  
it to YamBMS is via RS485. More information about the component used  
for Seplos.



Hi everybody im thinking about making a new battery pack of 72v 100ah I  
heard that Jk Bms are better than Daly but between JK bms with  
Bluetooth or Jia Forums. New posts Registered members Current visitors  
Search forums Members. What's new. Solar Enthusiast. Joined Jan 2,  
2021 Messages 585. Oct 2, 2023 #2 I have both BMS's.



Changelog. The releases below list the software changes introduced when  
you update your device. Read more about our beta program if you want to  
experiment with the latest features. 2024-12-20 Beta. New features:  
Support sourcing grid price data from Octopus Energy.; Support selecting  
a NordPool area (GER, SE1, etc.) and currency. Support Senergy,  
Salvare and ???



We recommend using a battery BMS cable or the Emulated BMS.  
Emulated BMS: Let SolarAssistant perform it's own state of charge (SoC)  
calculation by counting power flowing in and out of the battery. This is a  
good fallback option ???



# SOMALIA SOLAR ASSISTANT JK BMS



Warning! Do not use Auto CCL and DCL functions with JK-PB and new JK-B see this issue. We will find a solution with @MrPablo before releasing YamBMS 1.5.1. Regarding the Atom S3 black screen with esphome > 2024.7.3, @Der\_Hannes found the problem ????



The JK Inverter BMS manual has the CAN and RS485 ports mislabeled. I set the BMS CAN setting to Pylontech and set the 6000XP in li-ion mode with pylontech "2" as the make/model then plugged into the 2nd port to the right of the brown "relay connector" on the BMS communications board. View attachment 202307



Configuration CAN bus CFE battery Daly BMS Dyness / Mecer EG4 Felicity Solar Giter JK BMS JK inverter BMS JBD / Overkill BMS Revov Seplos BMS Shoto BMS SOK SolarMD SunSynk Trophy Vestwood. Grid. Eskom Europe. Home Assistant. Setup Broker setup Energy dashboard Adjusting solar settings. Integration. MQTT API Node-RED. Software updates



I am trying with USB to TTL (FT232BL chip) and B2A8S20P-HC model. i can successfully send the TX data through python script (similar to grafana). But, nothing/ blank in return. any one successfully read the BMS through FT chip?. Using CAN/ RS485 port and RS485 enabled in app Rx->Tx and Tx->Rx



if u have a device to take data from jk to Solar assistant conected on jk bms u can connect this on BT. the mqtt service will be available so u can send data interface directly. u can make the small interface only with can port. What is ur inverter? W. wongyan19 New Member. Joined Jun 2, 2021