

SOUTH GEORGIA AND SOUTH SANDWICH ISLANDS QUALITY ENERGY SOLUTIONS



Should the South Georgia & South Sandwich Islands have a no-take marine area? Scientists and governments are calling for large no-take marine areas, free from industrial exploitation. The South Georgia and South Sandwich Islands Marine Protected Area is undergoing its second five-yearly review. Recovery of baleen whales coupled with climate change, means managers must be alert to alternative future ecosystem states.



Who owns South Georgia and the South Sandwich Islands? The United Kingdom claimed sovereignty over South Georgia in 1775 and the South Sandwich Islands in 1908. The UK Overseas Territory of South Georgia and the South Sandwich Islands (SGSSI) was formed in 1985, whereas previously it had been governed as part of the Falkland Islands Dependencies.



What is the future of South Georgia & the South Sandwich Islands? The future management of South Georgia and the South Sandwich Islands For more than two centuries, exploitation of the wildlife of South Georgia and the South Sandwich Islands has provided revenue, albeit interrupted as serial overharvesting has destroyed stocks, in some instances taking species to the verge of extinction (see Introduction).



Are the South Sandwich Islands a natural resource? There has been little attempt to explore and exploit the South Sandwich Islands for natural resources in comparison with the neighbouring waters of South Georgia, which saw both the boom and bust of the whaling and seal fur industries in the early 20 th century.



What happened to South Georgia and the South Sandwich Islands? In 1985, South Georgia and the South Sandwich Islands ceased to be administered as a Falkland Islands Dependency and became a separate territory. The King Edward Point base, which had become a small military garrison after the Falklands War, returned to civilian use in 2001 and is

SOUTH GEORGIA AND SOUTH SANDWICH ISLANDS QUALITY ENERGY SOLUTIONS



now operated by the British Antarctic Survey.

SOUTH GEORGIA AND SOUTH SANDWICH ISLANDS QUALITY ENERGY SOLUTIONS



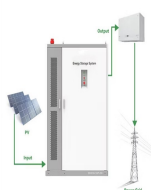
What is the ccTLD for South Georgia and the South Sandwich Islands?
The Internet country code top-level domain (ccTLD) for South Georgia and the South Sandwich Islands is .gs. The parts of the islands that are not permanently covered in snow or ice are part of the Scotia Sea Islands tundra ecoregion.



South Georgia and the South Sandwich Islands (SGSSI) is a British Overseas Territory in the southern Atlantic Ocean. It is a remote and inhospitable collection of islands, consisting of South Georgia and a chain of smaller islands known ???



The Islands. South Georgia lies 1300 km SE of the Falkland Islands, and the South Sandwich Islands (SSI) a further 760 km SE, both between latitudes 53° 58' ??? 54° 53' S and longitudes 35° 47' ??? 38° 01' W. The territory comprises ???



Maps of South Georgia and the South Sandwich Islands. Maphill is a collection of map images. This image combines a physical map with the globe centered on South Georgia and the South ???



Summary. Welcome to our South Georgia & Antarctic Odyssey featuring the South Sandwich Islands expedition.. On this epic voyage, not only will you explore the famed white continent, discover the Falklands~Malvinas, ???

SOUTH GEORGIA AND SOUTH SANDWICH ISLANDS QUALITY ENERGY SOLUTIONS



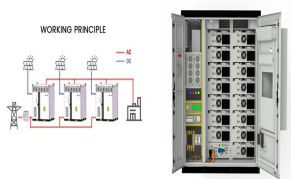
Atmospheric dispersion and air quality Space Applications and
Nowcasting Ensemble forecasting Energy Event management Media
Water Data Data. Weather and climate data Search for ???



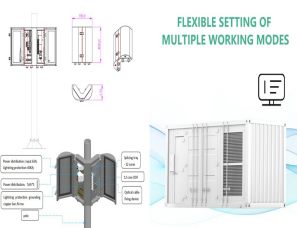
SERVODAY is revolutionizing the energy and manufacturing sectors in
South Georgia and the South Sandwich Islands with its innovative
biomass turnkey solutions. From the highly portable ???



During the southern hemisphere winter, sea ice extends across the BAT to
encompass the South Shetland Islands, South Orkney islands and much
of the South Sandwich Islands (though not South Georgia). It has a major
modifying ???



This map of South Georgia and the South Sandwich Islands is provided by
Google Maps, whose primary purpose is to provide local street maps
rather than a planetary view of the Earth. ???



A wet day is one with at least 0.04 inches of liquid or liquid-equivalent
precipitation. The chance of wet days in Grytviken varies throughout the
year. The wetter season lasts 5.9 months, from ???

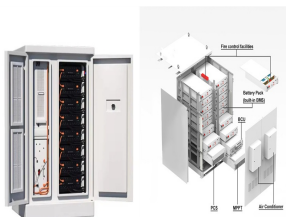
SOUTH GEORGIA AND SOUTH SANDWICH ISLANDS QUALITY ENERGY SOLUTIONS



Afrikaans: South Georgia and the South Sandwich Islands Afrikaans: Suid-Georgia en die Suidelik Sandwicheilande Afrikaans: Suid-Georgie en die Suidelike Sandwicheilande Afrikaans: Suid-Georgi? en de Suidelike ???



South Georgia and the South Sandwich Islands are a United Kingdom Overseas Territory located in the South Atlantic Ocean. Geography . The SGSSI are a group of sub-Antarctic islands, located in the South Atlantic ???



The designation aims to support "environmental recovery and resilience through world-leading evidence-based sustainable management. The Government of South Georgia and the South Sandwich Islands



Renewable Energy at King Edward Point Research Station . We are planning to decarbonise our Antarctic stations by 2030, including King Edward Point Research Station, owned by the Government of South Georgia and the South ???

SOUTH GEORGIA AND SOUTH SANDWICH ISLANDS QUALITY ENERGY SOLUTIONS



This Order extends the boundaries of South Georgia and South Sandwich Islands, so as to include, as territorial sea, the sea within twelve nautical miles of the baselines, together with its ???



General Information. Capital: King Edward Point Other Main Settlements: Grytviken, Stromness (now abandoned) Currency: British Pound
Language: English Population: Around 30 temporary residents, no permanent population. ???