

SPECIFICATIONS AND MODELS OF WIND TURBINE BRUSH HOLDERS



What are carbon brushes & brush holder systems for generators & pitch systems? Our carbon brushes and brush holder systems for generators and pitch systems support turbine and generator manufacturers in the onshore and offshore sectors in achieving their goals. Carbon brushes from Schunk perfect the power transmission of slip rings of doubly-fed asynchronous generators (DFIG).



Why do you need a carbon brush holder system? As a long-standing development partner to the wind industry, we set technological standards worldwide. Our carbon brushes and brush holder systems for generators and pitch systems support turbine and generator manufacturers in the onshore and offshore sectors in achieving their goals.



What are brush holder systems used for? We supply brush holder systems to many applications worldwide across a broad spectrum of industries including power generation, marine, clean water, transportation, industrial and leisure sectors. Lightning grounding, shaft grounding, power transmission, signal transmission.



What types of brush holders are available? Our range of brush holders come with a general purpose grade of either copper graphite or silver graphite brushes, application specific grades are available as an option. In Renewables, designs include those for power generation, lightning protection, earthing, pitch control, yaw, anti-icing, de-icing and signal/data transmission applications.



What is a grounding brush holder? Grounding brush holders are the perfect complement to our grounding brushes. They are designed to exactly match the grounding brushes you need. By aligning the grounding brushes correctly at all times, capacitive currents can be eliminated even under extreme conditions and at high frequencies.

SPECIFICATIONS AND MODELS OF WIND TURBINE BRUSH HOLDERS



Why should you choose a wind turbine brake lining? With this excellent lightning protection, you reliably minimize damage, repair expenses and downtime of your wind turbine. A major advantage of our brake linings is that they do not glaze - effectively preventing squeaking noises during braking.



From immense turbines harnessing the power of the wind to the precise instruments used in medical equipment, the historical context of slip rings and carbon brushes is one of continuous improvement and sophistication, mirroring the trajectory of the broader advancements in engineering and materials science.



Carbex manufactures wind power carbon brushes for every type of wind turbine and generator on the market, regardless of climate conditions. Carbex also supplies brush holders for grounding. In those cases where galvanic currents pass through motor's bearings they can damage them. The grounding brushes' most important function is to



Part No. SPC100425-06. Generator Brush AC-53. Brush Size T (Thickness / Tangential mm) 32 OEM Gamesa; Brush Size A (Width / Axial mm) 20 Platform(s) Brush Size R (Radius / Radial mm) 75 Contact Face Radius (mm) 142 Brush Type Generator Brush; Typical Industry Used In Wind; Brush Grade AC-53; Terminal Gap (mm) 8.9 Material Type Copper Graphite; OEM Part a?]



Special specifications and structure, please provide drawings or samples commonly used various sizes and models of carbon brushes, if there are special requirements, please note so that specify them in contract . 5. How to select brushes -according to the motor feature to choose grade of carbon brush -according to box size of brush holder

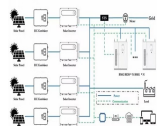
SPECIFICATIONS AND MODELS OF WIND TURBINE BRUSH HOLDERS



Holders. Holders; Carbon Vanes; Orders; Maintenance; Contact; News; We manufacture light weight carbon brushes that are more economical and longer lasting and simply ideal for any make or model of wind turbine. We manufacture locally in Belfast carbon brushes for wind turbines. Each carbon brush is made to order with fast turnaround on



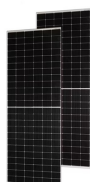
Carbon brushes from Schunk perfect the power transmission of slip rings of doubly-fed asynchronous generators (DFIG). Thanks to our extensive materials know-how, we can offer reliable standard solutions for OEMs and more extensive, customized developments for end customers for the respective locations and the associated requirements: Whether low or high a?]



CG626 Copper Graphite Carbon Brush For Wind Turbine Brush 1. Products description: 1). Item name: CG626 Copper Graphite Carbon Brush For Wind Turbine Brush 2). Model: CG626, CZ01,CW54/RC53,MK20,M8295,M9426,EG34D,BG469 3). Size: 20x40x100mm, also can according to customed sizes. 4).



The other option is to have stationary brushes with a center core that rotates, making contact with the brushes. The choice will depend on the wind turbine specs and unique requirements. Choosing a Slip Ring for Your Wind Turbine. Selecting wind turbine slip rings can be overwhelming, especially if it is your first time.

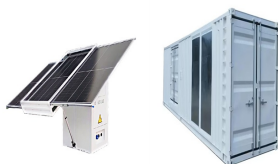


Our carbon brushes for wind turbines are specifically designed for the requirements of the on- and offshore sectors. We precisely tailor the materials of our carbon brushes to the conditions of the site to ensure high thermal and a?]

SPECIFICATIONS AND MODELS OF WIND TURBINE BRUSH HOLDERS



A wide range of brush holders which come as models with extension-, spiral or self-recoiling spring specific pressure of 14-42 kPa, for electric machines with commutators and slip rings. Versions also for traction motors and for the increased corrosion resistance. Brush holders; Slip Rings; Components for wind power generators +420 739 573



The diameter and size is a function of the rotor current. Variants up to 1500 amperes exist. Intelligent brush holder systems support the brushes in their function. Massive and stable, cast brush holders are the current state of the art. Referring to them as "intelligent" means that the holders have a brush wear monitoring device included.



Built upon the technology of its predecessors, GE Vernova's 3 MW onshore wind turbine platform is adaptable to a full spectrum of wind regimes. Our 3 MW turbines range from 3.2 to 4.2 MW power output, and includes the 4.0-137, a?]



So you can shape the energy production of the future, we supply just what you need in the field of wind turbines for current and data transmission: specific carbon brush grades, tailor-made and fully fitted brush holders, additional components for your slip-ring systems.



A new state-of-the-art prevention system for keeping the turbine running, i-BRUSH continuously monitors the wind turbine brush for maintenance. Utilizing integrated sensors in the carbon brush and linking to an external control unit, i-BRUSH enables maintenance staff to check the brush condition safely, any time and anywhere, from a smartphone or PC .

SPECIFICATIONS AND MODELS OF WIND TURBINE BRUSH HOLDERS



Wind Turbine Slip Rings ; Wind Turbine Spare Parts ; Pancake Slip Rings
Brush Holder, Double Leg Calliper With Brushes. OEM Vestas;
Platform(s) V52, V80 Mk 0-6; MW 0.85MW, 2MW; OEM Part No 753247;
Bore Size Mounting Hole (mm) 22; Brush Size A (Width Data sheet.
Share this page. Specifications. Enquire today. Call us today on +44 (0



Wind Turbine Slip Rings ; Wind Turbine Spare Parts Part No. SA4124-01.
120Amp Lightning Brush Holder. MW 1.3MW; OEM Part No
A9B00080778; OEM Siemens; Platform(s) SWT1.3; Brush Size A (Width /
Axial mm) 32; Brush Size T (Thickness / Tangential mm) 16; Brush Size R
(Radius / Radial mm) 0; Data sheet. Share this page. Specifications.
Material



Part No. SPC100425-03. Generator Brush AC-53. Brush Size T
(Thickness / Tangential mm) 40 OEM Gamesa; Brush Size A (Width /
Axial mm) 20 Platform(s) Brush Size R (Radius / Radial mm) 42 Contact
Face Radius (mm) 160 Brush Type Generator Brush; Typical Industry
Used In Wind; Brush Grade AC-53; Terminal Gap (mm) 6.5 Material Type
Copper Graphite; OEM Part a?]



The problems are found to be in the existing brushes, brush holders, and
rigging. The holders are fabricated from stamped metal plates and spot
welded in place, and they are only about half the length if the brush is
encased or supported. Fig. 2 displays a wind turbine generator brush with
the labor-saving EZ connector. In field testing the



We offer tailored solutions and can supply exactly what you need in the
field of wind turbines. From specific carbon brush grades to tailor-made
and fully fitted brush holders. S D Carbons also manufacture an extensive
range of high a?]

SPECIFICATIONS AND MODELS OF WIND TURBINE BRUSH HOLDERS



Applications in wind turbine technology. Rotating power transmission in wind turbines; Pitch adjustment (alteration of rotor-blade angle) Lightning protection and grounding (current conduction) Our solutions. Double leg brush holders with adjustably fitted carbon brushes, brush holders with clamps and matching carbon brushes; Our services



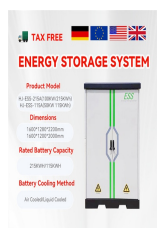
We supply our Holders to the Railways, Marine Industry, Wind Mills Turbine producer companies, Oils & Gas refineries, Defense industry, Steel industry and many more. Highly professional establishment with improved and new theme a?|



K14Z3 wind turbine lightning protection carbon brush and brush holder 1. Products description: 1). Item: K14Z3 wind turbine lightning protection carbon brush and brush holder 2). Model: K14Z3 3). Size: 20X32X64mm, 40x 36x 70mm, also can according to customed sizes. 4).



Our stocked range includes a variety of O.E.(Original Equipment) and A.M. (After Market) wind market products including composite Paratec(R), single and double-leg caliper styles, as well as both cast and fabricated body constant force holders for heavier duties and higher speeds.Replacement removable spring clip and cassette units are also available for many of a?|

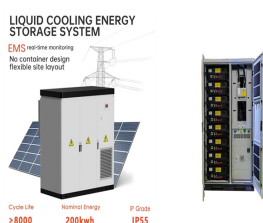


We design and manufacture a wide range of well-engineered, robust light-weight, corrosion resistant brush holders for use across a broad spectrum of industries including power generation, marine, clean water, transportation, industrial, a?|

SPECIFICATIONS AND MODELS OF WIND TURBINE BRUSH HOLDERS



Power Generation Brush Holders Morgan Advanced Materials manufactures a wide range of high quality brush holders designed for use with our carbon brushes to achieve improved generator reliability. Our highly experienced local technical support network works closely with customers to select and align brushes and holders for optimum performance and minimal maintenance a?|



Wind Turbine Brakes. Yaw Brakes; Rotor Brakes; Mechanical Brakes; Electric Brakes; Wind Turbine Brake Pads. Organic Brake Pads; Sintered Brake Pads; Composite Brake Pads; Vestas Brush Holder, Double Leg Calliper With a?|



Durable Carbon Brush Holder for Wind Turbine Maintenance, Find Details and Price about Carbon Brush Holder for Wind Generator Carbon Brush Holder Manufacturer from Durable Carbon Brush Holder for Wind Turbine Maintenance - Changsha Aobo Carbon Co., Ltd. Bakelite brush holder: swallow brush holder, constant pressure brush holder etc. 7



The Siemens SWT-2.3-101 wind turbine model is especially suited to areas with low WIND TURBINE SPECIFICATIONS REPORT ARMOW WIND PROJECT November, 2012 Report No. 11-1151-0247 DOC044 Rev3 6 Figure 1: Basic Wind Turbine Generator Specifications The three 49 m blades of the Siemens SWT-2.3-101 wind turbine will generate electricity a?|



Wind Turbines: Function: Slip ring brushes are used to transmit current and signals between the wind turbine's rotor and generator. Advantage: They enable continuous rotation of the wind turbine while ensuring stable transmission of electrical energy and signals, enhancing efficiency and extending equipment lifespan. Medical Equipment:

SPECIFICATIONS AND MODELS OF WIND TURBINE BRUSH HOLDERS



Brush Holders Brush holders may be divided into two broad classes; one in which the brush is rigidly attached to a swivel arm, and the other in which the brush is free to slide in a supporting box. Slide-type holders are generally classified according to the angle at which the brush meets the collector. This may be: Radial When the brush centre



1. Products description: 1). Item: Wind Turbine Lightning Protection Carbon Brush and Brush Holder K14Z3 2). Model: K14Z3 3). Size: 20X32X64mm, 40x 36x 70mm, also can according to customed sizes.