

SPECIFICATIONS FOR PHOTOVOLTAIC PANEL INSTALLATION SPAN



What are the structural requirements for solar panels? Structural requirements for solar panels are crucial to ensure their durability, safety, and efficient performance. These requirements vary depending on the type of installation, such as rooftop or ground-mounted systems, as well as the specific location and environmental factors.



What are solar photovoltaic design guidelines? In addition to the IRC and IBC, the Structural Engineers Association of California (SEAO) has published solar photovoltaic (PV) design guidelines, which provide specific recommendations for solar array installations on low-slope roofs.



What are the Design & sizing principles of solar PV system? DESIGN & SIZING PRINCIPLES Appropriate system design and component sizing is fundamental requirement for reliable operation, better performance, safety and longevity of solar PV system. The sizing principles for grid connected and stand-alone PV systems are based on different design and functional requirements.



What are the design and engineering requirements for solar panels? These requirements vary depending on the type of installation, such as rooftop or ground-mounted systems, as well as the specific location and environmental factors. Proper design and engineering of solar panel structures must take into account several factors, such as wind loads, snow loads, and seismic forces.



How much does a flat plate solar thermal panel weigh? an appropriate system of mechanical lifting should be provided. Flat plate solar thermal panels can weigh up to 80 kg each when installing an integrated PV or solar thermal system, the underlay should always be checked for tears or other signs of damage and replaced as necessary.

SPECIFICATIONS FOR PHOTOVOLTAIC PANEL INSTALLATION SPAN



How much do solar panels weigh? This can include the weight of the panels, mounting system, and other related equipment, as well as additional loads from wind, snow, or seismic activity. Solar panels typically weigh between 30 to 50 pounds each, depending on their size and manufacturer. How do I calculate the structural load of solar panels on my roof?



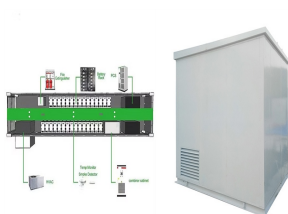
Tech Docs > SPAN Panel A smart electrical panel designed to modernize your home energy system by completely replacing your existing panel. Tech Docs: Panel Installation Manual (GEN2) Panel Drilling Template System Design Specs Panel Installation Guide. Contact us at support@span.io



Understanding Solar Panel Basics Solar Panel Components. To understand solar panel specifications, it's crucial to grasp the components that make up a solar panel. Solar Cells: Solar cells are the heart of a solar panel. They are made of semiconductor materials, usually silicon, that convert sunlight into electricity through the photovoltaic effect.



Solar panels range between \$0.75 per watt for lower efficient panels and \$1.50 per watt for premium solar panels. A 50-watt solar panel could cost anywhere from \$37.5 to \$75. How to choose the right 50-watt solar panel? Choosing the right 50-watt solar panel is vital to ensure your investment is worthwhile. Here are some key points to consider:



A SPAN Authorized Installer will visit your home to analyze your SPAN Panel install. 3. Installation day. SPAN Panel specs. Main breaker & bussing 100A - 200A main breaker with 225A bus Grid voltage 120/240 VAC, 60 Hz Circuit breakers Standard 1-in residential breakers Control 32 controllable circuits per panel Energy metering ? 0.5% accuracy.

SPECIFICATIONS FOR PHOTOVOLTAIC PANEL INSTALLATION SPAN



Installation Guides Brochures Module Clamp Reference Chart Rail Specs. Note: Same Price for Clear Anodized and Black Finish Rail . 2" Rail: Available in 130" and 172" lengths. 2" Tall by 1-1/2" Wide. 6 foot on center span. ???



Table 1: Solar panel cable for amp chart for 90°C (194°F) See also: How to install solar panels (Detailed Step-By-Step Guide) Are All Solar 10 AWG Wire Good Enough? Look for solar cabling with UL markings and other specifications on the outer sleeve with (UL) 10 ???



Solar panels are now an option for most homes. According to the Solar Energy Industries Association, more than 2 million PV installs are in the USA. The rapid growth is due to the many benefits these units bring. PV and solar panels help reduce your energy bills and combat the emission of greenhouse gases.



Additionally, SPAN and other solar power equipment qualify for the Federal Solar Investment Tax Credit (ITC). This program allows you to get a 30% tax credit back when filing your taxes in the year of your installation. For more information about SPAN installation and solar panel systems, reach out to our experienced team.



The PV module mounting system engineered to reduce installation costs and provide maximum strength for parallel-to-roof, tilt up, or open structure mounting applications. The POWER RAIL mounting system is designed with the professional PV solar installer in mind. The top-clamping rails utilize a single tool with a revolutionary

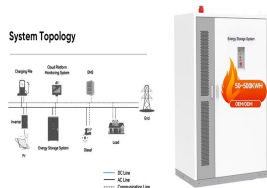
SPECIFICATIONS FOR PHOTOVOLTAIC PANEL INSTALLATION SPAN



The PV panel s shall be provided with performance warranties that guarantee the panels will produce at least 80% of the rated power after 25 years. (6) The PV panels shall be provided withat least 10-year product warranty. (7) The PV panels shall be installed according to the manufacturer's recommendation.



46. Solar Panel Life Span Calculation. The lifespan of a solar panel can be calculated based on the degradation rate: $L_s = 1 / D$. Where: L_s = Lifespan of the solar panel (years) D = Degradation rate per year; If your solar panel has a ???



The multifunctional properties of photovoltaic glass surpass those of conventional glass. Onyx Solar photovoltaic glass can be customized to optimize its performance under different climatic conditions. The solar factor, also known as "g-value" or SHGC, is key to achieve thermal comfort in any building. Onyx Solar's ThinFilm glass displays a solar factor that ranges from 6% to 41%, ???



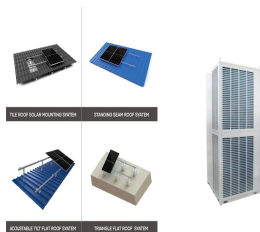
Visit this page to learn more all the specs associated with the SmartFlower solar panel including cooling features, physical and safety specs.

Products; Commercial; Dealer; Company; Testimonial; Installation: 4 fastening points earth screws or concrete foundation: Clear space ~16ft3: Weight ~1,550lbs / 703kg:



The QuadCore insulated roof panel can offer U-values as low as 0.25 to 0.12 W/m2K, depending on specification, whilst the output of the solar PV module is 310 Wp. In addition to speeding up installation, the single ???

SPECIFICATIONS FOR PHOTOVOLTAIC PANEL INSTALLATION SPAN



Tech Specs of On-Grid PV Power Plants 4 10. The successful bidder shall arrange an RFID reader to show the RFID details of the modules transported to sites, to the site Engineer in charge up to their satisfaction, which is mandatory for the site acceptance test. 11. Each PV module used in any solar power project must use a RF identification tag



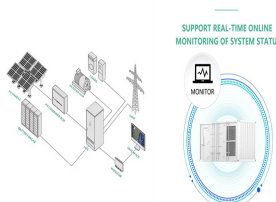
During installation, solar panel engineers should follow best practices like proper site selection and optimal inclination angle to maximize the energy output. For ease of maintenance and reduced safety risks, there ???



Look up the table "Uplift Span Lengths" and using the "Up" plf and "Side" plf load combinations to choose the maximum span length. Cantilever (overhang) lengths can be up to 33% of the span length. For example, a 9 foot span length can have a 3 foot cantilever.



It is important to understand the basic structural requirements for solar panels before getting into the details of sizing solar panel components. Wind, snow, earthquakes, and the weight of the solar panels themselves are ???



Factory direct Solar Mounting Rails SPC-R001 for solar panel installing projects, light in weight, quick and labor effective . Solar Panels Installation. Contact by Email. Overview; Specifications; FAQ; Following is specification details for PV module grounding clip model No. SPC-R001 : ??? AL6005-T5, anodized material;

SPECIFICATIONS FOR PHOTOVOLTAIC PANEL INSTALLATION SPAN



Aluminium frames are a crucial component of solar panels, providing structural support and protecting the delicate photovoltaic cells. Understanding the technical specifications of aluminium frames is essential for selecting the right frames for your specific solar installation. This article delves into the key specifications to consider when choosing aluminium frames for ???



INSTALLATION MANUAL. IEC & UL version . The Honey/Allmax Module TSM-PC05A TSM-PC05A.05 TSM-PC05A.08 TSM-PD05 ??? Specifications included in this manual are subject to change without prior notice. 2. SAFETY PRECAUTIONS ??? Potentially lethal DC voltages can be generated whenever PV Modules are exposed to a light source herefore,, t



Look up the table "Uplift Span Lengths" and using the "Up" plf and "Side" plf load combinations to choose the maximum span length. Cantilever (overhang) lengths can be up to 33% of the ???

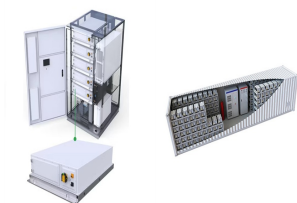


Refer to the detailed span tables and certification letters on our resources pages for more precise design specifications. Get Letters. XR RAIL(R) DOCUMENTATION. XR Rail(R) Tech Brief. XR10(R) Cut Sheet. structural performance of roof attachments for above roof mounting of photovoltaic (PV) modules and panels, and the mechanical and structural



Let's see its specifications and main features. Specifications Product Name eufy Solar Panel Charger Positioning eufyCam accessory of continuous charging for eufyCams and solocams Warranty 12 Months Product Weight 0.69lb (315g) Product Dimension 7.33x4.56x10.04in (186.0x115.8x25.5 mm) Adapted models eufyCam, eufyCam E, eufyCam 2C/2C Pro, ???

SPECIFICATIONS FOR PHOTOVOLTAIC PANEL INSTALLATION SPAN



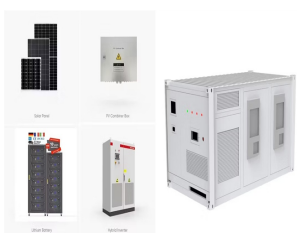
The most important solar panel specifications include the short-circuit current, the open-circuit voltage, the output voltage, current, and rated power at 1,000 W/m² solar radiation, all measured under STC.. Solar modules must also meet ???



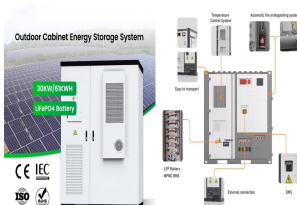
Photovoltaic (PV) glass is revolutionizing the solar panel industry by offering multifunctional properties that surpass conventional glass. This innovative material not only generates power but also provides crucial benefits like low-emissivity, UV and IR filtering, and natural light promotion. The most important aspect of PV glass for solar panels is its ability to ???



solar panel from a horizontal surface (Fig. 4). PV potential estimation is carried out with the following equations. As stated by Ref. [40]; total radiation (H_T) received by a given PV panel



Span Panel Installation Manual for 2nd Generation models (1-00800-xx)
.SPAN.IO . Span 1-00800-xx Installation Manual (rev. 2022-01-28) 2
PRODUCT SPECIFICATIONS All specifications and descriptions
contained in this document are accurate at the time of and control for
home loads, solar PV generation, energy storage, electric vehicle



??? IEC 61730: Photovoltaic (PV) module safety qualification ??? IEC
61277: Terrestrial photovoltaic (PV) power generating systems - General
and guide. B. Concentrating ??? IEC 62108: Concentrator photovoltaic
(CPV) modules and assemblies - Design qualification and type approval.