

# SQUARE TUBE SOLAR BRACKET ASSEMBLY DIAGRAM



How to understand solar mounting system's datasheet? When aiming to understand solar mounting system's datasheet, professionals must be wary of common pitfalls: **Overlooking Environmental Factors:** Ensure that the mounting system is suitable for the local climate and geography. **Ignoring Compatibility:** Check that the mounting system is compatible with the solar panels and the installation site.



What are the components of a solar mounting system? Solar mounting systems comprise several components: **Mounting Brackets:** These secure the solar panels to the mounting structure, ensuring stability. **Rails:** Rails provide a base for mounting the solar panels, acting as the backbone of the structure. **Clamps:** Clamps secure the solar panels to the rails, ensuring they are held firmly in place.



How to choose a solar mount system? For instance, roof mounts are suitable for residential buildings, while ground mounts may be ideal for large-scale solar farms. **Compatibility with Solar Panels:** The mounting system must be compatible with the dimensions, weight, and design of the solar panels to ensure a secure and stable installation.



What is a solar mounting system? **Bolts and Fasteners:** These are used to assemble and secure the entire structure, ensuring durability and stability. The solar mounting system specifications detail aspects such as material composition, weight, dimensions, load-bearing capacity, and resistance to environmental factors, providing crucial information for installation.



Why do solar panels need a mounting system? The mounting system not only serves as the structural foundation that holds the solar panels in place but also plays a pivotal role in ensuring that the panels are positioned optimally to capture maximum sunlight. Several factors must be taken into consideration when selecting a mounting system:

# SQUARE TUBE SOLAR BRACKET ASSEMBLY DIAGRAM



Why is interpreting solar mounting system specifications important? For solar installers, procurement managers, and EPC professionals, mastering the art of interpreting solar mounting system specifications translates to successful projects, cost-efficiency, and a reputation for reliability and expertise. As we conclude, it is important to recognize that the journey does not end here.



Galvanized steel clamp bracket for securing square tube against uplift. Useful for carports, sporting equipment and yard equipment for use with 18: ground screw. Hole for ground screw is 1 9/16"; holes for securing clamp to square tube.



6 Wire (4+2) Square Tube Jurassic Top Bend Bracket HDG with Black Slotted Insulator. ESQJ-6WTAHD/S: 6 Wire (4+2) Wire Square Tube Jurassic Top Tend Bracket HDG with White Slotted Insulator MTO. ESQJ-8BTAHD/S: 8 Wire

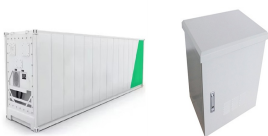
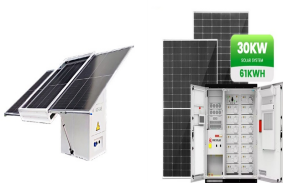


Fig. 2 Functional diagram of an evacuated tube collector, here: type Solar-Lux 6 = 6 tubes (type Solar-Lux 12 = 12 tubes) 1 Manifold 2 CPC mirror for optimum sunlight utilisation 3 Heat transfer medium tubes 4 Glass-glass evacuated tubes for optimum thermal insulation (It is possible to replace a tube without having to drain the system).

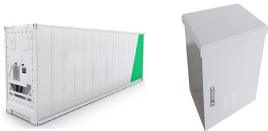


The PVC tube must be installed with the foundation. Solar Panel and Brackets Assembly. Before installing, Secure the solar panel bracket with no less than 6 bolts so the panel can't move. Ensure the bolts aren't penetrating the panel. Next, find the 4 gauge holes on top of the pole. Each hole is half an inch wide.

# SQUARE TUBE SOLAR BRACKET ASSEMBLY DIAGRAM



Choose from our selection of square tubing brackets, including bolt-together framing and fittings, press-fit framing and fittings, and more. In stock and ready to ship. [BROWSE CATALOG](#). These brackets have narrow slots compatible with quick-connect clamps for securing pipe and conduit on the channel side of struts without screws or tools.



Whether you're looking for top bend brackets, T-pole brackets, shield brackets, or pin brackets, you'll find a wide array of choices to suit your design preferences and functional requirements. Crafted from high-quality materials, these brackets ensure durability and longevity, providing reliable support for your square tube fences over time.



A solar module mounting bracket assembly includes a rail configured to support a solar module thereon, and a pair of braces. The braces each have a first end portion movably coupled to the rail. The braces are movable relative to the rail between a collapsed configuration and an expanded configuration. In the expanded configuration, the braces cooperatively define a ???



If your solar controller's terminals are not accessible when it is installed (like the Renogy controller we recommend), you may want to first connect your battery wires (making sure to run the positive line from the 20A ANL fuse (#7)), and then your solar panel wires to the solar controller before mounting the part. This way you can avoid having to unmount the controller to connect the wires.



Using our popular and versatile 25mm speedframe type square tube and square tube connector joints you can create bespoke benches, desking, workstations, shelving units, partitioning or display pieces the list is endless! Simply sketch ???

# SQUARE TUBE SOLAR BRACKET ASSEMBLY DIAGRAM



solar collector to a supporting surface and to make water connections from one collector to another. Hold-down strap is not included and must be ordered separately Use one (1) kit per collector. 1 Part No Qty 1 1/2" Qty 2" Description 10008-1 1 \_\_ Outlet header hold-down bracket assembly 10008-2 \_\_ 1 Outlet header hold-down bracket assembly



Square tube Jurassic brackets are used to erect an electric fence and are supplied with insulators. Available in hot dip galvanised, or hot dip galvanised and powder coated. The choice of a bracket should provide a good enough barrier to prevent a criminal from getting through or over the fence without triggering the alarm.



Square Tube Bracket for Wall Mounting. Support bar fitting for 20mm x 20mm tube, ideal for shower supports and interior. In stainless steel or chrome finish. Fork and Fork Assembly. Threaded Stud Assembly. Eye and Eye Assembly. ???



??????d ? @3p u? ae????????UZ?m ? ??ge??w???????? I \$  
 ??????.{??????O4?)1#sS 6A rD ? x "? TI R????@" ???& ? ??? 3/4 {ssS?

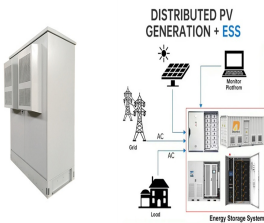


Photovoltaic module assemblies are mounted onto a solar tracker array torque tube via photovoltaic module brackets. The photovoltaic module brackets provide for stacking photovoltaic module assemblies in a nested configuration. The photovoltaic module assemblies are pre-assembled off-site, at a location different than the photovoltaic array installation site, ???

# SQUARE TUBE SOLAR BRACKET ASSEMBLY DIAGRAM



Where  $F_b, R_d$  is the design requirement for bearing resistance of the plate and pin,  $t$  is the thickness of the connected part,  $d$  is the diameter of the pin,  $A_E$  is the lower of the design strengths of the pin and the connected part, and  $\gamma_{M0}$  is the partial safety factor for calculating the resistance of members and cross-sections. The 1.5 factor in Equation 3 suggests a slightly ???



Set cross pipes or tubing in Top Cap grooves. Attach with 3/8" U-bolts, flange nuts, flat washers, and lock washers. Torque U-bolts to 15 ft-lbs and align assembly. Torque Top Cap set screws to 20 ft-lbs for Schedule 40 Grade B Pipe, 11 ft-lbs for 2.375" Allied Mechanical Tubing, and 16 ft-lbs for 3.500" Allied Mechanical Tubing.



Square Tube Shield T-Pole brackets are used to erect an electric fence and are supplied with insulators. Available in hot dip galvanised or powder coated. The choice of a bracket should provide a good enough barrier to prevent a criminal from getting through or over the fence without triggering the alarm.



Square Tube Shield Brackets are used to erect an electric fence and are supplied with insulators. Available in hot dip galvanised or powder coated. The choice of a bracket should provide a good enough barrier to prevent a criminal from ???



Complete Solar Water Heater Assembly All fittings are included in package. Open tube box and check for breakage by observing bottom of tube is silver, not cloudy, which indicates pressure loss. Not all gravity systems have reflectors. Figure 5: Box of evacuated solar tubes  
FreeFuelForever Gravity System Installation Manual.pdf 7

# SQUARE TUBE SOLAR BRACKET ASSEMBLY DIAGRAM



tubes installation and connection of the water heater piping. [ Frame mounting ] Solar water heater should be in the sunny square, ideally correct location - facing south. Use galvanized iron wire or expansion screws or cement and fixed the roof pad bracket under hard objects 3. Side rod Component 1. Bottom track (manifold) 2.



This allows for all materials used in any assembly to be re-used even on different structures. Tubes and connectors are not damaged during dismantling and re-assembly. Existing assemblies can be modified by simply releasing the connector, ???



collector's thermal efficiency. This efficiency measures the solar collector's ability to convert incoming solar radiation to usable heat in the form of a hot working fluid. This hot working fluid can be used for any application. The availability of solar radiation (energy) is dependent on weather, time of year, site shading, and



Apricus ETC Solar Collector Installation and Operation Manual - International Edition 1. Important Information 1.1. Scope of Manual a) This manual pertains only to the installation and operation of the Apricus ETC evacuated tube solar collector. Details for the installation, operation and maintenance of the complete solar system components