

# STABILITY ENERGY STORAGE DEVICE GENSHIN IMPACT



How do you unlock a research terminal in Genshin Impact? Acquiring the Energy Storage Device and unlocking the Research Terminal is part of the An Eye for An Eye Quest in Genshin Impact. Players must collect three Energy Storage Devices and use them on three different Terminals to remove the barriers blocking the Research Terminal.



Where can I find flying spheres in Genshin Impact? As mentioned earlier, you will find a few flying spheres as obstacles during this quest in Genshin Impact. If it chases you, run and hide behind the crystal wall. Place the storage device near the terminal to break the seal (Image via HoYoverse) Start by picking up any one of the nearby energy storage devices and go straight.



What are fixed storage and energy transfer devices? The Fixed Storage and Energy Transfer Device are devices used to power Energy Transfer Terminals in Fontaine in Genshin Impact 4.1. Learn about Fixed Storage and Energy Transfer Devices, as well as how to use them! What are the Fixed Storage and Energy Transfer Devices?



What is an eye for an eye World Quest in Genshin Impact? During An Eye for an Eye World Quest in Genshin Impact, travelers get the objective to Acquire the energy storage device and unlock the research terminal ahead. Luckily, it is a very simple task. There are three storage devices and three research terminals in the Geode Mine Shaft.



Can storage devices provide energy to transfer and research terminals? Storage devices can provide energy to Transfer and Research Terminals. Pick up a portable storage device and put it next to a terminal that has stopped functioning to return it to normal operation. Community content is available under CC-BY-SA unless otherwise noted.

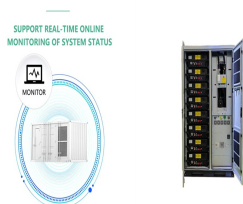
# STABILITY ENERGY STORAGE DEVICE GENSHIN IMPACT



Where can I find fixed storage devices & energy transfer devices? Fixed Storage Devices and Energy Transfer Devices are an exploration mechanic in Fontaine currently found in the Liffey Region and Fontaine Research Institute of Kinetic Energy Engineering Region. They can be found both underwater and on land. Fixed Storage Devices are stationary and Energy Transfer Devices can be moved by the player.



Storage devices can provide energy to Transfer and Research Terminals. Pick up a portable storage device and put it next to a terminal that has stopped functioning to return it to normal operation. Genshin Impact Wiki is a FANDOM Games Community. View Mobile Site



Storage devices can provide energy to Transfer and Research Terminals. Pick up a portable storage device and put it next to a terminal that has stopped functioning to return it to normal ???



3 ? We at Game8 thank you for your support. In order for us to make the best articles possible, share your corrections, opinions, and thoughts about ???Energy Concentrating Component Locations and How to Use | Genshin Impact??? with us!. When reporting a problem, please be as specific as possible in providing details such as what conditions the problem ???



We at Game8 thank you for your support. In order for us to make the best articles possible, share your corrections, opinions, and thoughts about ???A-Toymaking We Shall Go: Energy Storage World Quest Walkthrough and Rewards | Genshin Impact??? with us!. When reporting a problem, please be as specific as possible in providing details such as what ???

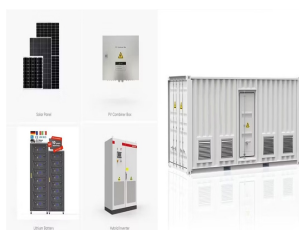
# STABILITY ENERGY STORAGE DEVICE GENSHIN IMPACT



Energy is the resource used to execute Elemental Bursts. The amount of energy required for each Elemental Burst varies and can be checked in-game via the Skill Attributes section of a character's Talents menu. After a character uses their Elemental Burst, their energy is completely drained. A character cannot have more energy than is required for their Elemental Burst, nor ???



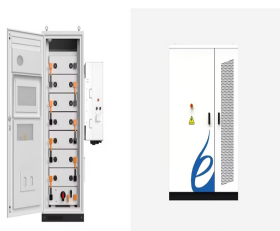
Genshin Impact is a gaming behemoth in more ways than one??? sometimes literally when you look in your gaming device's storage and see how little space you have left after an update. Now, with the impending release of the Fontaine or the Update 4.0, that storage device is about to get more stuffed.



We at Game8 thank you for your support. In order for us to make the best articles possible, share your corrections, opinions, and thoughts about ???Energy Concentrating Component Locations and How to Use | Genshin Impact??? with us!. When reporting a problem, please be as specific as possible in providing details such as what conditions the problem ???



Follow these steps: Collect three Energy Storage Devices, marked on the map. Avoid Energy Thieves that can steal your energy. Remove barriers blocking the Research Terminals. Activate the



Fixed Storage Devices are stationary and Energy Transfer Devices can be moved by the player. Devices that do not contain any energy are red and devices with energy are blue. Energy ???

# STABILITY ENERGY STORAGE DEVICE GENSHIN IMPACT



Stabilizers in Genshin impact ??? special devices in Fontaine, whose stability needs to be restored. After activating the mechanism, a ring begins to move along it, and parts of the indicator light up blue, helping to determine the moment to strike the structure. Defeat the enemy and take the portable energy storage device. Take the device



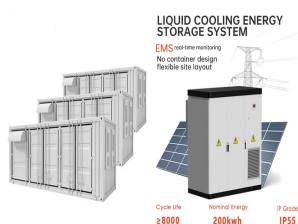
The Flying Energy Thief is a mechanism that appears in the underground mines below Fortress of Meropide in Genshin Impact 4.1. See what the mechanism is and how to use it! Avoid When Holding Energy Storage Devices. When holding a storage device with energy, the Flying Energy Thief will chase your character and attempt to stop you from



Finally, go back to the initial location and grab the third Energy Storage Device in Genshin Impact. Simply go straight and turn left at the end to find the third Deactivated Research Terminal. Upon approaching the exit, a barrier appears out of nowhere and locks everyone inside the mine. It turns out that Noailles caught up with the group and



Fixed Storage Devices are energy storage units that are commonly seen near Energy Transfer Terminals and allow energy to be transferred from storage devices to them. They can easily be classified due to how their bases are fixed to the ground.



Steady Stately Stability is a Furniture Item for Genshin Impact's Housing and Furnishing System. See how to get Steady Stately Stability, how to craft it, the crafting materials, Trust points, Adeptal Energy, and furnishing details here!

# STABILITY ENERGY STORAGE DEVICE GENSHIN IMPACT



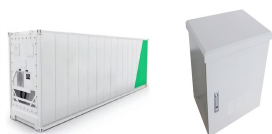
To obtain the third Energy Storage Device in Genshin Impact, return to the starting point and proceed directly ahead. At the end, make a left turn to locate the third Deactivated Research Terminal. As the group approaches the exit, an unexpected barrier suddenly materializes, trapping everyone inside the mine. It turns out that Noailles has



Galvana is an open-world NPC located in Administrative Area, Fortress of Meropide, Fontaine. Following a certain dialogue branch for the first time gives the player a Guide to Order. Galvana can be found guarding the Rift of Erosion in the Administrative Area's Dormitory Block. After completing the World Quest Scenes from Life in Meropide: Dead End in Series Scenes from ???



Obtaining the Energy Storage Device and unlocking the Research Terminal is a crucial part of the "An Eye for An Eye" quest in Genshin Impact. To progress, players must gather three Energy Storage Devices and utilize them on three distinct Terminals to eliminate barriers obstructing access to the Research Terminal.



As Genshin Impact expands the game by adding newer areas each Version update, the storage space it occupies also increases. 30GB is only the base installation size of Version 1.0 back in September 28, 2020 during its launch, but it has already gone way beyond that because of the numerous updates!



How to Rotate the Device to Complete the Image Activate the Mechanism to Rotate the Device. Interact with one of the mechanisms found in the chamber to activate it. The device on the wall will rotate continuously, and you must select stop to make it pause. The device will glow gold if you got the correct position!. There will be three mechanisms found in the ???

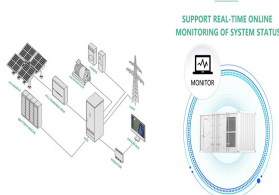
# STABILITY ENERGY STORAGE DEVICE GENSHIN IMPACT



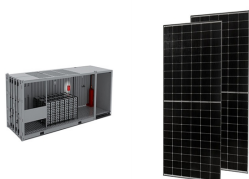
Pneumosia Storage Boxes are locked mechanisms added in Genshin Impact 4.0 that can be opened with the correct Pneumosia Energy. See what these boxes are, how to open them, and all known information about them here! Fixed Storage and Energy Transfer Device: How to Destroy the Thorny Cyst: How to Stop the Strange Eels: Knocking Vases



Stabilizers are released in the Version 4.1 update of Genshin Impact, which is on September 27, 2023! Along with it comes new areas to explore, new puzzles to solve, new enemies to defeat, and new content to experience! Version 4.1 Release Date and Patch Notes. Genshin Impact Related Guides. Fontaine Map Guide. Fontaine Area Map Guides



To repair the Energy Transfer Terminal, you must use the Terminal's Viewfinder to collect and transfer energy from either the Fixed Storage or Energy Transfer Device. Fixed Storage and Energy Transfer Device. Also Used to Decipher Cipher Letters. Cipher Letters are also present in Genshin Impact's 4.1 update. These sigils can only be deciphered



Passage's Stable Storage is a Furniture Item for Genshin Impact's Housing and Furnishing System. See how to get Passage's Stable Storage, how to craft it, the crafting materials, Trust points, Adeptal Energy, and furnishing details here!



Tourbillon Device is a Character Level Up Material from the Experimental Field Generator boss in Genshin Impact 4.1. See how to get the Tourbillon Device, its location, and which characters use it here!

# STABILITY ENERGY STORAGE DEVICE GENSHIN IMPACT

---



Stabilizers are an exploration mechanic in Fontaine currently found in the Liffey Region and Fontaine Research Institute of Kinetic Energy Engineering Region. Some stabilizers may be unusable until a Fixed Storage Device or Energy Transfer ???