

STANDARD SIZE OF 40-FOOT ENERGY STORAGE CONTAINER



What is the capacity of a 40 ft container? Here is the detailed dimension: The 40-ft container capacity depends upon two categories: standard and high cube containers. A standard container has a volume capacity of 67.7 cubic meters and a maximum payload of around 27,600 kg.



How big is a 40-foot shipping container? A typical 40-foot shipping container is about 40 feet long, 8 feet wide, and 8.6 feet tall. This size offers plenty of room for different types of cargo or storage, with a total space of about 2,350 cubic feet. Knowing these measurements helps you figure out if a 40-foot container meets your needs and plan how to move and place it.



How much weight can a 40 foot container carry? The tare weight (empty weight) of a standard 40-foot container is approximately 3,750 kg (8,268 lbs). The maximum payload (weight of the cargo) it can carry is around 26,300 kg (58,000 lbs). Therefore, the maximum gross weight (container plus cargo) is 30,480 kg (67,196 lbs).



What is a 40 ft high cube container? The 40-foot high cube container is similar to a standard 40-foot container but with an extra foot in height. The external dimensions are: This additional height makes high cube containers ideal for transporting and storing larger or bulkier items that wouldn't fit in a standard container.



What can be stored in a 40 foot container? Items that can be accommodated in a 40-foot container include: Eight standard pallets, each measuring 48 inches by 40 inches, were neatly stacked two levels high. An entire three-bedroom house's worth of furniture. Various vehicles, including cars, trucks, and motorcycles. A wide array of construction materials and equipment.

STANDARD SIZE OF 40-FOOT ENERGY STORAGE CONTAINER



How big is a shipping container? It typically measures approximately 40 feet in length, 8 feet in width, and 8.5 feet in height. Internally, there is ample space to accommodate various items. These containers are made to fit well on ships, trains, and trucks, so they can be used in different ways to ship things.



Check out our 40-foot shipping containers ??? perfect for all your storage and transportation needs! Use 40 foot storage containers for on-site storage needs. A: The main difference is the height. A standard 40 foot container has an external height of 8.5 feet (2.59 meters), while a 40 foot high cube container is 1 foot taller, with an



Overview of 40 Foot Shipping Containers. A 40 foot shipping container is a versatile and secure option for business owners and construction managers needing extra storage or workspace. Here's a quick snapshot for those in a rush: Dimensions: 40 feet long, 8 feet wide, and 8 feet 6 inches tall (Standard) or 9 feet 6 inches (High Cube).; Weight: Approximately ???



Shipping containers come in a range of standard sizes. Their size refers to the container's length in feet. Most containers are a similar width and there are two common heights, a general purpose or high cube variant. More about that later. How big is a shipping container? They range in size from 8ft, or 2.43m, all the way up to 48ft, or 14.63m.



If you have been looking for extra space for your home conversion or storage needs, look no further; the 53ft container dimensions will rock your world! The 40 foot container is 40ft (12.29m) long, 8ft (2.44m) wide, and 9ft 6 in (2.896m) high. Due to its gigantic size, the 53 ft container can hold 6 standard vehicles and between 7 and 8

STANDARD SIZE OF 40-FOOT ENERGY STORAGE CONTAINER



Size. Standard shipping containers, typically 20 or 40 feet in length, offer ample space for housing BESS components while maintaining a compact footprint. Mobility. The portability of shipping containers allows for easy relocation of BESS as needed, providing flexibility for changing energy needs. Customizability



The choice between a standard 40-foot container and a 40-foot high cube depends on the specific requirements for storage or transportation. Standard containers, which are 40 feet long, 8 feet wide, and 8 feet 6 inches tall externally, offer plenty of space and are commonly used for general cargo in shipping and storage.



5 ? Here's what you need to know quickly: External Dimensions: 40 ft. x 8 ft. x 8.5 ft. Internal Dimensions: 39.5 ft. x 7.8 ft. x 7.9 ft. High Cube Option: Extra foot in height for bulky items. 40 feet containers are crucial because they offer ???

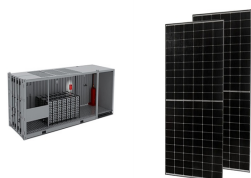


40-foot Standard Container. Exterior dimensions: 40 ft (L) x 8 ft (W) x 8.5 ft (H) Interior dimensions: 39.5 ft (L) x 7.8 ft (W) x 7.10 ft (H) Load capacity: approximately 67,200 lbs (30,480 kg) The 40-foot shipping container dimension is the most common in the shipping industry and can carry nearly double the cargo of a 20-foot container. It's perfect for transporting larger ???



Understanding the exact dimensions of a 40ft high cube container is crucial for shippers, businesses, and anyone considering container-based storage solutions. Below are the typical measurements. External Dimensions: Length: 40 feet (12.19 meters) Width: 8 feet ???

STANDARD SIZE OF 40-FOOT ENERGY STORAGE CONTAINER



What is the Capacity of a 40-foot Shipping Container? The standard 40-foot shipping container has a usable capacity of 67.70 cubic meters or 2390.80 cubic feet. This provides ample space for the efficient and secure transportation of goods across various industries and global shipping networks. How to Load a 40ft Shipping Container?



Double the size of a 20-foot container, it's perfect for larger shipments, making it a favorite among businesses dealing with bulk goods. The 40 ft container boasts a spacious 40 ft (12192 mm) length, standing at a height of 8'6" (2591 mm) and a generous width of 8 feet (2438 mm). Inside, you'll find internal dimensions of 39" in length (11887 mm), 7'8" (2377 mm) in width.



Interport offers one of the largest selections of shipping containers in the Northeast. Call Today 973.589.2329. Search. Search for: Secure Parking. New & Used Containers. By Size. 10ft. Power Generation & Energy Storage. Consumer Good & Services. Indoor & Outdoor Farming. Education. From standard dry containers to specialized



A 40-foot container, also known as a 40-foot shipping container or 40-foot high cube container, is a standard intermodal container commonly used for shipping goods. In terms of furniture capacity, the actual amount that can fit inside depends on several factors such as the size and type of furniture, how it is packed, and any additional items



Range of MWh: we offer 20, 30 and 40-foot container sizes to provide an energy capacity range of 1.0 to 2.9 MWh per container to meet all levels of energy storage demands. Optimized price performance for every usage scenario: customized design to offer both competitive up-front cost and lowest cost-of-ownership. Insulated containers: safe and secure access with active ventilation.

STANDARD SIZE OF 40-FOOT ENERGY STORAGE CONTAINER



Steel storage containers are highly durable and weather-resistant, designed for the rigors of shipping cargo. They offer excellent protection against theft and vandalism. Steel containers come in various sizes, with standard options like 20-foot and 40-foot containers. High cube containers provide additional height for extra storage space.



Understanding shipping container dimensions is a prerequisite to using them for storage or even combining them into a creative container home. The multitude of shapes and sizes of storage containers (Open-top, high-cube, 48-foot, flat-rack, etc.) leads to numerous configurations available for sale. While 40-foot standard shipping containers are what most ???



Understanding the 40-foot high cube shipping container dimensions is crucial for efficient planning and utilization. Let's break down its external measurements in both imperial and metric units. Length. Imperial: 40 feet; Metric: 12,192 millimeters; The length of the 40-foot high cube container is the same as a standard 40-foot container.

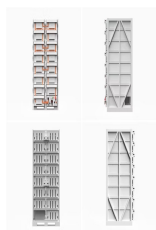


Standard shipping containers provide a predictable and reliable framework that facilitates efficient transport worldwide. Imagine trying to load a container onto a ship, then a train, and finally a truck, only to find that it doesn't quite fit on one of those vehicles. By adhering to the standard size of the ISO container, businesses



7. Container selection and structural modifications: - Select an appropriate container size (e.g., 20-foot or 40-foot) based on the system layout and required capacity. - Make necessary structural modifications to the container, such as ventilation openings, cable entry points, and door reinforcements. 8. System integration and assembly:

STANDARD SIZE OF 40-FOOT ENERGY STORAGE CONTAINER



A. Standard Dry Cargo Container: Dimensions: Standard sizes of 20 feet and 40 feet, with a width of 8 feet and height of 8.5 feet. Common Uses: Ideal for transporting electronics, clothing, and machinery. B. High Cubic Container: Dimensions: Standard sizes of 20 feet and 40 feet, with an increased height of 9.5 feet, offering more storage space.



Containers; 40" Standard; Default; Inside Dimensions; ISO Size Type 42 G1 Standards 20" Standard 40" Standard 40" Standard High Cube Inside Dimension Measure Length Width Height; Millimeters: 12,032: 2,352: 2,395: Feet: 39" 5 5/8" 7" 8 5/8" 7" 10 1/4" Door Opening Measure Width Height; Millimeters : 2,340: 2,292: Feet: 7" 8 1/8" 7" 6 1/4"



The size of the ISO container is 7.8 feet (2.3 meters) wide, 7.9 feet (2.3 meters) high, and can be either 20 feet (5.9 meters) or 40 feet (12.03 meters). These containers are commonly employed to transport dry goods, such as machinery, grains, paper, and electronics.



In the rapidly evolving landscape of renewable energy storage, TLS Offshore Containers /TLS Energy stands as a pioneering force. With an expansive factory covering approximately 300,000 square meters and employing around 1,000 skilled workers, we ???



Between 2 ??? 4 vehicles can fit in a 40 foot shipping container, depending on the size of the cars in question. How many boxes fit in a 40-foot container? A standard pallet can hold 60 boxes. Since a 40-foot container can typically accommodate 20 pallets, this means you can fit an average of 1,200 boxes in a 40-foot container.

STANDARD SIZE OF 40-FOOT ENERGY STORAGE CONTAINER



By 2032, estimates are around \$49.2 billion. It's safe to assume the demand for BESS enclosures will grow as well. Shipping containers are stepping in as the practical, available, and modifiable solution to the industry's growing demand. Size. 20 and 40-foot shipping containers are the ideal size for all of the interior components of a BESS.



Our 40 ft storage containers are from high quality shipping container manufacturers offered at low prices. Available one-trip, open-side, high cube, used & for rent 40" shipping containers. The standard 40 ft container can accommodate a freight weight of up to 44,000 lb. This limit is typically enforced by the container's owner, such as a