

STEAM COLLECTION TANK ENERGY STORAGE



What is a steam accumulation tank? Steam accumulation tanks are generally cylindrical with elliptical ends and are manufactured from boiler plate. One of the main advantages is that the storage fluid is water, avoiding uncertainty in the price of the storage medium.



How does a steam storage tank save energy? When steam is supplied, it condenses in the water contained in the storage tank, causing the water level to rise and creating excess pressure in the tank. Together with the tank insulation, this contributes to the energy conservation of the heat transfer medium.



What is steam accumulation? Authors to whom correspondence should be addressed. Steam accumulation is one of the most effective ways of thermal energy storage (TES) for the solar thermal energy (STE) industry.



What is a gravity storage tank (Ruths accumulator)? In contrast to the constant pressure storage tank, the advantage of the gravity storage tank (Ruths accumulator) is that it can supply steam directly without having to go via the steam boiler. Inside, it consists of a steam distributor with nozzles and mixing pipes.



What is an equal pressure storage tank? In principle, the equal-pressure storage tank is an extension of the steam boiler. Boiling water is channelled from the boiler into the steam accumulator to charge the accumulator. If steam is required again, the equal-pressure storage tank returns the water to the boiler at a slightly lower temperature.



Web: <https://www.twojaelektryka.com.pl>

STEAM COLLECTION TANK ENERGY STORAGE



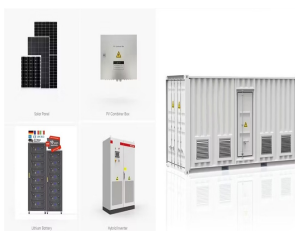
In addition, there are now new innovative energy storage solutions such as the ThermalBattery??? from ENERGYNEST, which allows steam to be stored even more efficiently. How does a steam accumulator work?



Thermal energy storage (TES) is a technology that stocks thermal energy by heating or cooling a storage medium so that the stored energy can be used at a later time for heating and cooling applications and power generation.



However, the low operating costs are offset by comparatively high costs for the pressurised tank. If the steam pressure increases, the thickness of the steel walls of the storage tank must be adjusted accordingly. This type of ???



A French chemical company operates a steam / condensate system to provide various consumers (e.g. heat exchangers, heating coils) with thermal energy. In case of boiler water carry-over or if steam condensate accumulates on the ???