

# SUGGESTIONS ON OPTIMAL CONFIGURATION OF WIND SOLAR AND ENERGY STORAGE CAPACITY



How can energy storage system capacity configuration and wind-solar storage micro-grid system operation be optimized? A double-layer optimization model of energy storage system capacity configuration and wind-solar storage micro-grid system operation is established to realize PV, wind power, and load variation configuration and regulate energy storage economic operation.



Do energy storage capacity and wind-solar storage work together? This paper considers the cooperation of energy storage capacity and the operation of wind-solar storage based on a double-layer optimization model. An Improved Gray Wolf Optimization is used to solve the multi-objective optimization of energy storage capacity and get the optimized configuration operation plan.

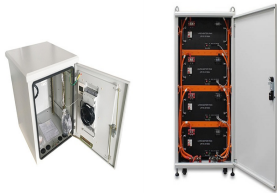


How to reduce the cost of energy storage in wind farms? Considering whole-life-cycle cost of the self-built energy storage, leasing and trading cost of the CES and penalty cost of wind abandonment and smooth power shortage, an optimal configuration model of combined energy storage capacity in wind farms based on CES service was established to minimize the total annual cost.



Should wind farms lease CES capacity and self-built physical energy storage capacity? Wind farms can lease CES to suppress wind power fluctuations, which brings new problems of energy storage capacity configuration. Therefore, it is urgent to study the joint optimal configuration of leased CES capacity and self-built physical energy storage capacity.

# SUGGESTIONS ON OPTIMAL CONFIGURATION OF WIND SOLAR AND ENERGY STORAGE CAPACITY



What is wind farm energy storage capacity optimization? The goal of wind farm energy storage capacity optimization is to meet the constraints of smooth power fluctuations and minimize the total cost, including the cost of self-built energy storage, renting CES, energy transaction service, wind abandonment penalty and smooth power shortage penalty.



How to optimize energy storage capacity? The key problem of optimal allocation of energy storage capacity is to optimize the output power and load power distribution of photovoltaic and wind power generation systems. In the GWO algorithm, the ?? wolf is guided by the ?? wolf, the ?? wolf, and the ?? wolf, and approaches the target gradually until the final capture target .



Because the new energy is intermittent and uncertain, it has an influence on the system's output power stability. A hydrogen energy storage system is added to the system to create a wind, light, and hydrogen integrated ???



1 INTRODUCTION 1.1 Motivation and background. With the increase of wind power penetration, wind power exports a large amount of low-cost clean energy to the power system []. However, its inherent volatility and ???



Wind-solar integration with energy storage is an available strategy for facilitating the grid synthesis of large-scale renewable energy sources generation. C., He, C., et al.: ???

# SUGGESTIONS ON OPTIMAL CONFIGURATION OF WIND SOLAR AND ENERGY STORAGE CAPACITY



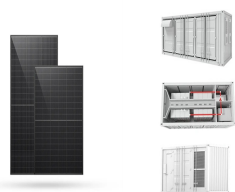
With the increase of grid-connected capacity of new energy sources such as wind power and solar power, considering the stability and security of micro-grid operation, In this ???



The optimal configuration of battery energy storage system is key to the designing of a microgrid. In this paper, a optimal configuration method of energy storage in grid-connected microgrid is proposed. Firstly, the two-layer ???



In this paper, the capacity optimization model of the complementary energy storage system is established based on the analysis of the wind-solar energy storage principle and the ???

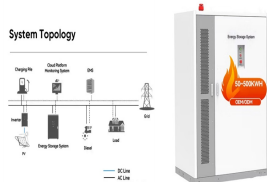


We propose a unique energy storage way that combines the wind, solar and gravity energy storage together. And we establish an optimal capacity configuration model to optimize ???



In Pareto optimal cases solar installed capacity is generally higher than wind, with the wind-solar installed capacity ratio never exceeding 0.50 for large renewable capacity. Fig. ???

# SUGGESTIONS ON OPTIMAL CONFIGURATION OF WIND SOLAR AND ENERGY STORAGE CAPACITY



In the configuration of energy storage, energy storage capacity should not be too large, too large capacity will lead to a significant increase in the investment cost. Small energy ???



In this paper, an improved energy management strategy based on real-time electricity price combined with state of charge is proposed to optimize the economic operation of wind and ???



Optimal configuration. Storage capacity. and a number of demonstration projects of wind, solar and energy storage have been planned and constructed. The existing research ???



In recent years, many scholars have carried out extensive research on user side energy storage configuration and operation strategy. In [6] and [7], the value of energy storage ???



The installed capacity of energy storage in China has increased dramatically due to the national power system reform and the integration of large scale renewable energy with other sources. To support the construction of ???

# SUGGESTIONS ON OPTIMAL CONFIGURATION OF WIND SOLAR AND ENERGY STORAGE CAPACITY



At the same time, through qualitative social utility analysis and quantitative energy storage capacity demand measurement, this strategy fully takes into consideration multiple ???



Considering whole-life-cycle cost of the self-built energy storage, leasing and trading cost of the CES and penalty cost of wind abandonment and smooth power shortage, an optimal configuration model of combined energy ???



In this paper, a large-scale clean energy base system is modeled with EBSILON and a capacity calculation method is established by minimizing the investment cost and energy storage capacity of the power system and ???