

SUMMARY OF INTERPRETATIONS OF ENERGY STORAGE CONFIGURATION POLICIES IN VARIOUS REGIONS



What is the 'guidance' for the energy storage industry? Based on the above analysis, as the first comprehensive policy document for the energy storage industry during the ???14th Five-Year Plan??? period, the ???Guidance??? provided reassurance for the development of the industry.



What are energy storage policies? These policies are mostly concentrated around battery storage system, which is considered to be the fastest growing energy storage technology due to its efficiency, flexibility and rapidly decreasing cost. ESS policies are primarily found in regions with highly developed economies, that have advanced knowledge and expertise in the sector.



Will energy storage change the development layout of new energy? The deployment of energy storage will change the development layout of new energy. This paper expounds the policy requirements for the allocation of energy storage, and proposes two economic calculation models for energy storage allocation based on the levelized cost of electricity and the on-grid electricity price in the operating area.



Should energy storage be integrated into power system models? Integrating energy storage within power system models offers the potential to enhance operational cost-effectiveness, scheduling efficiency, environmental outcomes, and the integration of renewable energy sources.



What is the 'guidance on accelerating the development of new energy storage? Since April 21, 2021, the National Development and Reform Commission and the National Energy Administration have issued the ???Guidance on Accelerating the Development of New Energy Storage (Draft for Solicitation of Comments)??? (referred to as the

SUMMARY OF INTERPRETATIONS OF ENERGY STORAGE CONFIGURATION POLICIES IN VARIOUS REGIONS



???(Guidance???), which has given rise to the energy storage industry and even the energy industry.

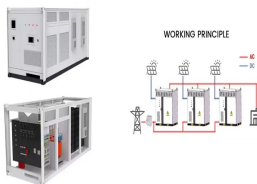
SUMMARY OF INTERPRETATIONS OF ENERGY STORAGE CONFIGURATION POLICIES IN VARIOUS REGIONS



What is the ideal arrangement of energy storage? The ideal arrangement of energy storage relies on its utilization and is constrained to a maximum discharge duration of 5 h at full power, while the power discharged is restricted to 40 % of the nominal capacity of the photovoltaic (PV) system.



This paper, on the long-term planning of energy storage configuration to support the integration of renewable energy and achieve a 100 % renewable energy target, combines ???



Energy usage is an integral part of daily life and is pivotal across different sectors, including commercial, transportation, and residential users, with the latter consuming 40% of ???



This marked the start of policy-driven market development for new energy storage in China. At Interact Analysis, we sorted through a variety of policies issued by the central government, which can be roughly divided into the following four ???



A long-term trajectory for Energy Storage Obligations (ESO) has also been notified by the Ministry of Power to ensure that sufficient storage capacity is available with obligated entities. As per the trajectory, the ESO ???

SUMMARY OF INTERPRETATIONS OF ENERGY STORAGE CONFIGURATION POLICIES IN VARIOUS REGIONS



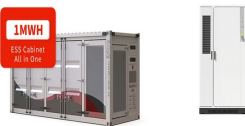
Energy Storage Technology is one of the major components of renewable energy integration and decarbonization of world energy systems. It significantly benefits addressing ancillary power services



In response to the current issues in the allocation of energy storage in various provinces, the document also further clarifies the coordinated development of energy storage and new energy, through competitive ???



According to the prediction by S& P Global Commodity Insights, the total production capacity of lithium-ion batteries worldwide is expected to experience dramatic expansion in the ???



Several previous studies have considered China's policies with respect to the PV and ES industries. In 2013, Zhang [7] summarized the current status of the application of ES ???