

SÃO TOMÁ© AND PRÃ-NCIPE GIVENERGY GATEWAY



Where can I find information about energy access in Sao Tome & Principe? Find relevant information for Sao Tome and Principe on energy access (access to electricity, access to clean cooking, renewable energy and energy efficiency) on the Tracking SDG7 homepage. (Sustainable Development Goal indicators 7.1 energy access, 7.2 on renewable energy and 7.3 on energy efficiency).



What are the energy indicators for Sao Tome and Principe? (Sustainable Development Goal indicators 7.1 energy access, 7.2 on renewable energy and 7.3 on energy efficiency). Find a summarized energy profile for Sao Tome and Principe (Atlas of Africa Energy Sources).



Which energy source is not included in Sao Tome & Principe? Traditional biomass??? the burning of charcoal, crop waste, and other organic matter ??? is not included. This can be an important energy source in lower-income settings. Sao Tome and Principe: How much of the country???s energy comes from nuclear power?



Where can I find information about Sao Tome and Principe's electrification strategy? Find an overview of the electrification investment scenarios (2025 and 2030) for Sao Tome and Principe on the Global Electrification Platform (GEP). Find relevant information on the regulations and Sao Tome and Principe's strategy in the energy sector on the homepage of the African Energy Portal.



Is biomass a source of electricity in Sao Tome & Principe? Traditional biomass ??? the burning of charcoal, crop waste, and other organic matter ??? is not included. This can be an important source in lower-income settings. Sao Tome and Principe: How much of the country???s electricity comes from nuclear power? Nuclear power ??? alongside renewables ??? is a low-carbon source of electricity.

SÃO TOMÁ AND PRÍNCIPE GIVENERGY GATEWAY



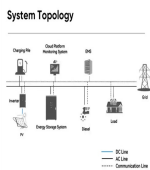
Sao Tome and Principe: Many of us want an overview of how much energy our country consumes, where it comes from, and if we're making progress on decarbonizing our energy mix. This page provides the data for your chosen country across all of the key metrics on this topic.



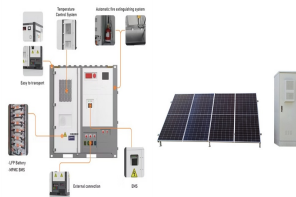
Sao Tome and Principe is a pristine ecosystem that has yet to be discovered by lovers of underwater adventures. The deep waters of the South Atlantic Ocean have true coral reefs that are home to a wide range of reef fish and different types of mammals. While snorkeling, you can cross paths with different types of turtles, dolphins, and even



The presidency of São Tomé and Príncipe in the CPLP is focused on cooperation in the energy sector, following the theme "Youth and Sustainability in the CPLP". II CPLP ENERGY Conference: Driving a Resilient, Sustainable and Inclusive ???



São Tomé e Príncipe (letteralmente in italiano "San Tommaso e Principe"), ufficialmente Repubblica Democratica di São Tomé e Príncipe (in portoghese República Democrática de São Tomé e Príncipe) è uno stato insulare indipendente dell'Africa con capitale São Tomé.. Si tratta di un arcipelago di una ventina isole situato nell'oceano Atlantico al largo dell'Africa centro ???



São Tomé ve Príncipe ya da resmî adıyla São Tomé ve Príncipe Demokratik Cumhuriyeti, Afrika kıtasının batı kıyısında Gine Kifesi açıklarında yer alan bir ada ülkesidir. São Tomé ve Príncipe adalar ada ülkesini oluşturmaktadır. Ülkenin ada ülkesi olması nedeniyle sınırlar komşusu bulunmamakta olup, Ekvator Ginesi ile Gabon'un açıklarında yer almaktadır ve

SÃO TOMÁ© AND PRÁ-NCIPE GIVENERGY SOLAR PRO. GATEWAY



Pr?ncipe 1727. S?o Tom? och Pr?ncipe uppt?cktes och annekterades av Portugal p? 1470-talet och var d? troligen obebodda. ?r 1522 inlemmades de i Portugals v?lde, och portugiserna befolkade dem huvudsakligen med f?ngar och ???



GivEnergy All In One - 13.5 kW and Gateway Complete with a substantial 13.5kWh useable battery pack that stores excess generation. Featuring a modular design with 4 removable battery packs, allowing for ease of handling and installation. (GBP ?) San Marino (GBP ?) S?o Tom? & Pr?ncipe (GBP ?) Saudi Arabia (GBP ?) Senegal (GBP



Pr?ncipe 1727. S?o Tom? och Pr?ncipe uppt?cktes och annekterades av Portugal p? 1470-talet och var d? troligen obebodda. ?r 1522 inlemmades de i Portugals v?lde, och portugiserna befolkade dem huvudsakligen med f?ngar och landsflyktiga judar. [5]1534 etablerades den f?rsta katolska kyrkan av Portugal. [6]Fr?n b?rjan var sockerr?rsplantager, som drevs med hj?lp av ???



The FUTURE OF SUSTAINABLE INVESTMENT WELCOME TO SAO TOME AND PRINCIPE Sao Tome and Principe is a flourishing group of islands consisting of two main islands and several small islets. Situated in the Gulf of Guinea within the Atlantic Ocean, it lies approximately 300 kilometers off the west coast of Africa. The official languages spoken are Portuguese, French, ???



The two islands of S?o Tom? and Principe, along with a few associated rocky islets, are located in the Gulf of Guinea on the southern coast of West Africa. The main islands are a mix of flat and mountainous areas of ???

SÃO TOMÁ© AND PRÁ-NCIPE GIVENERGY GATEWAY



Coastal Zone of Sao Tome and Principe. The country consists of an archipelago with two main islands, S?o Tom? Island which is 50 km long and 30 km wide, and Pr?ncipe Island which is about 30 km long and 6 km wide. The coastal zone includes the slopes of extinct volcanoes, within which the environment is under stress from soil degradation and



The two islands of S?o Tom? and Principe, along with a few associated rocky islets, are located in the Gulf of Guinea on the southern coast of West Africa. The main islands are a mix of flat and mountainous areas of seemingly dormant volcanoes. S?o Tom? Peak is the highest point in the group, reaching a height of 2,024 metres (6,640 ft).



So it connects back to GivEnergy's servers to talk to the gateway. They are promising a local connection over LAN at some point. That being said, I don't like the idea of it needing to go through LAN, and it seems to imply in the documentation that the gateway and the charger can talk over rs285. But the documentation is outdated and not



S?o Tom? and Pr?ncipe is not a cheap destination ??? though it's far more reasonable than other African island idylls like Mauritius or Seychelles; for a top-notch hotel, think ???300 a night rather than ???3000. On a tight budget, you might be able to get by on ???100 per person per day ??? or even a little less.



S?o Tom? og Pr?ncipe (portugisisk: S?o Tom? e Pr?ncipe), officielt den Demokratiske Republik S?o Tom? og Pr?ncipe (portugisisk: Rep?blica Democr?tica de S?o Tom? e Pr?ncipe), er en ?stat i Atlanterhavet ud for Gabon.?staten var portugisisk koloni fra 1522-1975.. ?erne er af vulkansk oprindelse og har tropisk klima med forholdsvis mange endemiske plante- og dyrearter.

SÃO TOMÁ AND PRÍNCIPE GIVENERGY GATEWAY



Rome2Rio makes travelling from São Tomé to Príncipe easy. Rome2Rio is a door-to-door travel information and booking engine, helping you get to and from any location in the world. Find all the transport options for your trip from São Tomé to Príncipe right here. Rome2Rio displays up to date schedules, route maps, journey times and



São Tomé e Príncipe (portuguese: São Tomé e Príncipe, fonetikusán: [sɐ̃wɐ̃tuˈmɐ̃ i ˈpɾɨ̃sɨpɐ̃]) Afrika nyugati partjánál, a Guineai-öbölben, az Egyenlítő mentén található. São Tomé, illetve Príncipe szigetét magában foglaló független köztársaság.. Területét tekintve Afrika második legkisebb országa (1001 km²), lakossága mintegy 160 ezer fő.



São Tomé and Príncipe, [a] officially the Democratic Republic of São Tomé and Príncipe, [b] is an island country in the Gulf of Guinea, off the western equatorial coast of Central Africa consists of two archipelagos around the two main islands of São Tomé and Príncipe, about 150 km (93.21 mi) apart and about 250 and 225 km (155 and 140 mi) off the coast.



The Giv-Gateway should be installed between the customer's supply meter and the consumer unit. The meter tails between the meter position and Givenergy Gateway should not be longer than 3 metres. If the length is more than 3 metres, you should install an additional protective device at the nearest point to the supply inside the customer's



São Tomé and Príncipe, country of Central Africa, located on the Equator in the Gulf of Guinea. It consists of two main islands, São Tomé and Príncipe, and several rocky islets. Learn more about the country in this article, which includes maps, statistics, and a survey of the country's people, economy, and government.

SÃO TOMÁ© AND PRÁ-NCIPE GIVENERGY

GATEWAY



Investors from around the world are invited to the S?o Tom? and Pr?ncipe Investment Forum, set to take place from 18-19 September 2024 at Hotel Praia, S?o Tom?. S?o Tom? and Pr?ncipe Investment Forum: A Gateway to Profitable Opportunities Takes Place 18-19 September, 2024.



While digital payment systems have seen a significant improvement in recent years Sao Tome and Principe, coverage is still very limited, and the financial infrastructure remains underdeveloped and unreliable, constraining access to payment services, particularly in rural areas and on the island of Pr?ncipe.



4. Santana Source: tripadvisor Club Santana Resort A popular spot for beach lovers and luxury seekers in search of Sao Tome's fabled cocktail of sand, sea and sun on the Atlantic, the little town of Santana spills down to the shoreline on the eastern edge of the island, emerging from the lanky palms of the jungle and the volcanic hills like some forgotten village in ???



? 1/4 ?? 1/4 ? Rep?blica Democr?tica de S?o Tom? e Pr?ncipe ? 1/4 ?,? 1/4 ? S?o Tom? e Pr?ncipe ? 1/4 ?,,,?????????? 1,001 ???



U.S. Embassy Welcomes Ambassador James Story as Charge d"Affaires to Angola and S?o Tom? and Pr?ncipe; Statement from White House Press Secretary Karine Jean-Pierre on President Biden's Travel to Germany and Angola; Study in the U.S. English Language Learning. 2022 Pan-Africa Youth Leadership Program Open for Applications; Scholarships

SÃO TOMÁ AND PRÍNCIPE GIVENERGY GATEWAY



Sao Tome and Principe. Africa. Page last updated: December 12, 2024. Photos of Sao Tome and Principe. [view 1 photos](#). [Country Flag](#). [View Details](#). [Country Map](#). [View Details](#). [Special Country Products](#). [Country Factsheet](#). [Travel Facts](#). [Africa Demographic Atlas](#). [View All Files](#). [Locator Map](#). [View Details](#)



Find relevant information for Sao Tome and Principe on energy access (access to electricity, access to clean cooking, renewable energy and energy efficiency) on the Tracking SDG7 homepage. (Sustainable Development Goal indicators 7.1 ???)