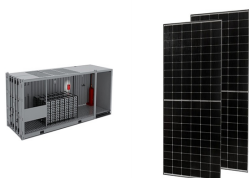


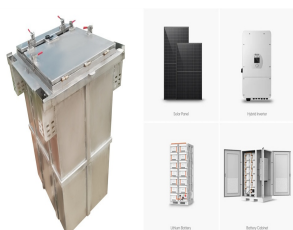
# SÃO TOMÁ AND PRÍNCIPE SMART GRID MANAGEMENT



São Tomé and Príncipe offers a truly immersive cultural experience, where you can soak in the rich traditions and heritage of this unique island nation. Whether you're exploring the local cuisine, dancing to lively music, or admiring exquisite handcrafted artwork, the culture of São Tomé and Príncipe is sure to captivate and inspire.



The integration of sensors and monitoring devices across the grid infrastructure is central to smart grid systems. These sensors continuously collect data on various parameters such as temperature, humidity, wind speed and power flow. This real-time information enables the smart grid to anticipate and respond swiftly to weather-related challenges.



The Mongolia Smart Grid Management System Project was completed using smart grid as the technology category. It is an advanced grid infrastructure, renewable integration project with a rated capacity of 30MW. It is implemented in the grid service provider. The smart grid project is owned by ZIV Grid Automation.



Here's the current STP Airways flight schedule for journeys between Lisbon and Sao Tome, as well as between the two islands.. Read more: A quick overview of São Tomé and Príncipe. The Perfect 10 Day São Tomé and Príncipe



Access Sao Tome and Principe's economy facts, statistics, project information, development research from experts and latest news. Asset Management KNOWLEDGE . World Bank Group Academy Climate-Smart Road Rehab: A crucial upgrade for São Tomé and Príncipe Climate-Smart Road Rehab: A crucial upgrade for São Tomé and Príncipe

# SÃO TOMÁ AND PRÍNCIPE SMART GRID MANAGEMENT



São Tomé and Príncipe MIDTERM REVIEW Evaluation Report MTR .  
UNDP | ENERGY PROJECT ??? Project 4602 São Tomé and Príncipe  
interconnected or in an isolated grid, through an integrated approach in  
São Tomé and Príncipe. PROJECT REFERENCE S. Tomé; the Project  
Management Unit, and all the partners and beneficiaries



Gesto was selected to assist the EU's SE4ALL TAF in the evaluation of  
São Tomé and Príncipe's energy sector and of its institutional and political  
framework, in order to support the development of the country's energy  
sector roadmap.



Box 2 ??? Typology of Off-Grid Solar Devices and Tier Calculation 7 Box  
3 ??? Typology of cookstoves in São Tomé and Príncipe 11 Box 4 ???  
Kerosene is classified as a polluting fuel by WHO 48 the valued technical  
and financial support of the Energy Sector Management Assistance  
Program (ESMAP), which is administered by the World Bank.



The Ministry of Tourism, Culture, Commerce and Industry was established  
by São Tomé's current government to implement its goal of developing  
tourism in São Tomé and Príncipe. In 2019 São Tomé and Príncipe  
received over 34,900 tourists, which represented an increase of 4.5  
percent year-on-year.



Sao Tome and Principe is a small insular country in the west coast of  
Central Africa. The small dimensions of the islands and the limited natural  
resources put these islands under highly vulnerable to climate change. To  
assess the possible future impacts and risks on their agricultural activities,  
the high-resolution 4-km downscaled climate change projections ???

# SÃO TOMÁ AND PRÍNCIPE SMART GRID MANAGEMENT



GRID-Arendal is a Norwegian foundation working closely with the United Nations Environment. We are working on projects all around the world on biodiversity, environmental crime, climate change and Indigenous Peoples. São Tomé ???



The Democratic Republic of São Tomé and Príncipe, one of the youngest and smallest countries in Africa, is made up of two main islands and several islets located in the Gulf of Guinea about 440 km to the south and 225 km to the west, respectively, of the coasts of Nigeria and Gabon, very near to the equatorial line.



Image credit: Shutterstock / BOULENGER Xavier An African democracy enjoying a high degree of political stability and freedom, São Tomé and Príncipe is an island country located in the Atlantic Ocean off the western coast of Central Africa.. The country is not a single island, but rather the two main islands of São Tomé and Príncipe as well as ???



In this context, the WB supported the development of a Least-Cost Power Development Plan, which includes a feasible and viable scenario to achieve a 50% RE penetration in the island grids of São Tomé and Príncipe by ???



Discussions on the management plan for São Tomé and Príncipe's national pelagic fisheries strategy will begin in November 2023 at the latest. According to the Minister of Agriculture, Rural Development and Fisheries, attention will need to be paid to a 25% increase in the number of boats, to more than 2,700 in just four years since the last survey in 2019.

# SÃO TOMÁ AND PRÍNCIPE SMART GRID MANAGEMENT



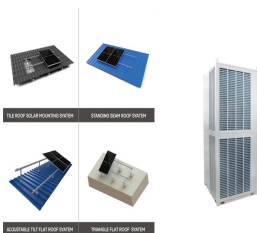
Gesto was selected to assist the EU's SE4ALL TAF in the evaluation of São Tomé and Príncipe's energy sector and of its institutional and political framework, in order to support the development of the country's energy sector roadmap.



Dhyan's Smart grid management system (SmartMan) supports online upgrades of both meter and network element software. You will no longer need to roll out a service truck to change a meter's software. SmartMan supports the automatic ???



São Tomé and Príncipe is not a cheap destination ??? though it's far more reasonable than other African island idylls like Mauritius or Seychelles; for a top-notch hotel, think ???300 a night rather than ???3000. On a tight budget, you might be able to get by on ???100 per person per day ??? or even a little less.



The main reference documents used in developing the NREAP and the NEEAP are: Vision 2030 "São Tomé and Príncipe 2030: the country we need to build", the Blue Economy Transition ???



Figure 4. Cacao beans drying. Photo by Chuck Moravec. As demand for cacao increased in the late 1800s, Portuguese investors began purchasing land from local crioulos (persons of mixed African and Portuguese/European ancestry) and soon the colony of São Tomé and Príncipe was the principal source of cacao for Great Britain's three largest chocolate ???

# SÃO TOMÁ AND PRÍNCIPE SMART GRID MANAGEMENT



The main reference documents used in developing the NREAP and the NEEAP are: Vision 2030 "São Tomé and Príncipe 2030: the country we need to build", the Blue Economy Transition ???



São Tomé and Príncipe, located at the equator in the Gulf of Guinea (0° 25' N; 6° 20' E), nearly 400 km of continental western Africa, is a volcanic archipelago of two main islands with a



São Tomé and Príncipe had a population of 0.18 million in 2013 as shown in Table 1. In 2015, total electricity produced was 3 ktoe, of which 66.6 per cent \*Build Mini-hydro Power plant connected to the main grid (4 MW). 253 Intended Nationally Determined ??? Oil Revenue Management Law (ORML) of December 2004.



Recently, the US Department of Energy awarded \$3 billion in grants for "smart grid" projects, marking a significant investment in AI-related initiatives. AI's impact is also evident in critical operations, such as the ???



National Renewable Energy Action Plan (NREAP) of São Tomé and Príncipe Period 2021-2030/2050 In the framework of the vision "São Tomé and Príncipe 2030: The country we need to build"

# SÃO TOMÁ© AND PRÁ-NCIPE SMART GRID MANAGEMENT



The sustainable industrial and socio-economic development of S?o Tom? and Pr?ncipe (STP) is heavily dependent on reforming the energy sector and transitioning from an ???



World Bank Group engagement in the country is defined under the latest Sao Tome and Principe Country Partnership Framework (CPF) ??? FY2024-2029, endorsed by the World Bank Group Board in January 2024. ???



Publication date: 2004, August Author: AfDB Description: The project for the rehabilitation, reinforcement and expansion of transport networks and electricity distribution in Sao Tome, referred to as "Electricity 1", is a facet of the Emergency Programme for the reinforcement of the electricity infrastructures (PURIE) of the Democratic Republic of Sao Tome and Principe and ???



Food and drink in S?o Tom? & Pr?ncipe. The staple item of the Santomean diet and standard restaurant fare is fish ??? grelhado ??? grilled, baked (asado) or to a lesser degree cooked/boiled (cozido).The most popular are flying fish (peixe voador), and you will see these cut open and laid out to dry on the beach or in drying sheds in large quantities.