

TAIWAN SOLAR PANEL TO BATTERY CONNECTION



Can a solar panel connect to a battery? Direct Connection Feasibility: You can connect solar panels directly to batteries for immediate energy storage, but it requires careful planning to ensure safety and efficiency. Importance of Voltage Compatibility: Always check that the voltage of your solar panel matches the battery's voltage to prevent damage and ensure optimal charging.



Can a solar panel be connected to a lithium ion battery? Lead-acid batteries are often used for cost-effective solutions, while lithium-ion batteries offer greater energy density and efficiency. Connecting solar panels directly to batteries can be done, but it requires careful consideration. Voltage Compatibility: Ensure the voltage of the solar panel matches the battery's voltage.



How to connect solar panels to charge controller? Using the wire cutters, cut enough wire to connect your solar panels to the charge controller. Also, cut a wire to connect the charge controller to the battery. First, connect the battery to the charge controller before the solar panels. This is crucial as connecting in the wrong order can damage your equipment.



How do you wire a solar panel to a battery? Use appropriate gauge wire for your system's voltage and current to minimize energy loss. Understanding these components helps you wire your solar panel system effectively and ensures optimal performance. Wiring your solar panel to a battery involves specific tools and safety precautions.



What type of battery do solar panels use? The most common types of batteries used with solar panels are lead-acid and lithium-ion batteries. Each type has its own advantages, such as cost, lifespan, and efficiency, making it essential to choose one that fits your specific energy needs. How do I ensure voltage compatibility between my solar panel and battery?

TAIWAN SOLAR PANEL TO BATTERY CONNECTION



Why do solar panels need a charge controller? A charge controller is necessary to regulate voltage and current from the solar panel to the battery, preventing overcharging and prolonging battery life. It helps maintain a safe and effective charging process. What are the risks of connecting solar panels directly to batteries?



Wiring your solar panels in series allows for the use of smaller gauge wires. This is because the current is relatively low, and the higher system voltage can tolerate a higher voltage drop compared to a lower system voltage. For example, if you have two 12V solar panels charging a 12V battery with a PWM, these solar panels would have to be



12V Solar Panel to Battery Wiring Diagram (in Parallel) 12V is the most common solar panel wiring connection with batteries, as most appliances are designed to operate on 12V. With a 12V system, parallel orientation is ???



Introduction: Basics of Solar Panel and Battery Connection. To connect a solar panel to a battery, you'll first need a solar charge controller which regulates the voltage and current coming from your solar panels. Then, ???



Step 3: Connect solar panels to charge controller. The final step is connecting the solar panels to the charge controller. If you have more than one panel and are unsure if you need to connect it in series or parallel, check out my article here, or if you have two solar panels and one battery, check out the wiring diagrams here.

TAIWAN SOLAR PANEL TO BATTERY CONNECTION



Sir, I have a solar system installed with inverter 1000W, solar panels 600w, 12w solar inverter hybrid 12v, battery one 12v 150ah, please advise /help may I add in parallel one more battery 12v 150 ah, to increase back up, NO harm to inverter and home appliances of 220 v, like mixer, fan, led bulbs, etc. please advise help thanks and regards.



Role of Solar Battery. Likewise, the solar battery plays a pivotal role in your grid-tied solar system. It stores excess power generated by the solar panels, proving invaluable during power outages, or when the solar panels aren't generating power. Solar Panel Connection Cables. Last but not least, your connection cables have a big



solar panel products from 275 manufacturers and exporters. Get product details, latest price or franchising opportunity on Taiwantrade. BNC & TNC Connector (1) All Categories. Certificate . CE (92) UL (17) FCC (13) EN (9) ISO 9001:2015 (6) Make bookings to meet with suppliers in Taiwan. Click here to find out how. Subscribe



Plan Your Configuration: Decide between series or parallel connections based on your needs. Series increases voltage; parallel increases capacity. Disconnect the Power Source: Ensure your solar panels and any connected devices are disconnected before starting.; Connect Batteries in Series:; Connect the positive terminal of the first battery to the negative ???



Discover the process of connecting solar panels to a battery bank and harness the power of clean, reliable solar energy. (USD \$) Taiwan (USD \$) Begin by connecting the positive and negative terminals of the charge controller to the corresponding terminals of the solar panels. Use appropriate wiring techniques and secure connections to

TAIWAN SOLAR PANEL TO BATTERY CONNECTION



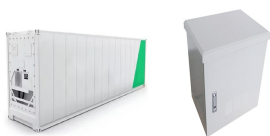
4 ? Ensure the solar panel's voltage output matches the battery's voltage rating. For example, a 12-volt battery pairs well with a solar panel rated around 18 volts. This compatibility allows the battery to charge efficiently. Use solar panels designed for the specific battery type, ???



Step 3: Wiring Your Solar Panels in Series or Parallel. After selecting an inverter, you need to wire your solar panels in series or parallel. Wiring in series increases the voltage, while wiring in parallel increases the current. Make sure to choose a charge controller that is compatible with your solar panels and battery. Determining Your



Now, you want to position your 12-volt battery near your solar panels and wiring system to optimize the energy output. The solar charge controller will receive voltage from the panels and then transfer it to the battery through wiring. This process ensures efficient energy transfer. 3. Connect the Battery to The Charge Controller



Connection Steps: Carefully follow step-by-step instructions to connect your solar panel to the battery accurately, paying close attention to the wiring and terminals. Troubleshooting Tips: Be prepared to troubleshoot common issues like low voltage output or battery charging problems by regularly checking system components and maintaining

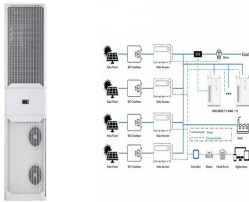


MC4 Connectors: These connectors are designed specifically for solar panels and allow for secure and weatherproof connections. Solar Cable: Use solar-rated cables with appropriate gauge size to minimize power loss and ensure safe wiring. Wire Cutters and Strippers: These tools will help you cut and strip the wires to the required length for connection.

TAIWAN SOLAR PANEL TO BATTERY CONNECTION



Is it Ok to Connect Solar Panel Directly to Battery? While it is possible to connect solar panel directly to a battery, it is generally not recommended. This can result in damage to both the battery and the solar ???



Grab the wire and connect the positive terminals of the solar panel and charge controller with each other. Do the same for the negative terminals of both the solar panels and charge controllers. Step 3: Link the charge controller to the battery . The charge controller can flow the solar panel energy into the batteries.



There are many service provider provide the solar accessories. Like other providers Shagni Electronics also provide best quality of solar energy panel, batter, controller and all other accessories. Best Quality and Best Price of Solar Panel, Battery, Inverter, Controller, Light and Fan Solar Panel Packages best Price



Connecting Solar Panel to Battery and Inverter. Connecting your solar panel system to a battery and inverter is crucial in harnessing solar energy efficiently. This section will break down the process into detailed steps to ensure a successful connection. Step 1: Mounting the Solar Panels



(Source: Electrical Technology) By combining parallel and series connections in a hybrid wiring configuration, you can address issues like shade and high voltage to maximize your electricity output and performance.. Hybrid connections are often the optimal choice for larger solar panel arrays. Typically, you'll work with a professional installer who will assess ???

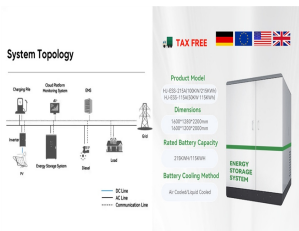
TAIWAN SOLAR PANEL TO BATTERY CONNECTION



The final word on connecting solar panels to a battery. Connecting solar panels to a battery requires technical skills and caution. Given both your panels and a solar battery cost thousands of dollars, you'll want to make sure everything is done properly to avoid any costly errors. There's also the safety angle we've discussed.



Connecting solar panels to the battery involves selecting the right charge controller, wiring the solar panels correctly, and ensuring safe and compliant connections to the battery. By following best practices and understanding the key aspects of this process, individuals and installers can establish a robust and efficient solar power system



Is it Ok to Connect Solar Panel Directly to Battery? While it is possible to connect solar panel directly to a battery, it is generally not recommended. This can result in damage to both the battery and the solar panel. Therefore, it is essential to always have a controller or regulator placed between the battery and the solar panel.



Setup Process. Determine Voltage Requirements: Ensure that the voltage of the solar panel matches the battery voltage. For instance, a 12-volt solar panel works best with a 12-volt battery. Connect the Solar Panel to the Charge Controller: Use appropriate wiring to connect the solar panel's positive and negative terminals to the input terminals of the charge ???



- o CMPower semi-flexible and rigid solar panels come with 3 foot pigtails with MC4 connectors pre-installed.
- o CMPower semi-rigid solar panels come with 6 foot pigtail only.
- o CMPower solar panels have built in diodes in the junction box to optimize performance especially with shading.
- o CMPower solar panels have junction boxes filled with inert

TAIWAN SOLAR PANEL TO BATTERY CONNECTION



SAE Battery Connector - iGreely 10 Gauge Wire SAE to O Ring Terminal, 2-Pin Quick Disconnect SAE Battery Cable Extension Wire for Solar Panel Automotive Marine Motorcycle Cars RV 10 AWG 2ft/60cm. 4.7 out of 5 stars. 556. 50+ bought in past month. Cyber Monday Deal. ELECTOP 10AWG Solar Panel Connector Cable, Compatible with Solar Connector



Wiring and connectors: Use appropriate gauge wiring and connectors to interconnect the solar panels, charge controller, battery, and inverter. 6. Mounting hardware: Depending on your installation setup, you may need mounting hardware to secure the solar panels in place.



How to Connect a Charge Controller to a Battery and Solar Panel. Instead of connecting a battery directly to a solar panel, you should install a charge controller between the battery and solar panel. The solar panel will charge battery with current but the controller ensures only a safe amount goes into it. The following steps show how it is done.



connecting two solar panels to a battery diagram. Connecting two solar panels to one battery with one charge controller is easy. This article will explain how you do it, including schematics. First of all, you should know this: You cannot connect your solar panels directly to a battery. When you connect your solar panels directly to your



Role of Solar Battery. Likewise, the solar battery plays a pivotal role in your grid-tied solar system. It stores excess power generated by the solar panels, proving invaluable during power outages, or when the solar panels ???

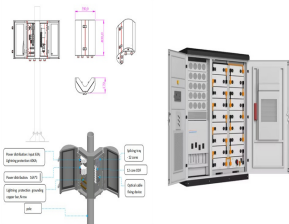
TAIWAN SOLAR PANEL TO BATTERY CONNECTION



Wear Protective Gear: Always use safety glasses and insulated gloves when connecting components. This protects against electric shock and debris. **Work in a Dry Environment:** Avoid working in wet conditions to reduce the risk of electric shock. Ensure your workspace is dry and well-lit. **Disconnect Power Sources:** Always disconnect solar panels and ???



There are a few things you'll need in order to connect a solar panel to a 12-volt battery: Solar panel; 12-volt battery; A solar panel charge controller; Battery charger; Wiring (to connect the solar panel to the charge controller and the charge controller to the battery) Once you have all of your materials, follow these steps:



Making a solar panel connection to a battery might seem like rocket science, but I'm here to walk you through it, one step at a time. In this guide, I'll share my knowledge and make sure that by the end of it, you'll feel confident enough to tackle the setup yourself. Whether you're looking to go green or save some green, connecting



Can I Connect a Solar Panel Directly to Battery? Yes, you may connect a solar panel directly to a battery. Solar panels are frequently connected in this manner, and it is a very efficient way to charge batteries. There are ???