

# THE JOB CONTENT OF THE DUTY OFFICER OF THE ENERGY STORAGE POWER STATION



What is pumped storage power station (PSPS)? The pumped storage power station (PSPS) is a special power source that has flexible operation modes and multiple functions. With the rapid economic development in China, the energy demand and the peak-valley load difference of the power grid are continuing to increase.



What are battery storage power stations? Battery storage power stations are usually composed of batteries, power conversion systems (inverters), control systems and monitoring equipment. There are a variety of battery types used, including lithium-ion, lead-acid, flow cell batteries, and others, depending on factors such as energy density, cycle life, and cost.



What is Ningxia power's energy storage station? On March 31, the second phase of the 100 MW/200 MWh energy storage station, a supporting project of the Ningxia Power's East Ningxia Composite Photovoltaic Base Project under CHN Energy, was successfully connected to the grid. This marks the completion and operation of the largest grid-forming energy storage station in China.



Why do battery storage power stations need a data collection system? Battery storage power stations require complete functions to ensure efficient operation and management. First, they need strong data collection capabilities to collect important information such as voltage, current, temperature, SOC, etc.



Is a PSPS a good energy storage system? Compared with them, the PSPS investment is lower, the service life is longer, and the efficiency of energy conversion is more stable. As a result, the PSPS is currently the most mature and practical way for large-scale energy storage in the power system. The PSPS is the optimal tool for load regulation.

# THE JOB CONTENT OF THE DUTY OFFICER OF THE ENERGY STORAGE POWER STATION



Why is system control important for battery storage power stations?  
Secondly, effective system control is crucial for battery storage power stations. This involves receiving and executing instructions to start/stop operations and power delivery. A clear communication protocol is crucial to prevent misoperation and for the system to accurately understand and execute commands.



Energy Storage Engineer will work on improving energy efficiency and developing new energy storage systems, including batteries and thermal storage. They will also be involved in analyzing system performance, ???



With the development of the new situation of traditional energy and environmental protection, the power system is undergoing an unprecedented transformation[1]. A large number of ???

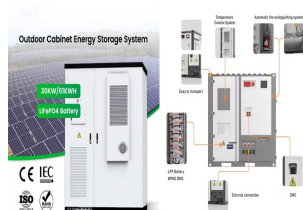


With the continuous development of energy storage technologies and the decrease in costs, in recent years, energy storage systems have seen an increasing application on a ???



In order to promote the deployment of large-scale energy storage power stations in the power grid, the paper analyzes the economics of energy storage power stations from three aspects of ???

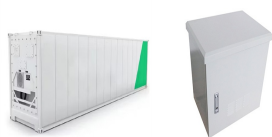
# THE JOB CONTENT OF THE DUTY OFFICER OF THE ENERGY STORAGE POWER STATION



On January 15, 2020, the Fujian Jinjiang Energy Storage Power Station Pilot Project Phase I (30 MW/108 MWh), the largest indoor stationary energy storage system in China constructed by CATL together with other ???



Current power systems are still highly reliant on dispatchable fossil fuels to meet variable electrical demand. As fossil fuel generation is progressively replaced with intermittent ???



A battery storage power station, also known as an energy storage power station, is a facility that stores electrical energy in batteries for later use. It plays a vital role in the modern ???



With the development of large-scale energy storage technology, electrochemical energy storage technology has been widely used as one of the main methods, among which electrochemical ???



Shared energy storage has been shown in numerous studies to provide better economic benefits. From the economic and operational standpoint, Walker et al. [5] compared ???

# THE JOB CONTENT OF THE DUTY OFFICER OF THE ENERGY STORAGE POWER STATION

---



Based on the installed capacity of the energy storage power station, the optimization design of the series-parallel configuration of each energy storage unit in the power station has become a top ???



Using the state of New York as an example, The American Jobs Project, in partnership with the New York Battery and Energy Storage Technology Consortium, has identified a strategy to ensure states